

BISOU ARMCHAIR

SKU: MAMOBO-402-Bisou Lounge Chair



TECHNICAL CHARACTERISTICS

Frame: constructed in solid wood with 90 mm elastic webbing

Fixed cover

Structure foam: 100% PU HR 40 kg

Seat foam: 100% PU HR 35 kg

Fire retardent foam is available upon request

Feet: beech wood

Firmness: soft O O • 0 0 firm

Handmade in Portugal

AS PICTURED

palm beach and beech 056-3 solid wood base

CLIENT'S OWN MATERIAL CONSUMPTION

all: 2,5 m

PRODUCT OPTIONS

Upholstery: available in several fabrics and leather

Base: available in beech 056-0, beech 056-1, beech 056-2, beech 056-5, natural oak, oak smoke and oak antracite solid woods, or white, ivory or black lacquered woods

PACKAGING

Weight item: 101 lb / 46 kg

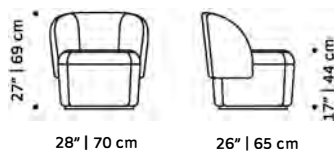
Weight with packaging: 127 lb / 58 kg

Packaging type: cardboard box and pallet

Packaging dimensions with pallet: 75x75x90 cm

Number of parcels: 1

BISOU armchair



ASTON VINYL Indoor/Outdoor



Aston 813 Linen



Aston 507 Rich Ivory



Aston 805 Cream



Aston 300 Gold



Aston 905 Dove



Aston 952 Platinum



Aston 238 Citrus



Aston 823 Chablis



Aston 837 Stone



Aston 314 Mustard



Aston 801 Tan



Aston 815 Buff



Aston 817 Chestnut



Aston 703 Mink



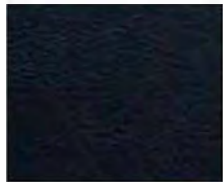
Aston 814 Espresso



Aston 807 Mushroom



Aston 203 Emerald



Aston 116 Navy



Aston 105 Indigo



Aston 953 Gunmetal



Aston 904 Pewter



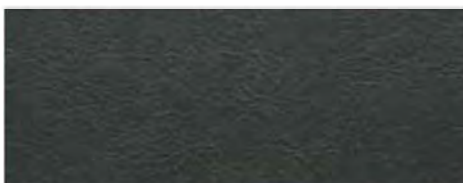
Aston 919 Zinc



Aston 954 Graphite



Aston 900 Black



Aston 906 Ash

ASTON VINYL Indoor/Outdoor



Aston 220 Light Green



Aston 204 Moss



Aston 233 Pistachio



Aston 226 Lime



Aston 228 Bottle Green



Aston 506 Mist



Aston 253 Cardamom



Aston 205 Sage Green



Aston 110 Pacific



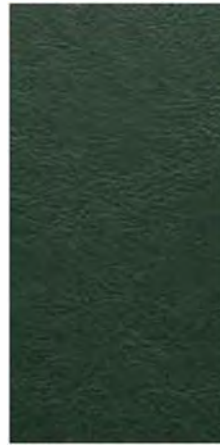
Aston 219 Seafoam



Aston 100 Blue



Aston 134 Sky



Aston 215 Elm



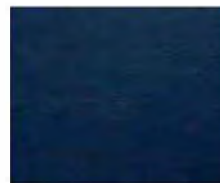
Aston 251 Eau de Nil



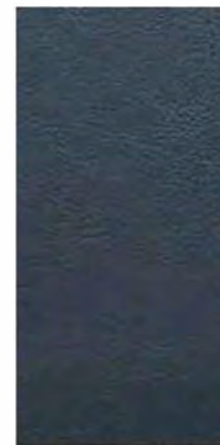
Aston 131 Azure



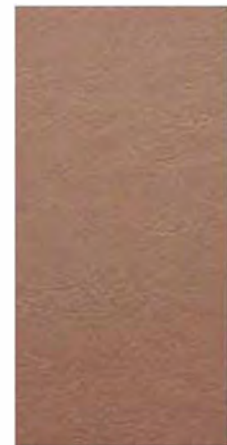
Aston 151 Teal



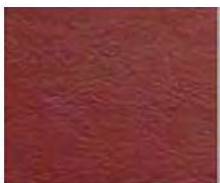
Aston 192 Ink



Aston 108 Delph



Aston 613 Pale Pink



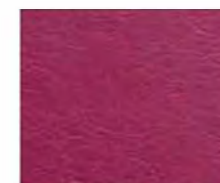
Aston 414 Wine



Aston 412 Purple



Aston 213 Aubergine



Aston 409 Magenta



Aston 414 Wine

ASTON VINYL Indoor/Outdoor



Aston 414 Wine



Aston 412 Purple



Aston 213 Aubergine



Aston 409 Magenta



Aston 414 Wine



Aston 618 Blush



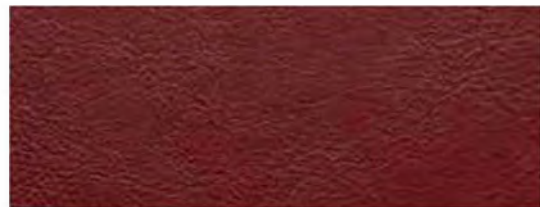
Aston 400 Red



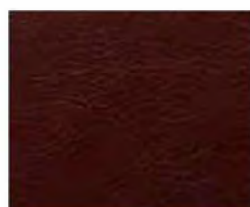
Aston 700 Brown



Aston 401 Amber



Aston 444 Cherry



Aston 407 Burgundy



Aston 408 Terracotta



Aston 877 Oyster



Upholstery



Flame Retardant



Abrasion



Waterproof



Outdoor & Indoor



Anti-Microbial



Stain Resistant



Phthalate Free

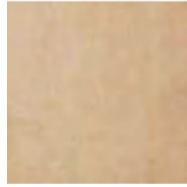


Heavy Metals Free

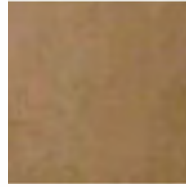
PROJECT VELVET WATER REPELLENT/PROJECT FR



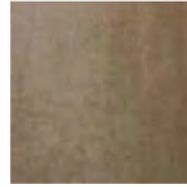
01 Ivory



02 Sand



03 Beige



04 Taupe



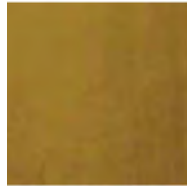
05 Chocolate



06 Curry



07 Pure Yellow



08 Golden Olive



09 Dark Green



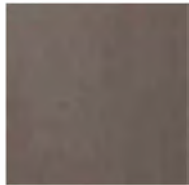
10 Storm Blue



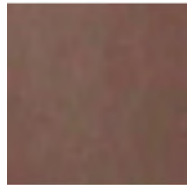
11 Aqua Marine



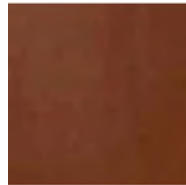
12 Capri Blue



13 Light Gray



14 Lavender



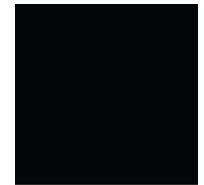
15 Ash Rose



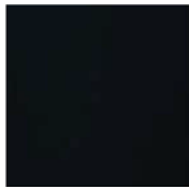
16 Deep Bordeaux



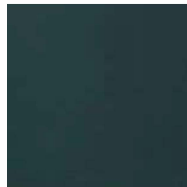
17 Rubi



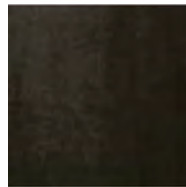
18 Black



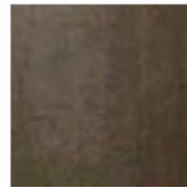
19 Navy Blue



20 Horizon Blue



21 Steel Gray



22 Dark Taupe



23 Ash Gray

Composition: 100%PL

Width: 140 (+/- 2cm)

Weight: 420 gr/ml

Lightfastness: 4

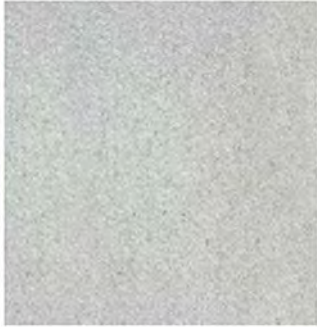
Pilling: 4/5

Martindale: 100,000 CC

Shrinkage: +/-2%

Obs.: FR treatment available upon request

FRISSET BOUCLE



01 WILD WHITE



02 GREIGE



03 TAUPE



04 MOSS GREEN



05 MIDNIGHT BLUE



06 GRAY

ZENITH NATURAL LEATHER



9000 Blanco



9001 Latte



9047 Cammello



9019 Acqua



9030 Cioccolato



9008 Topo



9023 Grafite



9009 Grigio



9024 Nero



9032 Ardesia



9021 Oceana



9018 Verdone

ZENITH NATURAL LEATHER



9022 Acclalo



9033 Cenere



9039 Champagne



9010 Avana



9012 Nocclola



9043 Nude



9037 Arancio



9038 Ananas



9042 Petunia



9016 Rosso

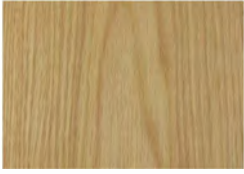


9041 Cipria



9026 Granata

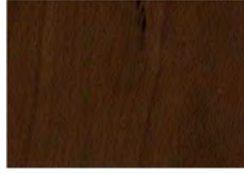
SOLID WOOD



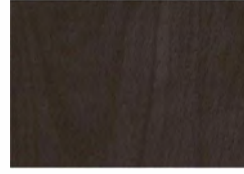
Natural Oak



Beech 056-0



Beech 056-1



Beech 056-2



Beech 056-3



Beech 056-5