

BEDROCK PLANK BENCH

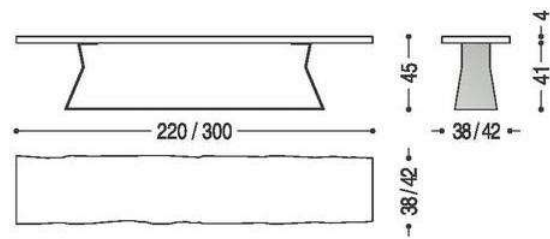
SKU:RIMO20-402-BEDROCK PLANK BENCH

Bench with seat made from hardwood. Composed of a single plank with natural edges, combined with an iron laminate base characterised by its geometrical shape. Finish: base of oil / natural wax of vegetable origin with pine extracts.



Bench Sizes:

- 86.5"W x 15"/16.5"D x 17.75"H
- 94.5"W x 15"/16.5"D x 17.75"H
- 102.5"W x 15"/16.5"D x 17.75"H
- 110.25"W x 15"/16.5"D x 17.75"H
- 118"W x 15"/16.5"D x 17.75"H



Diagrams above are shown in centimeters:

- 220W x 38/42D x 45H
- 240W x 38/42D x 45H
- 260W x 38/42D x 45H
- 280W x 38/42D x 45H
- 300W x 38/42D x 45H



Finish: base of oil / natural wax of vegetable origin with pine extracts.

WOOD AND FINISHES



VULCANO OAK



WHITENED OAK WITH KNOTS WAX



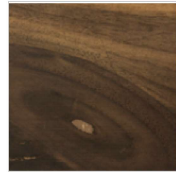
ASH GREY PIGMENTED OAK WITH KNOTS



WHITE MILK PIGMENTED OAK WITH KNOTS



OAK WITH KNOTS



WALNUT WITH KNOTS



CEDAR VULCANO

METAL AND FINISHES



TITANIUM, MATT BRUSHED EFFECT



AGED COPPER, MATT BRUSHED EFFECT



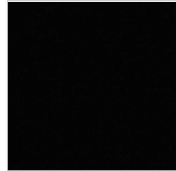
AGED BRONZE, MATT BRUSHED EFFECT



STAINLESS STEEL, MATT BRUSHED EFFECT



RAL 3020 TRAFFIC RED



RAL 9005 JET BLACK



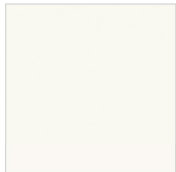
RAL 8019 GREY BROWN



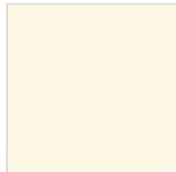
RAL 7037 DUSTY GREY



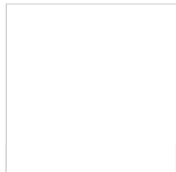
RAL 7035 LIGHT GREY



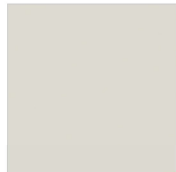
RAL 9016 TRAFFIC WHITE



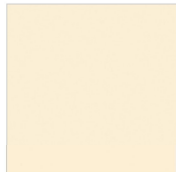
RAL 9010 PURE WHITE



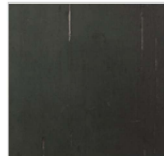
RAL 1013 OYSTER WHITE



RAL 9002 GREY WHITE



RAL 9001 CREAM WHITE



NATURAL IRON, OILED (STANDARD VERSION)