

MONDO

Apelle M CU Stool

SKU: MIMODJ-403-S1000J0

Product type: Indoor stool

Barstool - 20.1" W x 20.1" D x 39.8" H - 29.5" SH
Counter Stool-20.1" W x 20.1" D x 35.8" H - 25.6" SH

Apelle is crafted from steel and leather of very high resistance and quality: high-end materials guarantee the necessary flexibility while meeting high production requirements.

MATERIALS: The upholstery is available in COM , Fabrics or leather.
FINISHES: Sled base in lacquered steel



Colors and Materials

Structure



White steel



Black steel



Sand steel



Brown steel



Grafite metal



Industrial steel



Fango steel



Bronze metal



Pastel yellow steel



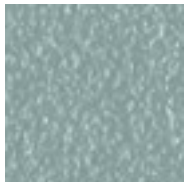
Ocher steel



Red steel



Sage green metal



Light blue metal



Ocean blue steel



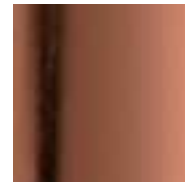
Light grey steel



Facepowder pink metal



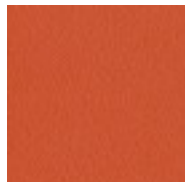
Chrome



Pink Gold



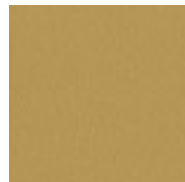
Black Nickel



Papaya orange steel



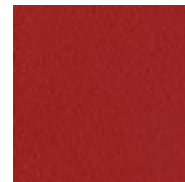
Ash grey metal



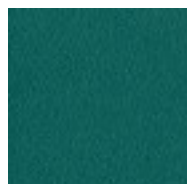
Golden yellow metal



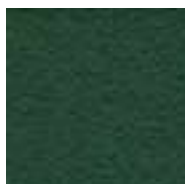
Bulgaro red metal



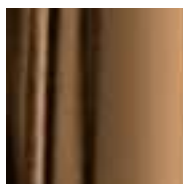
Cherry red metal



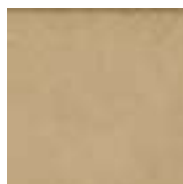
Pine green steel



Dark green metal



Golden bronze



Matt golden bronze



Matt black nickel



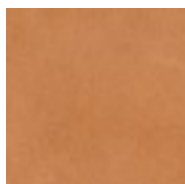
Golden champagne

Coating



Hide

18 Colors



Tuscan hide

6 Colors