



ALHAMBRA C WCER 001 DINING TABLE

SKU:ALMO2-601-ALHAMBRA C WCER 001 DINING TABLE

118.1" W x 47.2" D x 29.5" H
110.2" W x 47.2" D x 29.5" H
102.4" W x 43.3" D x 29.5" H
94.5" W x 43.3" D x 29.5" H
86.6" W x 43.3" D x 29.5" H
78.7" W x 39.4" D x 29.5" H
70.8" W x 39.4" D x 29.5" H

The alhambra a 001 dining table has a rectangular top with curved corners and a shaped edge. The legs can be in two sections or one piece. The material on the top can vary. This product is offered in other finishes. Contact us for dimensions and finishes customizations

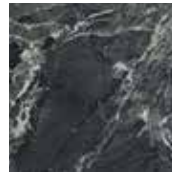
MATERIALS: Top in veneer oak and ceramic - Base solid oak.

Top in veneer walnut and ceramic - Base in solid walnut.

Top in lacquer and ceramic - base lacquered.



ceramic maxfine



aosa green marble



arabescato



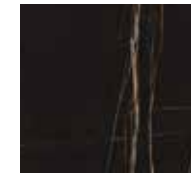
calacatta oro



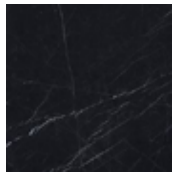
onice alabastrino



onice avorio



sahara noir



black marquina



calacatta



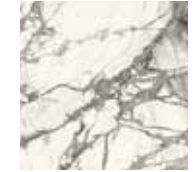
white calacatta



gem pearl



stone grey



calacatta grey

epoxy powder

only for metal parts



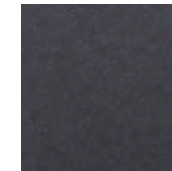
71946
brown katmai



88674
light broze



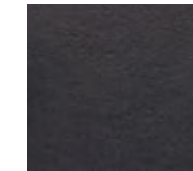
77566
met rame



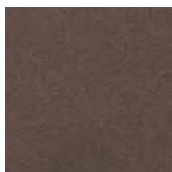
74546
nero akita



47290
bronzo arnavi



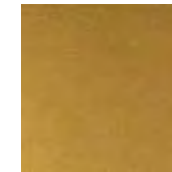
35825
ragg brown



88634
dark bronze



36136
rust rame



41113
gold karkar



65656
ancient brass



76606
grigio langila

woods



oak 11
natural oak



oak 12
light oak



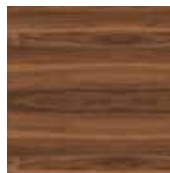
oak 13
black oak



oak 14
light chocolate oak



oak 15
dark olive grey oak



american walnut



walnut canaletto



veneer
smoked eucalyptus