

Aisea Chair

SKU: ALMOEC-401-Aisea

Product type: Indoor/Outdoor Chair

22.5" W x 21" D x 32" H - 19.75" SH

It is an armchair with generous measurements and made of the highest quality materials, perfect for contract. In the back you will find the most particular detail of this design, the rods that come from the seat curve embracing the back in a very elegant and special gesture.

MATERIALS: The upholstery is available leather, fabric. or COM
FINISHES: Metal structure



TAPIZADO / UPHOLSTERY / REMBOURRAGE



ISTOL
NEGRO



VULCANO
BLANCO



VULCANO
BEIGE



VULCANO
TAUPE



VULCANO
GRIS



VULCANO
CHOCO



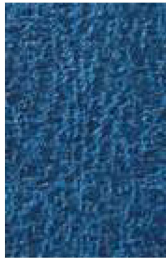
VULCANO
NEGRO



VULCANO
ANTRACITA



VULCANO
ROJO



AGNELLI
KLEIN



AGNELLI
BLANCO



AGNELLI
PIEDRA



AGNELLI
CUERO



AGNELLI
PLOMO



VACARELLO
MOSTAZA



VACARELLO
OCRE



VACARELLO
BÚFALO



VACARELLO
TURQUESA

Contact us for COM/COL requirements and instructions.

ACERO Y ALUMINIO / ALUMINIUM & STEEL / ALUMINIUM ET ACIER

PINTURA / PAINT / PEINT



1PL
RAL9010

3PL
RAL3000

4PL
RAL6019

5PL
RAL1019

7PL
RAL9005

8PL
RAL7024

9PL
RAL9006

10PL
RAL9006

13PL
RAL6003



15PL
RAL1015

17PL
RAL8012

18PL
RAL8014

MARTELÉ / HAMMERED / MARTELÉE

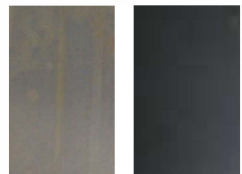


1MT
BLACK

2MT
COPPER

ACERO / STEEL / ACIER

BARNIZ INDUSTRIAL / INDUSTRIAL VARNISHED / BRUT VERNI



1BB

1BB0

Please be aware that the actual colors might vary from what you see on your screen, as monitor settings can differ.