

# AIDA STOOL COLLECTION

## AIDA SGC WOOD

SKU:ACMOTO-403-AIDA SGC WOOD



87	82	48	53
<b>h</b>	<b>h</b>	<b>h</b>	<b>A</b>
34¼"	32¼"	19"	20¾"





net weight Kg 11



m<sup>3</sup> 0,31



1 x crt

 ml h 140	fabric requirements consumi stoffe métrage tissu Stoffbedarf cantitat tela	1,00
 m <sup>2</sup>	leather pelle cuir Leder piel	1,87

## AIDA SGC METAL

SKU:ACMOTO-403-AIDA SGC METAL



91	85	60	48	53
<b>h</b>	<b>h</b>	<b>h</b>	<b>h</b>	<b>A</b>
35¾"	33½"	19"	20¾"	
26"	23½"			



net weight Kg 20





m<sup>3</sup> 0,31



1 x crt

SWIVELLING WITH GAS LIFT

 ml h 140	fabric requirements consumi stoffe métrage tissu Stoffbedarf cantitat tela	1,00
 m <sup>2</sup>	leather pelle cuir Leder piel	1,87

## AIDA SGC RAZZE

SKU:ACMOTO-403-AIDA SGC RAZZE



93	87	62	48	53
<b>h</b>	<b>h</b>	<b>h</b>	<b>h</b>	<b>A</b>
36¾"	34¼"	19"	20¾"	
26¾"	24½"			



net weight Kg 14





m<sup>3</sup> 0,31



1 x crt

SWIVELLING WITH GAS LIFT

fabric / leather requirements based on orders of min 4no. pieces

 ml h 140	fabric requirements consumi stoffe métrage tissu Stoffbedarf cantitat tela	1,00
 m <sup>2</sup>	leather pelle cuir Leder piel	1,87

# WOOD FINISHES

## STANDARD WOOD BEECH



## Amsterdam FR

DIN EN 1021-2

BS 5852 Source 1

BS 5852 Source 5 / Crib 5

UNI 9175 2010 CLASSE 1.IM

Composition 100% Polyester

Width 140 cm +/-2%

Weight 550 gr/m2 +/-5%

Category Contract, Upholstery

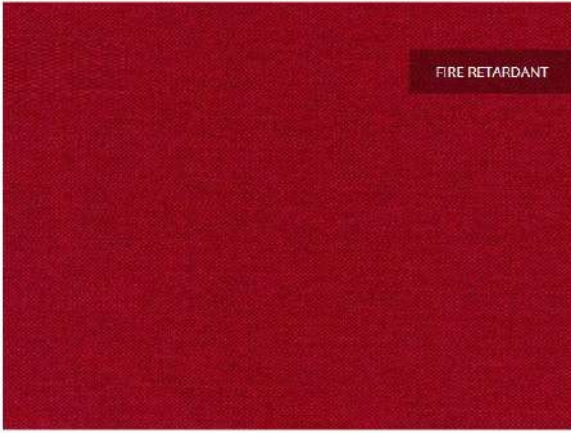
Usage  

Treatment 

Care     










## Bombay FR

EN 1021-2

BS 5852 Source 1

BS 5852 Source 5 / Crib 5

UNI 9175 2010 CLASSE 1.IM

Composition	Surface/Back: 100% Polyester/100% Polyester
Width	140 cm +/-2%
Weight	410 gr/m2 +/-5%
Category	Contract, Plain, Upholstery
Usage	
Treatment	
Care	
Part of Collection	Comb, Fashion





customs code  
59039099.

features  
88% pvc, 6% polyester, 6% cotton.

width  
cm  $\pm$  140.

weight  
 $\pm$  650 gr/m<sup>2</sup>.

thickness  
 $\pm$  0,95 mm.

roll length  
approx. 30 lm, can also be cut-to-length at an extra cost.

abrasion resistance  
> 100.000 rubs, ISO 5470-2.

color fastness to light  
7, ISO 105 B02.

fastness to rubbing  
dry 4, wet 4, ISO 105 X12.

tensile strength  
warp > 300 N/5 cm, weft > 200 N/5 cm, ISO 1421.

sustainability  
phtalete free.

fire resistance  
1IM - UNI 9175;  
EN 1021 part 1/2;  
BS 5852 part 1, is 0 and 1;  
NF D-60 013 (AM. 18);  
NFPA 260 Class 1;  
California TB 117:2013;  
IMO MED - Ftp 307 part 8;  
ÖNOM B 3825 - schwer brennbar.





26



27



31



33



35



36



37



42



44



45



46



50



51



55



56



80



001



101



103



301



303



400



405



407



408



411



412



413



414



415



416



419



502



504



505



600



601



602



603



604



606



608



609



610



611



700



701



702



703



706



707



800



801



803



806



807



900



901

ANGEL ABITEX

CAT. A



802

**customs code**  
54072011

**features**  
100% polypropylene

**width**  
cm ± 140

**weight**  
± 228 g/m2

**dyeing**  
solution dyed product

**roll length**  
approx. 35 lm.

**abrasion resistance**  
> 100.000 rubs, ISO 12947-2

**color fastness to light**  
5/6, ISO 105 B02

**fastness to rubbing**  
dry 5, wet 4/5, ISO 105 X12

**seam slippage**  
warp 3 mm, weft 4 mm, ISO 13936-2

**pilling**  
5, ISO 12945-2

**fire resistance**  
11M - UNI 9175  
EN 1021:14 part 1/2  
BS 5852:06 crib 5  
California TB 117:2013  
IMO MED - Ftp 307 part 8

**attention**  
slight colour differences between different batches are allowed we assume no responsibility for the transfer of colour/pigment caused by clothing and accessories

A soft feel - this is the distinctive trait of Caliente; a polypropylene chain interwoven with a polyester chenille. It has a denim shot effect and a delicate, warm look in 26 different colours.



54 / 400



46 / 500



14 / 501



55 / 701



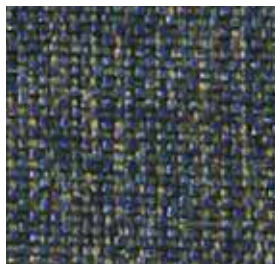
53 / 401



41 / 502



30 / 307



39 / 700



50 / 402



09 / 800



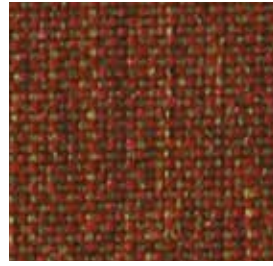
35 / 305



45 / 404



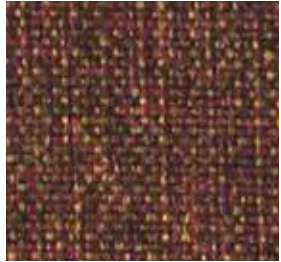
43 / 302



36 / 300



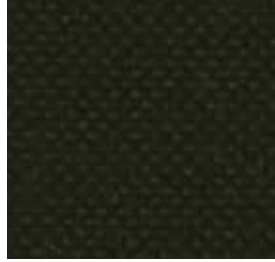
20 / 405



38 / 002



56 / 201



57 / 200

## velvety



Velvety is velvety!

The micro-velvet micro-stretch who knows how to embrace curved upholstery, but also to design anti-glare curtains or thermo-formable panels.

The natural colors and shades ranging from warm to cold colors make it smart and seductive.

On request it is also available in double height, and can be customized with custom graphics.

Velvety, the multifaceted micro-velvet is FR, sound absorbing and made in Italy.

customs code

60063200.features

100% polyester.width

cm  $\pm$  150; upon request available in 300 cm width (only rolls).weight

$\pm$  320 gr/m<sup>2</sup>.dyeing

piece dyed product.roll length

approx. 30 lm., can also be cut-to-

length at an extra cost.abrasion

resistance

> 50.000 rubs, ISO 12947-2.

color fastness to light

4-5, ISO 105 B02.fastness to rubbing

dry 5, wet 4, ISO 105 X12.seam slippage

warp 3 mm, weft 3 mm, ISO 13936-2.pilling

5, ISO 12945-2.sound absorption

ISO 354 - G-100 type.fire resistance

IIM - UNI 9175;

classe 1 - UNI 9177;

class 1 - EN 13773;

EN 1021 part 1/2;

BS EN 1021 part 1/2;

BS 7176 + A1 medium hazard;

BS 5852 crib 5;

BS 5867 part 2 type B;

BS 5867 part 2 type C;

NF-P 92 503 - M1;

NF D60-013 (AM18);

DIN 4102 - B1;

NFPA 701;

NFPA 260 Class 1;

California TB 117:2013;

IMO MED 3.20 - Ftp 307 part 8;

IMO MED 3.19 - Ftp 307 part 7;

ÖNOM B 3825 - schwer brennbar.

(in some tests the classification is subject to

the used foam)attention

slight color differences between different

batches are allowed.

# MONDO



100



101



102



103



104



105



106



200



301



302



305



307



400



401



402



403



500



501



600



601



602



603



604



607



700



701



702



703



704



705



707



708



800



801



803



901

## grisu' Frisé

### features

68% polyester, 32% polypropylene.

### width

± 140 cm.

### weight

± 400 g/m<sup>2</sup>.

### dyeing

solution dyed warp and yarn dyed weft.

### roll length

aprox. 35 lm, can also be cut-to-length at an extra cost.

### abrasion resistance

> 135.000 rubs, ISO 12947-2.

### color fastness to light

> 6, ISO 105 B02.

### seam slippage

warp 3 mm, weft 3 mm, ISO 13936-2.

### pilling

4/5, ISO 12945-2.

### sound absorption

α<sub>w</sub> 0,75 folded;  
α<sub>w</sub> 0,60 not folded;  
ISO 354 - G type.

### fire resistance

IIM - UNI 9175;  
classe 1 - UNI 9177;  
EN 1021 part 1/2;  
NF D-60 013 - A18;  
DIN 4102 - B1;  
NFPA 260 Class 1;  
California TB 117:2013;  
IMO MED 3.20 - Ftp 307 part 8;  
ÖNOM B 3825 - normal brennbar.





# MONDO



606



608



700



701



702



703



704



705



706



707



708



709



710



711



712



713



800



801



802



803



804



805



806



900



901

## avantgarde

### features

68% pvc - 1% polyurethane - 31% cotton.

### width

cm ± 140.

### weight

± 630 gr/m<sup>2</sup>.

### thickness

± 1,0 mm.

### roll length

approx. 25 lm, can also be cut-to-length at an extra cost.

### abrasion resistance

> 50.000 rubs, ISO 5470-2.

### color fastness to light

5/6, ISO 105 B02.

### fastness to rubbing

dry 4, wet 4, ISO 105 X12.

### tensile strength

warp 550 N, weft 435 N, ISO 1241.

### sustainability

phthalate free.

### fire resistance

1IM - UNI 9175;  
EN 1021 part 1/2;  
BS 5852 part 1, is 0 and 1;  
BS 5852 crib 5;  
California TB 117:2013;  
IMO MED - Ftp 307 part 8.





100



101



102



103



104



105



107



108



110



112



113



114



115



116



119



120



121



122



123



124



125



127



128



130



131



132



133



134



135



136



400



401



402



407



500



600



601



602



603



607



706

## lani

### description

**tough, felted wool quality in modern  
applicable colours**

### composition

**80% wool / 20% polyamide**

### width

**± 140 cm, ± 55 inches**

### weight

**± 640 gr/m<sup>2</sup>, ± 21 oz/yd<sup>2</sup>**

### flame retardancy

**EN 1021/ 1-2**

**BS 5852, crib 5 with FR finish**

**DIN 4102, B2 with FR finish**

**UNI VF 9175, classe 1 IM**

**Cal TB 117**

**NFPA 260, class 1**

**IMO 2010 FTP part 8**

**NF D 60-013 - AM18**



7060.01



7060.02



7060.03



7060.04



7060.05



7060.06



7060.07



7060.08



7060.09



7060.10

## Product

### Upholstery

## Description

**Plain velvet upholstery fabric with an extreme soft hand and a natural luster**

## Composition

**100% polyester FR**

## Width

**± 140 cm, ± 55 inches**

## Weight

**± 800 gr/m<sup>2</sup>, ± 26 oz/yd<sup>1</sup>**

## Flame retardancy

**EN 1021/1-2 , Pass**

**BS 5852 , Crib 5**

**NF P 92/503-507 or NF D 60-013 , M1**

**DIN 4102 , B1**

**Übereinstimmung , Pass**

**IMO 2010 FTP part 8 , Pass**

## Colorfastness to crocking

**ISO 105 X12**

wet 4-5 (scale 1-5) / dry 4-5 (scale 1-5)

## Colorfastness to light

**ISO 105 B02**

4-5 (scale 1-8)

## Seam slippage

**ISO 13936-2 - warp**

2 mm

**ISO 13936-2 - weft**

2 mm

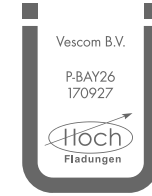
## Labels



USCG -  
EU MRA  
0038



STANDARD  
100  
S07-0023  
Hohenstein HTTI



Baustoffklasse schwerenflammbar  
DIN 4102, B1

## Care & Maintenance



## Shrinkage

Shrinkage 70° - warp -2%

Shrinkage 70° - weft -0.6%

# Ponza

7074.01 – 7074.33



# SOLE CS

**Composition**  
100% Trevira CS

**Width**  
Ca. 140 cm

**Weight**  
525 g/m<sup>2</sup> (+/- 5%)

**Abrasion resistance**  
50.000 Martindale cycles  
(EN ISO 12947-2)

**Pilling**  
4/5 (EN ISO 12945-2)

**Flammability**  
UNI 9177 - Classe 1  
NFP 92-503-507 M1  
California TB 117:2013  
EN 1021-1&2  
BS 5852-Part 0-1 (C&M)  
DIN 4102 B1  
UNI 9175 - 1.IM  
NFPA 260:2013  
IMO MSC 307(88) Annex 1 Part 7-8

**Sound absorption**  
UNI EN ISO 354:2003 w : 0,60

**Light fastness**  
5 (EN ISO 105-B02)

**Light fastness**  
5 (EN ISO 105-B02)

**Fastness to rubbing**  
Wet 4/5; Dry 4/5 (EN ISO 105X12)

**Cleaning**  
Wet cleaning warp  
Please see the ISO symbols  
Shrinkage app. 2,5%



420



421



445



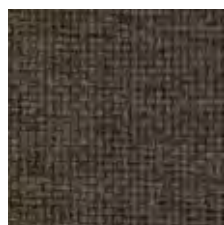
444



04



402



441



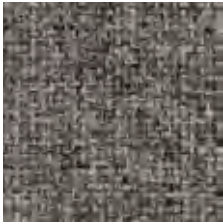
439



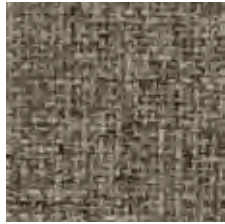
440



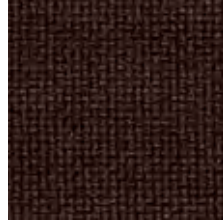
416



400



401



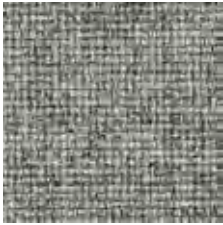
438



443



442



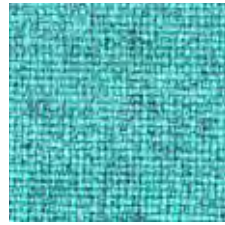
417



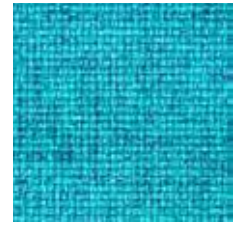
437



418



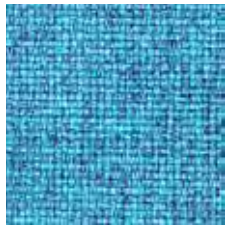
412



22



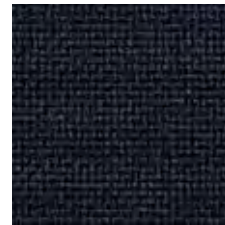
422



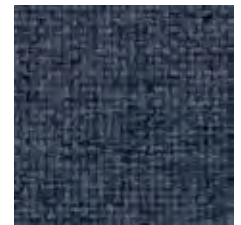
413



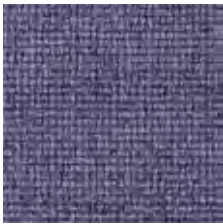
419



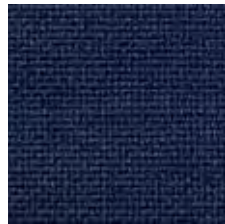
25



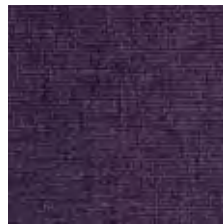
414



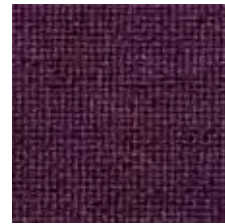
435



434



20



431



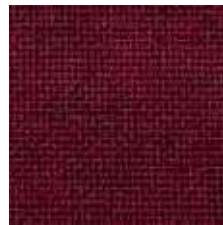
432



433



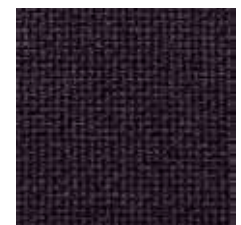
19



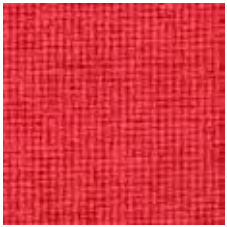
16



415



436



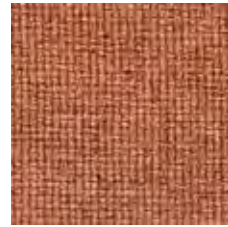
14



409



407



406



408



403



404



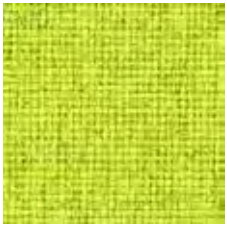
405



411



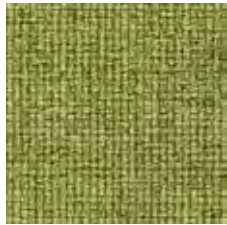
07



10



410



11

## BHALUKA 01

### COMPOSITION

70% Acrylic  
23% Polyester  
7% Cotton

### WIDTH

App. 140 cm

### WEIGHT

790 g/m<sup>2</sup> (+/- 5%)

### FLAMMABILITY

California TB 117:2013  
BS 5952 Part 0-1 (C&M)



### ABRASION RESISTANCE

>38000 Martindale cycles (EN ISO 12947-2)

### PILLING

4 (EN ISO 12945-2)

### LIGHT FASTNESS

5 (EN ISO 105-B02)

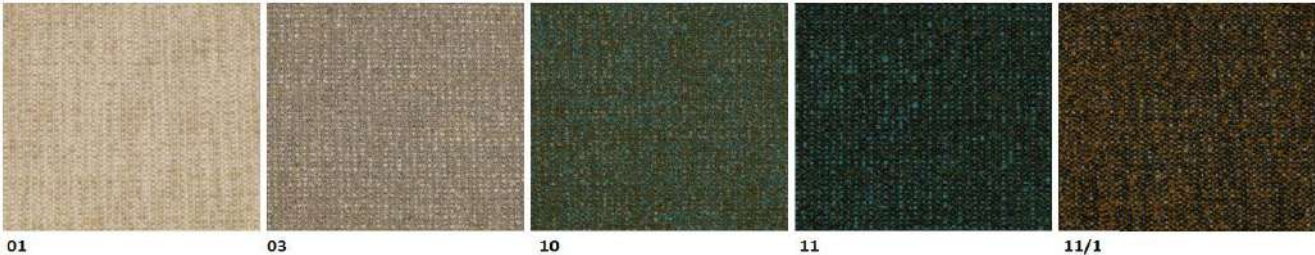
### FASTNESS TO RUBBING

Wet 3/4; Dry 5 (EN ISO 105- X12)

### CLEANING

Do not wash  
Do not bleach  
Iron at low temperature  
Gentle cleaning with PCE  
Do not tumble dry  
Spotstaining with spray detergent dry cleaning  
Please see the ISO symbols





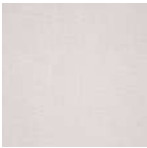
## Technical Details



## Ada

Item number 43987, KMAT 61000421

<b>Fabric width</b>	approx. 140 cm
<b>Weight per m<sup>2</sup></b>	approx. 430 g/m <sup>2</sup>
<b>Composition</b>	100% Polyester FR
<b>Flame retardancy</b>	IMO 2010 FTP Code Part 8, IMO 2010 FTP Code Part 7, M 1, 1 / M, C 1, BS 5852 CRIB 5, BS 5867 Typ B, EN 13773, DIN EN 1021-2, DIN EN 1021-1, DIN 4102 / B1 Flammability performance is dependant on the foam used.
<b>Light fastness</b>	note 5
<b>Wash fastness 40°C DIN EN ISO 105-C06</b>	note 4-5
<b>Wash fastness 60°C DIN EN ISO 6330 DIN EN ISO 5077</b>	note 4-5
<b>Wash fastness 72°C DIN EN ISO 6330 DIN EN ISO 5077</b>	note 4-5
<b>Dimensional change Washing 40°C DIN EN ISO 6330 DIN EN ISO 5077</b>	warp approx. +/-1%, weft approx. +/-1%
<b>Dimensional change Washing 60°C DIN EN ISO 6330 DIN EN ISO 5077</b>	warp approx. +/-2%, weft approx. +/-1%
<b>Dimensional change Washing 72°C DIN EN ISO 6330 DIN EN ISO 5077</b>	warp approx. +/-3%, weft approx. +/-2%
<b>Rubbing fastness DIN EN ISO 105-X12</b>	dry: note 4-5, wet: note 4-5
<b>Abrasion to Martindale DIN EN ISO 12947-2 DIN EN 14465-2006</b>	approx. 100000 rubs
<b>Pilling DIN EN ISO 12945-2</b>	Note 4 at 2000 rpm
<b>Measured sound absorption coefficient DIN EN ISO 354/DIN EN ISO 11654</b>	0.8
<b>Sound absorption</b>	Class B
<b>Care labelling</b>	
<b>Additional information</b>	
<b>State</b>	2024-12-13



1550.png



1551.png



1552.png



2550.png



2551.png



3550.png



3551.png



3552.png



5550.png



5551.png



5552.png



5553.png



5554.png



6550.png



6551.png



6552.png



6553.png



6554.png



8550.png



8551.png




8552.png

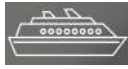
## Cosy

Item number 31106, KMAT 61000272

### Technical Details



<b>Fabric width</b>	approx. 140 cm
<b>Weight per m<sup>2</sup></b>	approx. 500 g/m <sup>2</sup>
<b>Composition</b>	100% Polyester FR
<b>Flame retardancy</b>	IMO 2010 FTP Code Part 8, 1 / M, BS 5852 CRIB 5, DIN EN 1021-2, DIN EN 1021-1, CAL TB 117, NFPA 260 Flammability performance is dependant on the foam used.
<b>Light fastness</b>	note 6
<b>Wash fastness 40°C DIN EN ISO 105-C06</b>	note 4-5
<b>Wash fastness 60°C DIN EN ISO 6330 DIN EN ISO 5077</b>	note 4
<b>Dimensional change Washing 40°C DIN EN ISO 6330 DIN EN ISO 5077</b>	warp approx. +/-3%, weft approx. +/-1%
<b>Dimensional change Washing 60°C DIN EN ISO 6330 DIN EN ISO 5077</b>	warp approx. +/-4%, weft approx. +/-1%
<b>Rubbing fastness DIN EN ISO 105-X12</b>	dry: note 4, wet: note 4-5
<b>Abrasion to Martindale DIN EN ISO 12947-2 DIN EN 14465-2006</b>	approx. 50000 rubs
<b>Pilling DIN EN ISO 12945-2</b>	Note 4-5 at 2000 rpm
<b>Care labelling</b>	
<b>Additional information</b>	
<b>State</b>	2024-12-13



1001.png



1002.png



2001.png



3001.png



31106\_2002.png



5001.png



6001.png



6002.png



6003.png



7001.png



7002.png



7003.png



8001.png



8002.png



8003.png



8004.png



8005.png



9001.png

## Harper

Item number 41278, KMAT 61000384

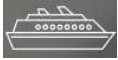
### Technical Details



<b>Fabric width</b>	approx. 140 cm
<b>Weight per m<sup>2</sup></b>	approx. 350 g/m <sup>2</sup>
<b>Composition</b>	100% Polyester FR
<b>Flame retardancy</b>	IMO 2010 FTP Code Part 8, 1 / M, BS 5852 CRIB 5, DIN EN 1021-2, DIN EN 1021-1, CAL TB 117, NFPA 260 Flammability performance is dependant on the foam used.
<b>Light fastness</b>	note 6
<b>Wash fastness 40°C</b>	note 4-5
<b>DIN EN ISO 105-C06</b>	
<b>Wash fastness 72°C</b>	note 3-4
<b>DIN EN ISO 6330 DIN EN ISO 5077</b>	
<b>Dimensional change Washing 30°C</b>	warp approx. +/-1%, weft approx. +/-1%
<b>Dimensional change Washing 40°C</b>	warp approx. +/-2%, weft approx. +/-1%
<b>DIN EN ISO 6330 DIN EN ISO 5077</b>	
<b>Dimensional change Washing 72°C</b>	warp approx. +/-4%, weft approx. +/-2%
<b>DIN EN ISO 6330 DIN EN ISO 5077</b>	
<b>Rubbing fastness</b>	dry: note 4-5, wet: note 4-5
<b>DIN EN ISO 105-X12</b>	
<b>Abrasion to Martindale</b>	approx. 75000 rubs
<b>DIN EN ISO 12947-2</b>	
<b>DIN EN 14465-2006</b>	
<b>Pilling</b>	Note 3-4 at 2000 rpm
<b>DIN EN ISO 12945-2</b>	

<b>Care labelling</b>	
-----------------------	--

<b>Additional information</b>	
<b>State</b>	2024-12-13



1001.png



1002.png



1003.png



2001.png



2002.png



3001.png



3002.png



3003.png



3004.png



4001.png



5001.png



5002.png



5003.png



6001.png



6002.png



6003.png



7001.png



8001.png



8002.png



8003.png

# Wilson

7067.01 - 7067.21

Product  
**Upholstery**

Description  
**Plain upholstery fabric made from 100% recycled plastic waste, a matte non-directional structure with a soft touch**

Composition  
**100% recycled polyester FR**

Width  
**± 150 cm, ± 59 inches**

Weight  
**± 771 gr/m<sup>2</sup>, ± 25 oz/yd<sup>1</sup>**

Flame retardancy  
**EN 1021/1-2 , Pass**  
**BS 5852 , Crib 5**  
**DIN 4102 , B1**  
**Cal TB 117-2013, section 1 , Pass**  
**IMO 2010 FTP part 8 , Pass**  
**NFPA 260 , Class 1**

Colorfastness to crocking  
**ISO 105 X12**  
wet 4-5 (scale 1-5) / dry 4-5 (scale 1-5)

Colorfastness to light  
**ISO 105 B02**  
6 (scale 1-8)

Seam slippage  
**ISO 13936-2**  
warp 4 mm / weft 2 mm

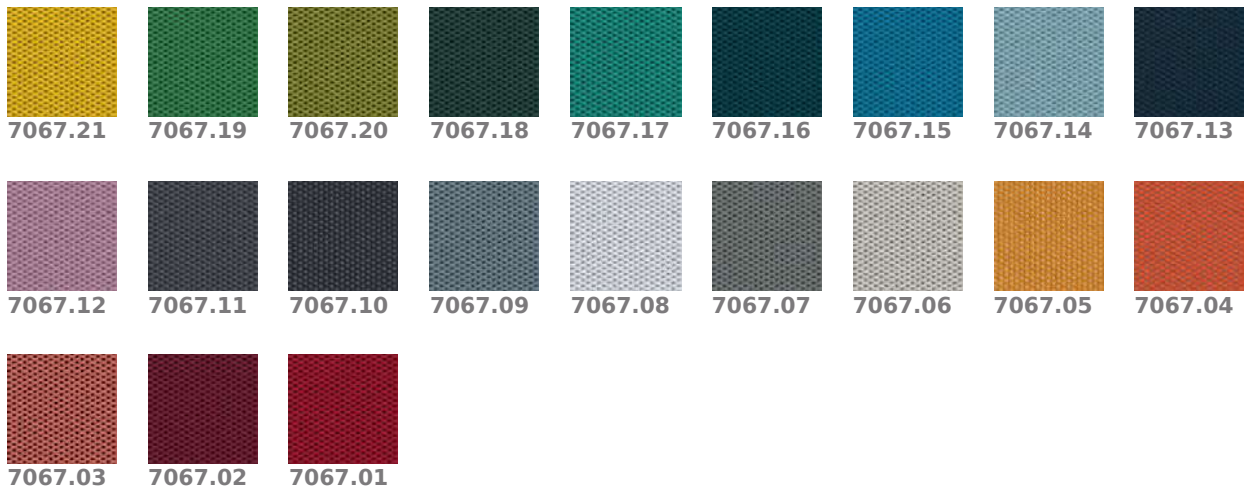
Labels



Care & Maintenance



Shrinkage  
Shrinkage 30° warp -1.6% / weft -2.8%



# Color Connect

7078.01 - 7078.43

**Product**

**Upholstery**

**Description**

**Plain upholstery fabric in a large colour range**

5 (scale 1-5) Seam slippage

**Composition**

**100% recycled polyester FR**

**Width**

**± 150 cm, ± 59 inches**

**Weight**

**± 435 gr/m<sup>2</sup>, ± 14 oz/yd<sup>1</sup>**

**Flame retardancy**

**EN 1021/1-2 , Pass**

**BS 5852 , Crib 5**

**DIN 4102 , B1**

**Cal TB 117-2013, section 1 , Pass**

**IMO 2010 FTP part 8 , Pass**

**NFPA 260 , Class 1**

**Colorfastness to crocking**

**ISO 105 X12**

wet 4-5 (scale 1-5) / dry 4-5 (scale 1-5)

**AATCC 8**

wet 5 (scale 1-5) / dry 5 (scale 1-5)

**Colorfastness to light**

**ISO 105 B02**

6 (scale 1-8)

**AATCC 16.2 opt.1 or 16.3 opt. 3**

**ISO 13936-2**

warp 3.3 mm / weft 3.3 mm **ASTM D4034**

warp 121 lbf / weft 109 lbf

**Labels**



USCG -  
EU MRA  
0038



STANDARD  
100  
S21-3365  
Hohenstein HTTI

**Care & Maintenance**



**Shrinkage**

Shrinkage 70° warp -2% / weft -1.5%



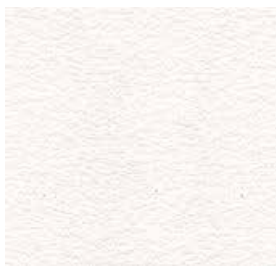


Leather: BOVINE  
 Tanning: CHROMO  
 Dyeing: BARREL ANILINE

Dry rubbing – 500 cycles (IUF 450)	Grey scale >=4
Wet rubbing – 250 cycles (IUF 450)	Grey scale >= 4
Perspiration - 80 cycles (IUF 470)	Newton/cm >=2
Finish adhesion (IUP 402)	blue scale >=5
Colour fastness to light (IUP 402)	Newton >= 20
tear resistance (IUP 40)	No surface damage or cracks >= 20.000
Flexing endurance - 50.000 cycles (IUP 20)	Ph >= 3,2

**1101 OLD NATURALE**

A solid color leather with a semi-glossy appearance. The vast assortment of colors, which is renewed over the years, accompanied by the classic Madras print, makes this item one of the most versatile and refined. Thickness 0.9 - 1.1 mm  
 Medium size 4.20 m2



1145 BIANCO OTTICO



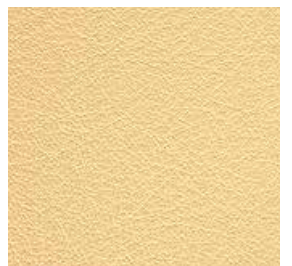
1147 BIANCO NAT



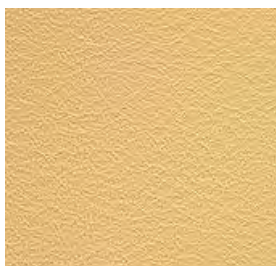
1142 MADRE PERLA



1140 CREMA



1132 VANIGLIA



1125 PAGLIA



1115 GIALLO



1110 PESCA



1167 MANDARANCIO



1168 ARANCIO



1101 OLD NATURALE



1169 MATTONE



1085 FIAMMA



1082 MELOGRANO



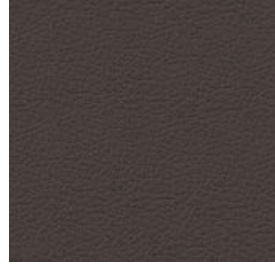
1080 BULGARO



1040 CARMELLO



1045 CACAO



1035 CIOCCOLATO



1150 TESTA DI MORO



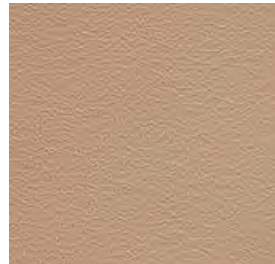
1155 DARK BROWN



1095 ICE CREAM



1090 CONFETTO



1087 ROSA ANTICO



1075 LILLA



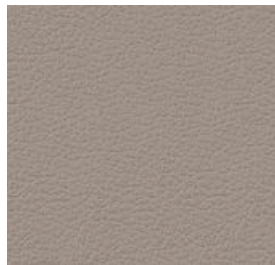
1170 VIOLETTA



1175 ZINCO



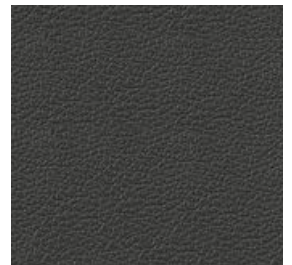
1005 ALLUMINIO



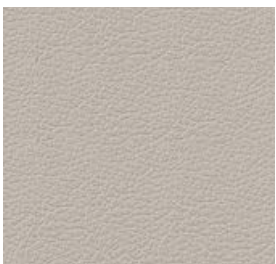
1118 STONE



1004 GRIGIO FUMO



1003 ANTRACITE



1002 CENERE



1160 RENA



1165 SENTIERO



1172 MALTA



1173 TOPO



1166 CHAMPAGNE



1050 FAGGIO



1042 NOCE



1174 MARRONE



1032 FANGO



1027 VERDE PRATO



1020 VERDE MELA



1030 MUSCHIO



1010 VERDE KJ



1000 NERO



1065 CELESTE



1171 LAVANDA



1060 AZZURRO



1055 BLU KJ



1070 PRUGNA

# Zenith

7079.01 - 7079.31

**Product**

**Upholstery**

**Description**

**Two-tonal woven grid upholstery fabric with a random all-over pixelated accent**

**Composition**

**100% recycled polyester FR**

**Width**

**± 146 cm, ± 58 inches**

**Weight**

**± 523 gr/m<sup>2</sup>, ± 17 oz/yd<sup>1</sup>**

**Flame retardancy**

**EN 1021/1-2 , Pass**

**BS 5852 , Crib 5**

**NF P 92/503-507 or NF D 60-013 , M1**

**DIN 4102 , B1**

**Cal TB 117-2013, section 1 , Pass**

**IMO 2010 FTP part 8 , Pass**

**NFPA 260 , Class 1**

**Colorfastness to crocking**

**ISO 105 X12**

wet 4-5 (scale 1-5) / dry 4-5 (scale 1-5)

**AATCC 8**

wet 5 (scale 1-5) / dry 5 (scale 1-5)

**Colorfastness to light**

**ISO 105 B02**

6 (scale 1-8)

**AATCC 16.2 opt.1 or 16.3 opt. 3**

5 (scale 1-5)

**Seam slippage**

**ISO 13936-2**

warp 4 mm / weft 3 mm

**ASTM D4034**

warp 139 lbf / weft 106 lbf

**Labels**



USCG -  
EU MRA  
0038



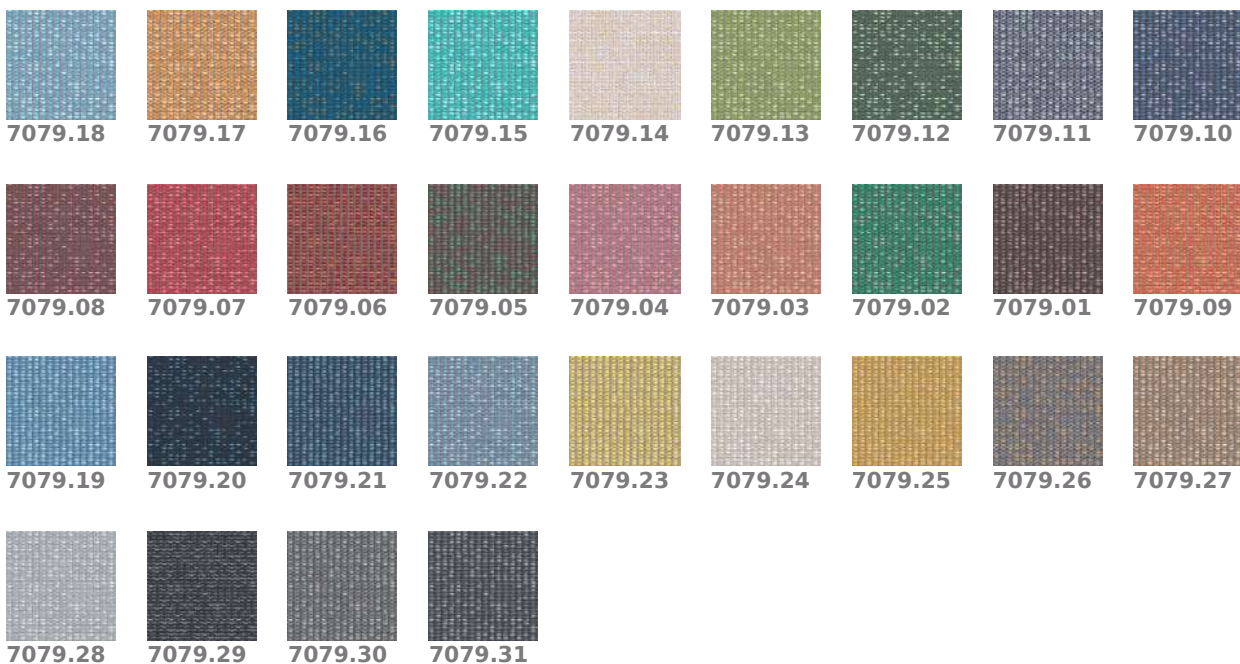
STANDARD  
100  
521-3365  
Hohenstein HTI

**Care & Maintenance**



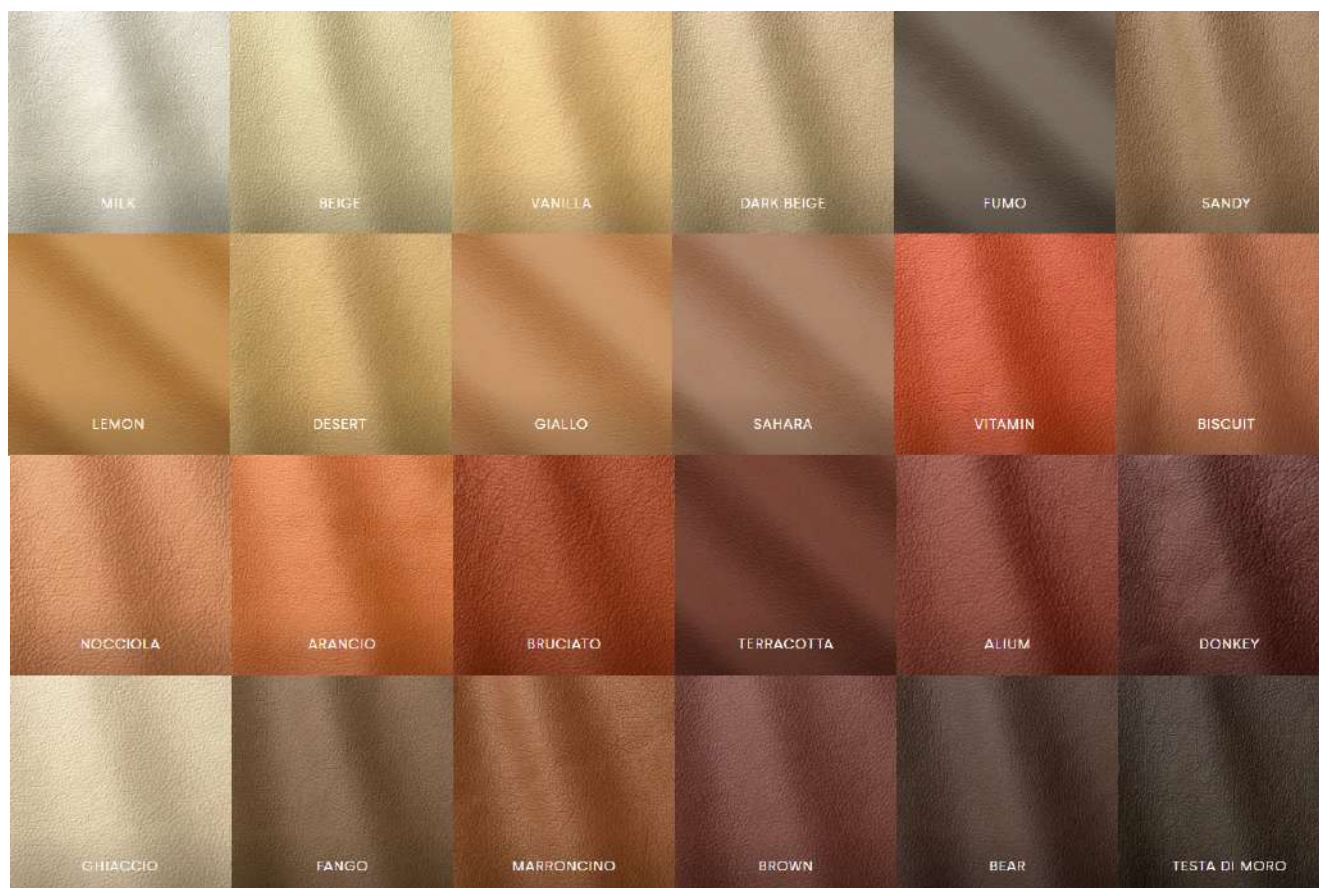
**Shrinkage**

Shrinkage 70° warp -2.8% / weft -2.2%



## Ocean

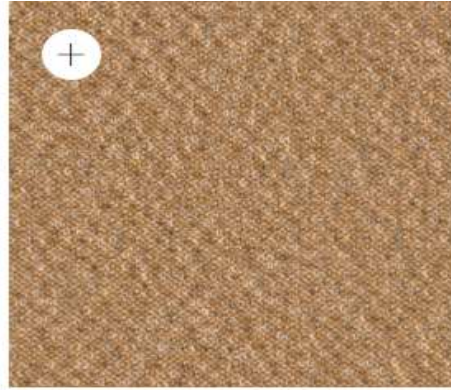
<b>Analisi</b> Test	<b>Metodo di prova</b> Test method	<b>Unità di misura</b> Measurement unit	<b>Garantito</b> Guaranteed
<b>Resistenza allo strappo pantalone</b> Tear strength (single edge tear)	UNI EN ISO 3377-1	N	≥ 20
<b>Solidità del colore allo strofinio (secco, 500 cicli)</b> Colour fastness to rubbing (dry, 500 cycles)	UNI EN ISO 11640:1998	Scala dei grigi Grey scale	≥ 4
<b>Solidità del colore allo strofinio (umido, 250 cicli)</b> Colour fastness to rubbing (wet, 250 cycles)	UNI EN ISO 11640:1998	Scala dei grigi Grey scale	≥ 4
<b>Solidità del colore allo strofinio (sudore, 80 cicli)</b> Colour fastness to rubbing (sweat, 80 cycles)	UNI EN ISO 11640:1998 ISO 11641 pH8	Scala dei grigi Grey scale	≥ 4
<b>Resistenza alle flessioni (secco, 50.000 cicli)</b> Flexing endurance (dry, 50.000 cycles)	UNI EN ISO 5402	-	Nessun danno No damage
<b>Adesione della rifinitura (a secco)</b> Finish adhesion (dry)	UNI EN ISO 11644	N/cm	≥ 2
<b>Solidità del colore alla luce artificiale (energia di esp. 16.000 kj/m<sup>2</sup>)</b> Color fastness to artificial light (exp. energy 16.000 kj/sqm)	UNI EN ISO 105 B02 (MET. 5)	Scala dei blu Blue scale	≥ 5
<b>Resistenza al fuoco, alla sigaretta e alla piccola fiamma</b> Smolder resistance, cigarette and match flame	CAL TB-117 (2013, Sec 1) BS 5852: 1979, source 0-1 BS EN 1021-1-2:2006	-	Passa Pass














## Regos

by Patricia Urquiola



	<b>DURABILITY</b> 100,000 Martindale	▼			
	<b>PILLING</b> 4-5 (ISO 1-5)	▼			
	<b>LIGHTFASTNESS</b> 6 (ISO 1-8)	▼			
<b>FIRE TESTS</b>					
ASTM E84 Class A Unadhered • BS 5852 crib 5 with treatment • IMO FTP Code 2010 Part 8 • BS 5852 part 1 • EN 1021-1/2 • US Cal. Bull. 117-2013		▼			
<b>AIRFLOW</b>					
119 Pa s/m		▼			
<b>ABSORPTION (100 MM)</b>					
0.35/Class D (Absorption flat)		▼			
	Fire resistant		Flammability		Wet and dry crocking
	Colourfastness to light		Physical properties		Abrasion - high traffic

<b>Pattern:</b>	Organic
<b>Composition:</b>	37% recycled polyester, 23% wool, 17% recycled polyester (textile waste) 10% other fibers (textile waste), 8% nylon, 5% recycled wool (textile waste)
<b>Width:</b>	Approx. 150 cm (Approx. 59")
<b>Repeat:</b>	Approx. 0/0 cm (Approx. 0"/0")
<b>Weight:</b>	1,140 g/lin. m (36.77 oz/ ly)

# Steelcut Trio 3

by Frans Dijkmeijer & Giulio Ridolfo



**DURABILITY**  
100,000 Martindale

**PILLING**  
4 (ISO 1-5)

**LIGHTFASTNESS**  
6-7 (ISO 1-8)

**VISUAL LIGHT TRANSMISSION**  
n/a%

**FIRE TESTS**  
AS/NZS 3837 class 2 • ASTM E84 Class B Unadhered • SN 198 898 5.3 with treatment • BS 5852 crib 5 with treatment • AS/NZS 1530.3 • UNI 9175 11M • NFPA 260 • ASTM E84 Class B Adhered • IMO FTP Code 2010 Part 8 • ÖNORM B1/Q1 • BS 5852 part 1 • BS 7176 Low Hazard • EN 1021-1/2 • NF D 60 013 • US Cal. Bull. 117-2013 • EN 13501 B-s2, d0 with treatment

**FASTNESS TO RUBBING**  
4-5 (Dry) 4-5 (Wet)

**AIRFLOW**  
910 Pa s/m

**ABSORPTION (100 MM)**  
0.70/Class C (Absorption flat)  
0.95/Class A (Absorption folded)

**SEAM SLIPPAGE**  
3.5 mm (warp), 2 mm (weft)

**Pattern:** Solid

**Composition:** 90% wool, worsted, 10% nylon

**Width:** Approx. 140 cm (Approx. 55")

**Repeat:** Approx. 0/0 cm (Approx. 0"/0")

**Weight:** 770 g/lin. m (24.84 oz/ly)

# Divina 3

by Finn Sködt



**Pattern:** Solid  
**Composition:** 100% wool  
**Width:** Approx. 150 cm (Approx. 59")  
**Repeat:** Approx. 0/0 cm (Approx. 0"/0")  
**Weight:** 840 g/lin. m (27.09 oz/ly)

**DURABILITY**  
45,000 Martindale

**PILLING**  
5 (ISO 1-5)

**LIGHTFASTNESS**  
5-6 (ISO 1-8)

**VISUAL LIGHT TRANSMISSION**  
n/a%

**FIRE TESTS**  
 ASTM E84 Class B Unadhered • SN 198 898 5.3 with treatment • BS 5852 crib 5 with treatment  
 • JIS L 1091 A-1 D • AS/NZS 1530.3 • UNI 9175 1IM • NFPA 260 • BS 5867 part 2 type B • IMO  
 FTP Code 2010 Part 8 • ONORM B1/Q1 • ASTM E84 Class A Adhered • NFPA 701 with  
 treatment • BS 5852 part 1 • EN 1021-1/2 • CAN ULC S109 with treatment • AS/NZS 1530.2 •  
 ASTM E84 Class A unadhered with treatment • NF D 60 013 • US Cal. Bull. 117-2013 • EN 13 773  
 class 1 with treatment • EN 13501 B-s2, d0 with treatment

**FASTNESS TO RUBBING**  
4-5 (Dry) 4-5 (Wet)

**AIRFLOW**  
380 Pa s/m

**ABSORPTION (100 MM)**  
 0.65/Class C (Absorption flat)  
 0.90/Class A (Absorption folded)

**SEAM SLIPPAGE**  
2 mm (warp), 2 mm (weft)