



Detroit Speed
Tailgate Cable Kit
 1967-86 GMC C/K Truck, 1987-1991 GMC R/V Truck
 1969-1972 Chevrolet Blazer / GMC Jimmy
 P/N: 012020DS, 012021DS & 012022DS

Upgrade the function and finish of your Chevrolet and GMC tailgate with Detroit Speed Tailgate Cables. Designed to replace outdated steel support rods, these modern rubber-coated cables provide a cleaner appearance and eliminate the rattle and vibration that plague vintage tailgates.



P/N: 012020DS Shown

Kit Contents

Item	012020DS - 1967-1972 C/K Truck	Part #	Quantity
1	Tailgate Support Cable	99010208	2
2	Tailgate Latch Cable Bracket, LH	99010213	1
3	Tailgate Latch Cable Bracket, RH	99010212	1
4	Tailgate Cable Hardware Bag	200190DS	1

Item	012021DS - 1973-1976 C/K Truck	Part #	Quantity
1	Tailgate Support Cable	99010209	2
2	Tailgate Latch Cable Bracket, LH	99010215	1
3	Tailgate Latch Cable Bracket, RH	99010214	1
4	Tailgate Cable Hardware Bag	200190DS	1

Item	012022DS - 1976-1991 C/K Truck	Part #	Quantity
1	Tailgate Support Cable	99010210	2
2	Tailgate Latch Cable Bracket, LH	99010215	1
3	Tailgate Latch Cable Bracket, RH	99010214	1
4	Tailgate Cable Hardware Bag	200190DS	1

Kit Contents - Cont.

Item	200190DS - C/K Tailgate Cable Hardware Bag	Part #	Quantity
1	Tailgate Cable Bolt	950154FS	2
2	Nut, M8-1.25 Nylock	960075FS	2
3	BHCS, 3/8-16 x 3/4 Stainless	950163FS	4
4	Washer, 3/8 AN Flat Stainless	970014FS	4

Installation Instructions:

1. Preassemble the tailgate cable onto the latch bracket. Insert the stepped tailgate bolt through the cable eyelet and tailgate latch cable bracket. Secure the bolt with the M8-1.25 nylock nut.

*NOTE Trim the heat shrink with a razor blade at the end of the crimp. Remove the heat shrink from the flat portion of the cable eyelet



2. Tighten the hardware to 10-15 ft lbs. Ensure the cable rotates freely on the bracket.
3. It is recommended to complete installation on one side of the tailgate before beginning the other. The tailgate will be supported by one support rod or cable while installation is completed on the other.
4. Open the tailgate to gain access to the factory latch brackets. Remove the factory support rod from the tailgate pulling the support rod towards you while closing the tailgate. Close the gate until the slot aligns with the pivot pin, then push the support rod outward to disengage from the tailgate
5. Remove the hardware securing the latch bracket to the bed. Factory hardware will not be reused.



Remove factory tailgate support rods

6. Install latch bracket/cable assembly onto the truck using the provided button head cap screws and washers. Latch Brackets are unique for each side, with the curved tab on the latch will face the rear of the truck.

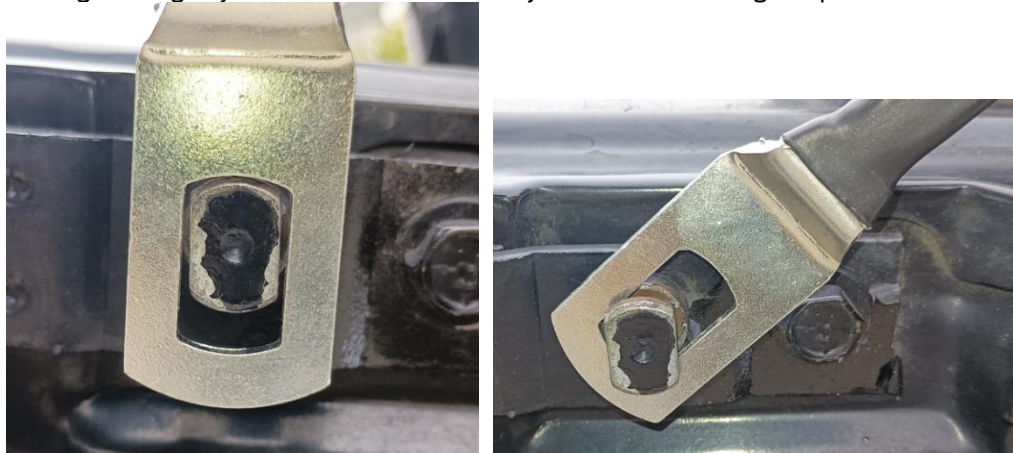
NOTE: Apply anti-seize to the treads of the hardware

The latch bracket allows adjustment for final tailgate fit. It is recommended to start with the hardware centered in the adjustment slots. Final fitment will be adjusted once both sides have been installed.



Install latch bracket / cable assembly

7. Lift the tailgate slightly and install the cable eyelet onto the tailgate pivot.



Install Tailgate Pivot

8. Check orientation of the tailgate cable eyelet with the tailgate fully open to ensure the eyelet is parallel to the the latch bracket.
Note: If the eyelet is twisted, remove from the tailgate and twist the cable 1-2 turns in the desired direction. Release the tension and check the eyelet to the tailgate.



Cable Eyelet Orientation – tailgate pivot

9. Repeat installation steps 4-8 on the opposite side of the tailgate.

10. Tailgate fitment and adjustment can begin once both sides are installed.
11. Close the Tailgate and ensure that the tailgate striker fully engages the latch bracket.
Adjust the striker until you are satisfied with the tailgate fitment.



Correct Latch Engagement



No Engagement

Adjustments:

Tailgate doesn't latch?

Adjust bracket rearward until the tailgate striker fully engages the latch bracket.

Tailgate latches, but has movement?

Adjust bracket forward to tighten fitment.

The tailgate should rest against the rubber bumper.

Installation is complete

If you have any questions before or during the installation of this product, please contact Detroit Speed at tech@detroitsspeed.com or 704.662.3272

Legal Disclaimer: *Detroit Speed is not liable for personal, property, legal, or financial damages from the use or misuse of any product we sell. The purchaser is solely responsible for the safety and performance of these products. No warranty is expressed or implied.*