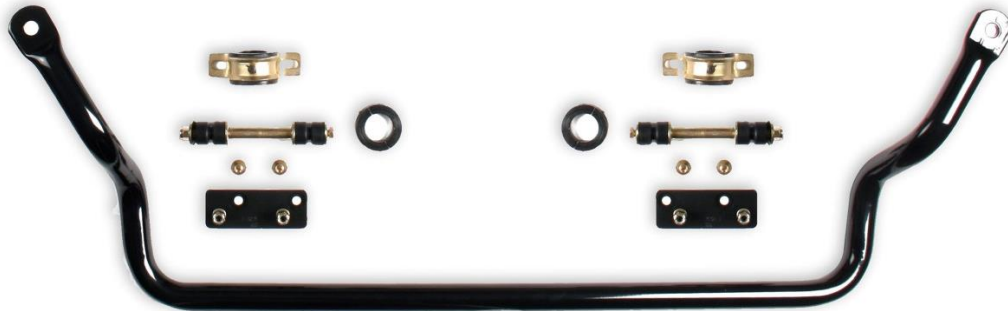


Detroit Speed
Front Sway Bar Kit
1982-2004 Chevy S10 Truck
P/N: 031424DS

The Detroit Speed Front Tubular Sway Bar Kit is designed to improve cornering and reduce body roll on your Chevy S10 truck. DSE's larger than stock, 1-7/16" O.D. tubular sway bar includes adapter plates to move bushing mounting inboard to maintain steer angle on lowered trucks. It is powder coated black and includes grease-able polyurethane bushings, low friction ball-style end links and all mounting hardware. The sway bar is compatible with factory and aftermarket control arms.



Item	Part Description	Quantity
1	1-7/16" O.D. Tubular Sway Bar	1
2	Sway Bar Adapter Plate, LH & RH	2
3	1-7/16" Double Split Lock Collar Assembly	2
4	Polyurethane Sway Bar Bushing	2
5	Sway Bar Bushing Mounting Bracket	2
6	Sway Bar End Link Grommets	8
7	Sway Bar End Link Stamped Washers	8
8	Sway Bar End Link Sleeve Spacer	2
9	Sway Bar Hardware Kit	1
10	Super Grease	1
11	Instructions	1

IMPORTANT:

All work should be performed by a qualified technician. Please read the entire set of instructions and fully understand all of the steps involved before beginning the project. Always make sure to wear the appropriate safety equipment for the job and properly support the vehicle. If you have any questions before, during, or after the installation, feel free to contact Detroit Speed by phone at (704) 662-3272 or by email at tech@detroitsspeed.com.

Hardware Kit Checklist – Detroit Speed Front Sway Bar Kit			
Part Number	Description	Quantity	Check
200177DS	Sway Bar Hardware Kit	1	
980044FS	3/8"-16 x 7" L Hex Head Bolt	2	
980027FS	3/8"-16 x 1" L Hex Head Bolt	4	
950120FS	M10-1.5 x 25 Button Head Screw	4	
960053FS	3/8"-16 Nylock Nut	6	
970023FS	3/8" SAE Washer	4	

Fastener Torque Specifications	
Application	Torque (ft.-lbs.)
Sway Bar Adapter Plate	35
Sway Bar End Link	53
Split Lock Collar	15 (Blue Loctite)

Installation Instructions

1. To begin installation, chock the rear wheels. Raise the front of the truck and support the truck under the front control arms so the front suspension is at ride height.
2. Remove the existing sway bar from the truck.
3. Locate one of the sway bar chassis spacers and place two of the provided 3/8"-16 x 1" L hex bolts through the slots in the spacer. The hex head on the bolts will lock into the slots (Figure 1).



Figure 1 –Sway Bar Mount Spacer

4. Place the spacer with bolts to the bottom side of factory sway bar mount (Figure 2). Install the spacer assembly to the sway bar mount with the provided M10-1.5 x 25mm button head bolts.

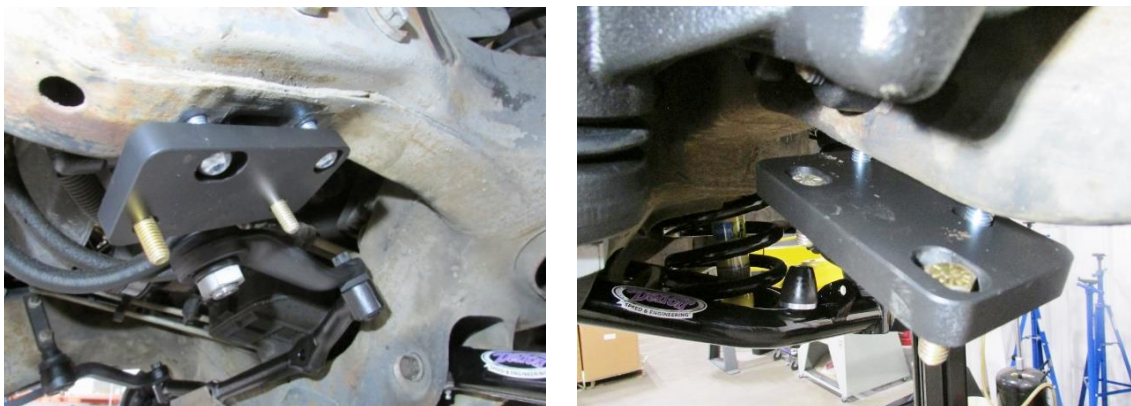


Figure 2 –Sway Bar Mount Spacer Installed

5. Repeat Steps 3 and 4 for the opposite side of the truck. Torque the M10-1.5 hardware to 30 ft.-lbs.
6. Install the urethane bushings on the sway bar using the Super Grease provided (Figure 3). Slide the sway bar bushing brackets over the bushings. **NOTE:** You can leave the plastic sleeve on the bar to protect the powder coat while installing the bar.



Figure 3 - Grease & Install Bushings

7. Position the DSE sway bar to the truck. Place the sway bar bushing brackets over the 3/8"-16 x 1" L hex head bolts that were installed in the spacers in Step 3.
8. Install the sway bar to the spacer bolts using the provided 3/8"-16 Nylock nuts (Figure 4). Center the sway bar in the truck and tighten the bolts. Do not torque at this time.



Figure 4 - Install Sway Bar Brackets

NOTE: If you are using DSE lower control arms you will use the sway bar end links that come with the control arms. If you are using factory lower control arms you will use the sway bar end links that come with the sway bar kit. Go to the next step if you have DSE lower control arms. Go to Step 11 if you have factory lower control arms.

9. Locate the sway bar end links. Place one of the provided M12 washers over the threads of the ball joint stud. Place one of the stamped washers over the thread on the end link hex adapter followed by one of the grommets. Place this end of the end link through the sway bar mounting hole in the lower control arm (Figure 5 on the next page).



Figure 5 - Locate End Links

10. Place the ball joint stud on the end link through the mounting tab on the DSE lower control arm. The stud will point toward the center of the truck. Place another provided M12 washer over the threads followed by the provided M12-1.75 Nylock nut (Figure 6). Tighten the hardware, do not torque at this time. Repeat this step for the opposite side of the truck. Continue to Step 13.

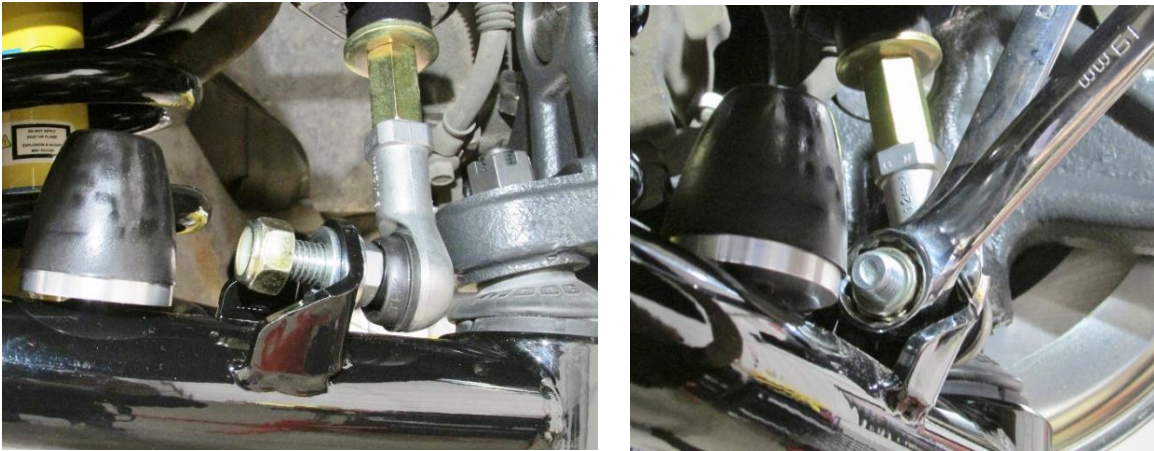


Figure 6 - Install End Link Stud

11. Locate the sway bar end link hardware. Place one of the provided stamped washers and end link grommets over the provided 3/8"-16 x 7" L hex head bolt. Place the end link assembly through the factory sway bar mounting hole in the lower control arm. Place another end link grommet and stamped washer over the hex head bolt and slide them up to the lower control arm (Figure 7).

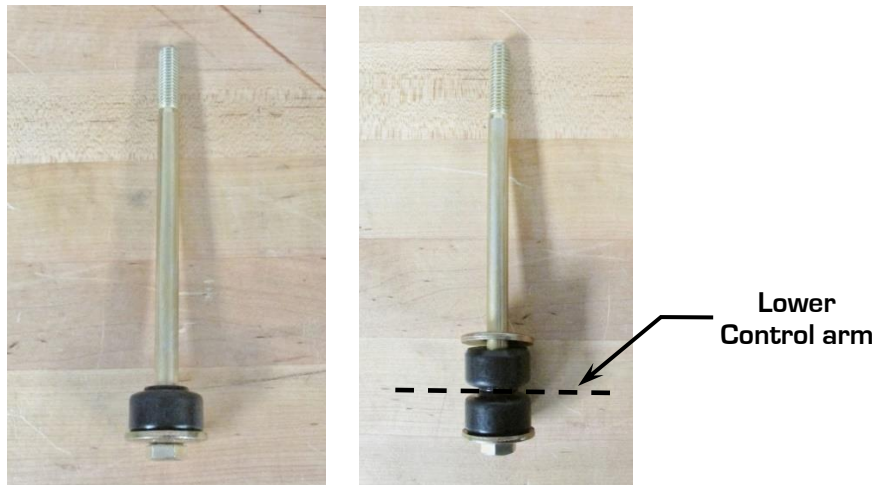


Figure 7 - Assemble End Link

12. Place the provided end link sleeve spacer over the hex head bolt followed by another stamped washer and end link grommet. (Figure 8). Repeat this process for the opposite side of the truck.

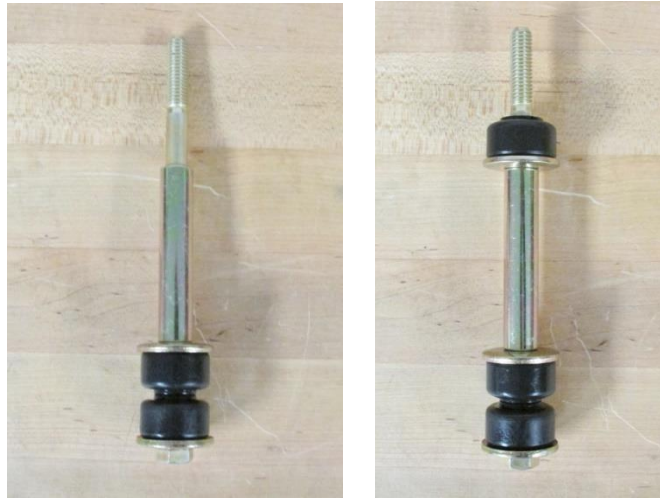


Figure 8 - Assemble End Link

13. Rotate the sway bar as needed and install the sway bar end links into the sway bar mounting holes. Place another sway bar grommet and stamped washer over the threads of both end link assemblies (Figure 9). Thread the provided 3/18-16 Nylock nut onto the threads and leave loose for now.



Figure 9 - Install Sway Bar End Links

14. Set the vehicle at ride height. Tighten both M12-1.75 Nylock nuts and torque to 53 ft-lbs. on both sides of the truck (Figure 10).



Figure 10 - Tighten End Link to Lower Control Arm

15. Tighten the 3/8"-16 Nylock nuts on the end links on both sides of the truck (Figure 11). Do not overtighten, the end links are tight when the polyurethane bushings start to compress.



Figure 11 - Tighten End Link to Sway Bar

16. Next, torque the 3/8"-16 fasteners that were installed in Step 8 in the sway bar bushing brackets to 35 ft-lbs. (Figure 12).



Figure 12 - Torque Bracket Hardware

17. Separate the split lock collars into two pieces and place them around the sway bar to the inside of the sway bar bushings.
18. Re-assemble the collars using medium strength blue Loctite 242 on the bolts and torque to 15 ft-lbs. **NOTE:** Position the collars tight to the urethane bushings when installing (Figure 13).

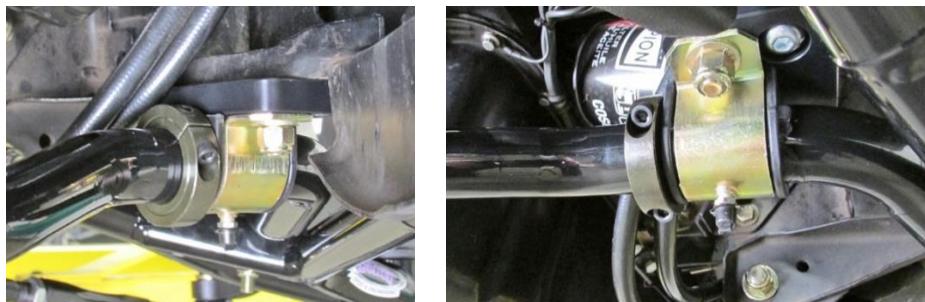


Figure 10 - Install Split Lock Collars

19. The installation is now complete.

If you have any questions before or during the installation of this product, please contact Detroit Speed at tech@detroitsspeed.com or 704.662.3272