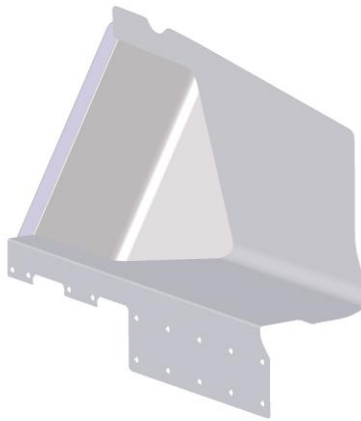


Detroit Speed
Tire Clearance Panel Kit
1979-93 Ford Mustang
P/N: 010508DS

The Detroit Speed, Fender Apron Kit improves wheel and tire clearance on your 1979-93 Ford Mustang. The kit provides an attractive way to smooth the fender aprons on your mustang, adding that custom touch to your build. When used with the Detroit Speed Short Long arm conversion, it provides additional tire clearance at full steering lock.



Item #	Description	Quantity
1	Fender Apron Panel, LH & RH	1
2	Tire Clearance Panel, LH & RH	1

IMPORTANT:

All work should be performed by a qualified technician. Please read the entire set of instructions and fully understand all of the steps involved before beginning the project. Always make sure to wear the appropriate safety equipment for the job and properly support the vehicle. If you have any questions before, during, or after the installation, feel free to contact Detroit Speed by phone at (704) 662-3272 or by email at tech@detroitsspeed.com.

NOTE:

This kit is intended for customizing the engine bay of your Fox Body Mustang. Relocation of many underhood components is required, such as battery tray, air intake, and some electrical components.

NOTE:

Fabrication, welding and painting required.

Installation:

1. Remove all underhood components located in the front fender apron area to gain access to sheet metal
2. Remove the battery and the battery tray from the vehicle (Figure 1). **NOTE:** You will need to relocate the battery in the vehicle



Figure 1 – Gain access to fender aprons

3. Using the included panels as a template, lay the panels on top of the factory apron. Trace the outline to determine the area that will be covered.
4. Offset the trace line 1" inward to provide a weld flange, remove the factory sheet metal shown (Figure 2).



Figure 2 – Remove sheet metal

5. Fit tire clearance panel first. Punch plug weld holes in the flanges of the part as shown, 1/4" holes with even spacing are recommended. Tack or cleco into place. (Figure 3)



Figure 3 –

6. Fit Apron panel to tire clearance panel and factory structure. Punch plug weld holes along the edge of the factory sheet metal. Trimming may be required to fit to you specific vehicle.

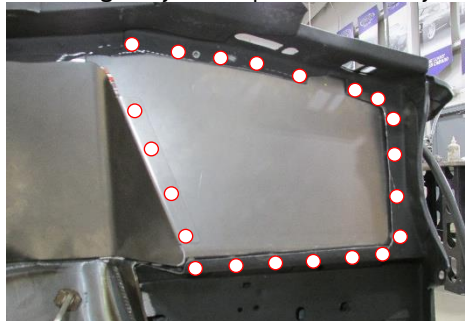


Figure 4 – Test Fit Fender Apron Panel

7. The apron panel will extend to the inner portion of the frame rail. This adds additional “boxing” to the sheet metal rails, adding stiffness to the structure



Figure 5 - Apron Panel Fitment and plug weld locations

8. Plug weld the tire clearance panel into place first. Grind plug welds flush where the apron panel will overlap. Continue fitting and welding the front apron panel.
NOTE: Apply weld thru primer to flanges that will be overlapped to deter corrosion.

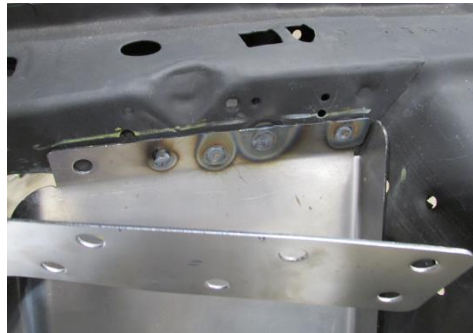


Figure 6 - Weld fender clearance panel first

9. Seam weld the joining corners of the panels.

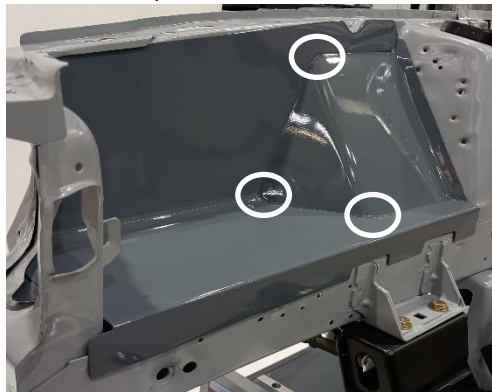


Figure 7 - Seam weld locations

10. Grind plug welds for a smooth appearance.
11. Complete installation on both sides of the engine bay
12. Body work and finish panels in your desired method. It is recommended to apply seam sealer to all exposed sheet metal joints.



Figure 8 – Complete Installation

If you have any questions before or during the installation of this product, please contact Detroit Speed at tech@detroitsspeed.com or 704.662.3272

Legal Disclaimer: *Detroit Speed is not liable for personal, property, legal, or financial damages from the use or misuse of any product we sell. The purchaser is solely responsible for the safety and performance of these products. No warranty is expressed or implied.*