

Detroit Speed and Engineering
Front Sway Bar Kit
1979-93 Ford Mustang
P/N: 031423DS

The Detroit Speed Front Tubular Sway Bar Kit improves cornering ability and reduces body roll on your Fox Body Mustang. DSE's 1-7/16" adjustable tubular sway bar provides the option for 2 roll rates, allowing the user to fine tune the handling of their vehicle. The unique profile and relocation brackets provide maximum wheel and tire clearance during full steering lock. The DSE Sway bar is powdercoated gloss black and includes mounting hardware, urethane bushings, and swivel ball endlinks.

The sway bar kit is configured for use with DSE speed kits and Short Long Arm Conversion. See notes for use stock and other aftermarket control arms.



Item	Part Description	Quantity
1	1-7/16" O.D. Tubular Sway Bar	1
2	Front Sway Bar Mount, LH & RH	2
3	1 7/16 Polyurethane Sway Bar Bushing	2
4	Sway Bar Bushing Mounting Bracket	2
5	Adjustable Sway Bar End Link	2
6	1-7/16" Double Split Lock Collar Assembly	2
7	Sway Bar Hardware Kit	1
8	Super Grease	1
9	Instructions	1

IMPORTANT:

All work should be performed by a qualified technician. Please read the entire set of instructions and fully understand all of the steps involved before beginning the project. Always make sure to wear the appropriate safety equipment for the job and properly support the vehicle. If you have any questions before, during, or after the installation, feel free to contact Detroit Speed by phone at (704) 662-3272 or by email at tech@detroitsspeed.com.

Hardware Kit Checklist - Detroit Speed Front Sway Bar Kit			
Part Number	Description	Quantity	Check
200166	Sway Bar Hardware Kit	1	
980073FS	7/16"-14 x 1" L Hex Head Bolt	4	
980027FS	3/8"-16 x 1" L Hex Head Bolt	4	
960017FS	7/16"-14 Nylock Nut	4	
970042FS	7/16" SAE Washer	8	
970023FS	3/8" SAE Washer	4	

Fastener Torque Specifications	
Application	Torque (ft.-lbs.)
Sway Bar Chassis Spacer	45
Sway Bar End Link	45
Split Lock Collar	15 (Blue Loctite)

NOTE:

Installation with factory control arms requires DSE PN 030221DS Endlinks (Sold Separately). Follow steps 13-15 for installation

NOTE:

The DSE Tubular Sway bar has adjustable rate to allow the user to fine tune the handling balance or their vehicle. Nominal Setting is the Soft Rate. Increasing front sway bar rate lessens body roll and moves balance toward understeer.



Installation Instructions

1. To begin installation, chock the rear wheels. Raise the front of the vehicle and support the vehicle under the front control arms so the front suspension is at ride height.
2. Remove the existing sway bar from the vehicle.
3. Locate the sway bar mounts and bolt them to the bottom side of the frame rail on both sides of the vehicle. Use the provided 7/16"-14 x 1" L hex head bolts, washers and Nylock nuts (Figure 1). Snug hardware but allow bracket to have some movement.

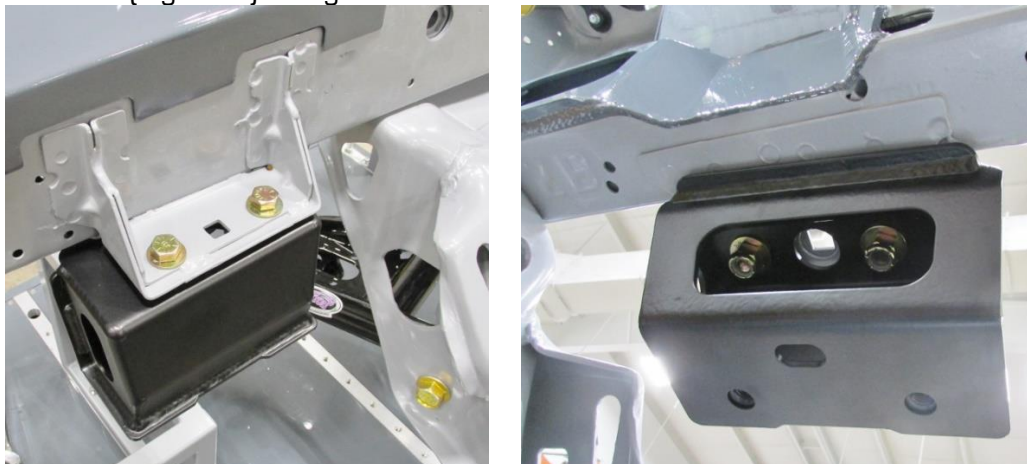


Figure 1 -Sway Bar Mount Installed

- Lubricate the inside of the urethane bushings using the provided Super Grease. Install the bushing onto the sway bar in the noted areas. Install sway bar bushing brackets over the bushings (Figure 2) **NOTE:** You can leave the plastic sleeve on the bar to protect the powder coat while installing the bar.



Figure 2 - Grease & Install Bushings

- Position the DSE sway bar to the vehicle and bolt it up to the sway bar mounts using the provided 3/8"-16 x 1" L hex head bolts and washers (Figure 3). The Center of the sway bar will hang below and in front of the engine Center the sway bar in the vehicle and snug the bolts. Do not torque at this time.



Figure 3 - Install Sway Bar Bracket

Endlink Installation With Detroit Speed Control Arms

- Locate the sway bar end links. Remove the hardware from the end links. Measure the stud to stud length on the end links and adjust so they measure 3-3/4" (Figure 4).



Figure 4 - Measure End Links

7. Install one the “female” end of the end link into the bracket on the lower control arm, Loosely install the 7/16-20 Nylock nut and washer (Figure 5).



Figure 5 - Install End Link to Lower Control Arms

8. Rotate the sway bar as needed and install the sway bar end link into the sway bar mounting hole. Use the Soft setting as the nominal position. Install the 7/16-20 Nylock nut and washer onto the sway bar end link stud (Figure 6).



Figure 6 - Install End Link to Sway Bar

9. Tighten the hardware on the endlink studs to 45 ft-lbs. Then tighten the Jam nut against the female portion of the endlink.(Figure 7).



Figure 7 - Tighten End Link to Sway Bar

Factory or some aftermarket control arms

NOTE: Endlink part # 030221DS is required. Sold separately, quantity of 2 required.

10. Using a Drill, open the sway bar holes with a .484" (31/64) drill bit.
11. Install the Endlink in the nominal (Soft) setting in the orientation shown (Figure 8). The endlink will be on the outer side of the sway bar. The high durometer bushings sandwich the lower control arm.
12. Torque M12 nut to 45 ft lbs. Tighten M10 nut until bushings squish 1/16" per side

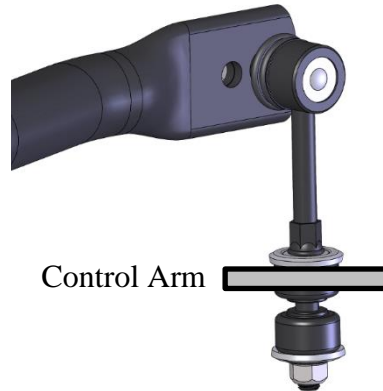


Figure 8 – Stock Control Arm

Endlink Orientation

All Installations

13. Ensure the sway bar is centered in the vehicle.
Torque the 3/8"-16 fasteners in the sway bar bushing brackets to 35 ft-lbs.
Torque the 7/16"-14 fasteners inside the bracket to 45 ft-lbs. (Figure 9).



Figure 9 – Torque Bracket Hardware

14. Separate the split lock collars into two pieces and place them around the sway bar to the inside of the sway bar bushings. **NOTE:** Position the collars tight to the urethane

bushings when installing. Re-assemble the collars using medium strength blue Loctite 242 on the bolts (Figure 10). Torque to 10 ft-lbs.
These collars prevent any side to side movement of the sway bar.



Figure 10 - Install Split Lock Collars

15. The installation is now complete. Thank you for choosing Detroit Speed and Engineering!

If you have any questions before or during the installation of this product, please contact
Detroit Speed at tech@detroitsspeed.com or 704.662.3272

Legal Disclaimer: *Detroit Speed is not liable for personal, property, legal, or financial damages from the use or misuse of any product we sell. The purchaser is solely responsible for the safety and performance of these products. No warranty is expressed or implied.*