

QA1
GO DRIVE IT.



QA1 FRONT SWAY BAR 99-06 CHEVROLET SILVERADO 1500/GMC SIERRA 1500, 2007
SILVERADO 1500 CLASSIC/SIERRA 1500 CLASSIC—INSTALLATION INSTRUCTIONS: 52869

WELCOME TO QA1!

OUR COMMITMENT

Congratulations on your purchase of this high-quality QA1 99-06 SILVERADO 1500/SIERRA 1500, 2007 SILVERADO 1500 CLASSIC/SIERRA 1500 CLASSIC front sway bar assembly. They are engineered to the highest standards, utilizes the finest materials, and is built with exceptional craftsmanship and attention to detail.

While we understand your eagerness to start your build, please remember that your safety is our utmost priority. Always use an approved and appropriately rated jack, jack stand, or automotive lift, and take all necessary safety precautions to ensure the job is completed safely and correctly.

Before you start, read and understand all instructions thoroughly. With hand tools and essential equipment, you can do the main assembly and setup of your new sway bar in your home garage, but if you feel unsure of your abilities during the assembly or installation and need some help or have any uncertainties, please seek the assistance of a qualified mechanic or automotive repair shop.

If you have any product questions or need guidance, please don't hesitate to call and speak with QA1 technical support at 952-985-5675.

Remember, we're here to support you every step of the way and are committed to ensuring your assembly and installation process is successful and enjoyable. We wish you all the best!

BEFORE INSTALLATION

Before you begin the QA1 99-06 SILVERADO 1500/SIERRA 1500, 2007 SILVERADO 1500 CLASSIC/SIERRA 1500 CLASSIC front sway bar installation, read and understand these instructions carefully. If instructions are not correctly followed, personal injury, equipment, or product damage can result.

Products that have been installed are not eligible for returns. To prevent mistakes, thoroughly read these instructions before you start the shock assembly procedure.

Check your order as soon as possible upon delivery. QA1 has provided parts list tables and images, as shown on pages 4 and 5. Compare your order's contents against the tables. Call your authorized dealer immediately if you discover anything missing from your order.

This kit requires no welding to assemble and install.

It is important to wear the appropriate personal protective equipment (PPE). However, the responsibility does not end there. Follow the manufacturer's instructions for safe use when working with power tools, and be cautious and responsible in your work. Make sure to ventilate combustible vapors and remove any nearby flammable materials.

ABOUT THIS MANUAL

PURPOSE

These instructions outline the installation of the QA1 99-06 SILVERADO 1500/SIERRA 1500, 2007 SILVERADO 1500 CLASSIC/SIERRA 1500 CLASSIC front sway bar. This sway bar is designed to work with QA1 lower control arms. It will not work with factory lower control arms.

ITS CONTENTS

The information that follows is described in this instruction set:

- Required tools and supplies.
- Safety, hazard, and warning rules.
- Product overview and included parts.
- Installation and the setup procedures required for use.

Pages with images will have paragraphs and sentences with callout numbers that refer to their respective images, steps, and parts.

Procedures, once described in the text, are generally not repeated. When it is necessary to refer to another procedure, the page and step reference will be given.

REQUIRED TOOLS AND SUPPLIES

- Floor Jack
- Jack Stands
- SAE and Metric Wrench Set
- SAE and Metric Socket Set
- SAE and Metric Hex Bit Set
- Torque Wrench (lb-ft)
- Anti-Seize Lubricant

SAFETY FIRST

- Work on your vehicle in an appropriate location.
- Park your car on a level surface.
- Use wheel chocks to prevent vehicle roll.
- Check your owner's manual for the correct jack lift points.
- Always support your vehicle with jack stands.
- Wear personal protection like safety glasses, gloves, and a fine particle respirator mask.
- Never use compressed air to clean brake or metal grinding dust from the brake, suspension components, frame, or rear axle housing.
- Grind metal only in a well-ventilated area, and wear a respirator until the dust has settled and the work area air has been cleared.
- Dispose of damaged or old parts in accordance with local laws. Do not throw any hazardous waste in the trash.
- Follow the manufacturer's instructions for safe use when working with power tools, and be cautious and responsible in your work.

CONTENTS

QA1 FRONT SWAY BAR..... 4-10

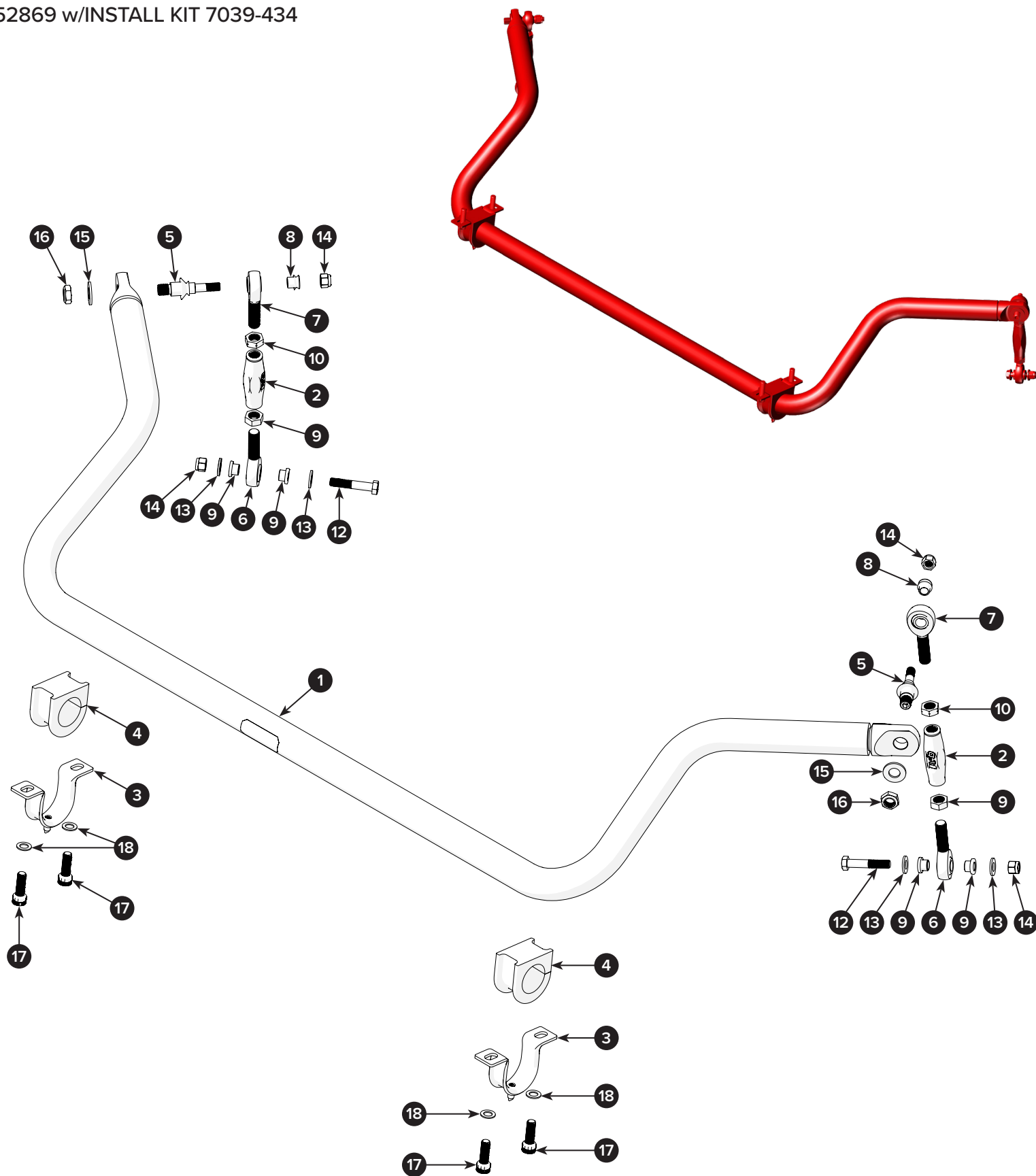
PARTS LIST 4

VEHICLE PREPARATION 6

FRONT SWAY BAR ASSEMBLY 7

WARRANTY.....11

99-06 SILVERADO 1500/SIERRA 1500, 2007 SILVERADO
1500 CLASSIC/SIERRA 1500 CLASSIC FRONT SWAY BAR
52869 w/INSTALL KIT 7039-434



1999-2007 SILVERADO/SIERRA FRONT SWAY BAR ASSEMBLY

POSITION	PART #	DESCRIPTION	QTY	TORQUE SPECIFICATION
1	7838-1092	SWAY BAR, FRONT, 1-1/2" BLACK	1	—

1999-2007 SILVERADO/SIERRA FRONT SWAY BAR INSTALL KIT 7039-434

POSITION	PART #	DESCRIPTION	QTY	TORQUE SPECIFICATION
2	9033-550	SLEEVE, ALUMINUM HEX, .875" X 3.00"	2	—
3	9032-465	BRACKET, SWAY BAR BUSHING FRAME MOUNT	2	—
4	9032-464	BUSHING, SWAY BAR, 1-1/2"	2	—
5	9029-309	HIGH MISALIGNMENT STUD	2	—
6	XMR8	ROD END (X) ENDURA ALLOY HT	2	—
7	XML8	ROD END (X) ENDURA ALLOY HT	2	—
8	SG8-64	HIGH MISALIGNMENT SPACER, .5" OD	2	—
9	9004-178	SPACER, STEPPED 1/2" OD X .125"	4	—
10	JNR8S	JAM NUT, STEEL 1/2-20 RH	2	30 lb-ft
11	JNL8S	JAM NUT, STEEL 1/2-20 LH	2	30 lb-ft

1999-2007 SILVERADO/SIERRA FRONT SWAY BAR HARDWARE KIT 7039-438

POSITION	PART #	DESCRIPTION	QTY	TORQUE SPECIFICATION
12	9012-249	BOLT, HEX 3/8-16 X 2"	2	30 lb-ft
13	9005-256	WASHER, FLAT 3/8" SAE	4	—
14	N/A	NUT, NYLOCK 3/8-16	4	30 lb-ft
15	9005-228	WASHER, FLAT 1/2" SAE	2	—
16	9014-30	NUT, NYLOCK JAM 1/2-20	2	45 lb-ft
17	N/A	BOLT, SHCS, M10-1.5 X 30mm, FULL THREAD	4	35 lb-ft
18	N/A	WASHER, FLAT 3/8" MACHINE SCREW	4	—

Note: The part positions listed above will be called out in this installation manual as a visual reference to their respective positions during the installation procedure. Refer to these pages during the installation. Count and compare all parts and fasteners to the list above. If parts are missing, contact QA1 at sales@qa1.net.



Installer's Note: This instruction set shows only the frame and chassis of the 99-06 Silverado/Sierra pickup truck. The body has been removed for visual clarity.

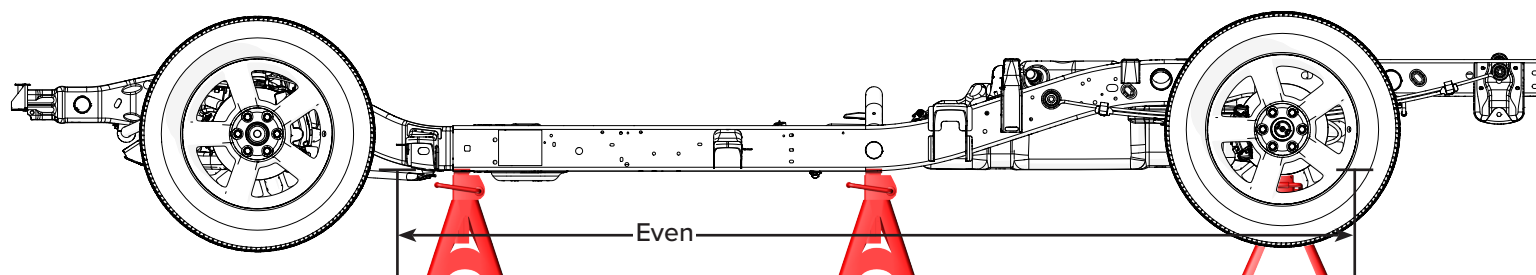
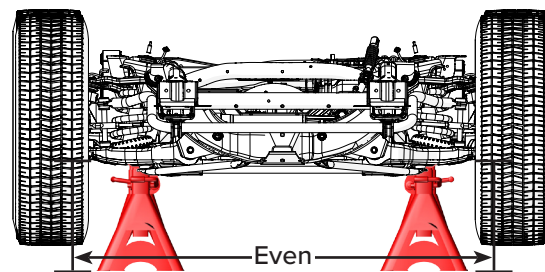
1

Use a floor jack and lift the vehicle at its designated lift points.

To access the front and rear suspension, set the vehicle on jack stands (shown) or a hydraulic lift under the frame as shown.

Note: Jack stands must be level and evenly positioned for safe vehicle load. Adjust the jack stands as necessary.

In this image, a jack stand is also shown under the rear differential.



Installer's Note: This sway bar only works with the QA1 lower control arm. It will not work with any other LCA to include the factory version.

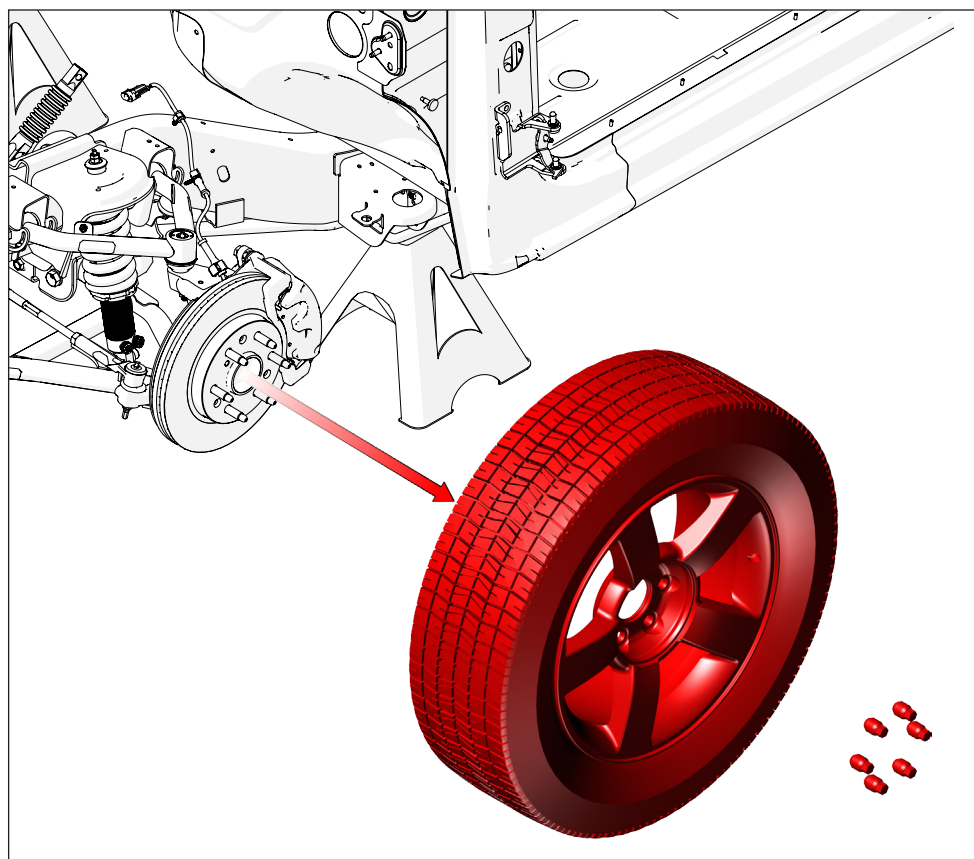
These instructions begin on the front driver's side of the vehicle and assumes that the QA1 lower control arm is installed.

The procedure to replace the front sway bar on the passenger side is the same as that for the driver's side.

2

If you had just installed the QA1 lower control arm and will now add the sway bar, the wheel has already been removed. Proceed to step 3.

Remove the lug nuts and wheels from both the left and right sides of the front of the vehicle for new a sway bar installation.



3

First, turn one LH jam nut (10) onto the LH rod end (7) until it stops.

Now, apply anti-seize to the rod end threads.

Then, turn the LH rod end into the left-hand threaded end of the aluminum hex sleeve (2) until it is halfway in (8-10 threads).

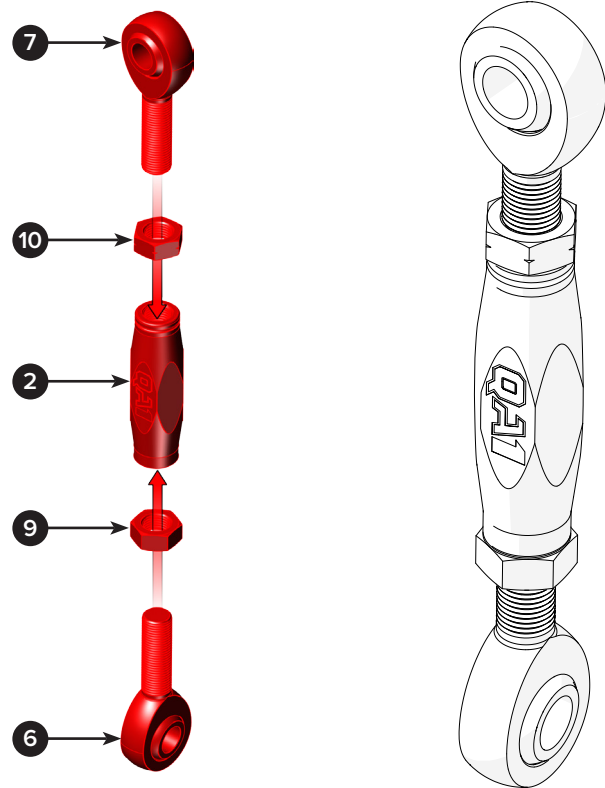
Next, take one RH jam nut (9) and turn it onto the RH rod end (6) until it stops.

Turn the RH rod end into the right-hand threaded end of the hex sleeve (2) until it is halfway in (8-10 threads).

Torque the RH jam nut to 30 lb-ft. The LH jam nut will be torqued after final adjustments are completed.

Note: An equal amount of exposed threads will allow for maximum future adjustability.

Finally, repeat this complete assembly procedure for the other sway bar end link.

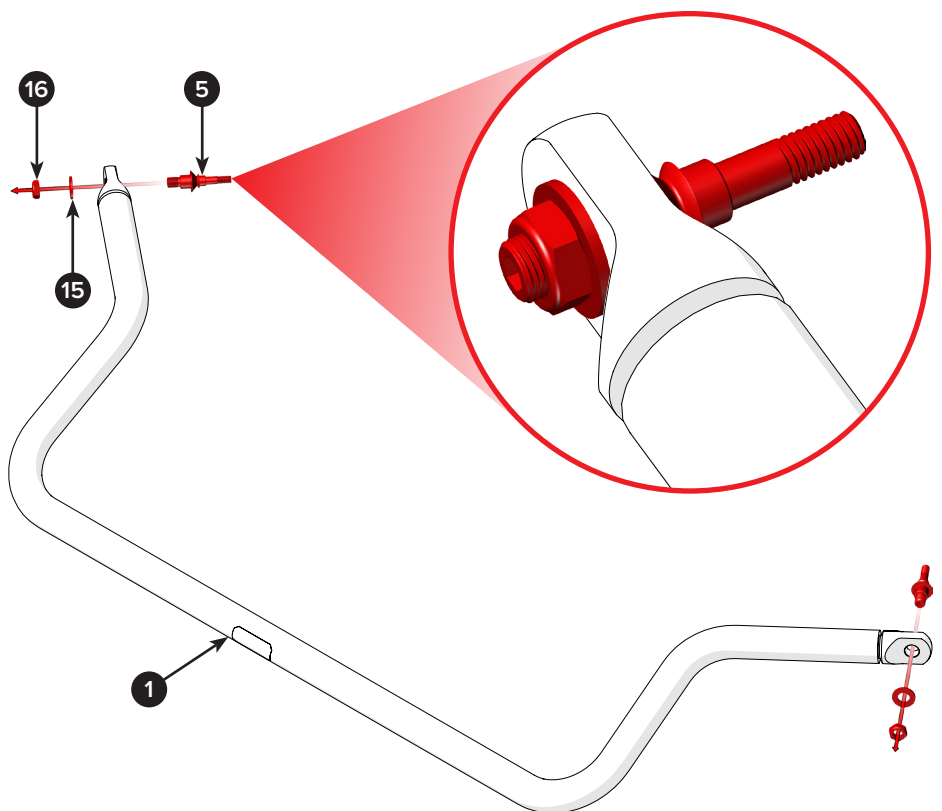

4

Insert one high misalignment stud (5) through a sway bar (1) end.

Then, put a flat washer (15) and Nylock jam nut (16) onto the large threaded end of the stud.

Use a 1/4" hex bit to hole the stud and torque the jam nut to 45 lb-ft.

Repeat for the other sway bar end.



5

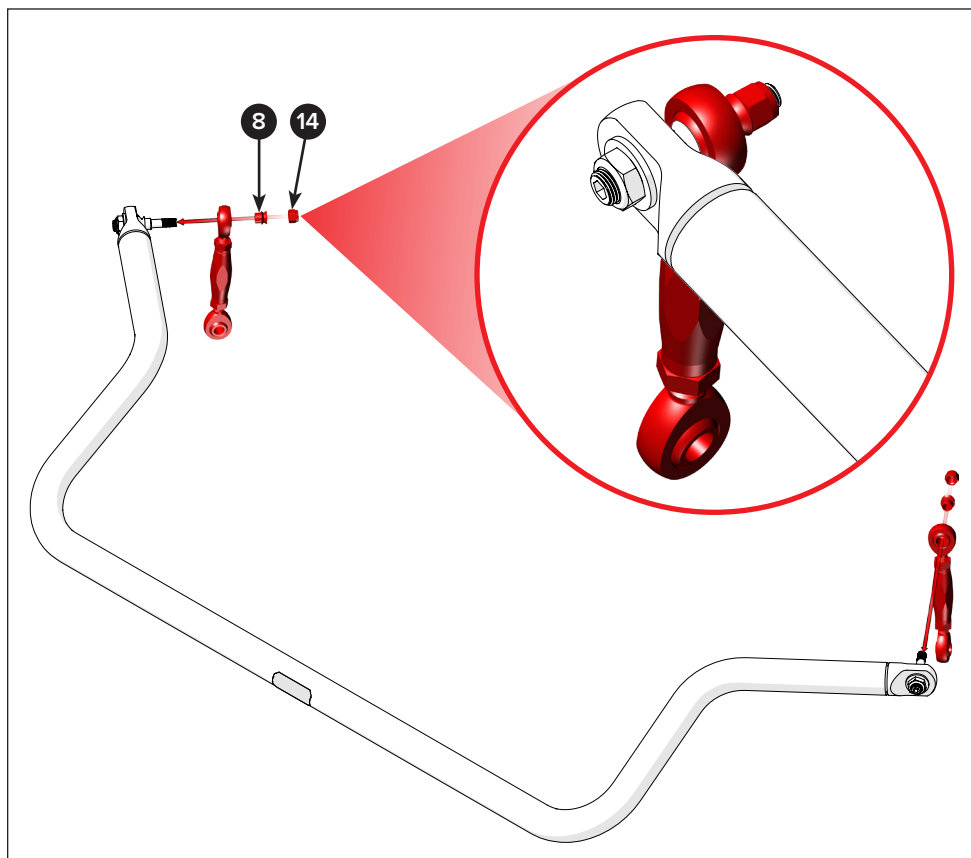
Put one of the end links onto the small end of the misalignment stud.

Push one high misalignment spacer (8) into the upper end link.

Use a Nylock nut (14) onto the misalignment stud.

Use a 1/4" hex bit to hole the stud and torque the Nylock nut to 30 lb-ft.

Repeat the installation procedure for the other sway bar end link.

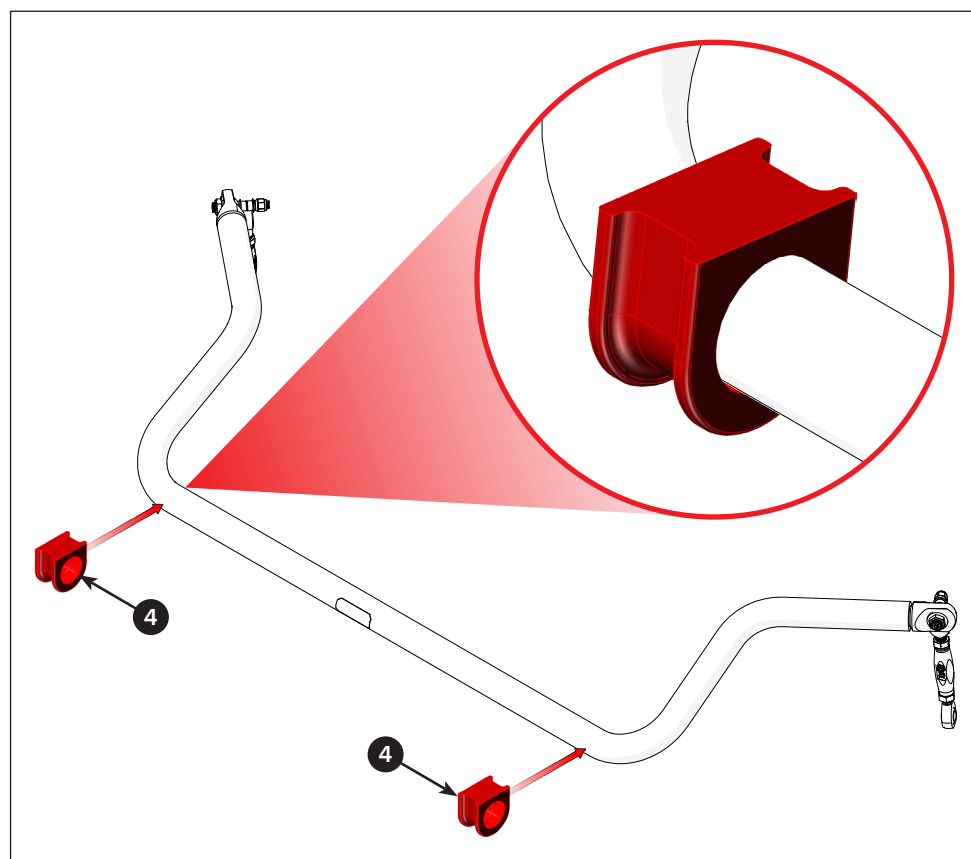


6

First, apply a thin layer of lithium-based grease to the inside of the sway bar bushings (4).

Now, put the sway bar bushings (4) onto the sway bar.

Note: The bushings have a split on one side to assist with installation.



7

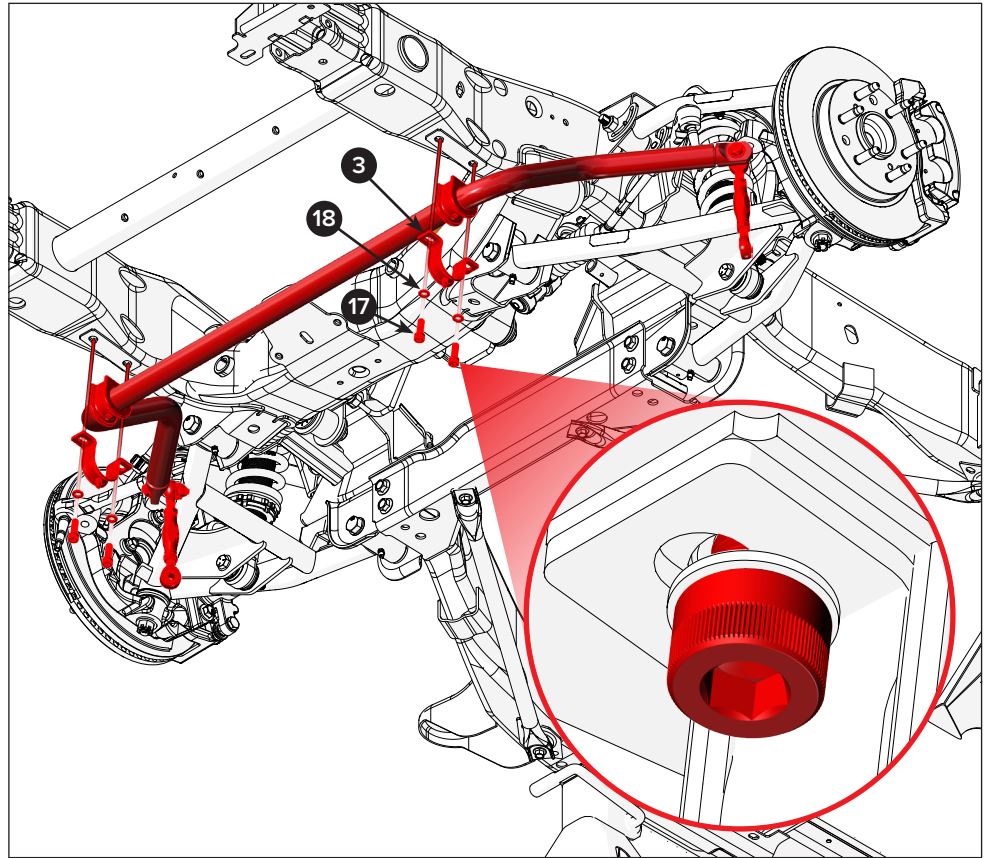
First, press one sway bar mount bracket (3) onto each bushing.

Next, lift the sway bar assembly and position it under the frame. Make sure that the mount brackets align with the threaded sway bar plates on the frame.

Take two flat washers (18) and place them onto two cap head socket screws (17). Insert the screws through the holes in the sway bar mount.

Torque the socket head cap screws to 35 lb-ft.

Repeat the assembly procedure for the second sway bar mount.

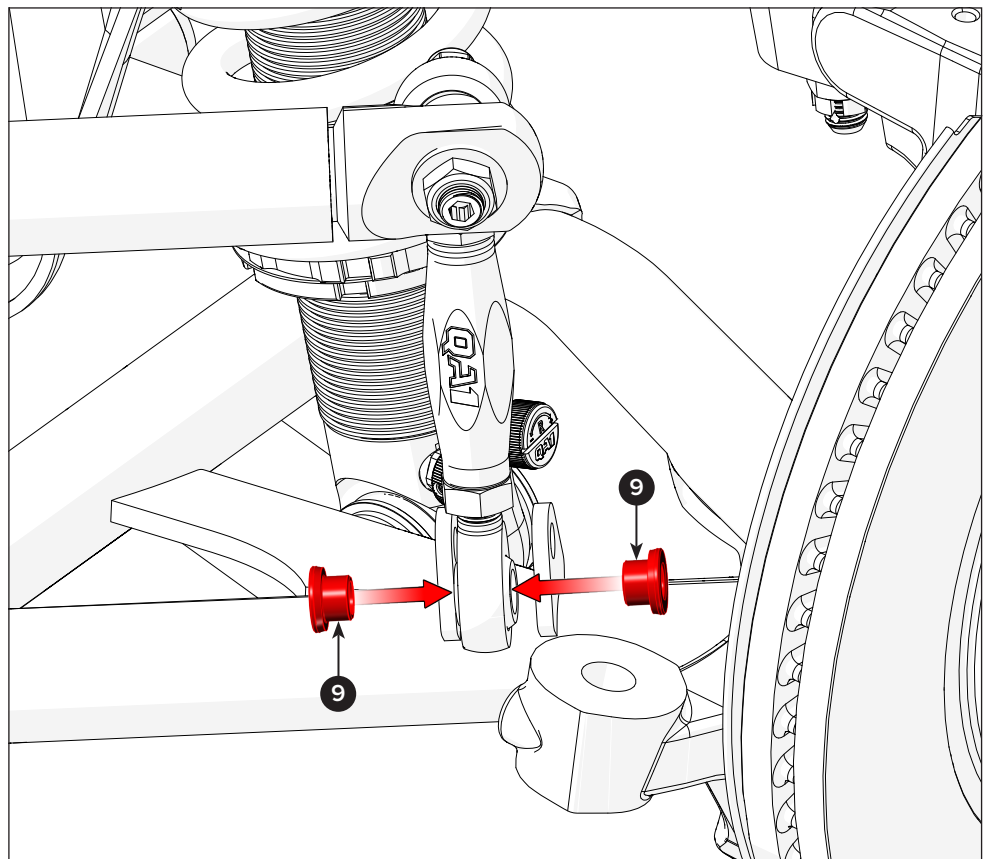


Installer's Note: For visual clarity, the steering rack's tie rod end is not shown, and does not need to be removed to install the sway bar.

8

Put one stepped spacer (9) on each side of the bottom rod end as shown.

Then push the rod end with spacers into the sway bar mount bracket on the lower control arm.

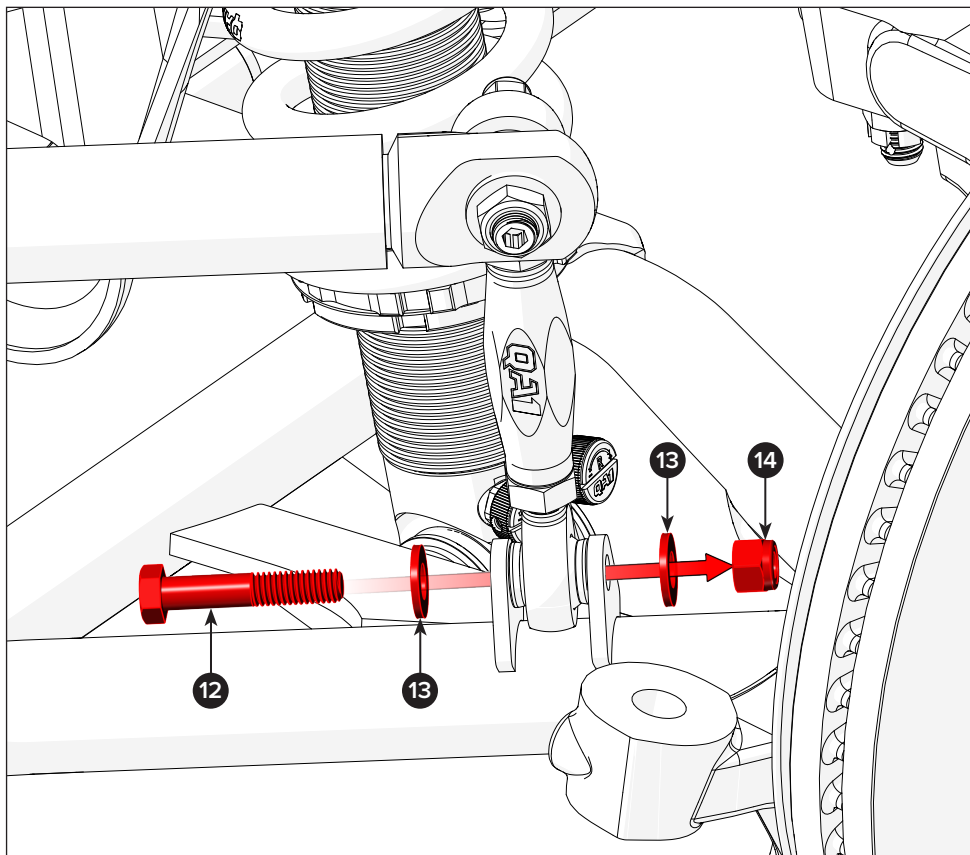


9

Attach the sway bar end link to the lower control arm with a bolt (12), two flat washers (13), and a Nylock nut (14).

Leave the nut loose to allow for final adjustment at the end of the installation.

Note: If it is difficult to attach both end links, adjust the end links that were left loose in step 3.

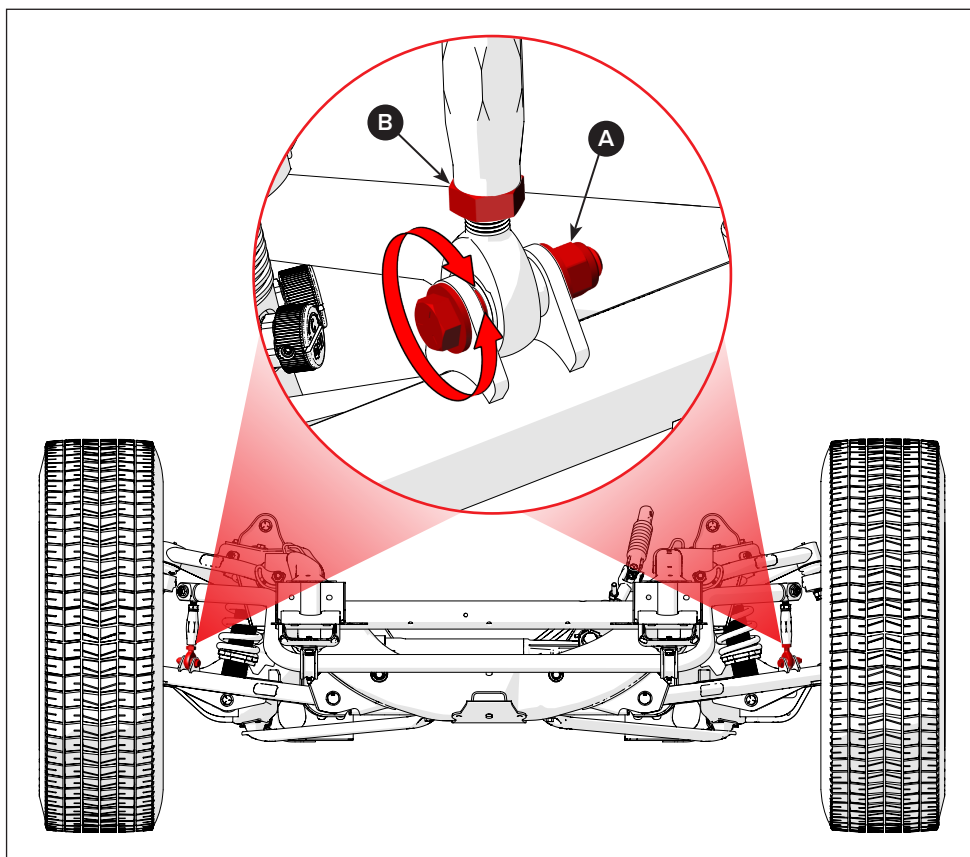
**10**

Once the installation is complete and the vehicle is on level ground with its tires at ride height, it is necessary to adjust the end links with the loose jam nuts.

Note: This adjustment check is to make sure that there is no side-to-side load on the suspension caused by the sway bar.

To make these adjustments, first make sure that the lower end link-to-LCA bolts (A) can be turned easily by hand and are not under any load from the sway bar.

After all side-to-side sway bar load is removed, torque the lower link bolts (A) to 30 lb-ft and the end link jam nuts (B) to 30 lb-ft.



DISCLAIMER / WARRANTY

QA1 warrants the products to be free from defects in material and workmanship for one year from the date of sale to the original purchaser. QA1 makes no other warranty of any kind, expressed or implied.

QA1 shall have no obligation under the preceding warranty where the defect results from improper or abnormal use, your negligence, vehicle accident, inappropriate or incorrect installation or maintenance, nor when the product has been repaired or altered in any way. QA1's liability in the case of defective products subject to the preceding warranty shall be limited to the repair or replacement of the defective products at QA1's option.

The user understands and recognizes that racing parts, specialized street rod equipment, and all parts and services sold by QA1 are exposed to many varied conditions due to the manner in which they are installed and used. It is the user's responsibility to determine the proper use or application of QA1 products.

QA1 shall bear no liability for any loss, damage, or injury, either to a person or to property, resulting from the installation, direct or indirect use of any QA1 products, or inability by the buyer to determine proper use or application of QA1 products. With the exception of the limited liability warranty set forth above, QA1 shall not be liable for any claims, demands, injuries, damages, actions, or causes of action to the buyer arising out of or connected with using any QA1 products.

Motorsports are inherently risky; therefore, no representation or warranty is made as to the product's ability to protect the user from injury or death. The user is fully aware and assumes that risk.



