



DON'T FORGET

These instructions can be found in color and expandable at QA1.net

Technical Support Line: (952) 985-5675 Email: sales@QA1.net

INSTALLATION INSTRUCTIONS

QA1 MOD™ Series Shock Rebuild Kit - Exploded View

TOOLS AND SUPPLIES REQUIRED

- Allen Wrench Set
- Vacuum Pump
- -3AN Fitting Adapter for vac hose
- Torque Wrench
- Spanner Wrench

Note:

Vacuum pump is required to successfully fill and bleed shocks upon completion of rebuild.

1. Count all shock settings back to the full soft position. Record settings so that shock can be set back to customer settings.
2. Release nitrogen charge and remove 9mm Schrader valve.
3. Remove 5/32" banjo bolt from reservoir.
4. Remove qty 2 - 7/64" screws from reservoir mount and discard o-ring (7). Clean mating surfaces. **(Figure 1)**
5. Using a spare reservoir mount (p/n 9039-272) in a vice, thread banjo bolt into reservoir cap and use spanner wrench to remove a cap. Either cap may break loose, this is ok. **(Figure 2)**
6. Remove floating piston and apply grease to x-ring (#8) before replacing. Replace reservoir cap o-ring (#9) and reinstall cap.
7. Replace (qty 2) banjo bolt o-rings (#10) and reservoir mount o-ring (#7). Reinstall reservoir mount and reservoir.
8. Flip shock in vice and remove closure nut/gland assembly (#1).
9. Loosen 3/4" jam nut on the piston rod and remove loop.
10. Using a shock bullet, remove and replace gland assembly (#1). **(Figure 3)**
11. Reinstall piston rod onto loop and tighten 3/4" jam nut.
12. Remove and replace piston band (#3) and piston band o-ring (#2). **(Figure 3)**
13. Remove compression tube from shock body and replace o-ring (#4). **(Figure 3)**
14. Reinstall compression tube followed by piston rod assembly.



Figure 1



Figure 2

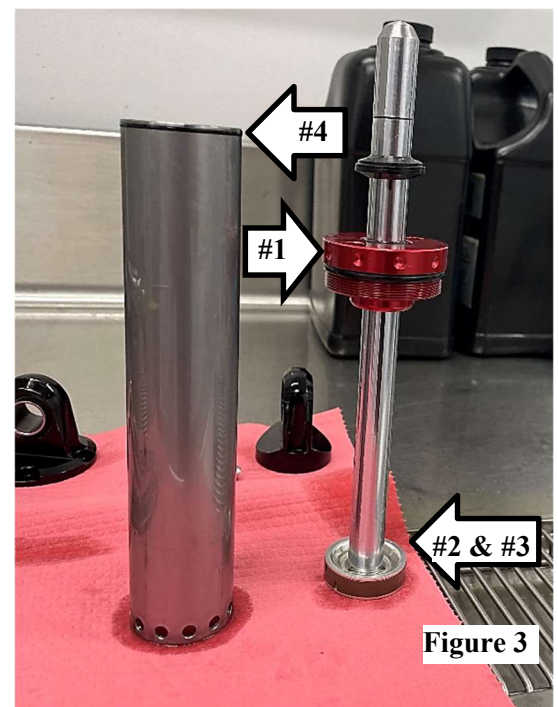
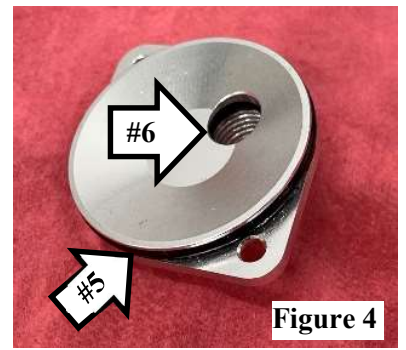


Figure 3

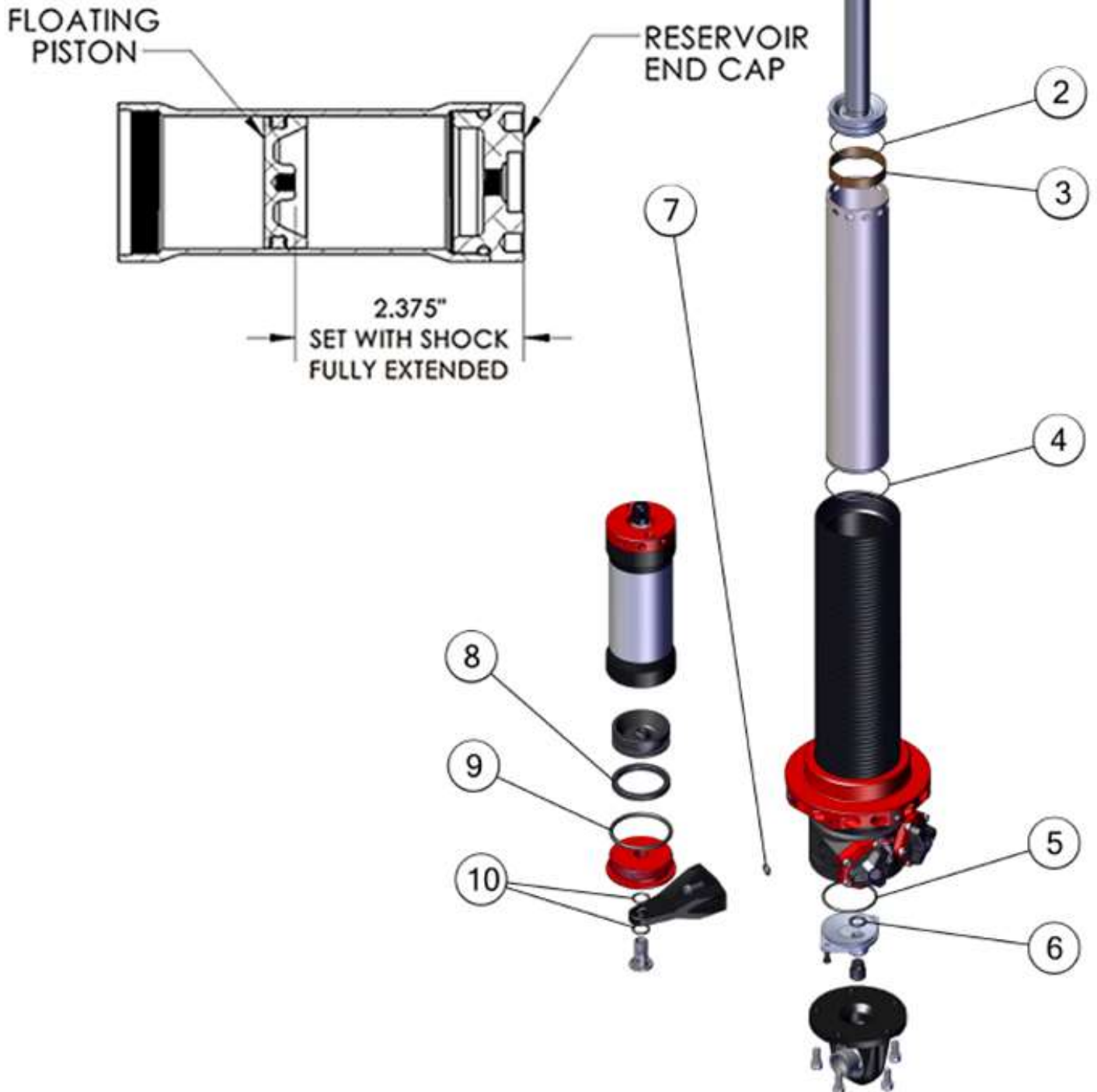
15. Flip shock over and remove (qty 5) 9/64" base loop screws.
16. Remove 3/16" fill port screw and (qty 2) .050" screws from fill port plate.
17. Remove fill port plate and replace o-ring (#5) and screw o-ring (#6). **(Figure 4)**
18. Reinstall fill port plate and (qty 2) .050" screws. **(Figure 5)**
19. At this point, shock is ready to begin the fill and bleed process. Both the Schrader valve and fill port screw should NOT be installed for this process.



See video for fill & bleed process



BOM ID	Item	Description	Qty
1	9054-355	GLAND ASSEMBLY	1
2	9044-188	PISTON BAND O-RING	1
3	9042-126	PISTON BAND	1
4	9044-188	COMP TUBE O-RING	1
5	9044-216	FILL CAP O-RING	1
6	9044-223	FILL PORT O-RING	1
7	9044-214	RESERVOIR MOUNT O-RING	1
8	9044-211	FLOATING PISTON X-RING	1
9	9044-217	RESERVOIR CAP O-RING	1
10	9044-215	BANJO BOLT O-RING	2





Technical Support Line: (952) 985-5675 Email: sales@QA1.net

READ ALL INSTRUCTIONS CAREFULLY AND THOROUGHLY PRIOR TO STARTING INSTALLATION. PRODUCTS THAT HAVE BEEN INSTALLED ARE NOT ELIGIBLE FOR RETURN. USE THE PROPER JACKING LOCATIONS. DEATH OR SERIOUS INJURY CAN RESULT IF INSTRUCTIONS ARE NOT CORRECTLY FOLLOWED. A GOOD CHASSIS MANUAL, AVAILABLE AT YOUR LOCAL PARTS STORE, MAY ALSO AID IN YOUR INSTALLATION.

• DISCLAIMER / WARRANTY •

QA1 WARRANTS THAT THE PRODUCTS WILL BE FREE FROM DEFECTS IN MATERIAL AND WORKMANSHIP FOR ONE YEAR FROM DATE OF SALE TO THE ORIGINAL PURCHASER. QA1 MAKES NO OTHER WARRANTY OF ANY KIND, EXPRESSED OR IMPLIED. QA1 SHALL HAVE NO OBLIGATION UNDER THE FOREGOING WARRANTY WHERE THE DEFECT IS THE RESULT OF IMPROPER OR ABNORMAL USE, YOUR NEGLIGENCE, VEHICLE ACCIDENT, IMPROPER OR INCORRECT INSTALLATION OR MAINTENANCE, NOR WHEN THE PRODUCT HAS BEEN REPAIRED OR ALTERED IN ANY WAY. QA1'S LIABILITY IN THE CASE OF DEFECTIVE PRODUCTS SUBJECT TO THE FOREGOING WARRANTY SHALL BE LIMITED TO THE REPAIR OR REPLACEMENT, AT QA1'S OPTION, OF THE DEFECTIVE PRODUCTS.

THE USER UNDERSTANDS AND RECOGNIZES THAT RACING PARTS, SPECIALIZED STREET ROD EQUIPMENT, AND ALL PARTS AND SERVICES SOLD BY QA1 ARE EXPOSED TO MANY AND VARIED CONDITIONS DUE TO THE MANNER IN WHICH THEY ARE INSTALLED AND USED. QA1 SHALL BEAR NO LIABILITY FOR ANY LOSS, DAMAGE OR INJURY, EITHER TO A PERSON OR TO PROPERTY, RESULTING FROM THE INSTALLATION, DIRECT OR INDIRECT USE OF ANY QA1 PRODUCTS OR INABILITY BY THE BUYER TO DETERMINE PROPER USE OR APPLICATION OF QA1 PRODUCTS. WITH THE EXCEPTION OF THE LIMITED LIABILITY WARRANTY SET FORTH ABOVE, QA1 SHALL NOT BE LIABLE FOR ANY CLAIMS, DEMANDS, INJURIES, DAMAGES, ACTIONS, OR CAUSES OF ACTION WHATSOEVER TO BUYER ARISING OUT OF OR CONNECTED WITH THE USE OF ANY QA1 PRODUCTS. MOTORSPORTS ARE DANGEROUS; AS SUCH, NO WARRANTY OR REPRESENTATION IS MADE AS TO THE PRODUCT'S ABILITY TO PROTECT THE USER FROM INJURY OR DEATH. THE USER ASSUMES THAT RISK!

DEDICATED TECH SUPPORT

QA1 is dedicated to providing quality support and instructions. We employ passionate racers and car enthusiasts that know our products and the industry to better serve you.

CHECK US OUT ON YOUTUBE!



- Frequently Asked Questions
- Quick Tips
- Install Information
- Tuning and Repair Guides
- Other Technical Information



- [linkedin.com/company/qa1](https://www.linkedin.com/company/qa1)
- [instagram.com/qa1motorsports](https://www.instagram.com/qa1motorsports)
- [facebook.com/qa1motorsports](https://www.facebook.com/qa1motorsports)

www.qa1.net/tech

[youtube.com/qa1tech](https://www.youtube.com/qa1tech)