



These instructions can be found in color and expandable at QA1.net

Technical Support Line: (952) 985-5675 Email: sales@QA1.net

INSTALLATION INSTRUCTIONS
C1500 SWAY BAR END LINK KIT
P/N 1681-117

TOOLS AND SUPPLIES REQUIRED

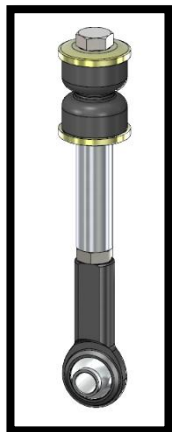
- Floor Jack
- Jack Stands
- Wrench Set
- Socket Set

PRE-INSTALLATION NOTES-

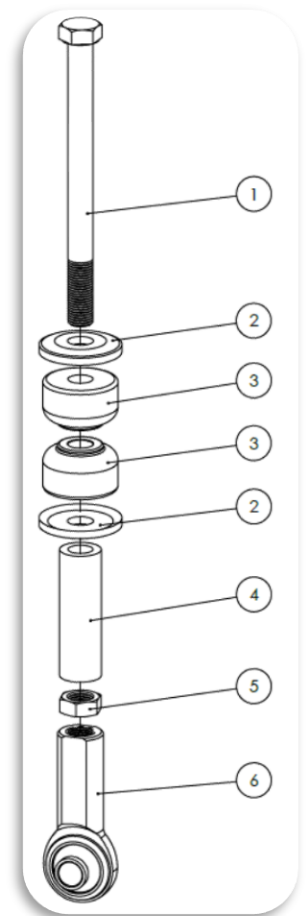
This end link kit is designed to adapt the C1500 factory front sway bar to the QA1 front suspension system.

INSTALLATION-

1. Remove the factory end links from the sway bar.
2. Install the sway bar to the truck using the factory frame mounting brackets.
3. Install one bushing washer (#2) onto the 4.5" long bolt (#1) with the cup of the washer facing away from the bolt head.
4. Slide one bushing (#3) with the flat side facing the bolt head.
5. Put a small amount of marine grease on the top and bottom of the sway bar end link hole.
6. Insert the bolt through the top side of the sway bar.
7. Slide a bushing (#3) onto the bolt with the flat side facing away from the bolt head.
8. Slide the remaining bushing washer (#2) onto the bolt with the cup facing the bolt head.
9. Slide the 2" sleeve (#4) onto the bolt followed by the nut (#5)
10. Tighten the nut to compress the bushings against the sway bar. Compress the bushings until they are the same diameter as the bushing washers. Compressing the bushings further will damage them.
11. Thread the rod end onto the end of the bolt until it bottoms out on the jam nut. Torque to 26 lb. ft.
12. With the vehicles suspension compressed, install the end link to the lower control arm using the provided 3/8" x 2" bolt, two washers per connection, and nylock nut. (Rotation of the end link using the bolt head may be necessary to line the rod end up with the mouting tabs.) Torque to 31 lb. ft.



BALLOON #	ITEM #	DESCRIPTION	QTY.
1	9012-236	BOLT, HEX 3/8-24 X 4.5"	1
2	9005-270	WASHER, SWAY BAR BUSHING	2
3	9032-349	BUSHING, SWAY BAR END LINK	2
4	9033-371	SLEEVE, .38" ID X .625" OD X 2"	1
5	JNR6S	JAM NUT, STEEL 3/8-24 RH	1
6	PCYFR6T	ROD END (PC) 2-PC ALLOY HT	1





READ ALL INSTRUCTIONS CAREFULLY AND THOROUGHLY PRIOR TO STARTING INSTALLATION. PRODUCTS THAT HAVE BEEN INSTALLED ARE NOT ELIGIBLE FOR RETURN. USE THE PROPER JACKING LOCATIONS. DEATH OR SERIOUS INJURY CAN RESULT IF INSTRUCTIONS ARE NOT CORRECTLY FOLLOWED. A GOOD CHASSIS MANUAL, AVAILABLE AT YOUR LOCAL PARTS STORE, MAY ALSO AID IN YOUR INSTALLATION.

• **DISCLAIMER / WARRANTY** •

QA1 WARRANTS THAT THE PRODUCTS WILL BE FREE FROM DEFECTS IN MATERIAL AND WORKMANSHIP FOR ONE YEAR FROM DATE OF SALE TO THE ORIGINAL PURCHASER. QA1 MAKES NO OTHER WARRANTY OF ANY KIND, EXPRESSED OR IMPLIED. QA1 SHALL HAVE NO OBLIGATION UNDER THE FOREGOING WARRANTY WHERE THE DEFECT IS THE RESULT OF IMPROPER OR ABNORMAL USE, YOUR NEGLIGENCE, VEHICLE ACCIDENT, IMPROPER OR INCORRECT INSTALLATION OR MAINTENANCE, NOR WHEN THE PRODUCT HAS BEEN REPAIRED OR ALTERED IN ANY WAY. QA1'S LIABILITY IN THE CASE OF DEFECTIVE PRODUCTS SUBJECT TO THE FOREGOING WARRANTY SHALL BE LIMITED TO THE REPAIR OR REPLACEMENT, AT QA1'S OPTION, OF THE DEFECTIVE PRODUCTS.

THE USER UNDERSTANDS AND RECOGNIZES THAT RACING PARTS, SPECIALIZED STREET ROD EQUIPMENT, AND ALL PARTS AND SERVICES SOLD BY QA1 ARE EXPOSED TO MANY AND VARIED CONDITIONS DUE TO THE MANNER IN WHICH THEY ARE INSTALLED AND USED. QA1 SHALL BEAR NO LIABILITY FOR ANY LOSS, DAMAGE OR INJURY, EITHER TO A PERSON OR TO PROPERTY, RESULTING FROM THE INSTALLATION, DIRECT OR INDIRECT USE OF ANY QA1 PRODUCTS OR INABILITY BY THE BUYER TO DETERMINE PROPER USE OR APPLICATION OF QA1 PRODUCTS. WITH THE EXCEPTION OF THE LIMITED LIABILITY WARRANTY SET FORTH ABOVE, QA1 SHALL NOT BE LIABLE FOR ANY CLAIMS, DEMANDS, INJURIES, DAMAGES, ACTIONS, OR CAUSES OF ACTION WHATSOEVER TO BUYER ARISING OUT OF OR CONNECTED WITH THE USE OF ANY QA1 PRODUCTS. MOTORSPORTS ARE DANGEROUS; AS SUCH, NO WARRANTY OR REPRESENTATION IS MADE AS TO THE PRODUCT'S ABILITY TO PROTECT THE USER FROM INJURY OR DEATH. THE USER ASSUMES THAT RISK!

Dedicated Technical Support Team

QA1 is dedicated to providing quality support and instructions. We employ passionate racers and car enthusiasts that know our products and the industry to better serve you.

Check out our tech videos at www.YouTube.com/QA1Tech for:

- Frequently Asked Questions
- Quick Tips
- Install Information
- Tuning and Repair Guides
- Other technical information

Or call to speak with one of our experts: 1.800.721.7761

*Our technical support and order lines are open Monday - Friday, 8 am to 5 pm CST.



[Facebook.com/QA1Motorsports](https://www.facebook.com/QA1Motorsports)



[Twitter.com/QA1Motorsports](https://twitter.com/QA1Motorsports)



[Instagram.com/QA1Motorsports](https://www.instagram.com/QA1Motorsports)



www.QA1.net/Tech