

Detroit Speed
Clutch Master Cylinder Bracket
1967-69 Camaro/Firebird & 1970-81 Camaro/Firebird
P/N: 070424DS & 070430DS

Detroit Speed's Clutch Master Cylinder Bracket is designed to mount a GM hydraulic clutch master cylinder to the firewall of a 1967-81 GM F-Body or 1968-74 X-Body. This bracket will help ensure optimum master cylinder positioning when using a factory GM-style clutch master, ensuring proper clutch actuation and precise pedal feel.

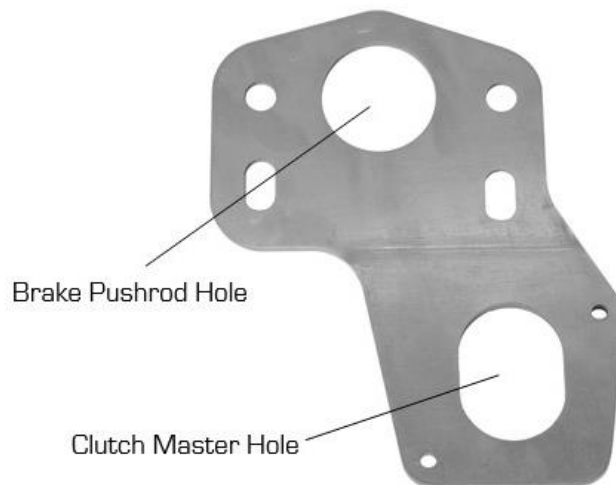


P/N: 070424DS



P/N: 070430DS

NOTE: This bracket is designed to be used with a GM Master Cylinder P/N: 12570277. This master cylinder includes a factory-style pushrod that can be modified to work with first- or second-generation F-bodies. Remove the pushrod from the master cylinder and separate the two halves at the factory crimp using a die grinder, then remove 2" of material (first-gen) or 1/2" of material (second-gen) from the hollow end. Ensure that the final overall length from the dust cap to the bolt hole centerline is 4 3/8" (first-gen) or 5 7/8" (second-gen), then weld the two halves together and reinstall the pushrod.



Installation Instructions:

1. Disconnect the battery power by removing the negative battery lead from the battery. Remove the brake master cylinder and booster and factory clutch linkage.
2. Locate the bracket using the factory brake booster mounting hardware. Using the brake booster or brake master cylinder opening in the clutch master cylinder bracket, match the opening in the firewall to the bracket (Figure 1 & 2).



Figure 1 - Locate Bracket



Figure 2 - Match Firewall to Bracket

3. Using a scribe and the clutch master cylinder bracket as a guide, mark the area of the firewall that will need to be trimmed to match the opening in the clutch master cylinder bracket (Figure 3).



Figure 3 - Scribe Trim Line

4. Remove the clutch master cylinder bracket from the firewall and trim the marked area of the firewall (Figure 4).



Figure 4 - Trim Firewall

5. Prep the firewall in order to weld the clutch master cylinder bracket to the firewall (Figure 5). Install the clutch master cylinder bracket back onto the firewall using the factory brake booster mounting hardware and tighten (Figure 6).



Figure 5 - Prep Firewall for Welding



Figure 6 - Install Bracket

6. Weld the clutch master cylinder bracket to the firewall (Figure 7).



Figure 7 - Weld Bracket to Firewall



7. Create a paper template to fabricate a closeout piece to go between the bottom open area of the clutch master cylinder bracket and the firewall (Figure 8).



Figure 8 - Paper Template Closeout

- Fabricate the closeout using sheet metal. Verify that it fits to the firewall and the clutch master cylinder bracket (Figure 9).



Figure 9 – Fabricate Closeout

- Weld the closeout to the firewall to create a weather tight seal around the clutch master cylinder. Grind smooth for a clean finish (Figure 10).

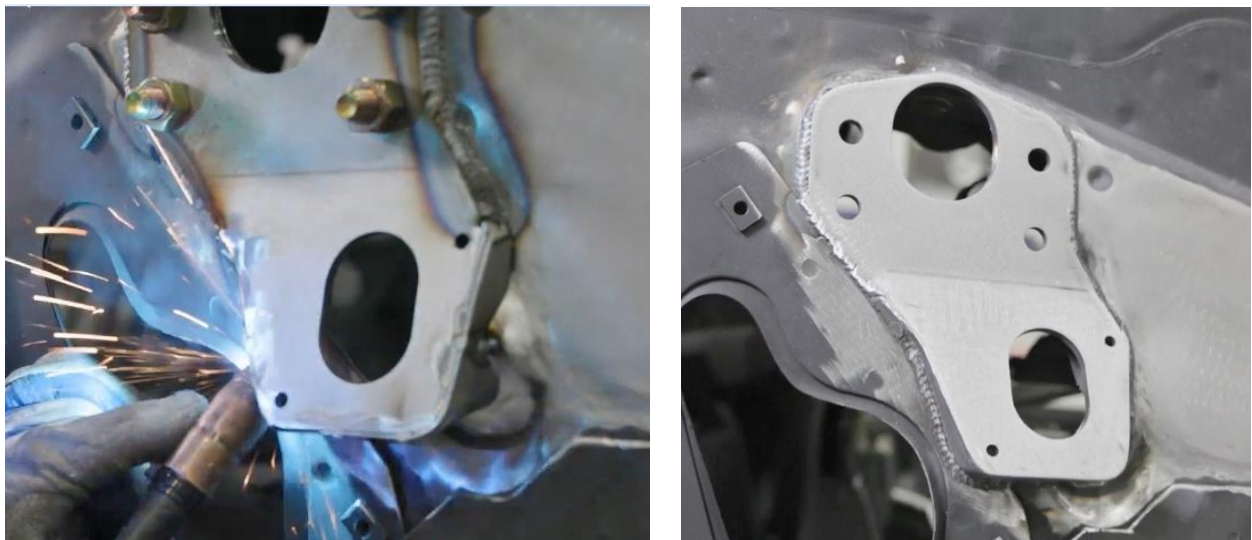


Figure 10 – Weld Closeout

If you have any questions before or during the installation of this product, please contact Detroit Speed at tech@detroitsspeed.com or 704.662.3272

Legal Disclaimer: *Detroit Speed is not liable for personal, property, legal, or financial damages from the use or misuse of any product we sell. The purchaser is solely responsible for the safety and performance of these products. No warranty is expressed or implied.*