

DISCOVER
ITS UNIQUE
FEATURES

05



SHADE
TECHNOLOGY
DOUBLE CONCISTENCY
SURFACE GLOSS
EFFECT SHADES

inspir 
direct

What about a composite system combining simplicity,
predictability and high esthetics?
inspiro® actually presents an unparalleled blend of features to serve
and please all dentists and direct bonding lovers.

Let's discover them together!

FEATURE #5:

Effect shades for optimal esthetics

The inspiro system offers 5 effect shades which allow special color effects to be created for teeth showing a polychromatic shade configuration. The line of effect shades has been largely simplified in comparison with former generations of similar color enhancement kits.



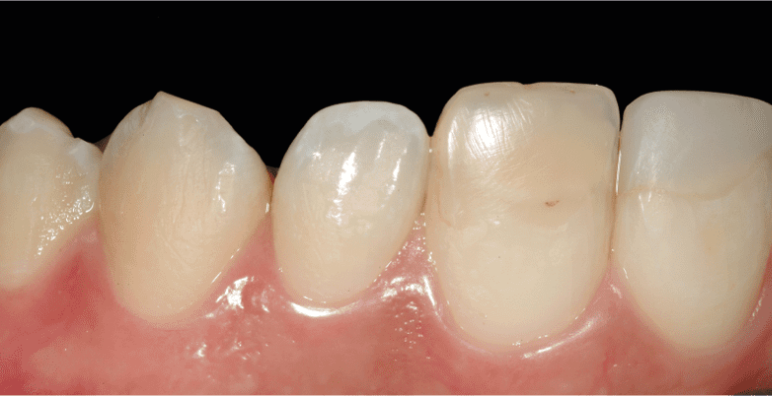
inspiro effects shade line includes the following color modifiers: Azur (A) to emulate intensive opalescence incisal halo, Chroma (C) to increase locally chroma, Ice (I) to simulate enamel opacities and locally increase restoration value, Opaque (O) to be mixed with chroma to create customized opaquers and Fissure (F) to characterize posterior occlusal restoration.





Clinical example

The use of inspiro effect shades is illustrated with the esthetic treatment of a young patient who was previously treated for dysplasia and hypoplasia of her both center incisors (Molar Incisor Hypomineralization (MIH) syndrome). Note the aging and discoloration of existing composite build-ups and the relatively dark natural tooth color in such a young patient (18Y).



It was then decided to bleach teeth prior to replacing the existing composite restoration so that the patient could benefit from a more comprehensive smile esthetics enhancement.

The post "Home Bleaching" views reveal a markedly improved smile shade and brightness. The inspiro dedicated shade guide allowed an appropriate dentin (lower left image) and enamel combination (lower right image) to fit the new tooth shade. Being able to pre-visualize the future restoration shade and its match with natural dental structure is paramount to a successful esthetic outcome. Note the marked opalescence halo and white enamel opacities at the incisal edges.



The core of restorations was built-up with a combination of dentin (Body i1) and enamel (Skin Bleach). The effect shades (Azur and Ice) served to emulate the stronger opalescence halo and fluorosis of natural incisal edges (note that effect shades have to be applied between dentin and enamel layers).





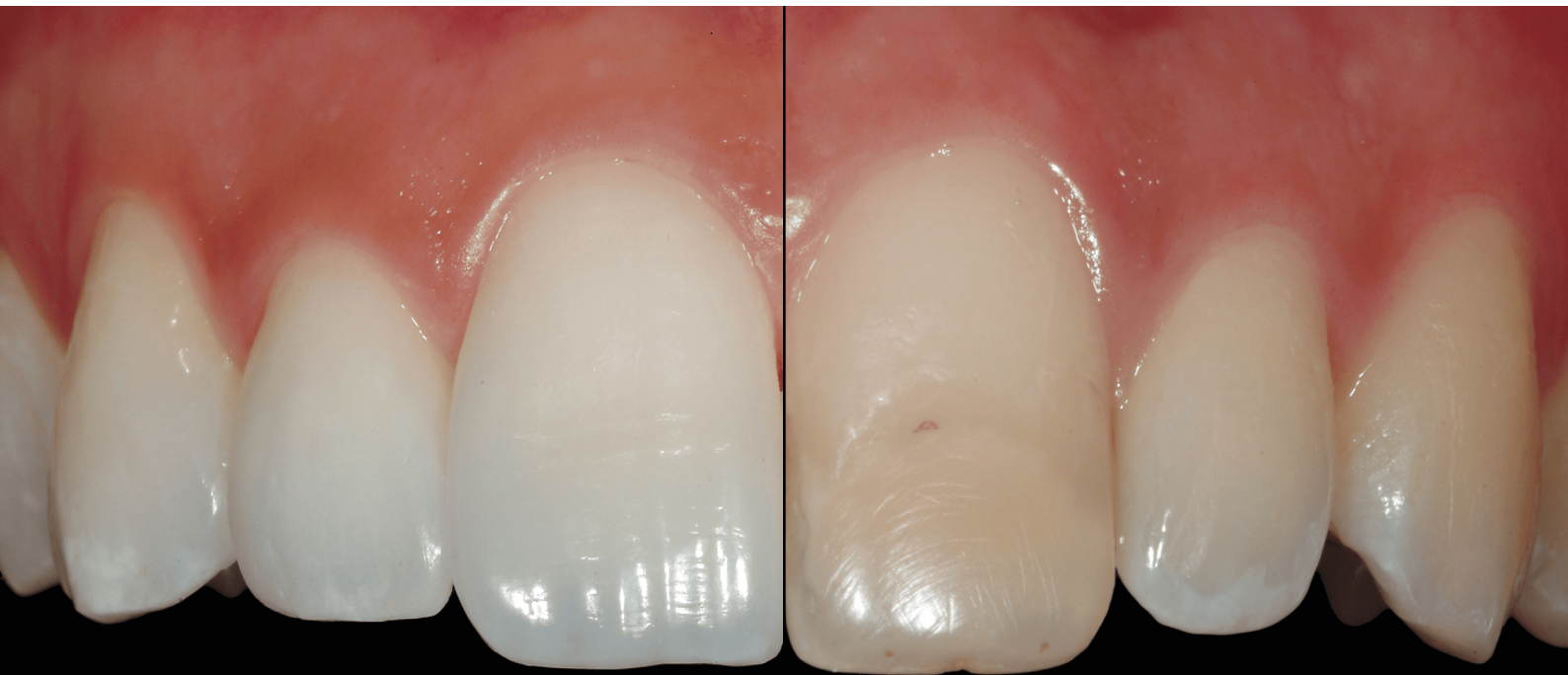
Azur & Ice





The inspiro system provides the desired components to achieve the highest level of aesthetics and ideal integration of the material with surrounding tissues, whatever their original chromatic configuration.





*Post - versus Pre-
treatment*



Clinical case by courtesy of Dr. Didier Dietschi, Switzerland

Do not hesitate to visit our webpage to learn more about all the product features and advantages the inspiro® system can bring to your practice and dentistry.

- www.edelweissdr.com -

