

DISCOVER
ITS UNIQUE
FEATURES

05

SWISS
knowhow in color technology

SHADE
TECHNOLOGY
DOUBLE CONSISTENCY
SURFACE GLOSS
EFFECT SHADES

inspir 
direct

What about a composite system combining simplicity,
predictability and high esthetics?
inspiro® actually presents an unparalleled blend of features to serve
and please all dentists and direct bonding lovers.

Let's discover them together!

FEATURE #4:

Surface gloss for durable esthetics

inspiro's special technology does not only ensure optimal physico-chemical properties in both anterior and posterior teeth (universal composite system) but it also makes polishing truly easy with long-lasting and stable surface gloss. It will be your material of choice to create restorations of the highest esthetic quality, even competing with indirect ceramic ones. And last but not least, this does not happen at the expense of clinical ease and reliability, on the contrary... the excellence lies here in the simplicity!





Clinical example

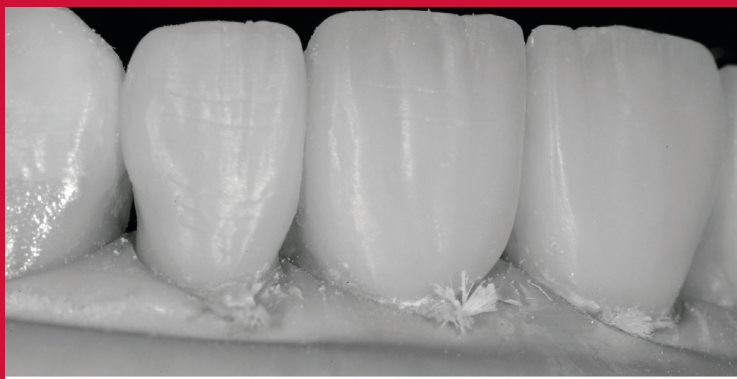
To illustrate inspiro's outstanding gloss and shine stability, a veneer case is presented. This medium age patient was hoping for the replacement of her 10Y old restorations, exhibiting discoloration and wear and opted again for resin composite. Another disturbing element was the retroclination of her upper 6 front teeth. The teeth to be treated were otherwise healthy, although some previous periodontal disease had slightly reduced papilla volumes.



To start with, shade selection was performed using the special, dedicated shade guide to match as close as possible the patient's lower front teeth. A silicone index was also prepared to control tooth dimensions and display. Then, no additional preparation had to be performed following old restorations removal; new veneers could therefore be placed using virtually a no-prep approach.

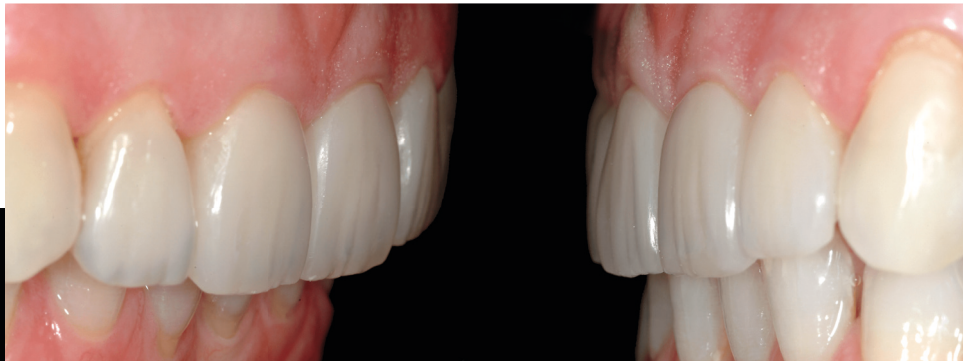
Veneers were made of only 3 shades, the dentin (Body Bi2) and the enamel (Skin White) masses, following strictly the Inspiro bi-laminar approach (Natural Layering Concept). Note that the use of dentin on incisors was made necessary to correct their retroclination. A single effect shade (Azur), applied before the final enamel layer, completed the new chromatic composition of these restorations, underlining opalescence effects.







The treatment outcome shows the new smile configuration with corrected incisor's axis, brighter teeth and much more natural chromatic composition. Note the micro-morphology which enhanced light reflection and nature like appearance. The smile line and tooth display were otherwise maintained to their previous levels which were considered satisfactory.





Post operative views



3Y



7Y



post-treatment

Although micro-texture was slightly reduced by the over-active brushing of this patient, surface quality remained highly satisfactory without any professional intervention (i.e.: repolishing or resurfacing).

Do not hesitate to visit our webpage to learn more about all the product features and advantages the inspiro® system can bring to your practice and dentistry.

- www.edelweissdr.com -

