

DISCOVER
ITS UNIQUE
FEATURES

05

SWISS
knowhow in color technology

SHADE
TECHNOLOGY
DOUBLE CONCISTENCY
SURFACE GLOSS
EFFECT SHADES

inspir 
direct

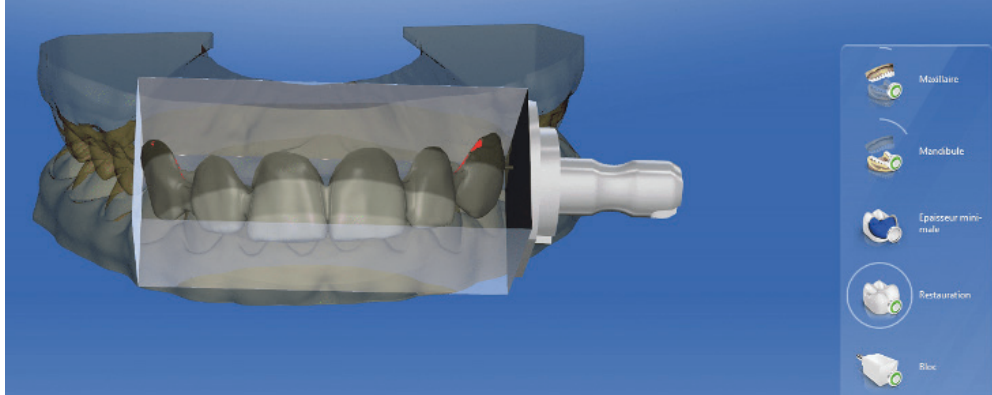
What about a composite system combining simplicity,
predictability and high esthetics?
inspiro® actually presents an unparalleled blend of features to serve
and please all dentists and direct bonding lovers.

Let's discover them together!

FEATURE #3: *Double consistency for extended indications*

inspiro is the only composite system in the world having a coordinated line of restorative and flowable shades! This unique feature allows a simplification of clinical procedures in any situation where a double material consistency is indicated, such as class V restorations, minor form corrections or even the palatal build up of large or multiple anterior restorations.





This young patient presented an hypoplasia of upper front teeth and unaesthetic teeth forms. In order to evaluate and test the best smile line change, a CAD CAM mockup was produced. After approval from the patient, the mockup served to create a silicone index.



On the treatment day, shade selection was performed using the dedicated inspiro shade guide which allows a precise simulation and visualization of the future bi-laminated restorations. Dentin Bi1 and Enamel Skin Bleach were chosen for this case.







In this case, the flow enamel served to create the palatal shells in one single, convenient step. Having enamel and dentin flowable shades provides superior color integration in all relevant indications.

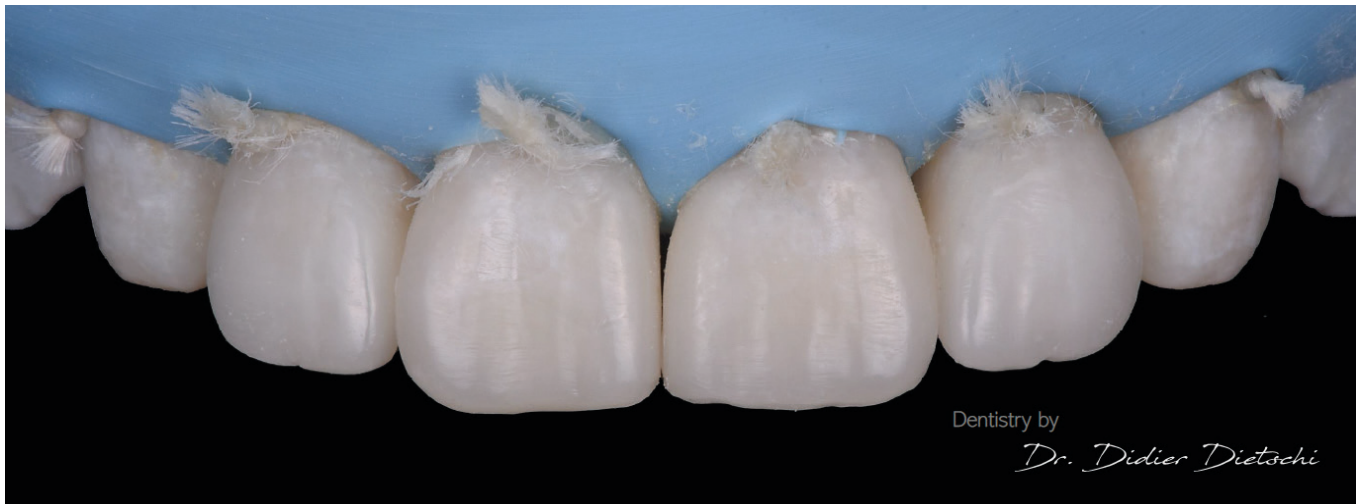




The dentin increments could be then placed directly on the palatal shells; the shells served here not only as support for dentin but also provided a reference to position dentin lobes in regard to the new incisal edge position, which is crucial to obtain an ideal esthetic result from both color and anatomical perspectives. The last steps was enamel application to complete proximal and facial contours.



Views of the 6 upper direct partial veneers post finishing and polishing, under rubber dam and following full rehydration, one week post-treatment.





inspiro

allowed the smile rehabilitation of this young patient to be achieved using a "no-prep" approach...

Do not hesitate to visit our webpage to learn more
about all the product features and advantages the
inspiro® system can bring to your practice and dentistry.

- www.edelweissdr.com -

