

DISCOVER
ITS UNIQUE
FEATURES

05

SWISS
knowhow in color technology

SHADE
TECHNOLOGY
DOUBLE CONCISTENCY
SURFACE GLOSS
EFFECT SHADES

10 µm

inspir 
direct

What about a composite system combining simplicity,
predictability and high esthetics?
inspiro® actually presents an unparalleled blend of features to serve
and please all dentists and direct bonding lovers.

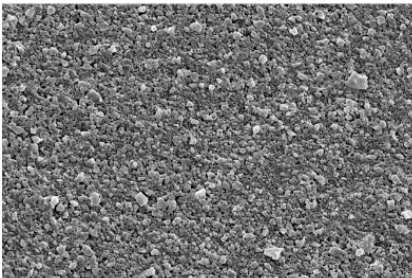
Let's discover them together!

FEATURE #2: *Improved Technology for superior results*

inspiro is a new type of nano-hybrid material with homogeneous distribution of nano-fillers in the material's matrix which created a new standard in composite technology. inspiro is then suitable for all anterior and posterior direct restorations, as well as indirect ones (inlays, onlays and overlays).

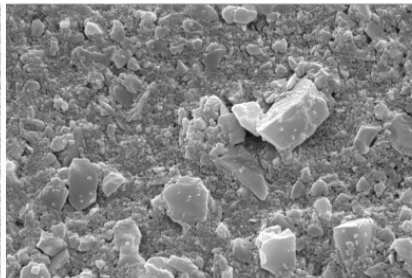
This new filler technology not only improves its polishing ability but also provides greater color and gloss stability.

Inspiro™ technology



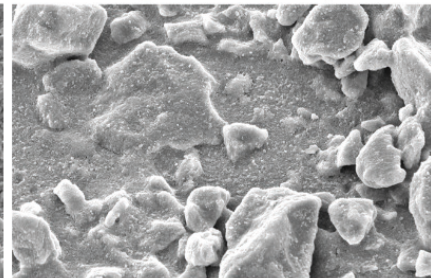
5'000x

Micro-hybrid



4'000x

Inhomogeneous nano-hybrid



600x



Bolton discrepancy which required the closure of diastemas and form corrections of both upper lateral incisor and a change of the mesio-distal diameter of the upper right canine to improve patient's smile symmetry.





Post-operative view



3y post-treatment

Clinical example



This young patient who renounced to an orthodontic treatment was in need of several esthetic restorations to improve her smile; due to her age (17), a direct approach was chosen.





inspiro was considered an optimal system to resolve this difficult case due to its reliability and outstanding color integration and stability.



Do not hesitate to visit our webpage to learn more about all the product features and advantages the inspiro® system can bring to your practice and dentistry.

- www.edelweissdr.com -

