

INSTRUCTIONS FOR USE for i-PLUG® and Filling and Removal (FR) Instrument

Items #D030-050 and #D030-017

i-PLUG® (Item #D030-050) is made of medical grade PTFE (Poly Tetra Fluoro Ethylene), which is a non-toxic and highly biocompatible material that is fully autoclavable by a dental steam autoclave device with a pre-vacuum technology. Autoclave Setting recommendation: 250 °F / 121 °C for 30 minutes.

It is a universal filler that is compatible with the abutments of both screw-retained and cement-retained crowns. The FR Instrument (#D030-017) is a patent-pending stainless steel hand instrument with special plugger and extractor ends to simplify the placement and removal of i-PLUG®.

1. Remove one piece of the i-PLUG® from the plastic container and autoclave it to prevent cross-contamination.
2. Insert i-PLUG® into the abutment hole and cut it to the desired length (Figure 1).
3. Press down firmly on the filler to seal the hole completely using the plugger end of the FR Instrument (Figure 2).
4. To remove i-PLUG®, insert the extractor end of the FR Instrument into bottom of the filler and slowly pull it out (Figures 3 and 4).
5. If first removal attempt is unsuccessful, forcefully compress the filler with the plugger end to make it denser prior to re-inserting the extractor (NOTE: always try to compress and remove i-PLUG® in one piece without shredding the PTFE material).

Figure 1



Figure 2

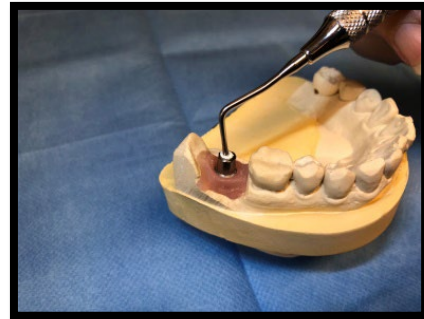


Figure 3

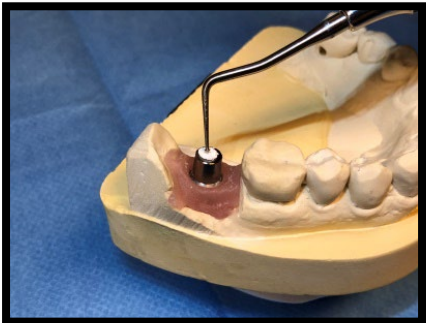


Figure 4

