

Instructions for Use - Safe-T-Point™ Safety Blood Collection Set Butterfly Type

INDICATIONS FOR USE

The Safe-T-Point™ Safety Blood Collection Set Butterfly Type is intended to be used for insertion into a patient's vascular system for blood collection, or short-term IV administration (up to 2 hours), by a healthcare professional. The unique protective safety shield feature reduces the risk of needle-stick injury.

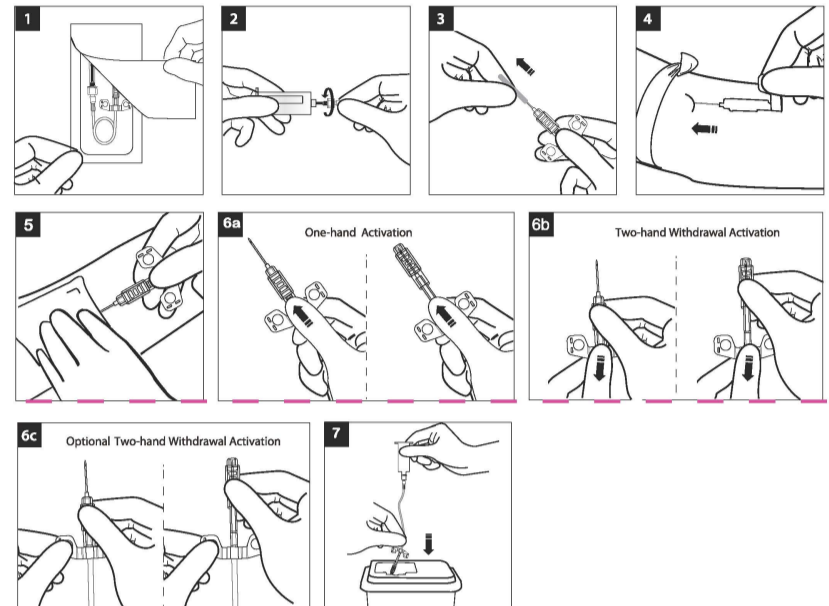
BLOOD COLLECTION

1. Break the blister package seal and remove the device.
2. Check to ensure all luer adapters are securely attached.
3. Remove needle cap.
4. Perform venipuncture by holding wings.
5. Withdraw the safety blood collection set by applying pressure to site using your fingers, and with the other hand, grasp the safety shield grip area with the thumb and index finger whilst grasping the tubing.

6a. One-hand Activation: Hold tubing and advance safety shield with thumb and index finger until a click is heard indicating the safety shield is locked in place over needle tip.

6b. Two-hand Withdrawal Activation: Hold safety shield with one hand, withdraw tubing with the other hand until a click is heard indicating the safety shield is locked in place over the needle tip.

6c. Optional Two-hand Withdrawal Activation: Hold one side of the wings with one hand, hold safety shield with the other hand and advance it until a click is heard indicating the safety shield is locked in place over needle tip. 7. Dispose of the device into an approved sharps container.

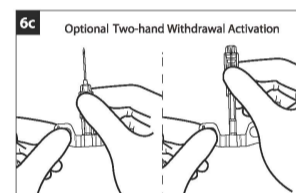


BLOOD COLLECTION - Using a Syringe

1. Remove luer adapter and attach syringe.

Follow **BLOOD COLLECTION** steps 3-7.

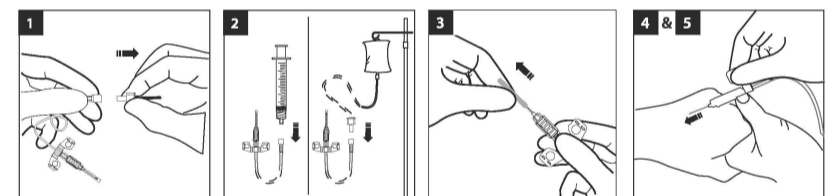
Note: Use the transfer device to transfer blood from the syringe to the evacuated tube.



SHORT TERM IV ADMINISTRATION (up to 2 hours)

1. Remove luer adapter.
2. Attach IV line or syringe to the female luer adapter.
3. Remove needle cap and prime set according to established protocol.
4. Perform venipuncture by holding wings.
5. Administer medication.

Note: This device is recommended to be changed according to the established protocols of the facility, however, not more than 2 hours. Follow **BLOOD COLLECTION** steps 3-7



Short Term IV Administration (up to 2 hours)

This device is for use in a health-care facility or a transport (ambulatory) environment by a health care professional.

WARNINGS

- Do not forcefully pull on the wings or perform any related action.
- Mishandling of the device may cause damage to the device.
- Do not forcefully release or destroy the safety shield mechanism after it has been activated.

CAUTIONS

- Due to the risk of blood seeping from the exposed tip, promptly dispose of the device pointing the needle bevel upward in an approved sharps container after activating the safety shield mechanism.
- While the safety shield mechanism is being activated, avoid the needle tip.
- Use precaution as blood or fluids may leak out of the device when removing the luer connector.
- Immediately use the device after breaking blister package seal.
- In the event the packaging is damaged, or the seal is broken, do not use the product.
- Store the device in a cool, dry environment away from direct sunlight, high heat, and high humidity.
- The device is for single use, DO NOT REUSE.

105 Solana Road- Suite B
Ponte Vedra Beach
FL 32092, USA
E: info@metiermedical.com
www.metiermedical.com

Local Law restricts this device for sale or use unless approved by a physician.