



Low-Wing Aircraft **Visualized Flight Maneuvers Manual** Fifth Edition



For Pilots in Training

Low-Wing Aircraft
**Visualized
Flight
Maneuvers
Manual** Fifth Edition

For Pilots in Training



AVIATION SUPPLIES & ACADEMICS, INC.
NEWCASTLE, WASHINGTON

Low-Wing Aircraft
Visualized Flight Maneuvers Manual
Fifth Edition

Aviation Supplies & Academics, Inc.
7005 132nd Place SE
Newcastle, Washington 98059
asa@asa2fly.com | 425-235-1500 | asa2fly.com

© 1996–2022 Aviation Supplies & Academics, Inc.

No part of this publication may be reproduced, stored in a retrieval system, or transmitted in any form or by any means, electronic, mechanical, photocopy, recording, or otherwise, without the prior written permission of the copyright holder. While every precaution has been taken in the preparation of this book, the publisher assumes no responsibility for damages resulting from the use of the information contained herein.

None of the material in this book supersedes any operational documents or procedures issued by the Federal Aviation Administration, aircraft and avionics manufacturers, flight schools, or the operators of aircraft.

ASA-VFM-LO-5

ISBN 978-1-64425-225-3

Additional format available:
eBook PDF ISBN 978-1-64425-226-0

Printed in the United States of America

2025 2024 2023 2022 9 8 7 6 5 4 3 2 1

Cover photo:
Piper Aircraft Inc., Piper Archer TX, Jim Barrett Photography

PREFACE

The purpose of this handbook is threefold:

1. To provide the student with a more thorough understanding of the basic parts of each flight maneuver, in order to better prepare them for each flight instruction period;
2. To provide a foundation for later formal training for private, commercial, or flight instructor candidates;
3. To create a safer and more competent pilot.

This book should be used as a supplement to the current FAA Certification Standards for the certificate being sought. For a full discussion of each maneuver, refer to the *Airplane Flying Handbook* (FAA-H-8083-3). Airplane manufacturer recommendations should be checked before beginning any maneuver.

Maneuvers required by the FAA Certification Standards for the Sport, Private, Commercial, and Flight Instructor certificates are illustrated in this book. The minimum requirements established in the FAA Certification Standards for each certificate accompany each maneuver. Flight Instructor applicants are required to meet the Commercial Pilot skill level. For those maneuvers that are Private Pilot-only, the Flight Instructor applicant is expected to perform the maneuvers more precisely than a Private Pilot applicant, as determined by the examiner.

Where it is appropriate, space has been provided for you to enter the tire pressures, tank capacities, airspeeds, power settings, etc. that apply to the airplane being flown.

Before practicing each maneuver, remember to complete the necessary preparations. Memory aid: **AAACT** (“act”)

- A**rea terrain appropriate for maneuvering, and emergency landing area available
- A**irspeed maneuvering speed (V_A) or as designated by practical test standards
- A**ltitude as designated by practical test standards
- C**learing turns clear area for traffic
- T**echnique as designated by FAA Certification Standards

The maneuvers are visual, and require you to keep your center of attention outside the aircraft. When practicing the maneuvers, use outside references to perform the maneuver, then cross-check by scanning the instruments inside the cockpit—look outside, peek inside.

CONTENTS

Aircraft Review.....	1
Airplane Familiarization	2
Preflight Operations.....	4
Starting Airplane.....	6
Before-Takeoff Check	6a
Taxiing	7
Normal Takeoff & Climb	8
Crosswind Takeoff & Climb	10
Soft-Field Takeoff & Climb	12
Short-Field Takeoff & Climb.....	14
Straight and Level Flight.....	16
Shallow & Medium Turns	17
Rectangular Course.....	18
S-Turns	20
Turns Around a Point.....	21
Eights-On-Pylons.....	22
Maneuvering During Slow Flight.....	24
Power-Off Stalls.....	25
Power-On Stalls.....	26
Accelerated Stalls.....	28
Crossed-Control Stalls.....	29
Elevator Trim Stalls	30
Secondary Stalls	31
Spins.....	32
Steep Spirals	34
Chandelles.....	36
Lazy Eights.....	38
Steep Turns	40
Go-Around Procedure	41
Traffic Pattern	42
Forward Slip.....	44
Normal Approach & Landing	45
Crosswind Approach & Landing	46
Soft-Field Approach & Landing.....	47
Short-Field Approach & Landing	48
Power-Off 180° Accuracy Approach & Landing.....	49

Emergency Descent	50
Emergency Approach & Landing.....	51
After-Landing Check.....	52
Energy Management Guide.....	53
Private Checklist.....	55
Sport Checklist	56
Commercial Checklist.....	57
Flight Instructor Checklist	58
Index.....	59

AIRCRAFT REVIEW

Aircraft Model and Type:

1. What is the normal climb-out speed? _____
2. What is the best rate-of-climb speed (V_Y)? _____
3. What is the best angle-of-climb speed (V_X)? _____
4. What is the maximum flaps-down speed (V_{FE})? _____
5. What is the maximum gear-down speed (V_{LE})? _____
6. What is the stall speed in a normal landing configuration (V_{S0})? _____
7. What is the clean (flaps and gear up) stall speed (V_{S1})? _____
8. What is the approach-to-landing speed? _____
9. What is the maneuvering speed (V_A)? _____
10. What is the never-exceed speed (V_{NE})? _____
11. What is the maximum structural cruising speed (V_{NO})? _____
12. What engine-out glide speed will give you the maximum range? _____
13. What airspeed is used for a
Short-field takeoff? _____ Short-field landing? _____
Soft-field takeoff? _____ Soft-field landing? _____
14. What is the service ceiling? _____
15. What is the make and horsepower of the engine?

16. What is the estimated true airspeed at 5,000 feet and 65% power? _____
17. What RPM or combination of RPM and manifold pressure yields 65% power at 5,000 feet MSL?
_____ RPM _____ MP
18. How many gallons of fuel are consumed per hour at 65% power at 5,000 feet MSL? _____

19. How many usable gallons of fuel can your aircraft carry? _____
20. Where are the fuel tanks located and what are their capacities?
Main tank _____ gallons _____
Left tank _____ gallons _____
Right tank _____ gallons _____
Rear tank _____ gallons _____
Auxiliary tanks _____ gallons _____
21. With full fuel, 65% power, at 5,000 feet, allowing a 45 minute reserve, what is the maximum duration (in hours)? _____
22. What speed will give you the best glide ratio? _____
23. What is the octane rating and color of the fuel used by the aircraft? _____
24. How do you drain the fuel sumps?

25. What weight of oil is used? _____
26. Is the landing gear fixed, manual, hydraulic, or electric? _____ If retractable, what is the back-up system for lowering the gear? _____
27. What is the maximum demonstrated allowable crosswind component for the aircraft? _____
28. How many persons will the aircraft safely carry with full fuel? _____
29. What is the maximum allowable weight the aircraft can carry in the baggage compartments? _____
30. What takeoff distance is required to clear a 50-foot obstacle at maximum gross weight at a pressure altitude of 5,000 feet and 90°F (assume no wind and a hard-surfaced runway)? _____
31. What would be the answer to Question 30 if the takeoff was made from sea level pressure altitude?

32. Does high humidity increase or decrease the takeoff distance? _____

33. What landing distance is required at 2,300 pounds at a pressure altitude of 2,000 feet and standard temperature (assume no wind or obstacle)?

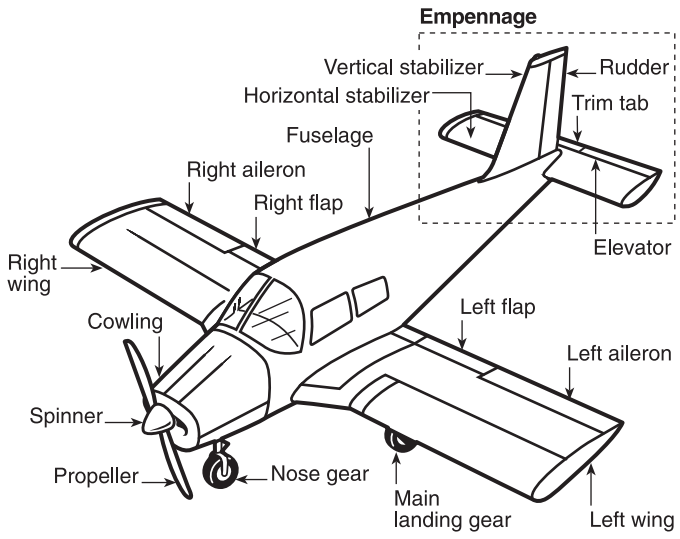
34. How do you determine pressure altitude? _____
35. What is your maximum allowable useful load?

36. Solve the weight and balance problem for the flight plan you intend to fly. If you plan to fly solo, also solve the problem for a 180-pound passenger in each seat. Does your load fall within the weight and balance envelope? _____ What is your gross weight? _____ If you solved the problem with 180-pound passengers in each seat, how much fuel could you carry? _____ Where would this fuel be tanked? _____ If you carry full fuel, how much baggage could you carry? _____ Where would this baggage be placed? _____

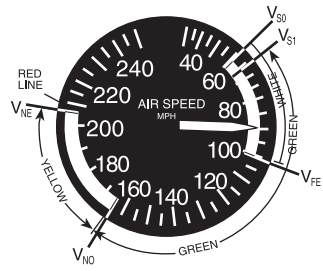
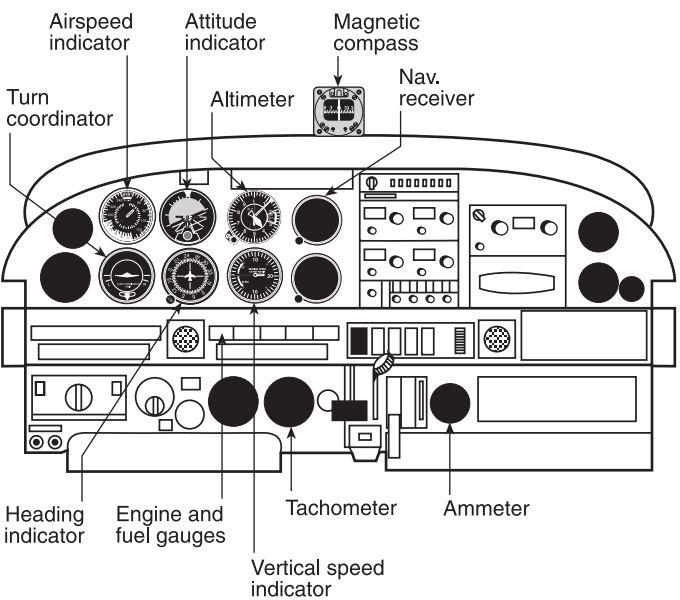
V Speeds

V_A	Design maneuvering speed
V_F	Design flap speed
V_{FE}	Maximum flap extended speed
V_{LE}	Maximum landing gear extended speed
V_{LO}	Maximum landing gear operating speed
V_{NE}	Never-exceed speed
V_{NO}	Maximum structural cruising speed
V_{S0}	Stalling speed or the minimum steady flight speed in the landing configuration
V_{S1}	Stalling speed or the minimum steady flight speed obtained in a specific configuration
V_X	Best angle-of-climb speed
V_Y	Best rate-of-climb speed

AIRPLANE FAMILIARIZATION



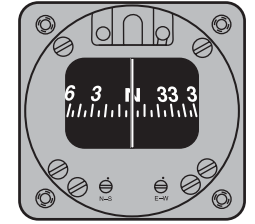
Flight Instruments



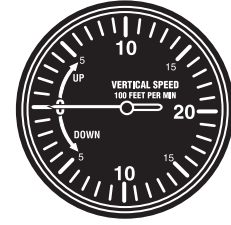
Airspeed Indicator
Pitot-Static System



Altimeter
Static System



Magnetic Compass



Vertical Speed Indicator
Static System



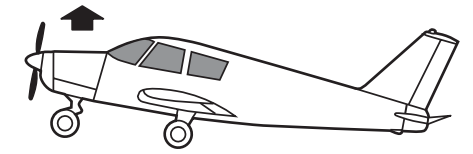
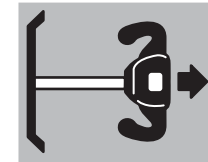
Turn Coordinator
Usually Electric

Flight Controls

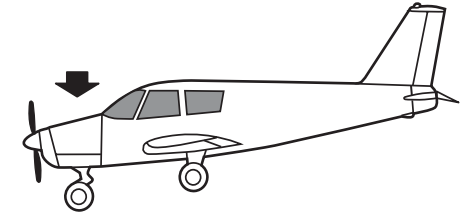
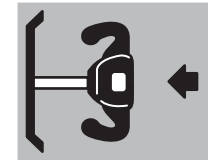
Elevators

The elevators provide control of the pitch attitude about the airplane's lateral axis. Elevators are the key to controlling the angle of attack.

- When control wheel (yoke) is pulled toward pilot, the nose pitches up.



- When control wheel (yoke) is pushed away from pilot, the nose pitches down.



Attitude Indicator
Vacuum System



Heading Indicator
Vacuum System

(continued)

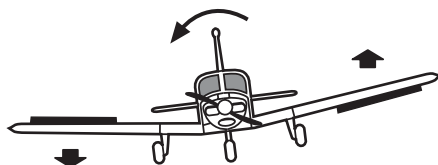
Ailerons

The primary use of the ailerons is to bank, or roll, the airplane around the longitudinal axis. Banking the wings results in the airplane turning in the direction of the bank.

- When control wheel (yoke) is turned to the left, left aileron is raised and airplane rolls to the left.



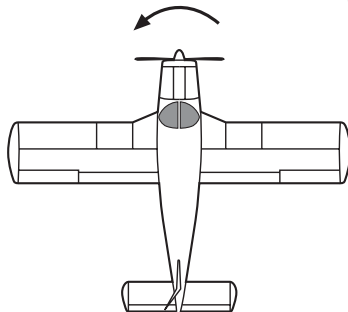
- When control wheel (yoke) is turned to the right, right aileron is raised and airplane rolls to the right.



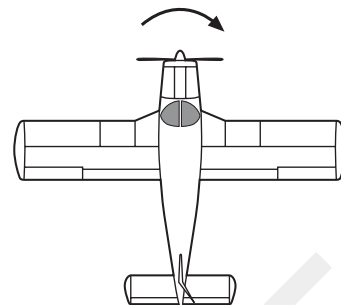
Rudder

The rudder is used to control the direction (left or right) of yaw about the airplane's vertical axis.

- When left rudder is pushed, the nose pivots to the left.



- When right rudder is pushed, the nose pivots to the right.



Cockpit Controls

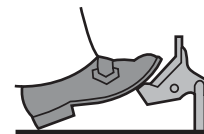
Yoke

Hold yoke with your left hand. Your grip should be firm but relaxed.



Rudder pedals

Place your heels on the floor and toes, or the balls of the feet, on the rudder pedals. Pressures can be exerted more accurately by the toes, or the balls of the feet, than by the instep.



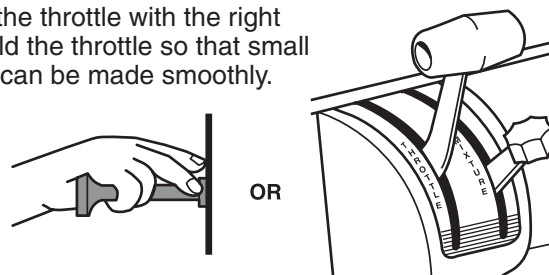
Brakes

To apply the airplane brakes, depress the top of the rudder pedals. Do the same when setting the parking brake.



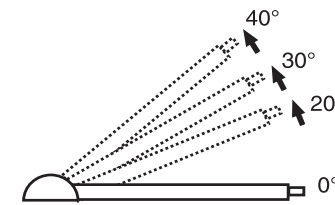
Throttle

Operate the throttle with the right hand. Hold the throttle so that small changes can be made smoothly.



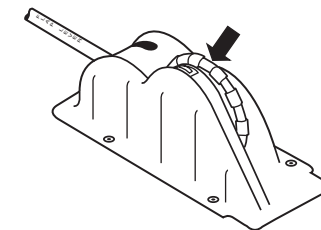
Flaps

Flaps increase the wing's lift by increasing its area or its camber. Flaps also cause drag because they extend beneath the wing. The lift/drag ratio is determined by the degree of flap extension. Using flaps lowers the wing's stalling speed, and increases the rate of descent without an increase in airspeed.

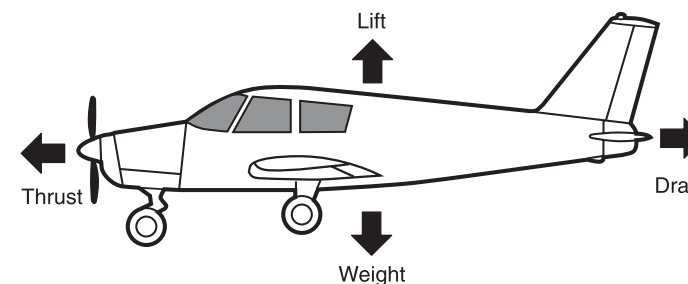


Trim Tab

The purpose of trim tab is to relieve control pressure on the flight controls. Set trim for airspeed (attitude) desired. The trim tab is operated by the trim wheel.



Forces Acting on the Airplane in Flight



NORMAL TAKEOFF & CLIMB

(Private, Sport, Commercial, CFI)

Objective: Takeoff and climb out to the downwind leg of the traffic pattern.

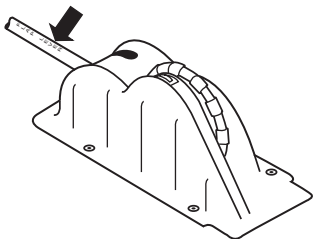
Task: Check Manufacturer Recommendations

1

- Complete preflight inspection (see Page 4)
- Complete starting airplane check (see Page 6)
- Taxi to the upwind runway

2

- Complete before-takeoff check (see Page 6a)
- Wing flaps 0° for normal takeoff



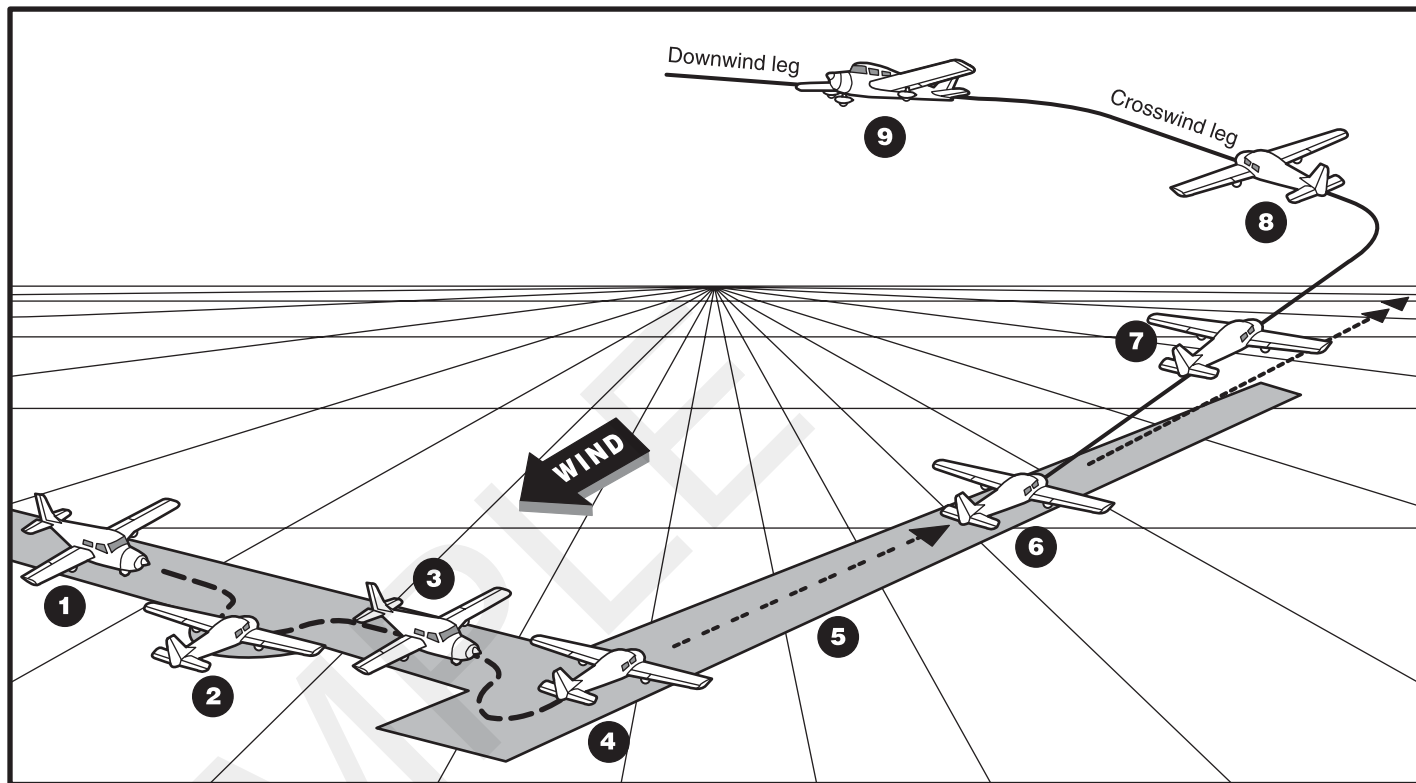
- Know local airport traffic pattern and altitude procedures
- Practice situational awareness and runway incursion avoidance procedures

3

- Obtain takeoff and departure clearances, if required
- Look out and check that runway and approaches are all clear

4

- Line up on runway centerline, nose wheel straight
- Select a reference point straight ahead for tracking



- Keep heels on floor, and toes on rudder pedals, not brakes



- Apply full throttle smoothly and positively



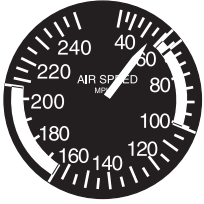
5

- Keep straight with rudder
- Keep wings level with aileron
- Check RPM for full power
- Check engine instruments are in the green arc
- Ease the weight off nose wheel as elevator becomes effective

(continued)

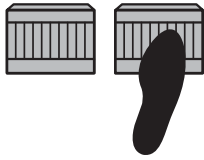
6

- Leave runway at lift-off speed



Manufacturer Recommended lift-off speed _____ knots

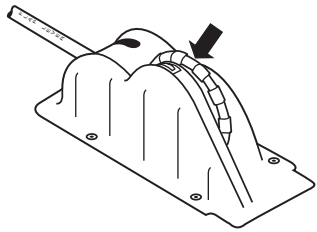
- Use right rudder to offset torque as required



- Keep right hand on the throttle

7

- Establish the attitude that results in V_Y with full throttle
 Manufacturer Recommended V_Y _____ knots
- Trim off any control pressure



- Maintain wings level with aileron, coordinate with rudder



- Retract gear after positive rate of climb is established, and a landing cannot be made on remaining runway
- Scan for traffic
- Maintain a straight track over the extended runway centerline

8

- Beyond end of runway and within 300 feet of traffic pattern altitude, make a climbing turn to crosswind leg (bank angle 20° maximum)
- Allow for wind drift to keep a square pattern
- Maintain climb speed and continue to climb to pattern altitude
- Level off at pattern altitude
- Scan for traffic

9

- Within 1/2 to 1 mile from the runway, make a medium turn to downwind leg (bank angle 30° maximum)
- Scan for traffic
- To depart the traffic pattern, either climb straight out from the upwind leg, or turn 45° beyond the departure end of the runway after reaching pattern altitude

Evaluation:

- Use 0° (normal takeoff) flap setting
- Clear area and align airplane on runway centerline
- Advance throttle smoothly to takeoff power
- Rotate and lift off at the recommended airspeed and accelerate to V_Y
- Establish pitch attitude for V_Y and maintain V_Y during the climb (+10/-5 knots for Private and Sport, ± 5 knots for Commercial and CFI)
- Retract landing gear after a positive rate of climb is established
- Maintain takeoff power to a safe maneuvering altitude
- Maintain directional control and proper wind-drift correction throughout takeoff and climb
- Comply with noise abatement procedures
- Complete the appropriate checklist

CROSSWIND TAKEOFF & CLIMB

(Private, Sport, Commercial, CFI)

Objective: Takeoff and climb out to the downwind leg of the traffic pattern with a crosswind component.

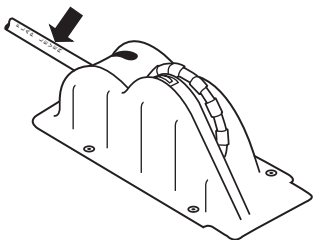
Task: Check Manufacturer Recommendations

1

- Complete preflight inspection (see Page 4)
- Verify crosswind component will not be exceeded
Manufacturer Recommended crosswind component _____ knots
- Complete starting airplane check (see Page 6)
- Taxi to crosswind runway

2

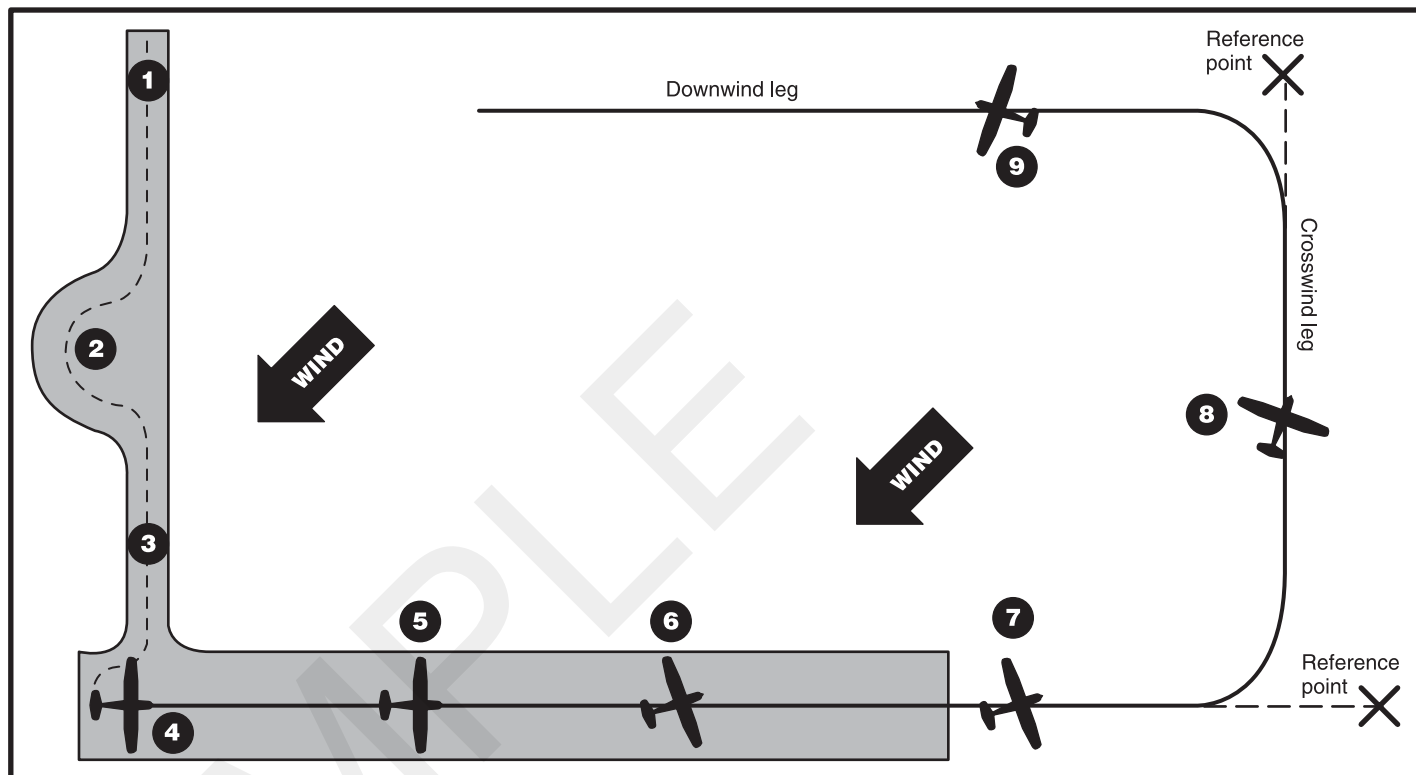
- Complete before-takeoff check (see Page 6a)
- Wing flaps 0° for crosswind takeoff



- Know local airport traffic pattern and altitude procedures

3

- Obtain takeoff and departure clearances, if required
- Look out and check that runway and approaches are all clear

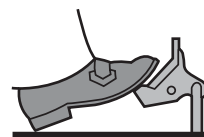


4

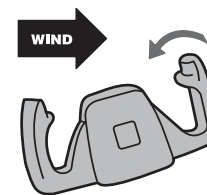
- Line up on runway centerline, nose wheel straight
- Check the windsock



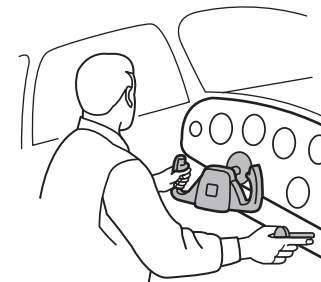
- Select a reference point straight ahead for tracking
- Keep heels on floor, and toes on rudder pedals, not brakes



- Hold full aileron into wind



- Apply full throttle smoothly and positively



(continued)

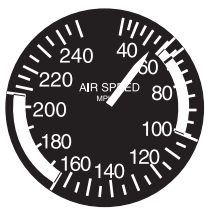
5

- Keep straight with rudder
- Continue to hold aileron into wind and reduce deflection as speed increases
- Hold the nose wheel on the ground
- Check RPM for full power
- Check engine instruments are in the green arc

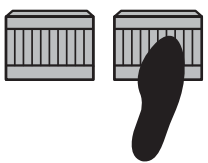
6

- Cleanly leave runway slightly above normal lift-off speed

Manufacturer Recommended lift-off speed _____ knots



- Use right rudder to offset torque as required

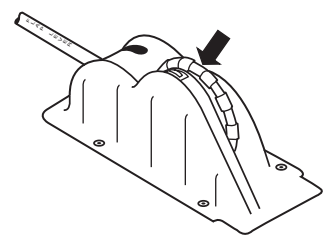


- Keep right hand on the throttle
- Turn into wind to correct for drift

7

- Establish attitude that results in V_Y with full throttle
Manufacturer Recommended V_Y _____ knots

- Trim off any control pressure



- Maintain crab angle with aileron, coordinate with rudder



- Retract gear after positive rate of climb is established, and a landing cannot be made on remaining runway
- Scan for traffic
- Maintain a straight track over the extended runway centerline using a reference point

8

- Beyond end of runway and within 300 feet of traffic pattern altitude, make a climbing turn to crosswind leg (bank angle 20° maximum)
- Allow for wind drift by crabbing, to keep a square pattern
- Maintain climb speed and continue to climb to pattern altitude
- Level off at pattern altitude
- Scan for traffic

9

- Within 1/2 to 1 mile from runway, make a medium turn to downwind leg (bank angle 30° maximum)
- Continue to crab to correct for wind drift
- Scan for traffic
- To depart the traffic pattern, either climb straight out from the upwind leg, or turn 45° beyond the departure end of the runway after reaching pattern altitude

Evaluation:

- Use 0° (crosswind takeoff) flap setting
- Position the flight controls for existing wind conditions
- Clear area and align airplane on runway centerline
- Advance throttle smoothly to takeoff power
- Rotate and lift off at recommended airspeed and accelerate to V_Y
- Establish pitch attitude for V_Y and maintain V_Y during the climb (+10/-5 knots for Private and Sport, ±5 knots for Commercial and CFI)
- Retract landing gear after a positive rate of climb is established
- Maintain takeoff power to a safe maneuvering altitude
- Maintain directional control and proper wind-drift correction throughout takeoff and climb
- Comply with noise abatement procedures
- Complete the appropriate checklist

Low-Wing Aircraft Visualized Flight Maneuvers Manual **Fifth Edition**

This comprehensive maneuvers manual is an excellent visual aid for instructors and pilots in training, covering all the flight maneuvers required for Private, Sport, Commercial, and Flight Instructor certification. Each maneuver is depicted in detail according to type of aircraft in which the lesson will take place, states the objective of the task, and lists the FAA Certification Standards required, serving as an effective learning and teaching tool. Fully illustrated with fold-out pages that show and explain each maneuver on a one-page spread so pilots can see and read complete details on what to do, in the proper order, to successfully demonstrate all required flight maneuvers.

Compact format with spiral binding provides easy access to the fold-out pages. The illustrated fold-outs show each maneuver step-by-step, so pilots understand what they should be looking for outside the cockpit window. Contains full descriptions of stalls, slips, performance and ground reference maneuvers as well as short, soft, and crosswind takeoffs and landings. This revised fifth edition adds a new section on energy management. Also included are suggested checklists for everything from preflight to takeoffs and landings, performance, and checkrides, and an easy-to-use index so pilots can quickly refer to any desired task.



Aviation Supplies & Academics, Inc.
7005 132nd Place SE
Newcastle, Washington 98059 USA
425-235-1500 | asa2fly.com

ASA-VFM-LO-5

TRANSPORTATION USD \$24.95

ISBN 978-1-64425-225-3



52495 >



9 781644 252253