

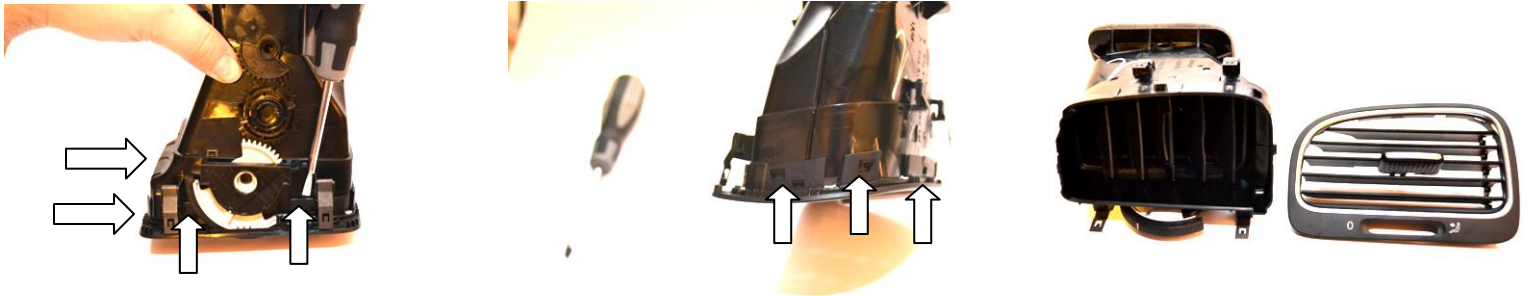
# Mk6 Vent Gauge Assembly – P3cars.com

Updated 12-27-2010

Refer to the “Car Installation” instructions for removing your vent from the car.

**WARNING** – Do this assembly in a warm area with lots of light, allow parts to warm up to room temperature or the vent plastic will be brittle.

**STEP 1:** Prepare the vent. Using a flathead screwdriver, unclip the vent face starting with the bottom clips. You may need to rotate the open/close dial to gain access to the lower clips. Wedge the screwdriver behind the vent front at the tab and force it over the tab.



**STEP 2:** Remove the slats assembly, then remove ONLY the 2 bottom slats and set aside. Remove the adhesive backing from the glass back.



**STEP 3:** Insert the glass into the vent face from behind, make sure the bottom lip of the glass is OVER the bottom ridge of the vent face as shown in the photos below. Clip the slat assembly back into the vent face from behind, pinching the gauge glass in place.



**STEP 4:** Feed the gauge wire through the far left slat, and line up the slat controller onto the inner slat bar before clipping the vent back together. You may need to clip the left side of the vent last to get all the clips to fasten.

