



Step 1:  
Unclip the vent starting on the top right side.



Step 2:  
Unclip the other side of the vent and pull it away, taking care to unclip the center clip in the middle of the vent.



Step 3a: Remove the top of the vent and pivot it forward, and then (3b) unclip the bottom circular tabs.



Step 3b: Remove the top of the vent completely



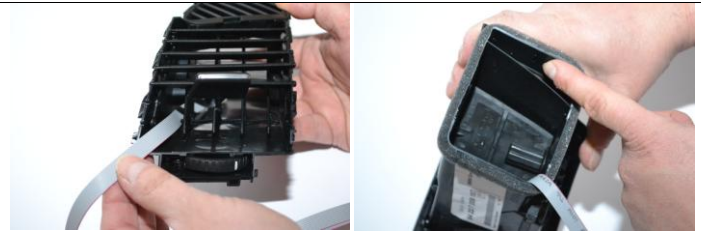
Step 4a: Remove the bottom 3 vent slats ONLY.



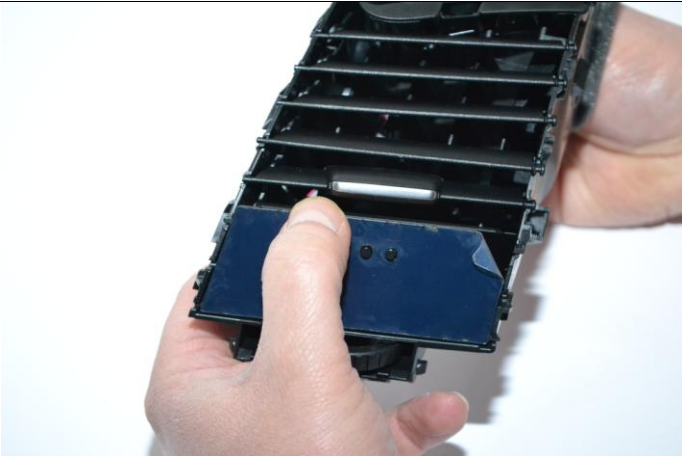
Step 4b: Your vent will now look like this.



Step 5: Prepare the vent gauge display – peel off a corner of the protective cover for ease of removal later.



Step 6: Insert the display cable through the far left side and out of the bottom left corner of the vent.



Step 7: Feed the entire cable through the back of the vent and install the vent gauge display as shown into the tab slots.



Step 8: Re-attach the vent face, starting at the bottom with the 2 circular clips.



Step 9: Work your way up the vent clipping it back together, take care to make sure the metal tabs of the display are in the correct slots.



Step 10: Check to make sure all is secured and you are DONE! You can remove the display cover now if you wish.