

VSC - 2 USER MANUAL AND INSTALLATION GUIDE



Product Description:

The VSC - 2 (Variable Sound Controller) is a direct plug-in remote controller designed to allow tuning of your vehicle's exhaust sound at any time with the push of a button. The controller mounts directly to the valve actuator motor, located near the muffler. Installation is shown on the OEM BMW F80 M3 exhaust system. The VSC - 2 package includes:

QTY 1: VSC - 2 controller unit

QTY 1: Powder coated mounting bracket

QTY 2: Remote control key fob

Product Applications:

The VSC-2 was designed to vary the sound on any F80 M3, F82 or F83 M4 equipped with the factory BMW electronic exhaust valve actuator. The VSC-2 is a must when paired with high flow downpipes or other exhaust modifications but even with the factory exhaust system, VSC-2 users enjoy better sound quality on startup, a more continuous, pleasurable soundtrack during acceleration, better driver feedback, more exhaust burble on deceleration, and the ability to keep the exhaust valve open or closed at any time in any driving mode. The VSC-2 can be used on the following exhaust systems:

BMW 2015+ F80 M3 Sedan
BMW 2015+ F82 M4 Coupe
BMW 2015+ F83 M4 Convertible

- **Factory BMW exhaust**
- **BMW M-Performance exhaust**
- **Other aftermarket exhaust systems ***

** Call for other fitment applications.*

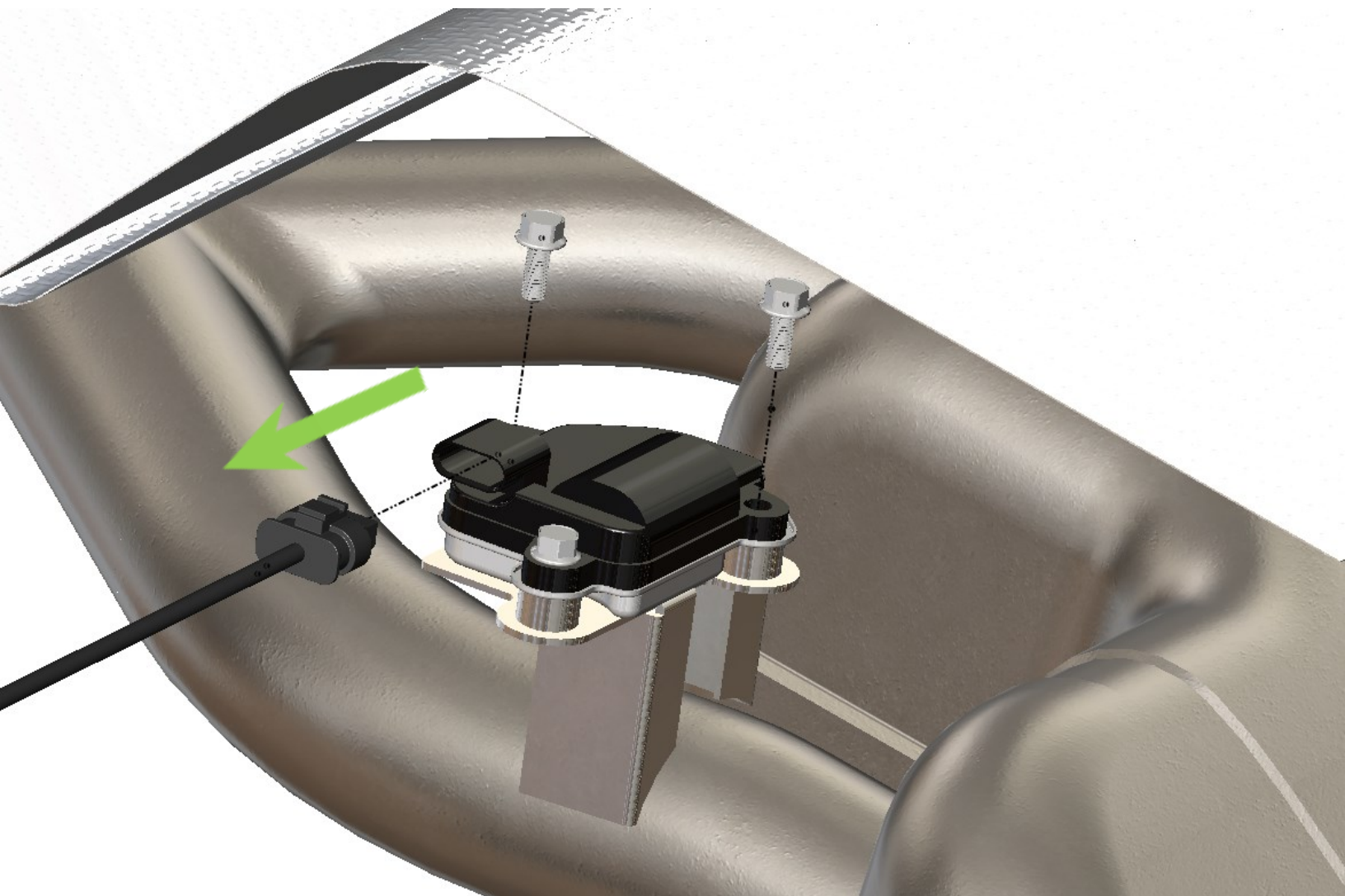
Proper Use:

- The VSC-2 standard configuration will default the exhaust valve to the open position on every startup and close the valve by briefly pressing the “**On**” button. Press “**Off**” to open the valve again.
- The unit may be operated anytime the car has power with or without the engine started. To start the car with the exhaust valve closed, turn the vehicle power on without starting the engine. Press the “**On**” button to close the valve. You will immediately hear the exhaust valve actuate. Start the engine.
- Different control configurations are also available. Choose between Open, Closed, and Auto modes for the default and actuated setting.

Installation:

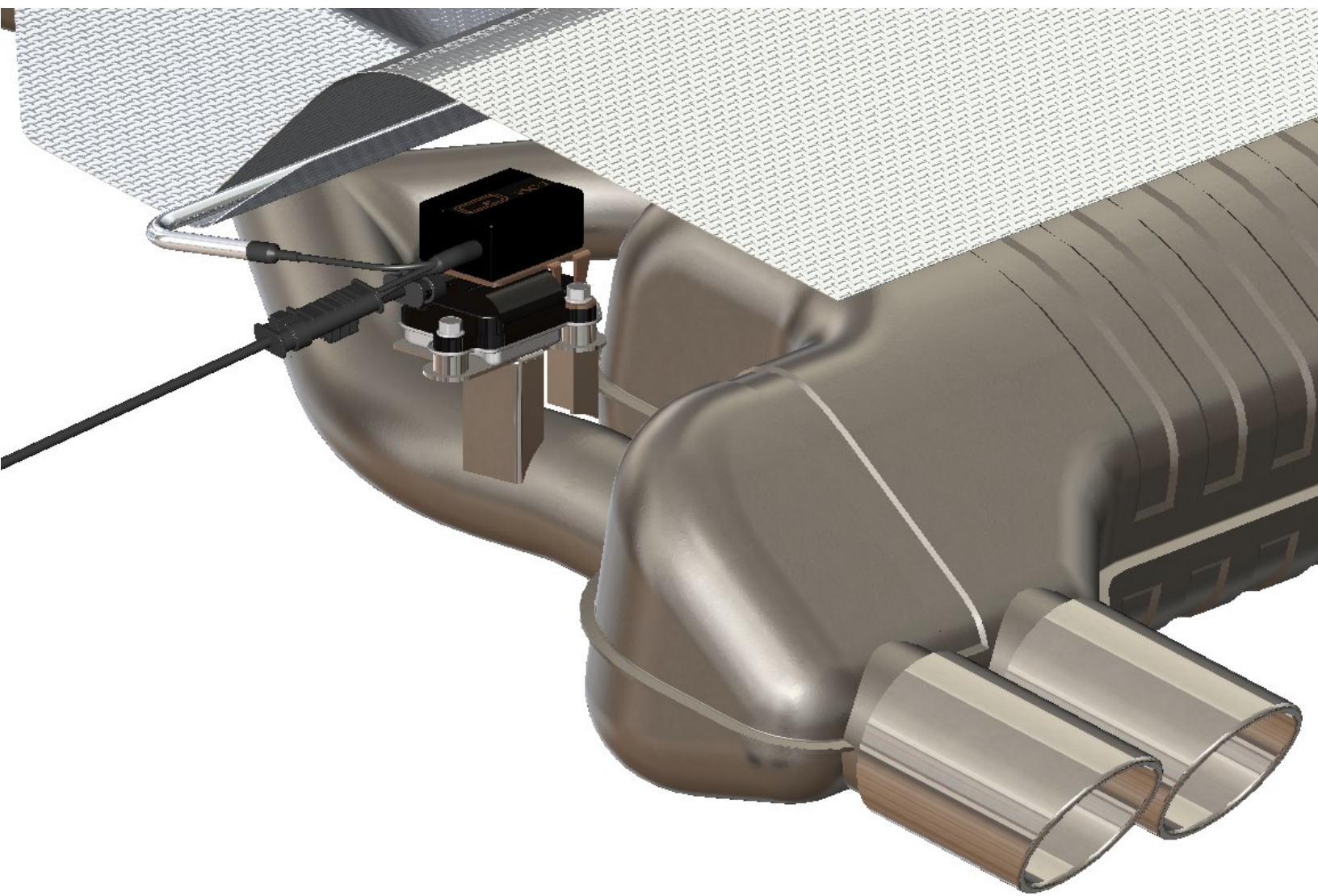
Tools Required: 10mm box end wrench or small socket wrench

Step 1: With the car completely off, locate the 2 valve actuator motors near the muffler. Remove the factory plug from the driver and passenger side valve motors by depressing the tab on top of the connector and pulling. Using the 10mm wrench, remove the top back screws from the motor. The front screw will not be removed and will keep the motor in position.



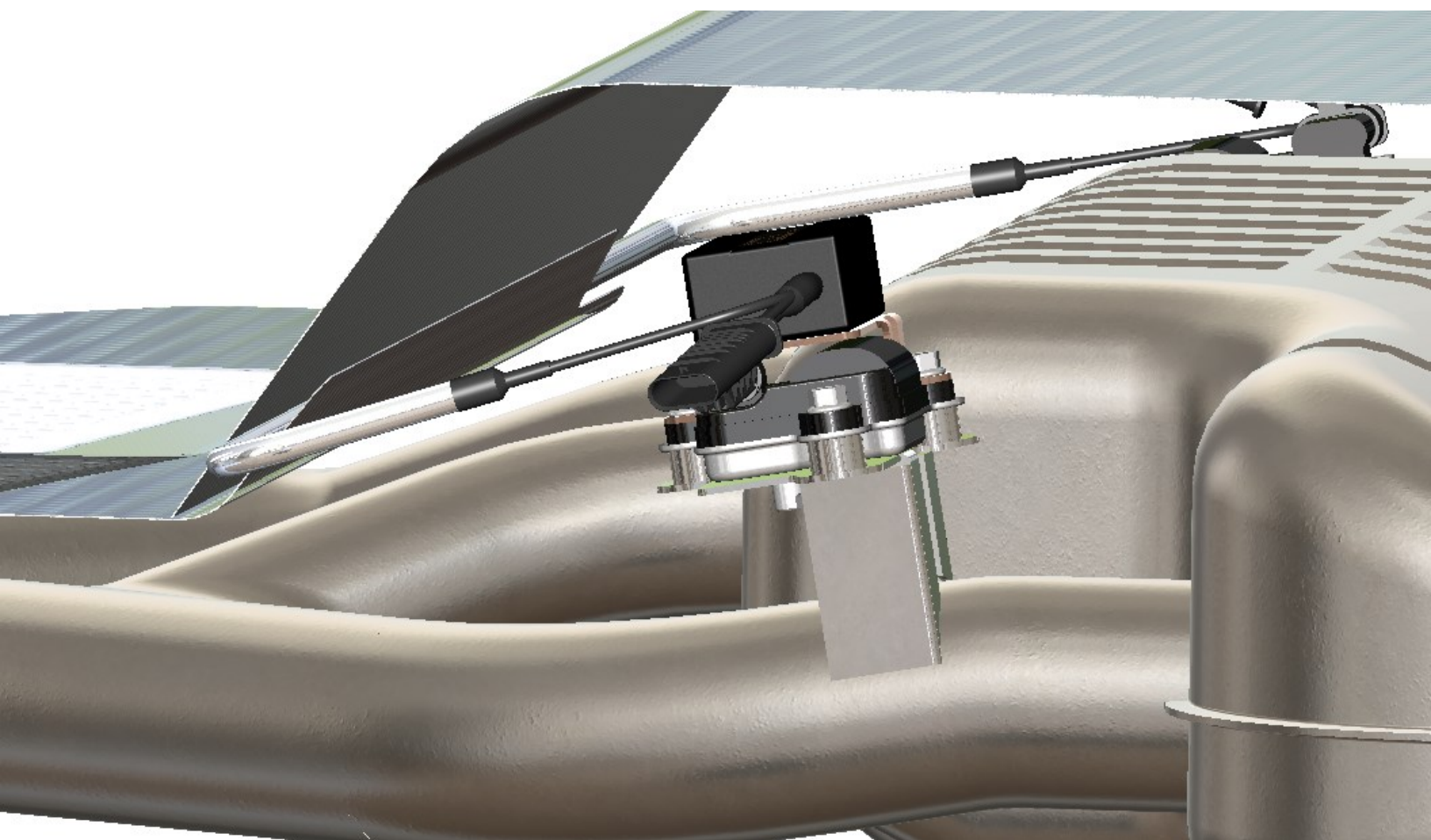
Step 2:

Place the VSC-2 controller onto the motor. Replace and tighten the two screws. Plug the small connector on the VSC-2 into the motor and the large connector on the VSC-2 into the factory plug, until a clicking sound is heard. Ensure wires are tucked up away from the ground and the exhaust system.



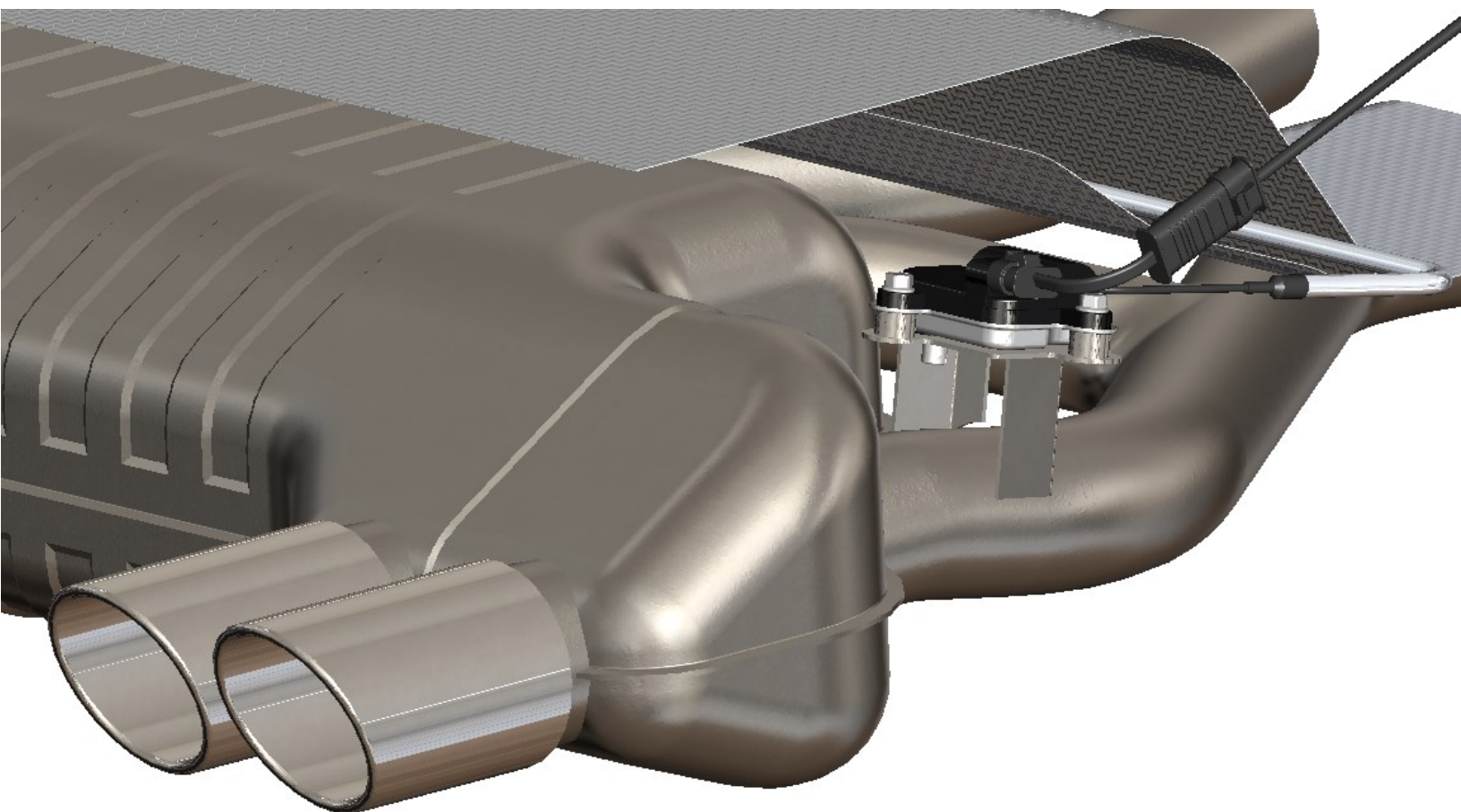
Step 3:

Route the remaining wiring to the passenger side by tucking the heat-shield wrapped wiring behind the lip in the factory heat shield along the whole length of the shield. The wiring should be squeezed by the shield to prevent movement. It is ok to deform the wiring heat-shield while installing it.



Step 4:

On the passenger side, plug the small connector on the VSC-2 extension wire to the valve motor and the larger connector into the small factory connector until a clicking sound is heard. Ensure wires are tucked away from the ground and exhaust system.



Failure to follow the procedures in this document may cause product damage. CG Precision has no control over other aftermarket manufacturers' design and production and therefore, product fitment may vary slightly when used on these exhaust systems.

Please contact CG Precision for additional guidance:

Email: support@cgprecision.com

Phone: 520-789-6305

** CG Precision provides a 12 month warranty against defects in material and workmanship for as long as the original purchaser owns the vehicle.*

** Products are not EPA or CARB approved and are intended for off-road/track use only.*

** All liabilities resulting from the use of these products lies solely with the purchaser/user. Please use at your own risk.*

