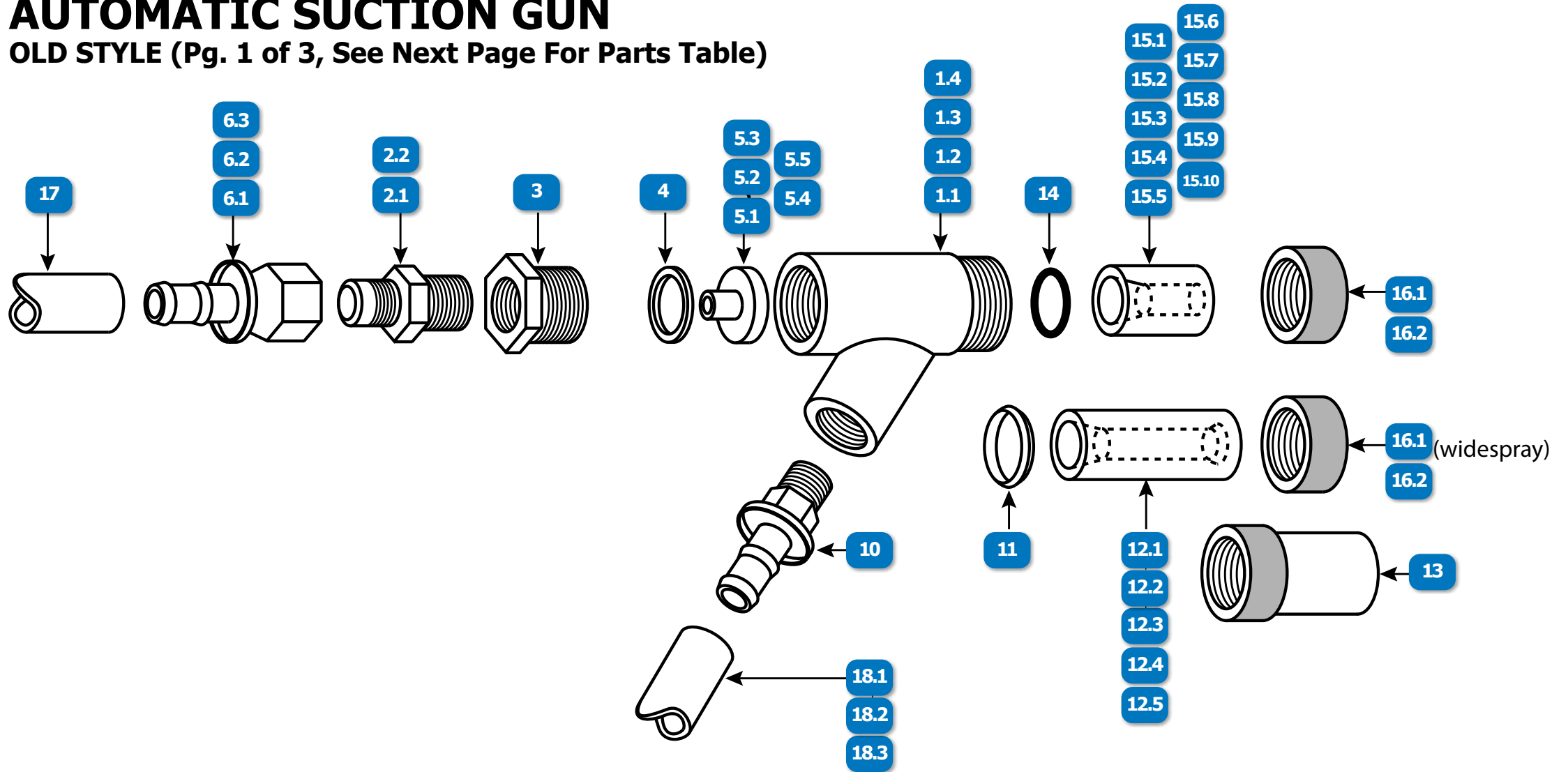


AUTOMATIC SUCTION GUN

OLD STYLE (Pg. 1 of 3, See Next Page For Parts Table)



www.idsblast.com
 (317) 545-0665 - (800) 800-0665
 2717 Tobey Dr. Indianapolis, IN 46219

AUTOMATIC SUCTION GUN

OLD STYLE (Pg. 2 of 3)

#	DESCRIPTION	PART #
1.1	GUN, AUTO, LEFT MOUNT, OLD STYLE	1655-200
1.2	GUN, AUTO, CENTER MOUNT, OLD STYLE	1655-210
1.3	GUN, AUTO, RIGHT MOUNT, OLD STYLE	1655-220
1.4	GUN, AUTO, TUMBLE BASKET, OLD STYLE	1655-330
2.1	FITTING, 3/8" NPT x 1/2" UNION	1219-360
2.2	3/8" HOSE TO 3/8" PIPE ADAPTOR	100-0220
3	HEX BUSHING	139-50
4	WASHER, RUBBER, 1"	12749
5.1	ORIFICE, 1/8", OLD STYLE	1349-270
5.2	ORIFICE, 5/32", OLD STYLE	1349-280
5.3	ORIFICE, 3/16", OLD STYLE	1349-290
5.4	ORIFICE, 7/32", OLD STYLE	1349-330
5.5	ORIFICE, 1/4", OLD STYLE	1349-350
6.1	FITTING, 3/8" SWIVEL x 3/8" PUSH LOK	1219-30
6.2	FITTING, 1/2" SWIVEL x 1/2" PUSH LOK	1219-300
6.3	FITTING, 1/2" SWIVEL TO 3/8" BARB	1219-350

#	DESCRIPTION	PART #
10	FITTING, 1/2" HOSE BARB x 3/8" NPT	1219-340
11	RETAINING RING, WIDE SPRAY	1424-480
12.1	NOZZLE, TUNGSTEN CARBIDE, STRAIGHT BORE, WIDE SPRAY GUN INSERT, 3/8" BORE, 7/8" OD x 2-3/4" LENGTH	TL170-6
12.2	NOZZLE, BORON CARBIDE, STRAIGHT BORE, WIDE SPRAY, GUN INSERT, 5/16" BORE, 7/8" OD x 2-3/4" LENGTH	1348-590
12.3	NOZZLE, BORON CARBIDE, STRAIGHT BORE, WIDE SPRAY, GUN INSERT, 3/8" BORE, 7/8" OD x 2-3/4" LENGTH	1348-600
12.4	NOZZLE, BORON CARBIDE, STRAIGHT BORE, WIDE SPRAY, GUN INSERT, 7/16" BORE, 7/8" OD x 2-3/4" LENGTH	1348-610
12.5	NOZZLE, BORON CARBIDE, STRAIGHT BORE, WIDE SPRAY, GUN INSERT, 1/2" BORE, 7/8" OD x 2-3/4" LENGTH	1348-615
13	GUARD, WIDE SPRAY NOZZLE	1661-60
14	O-RING	1423-70
15.1	NOZZLE, CERAMIC, STRAIGHT BORE, GUN INSERT, 5/16" BORE, 7/8" OD x 1-3/8" LENGTH	CL166-5
15.2	NOZZLE, CERAMIC, STRAIGHT BORE, GUN INSERT, 3/8" BORE, 7/8" OD x 1-3/8" LENGTH	CL166-6
15.3	NOZZLE, TUNGSTEN CARBIDE, STRAIGHT BORE, GUN INSERT, 5/16" BORE, 7/8" OD x 1-3/8" LENGTH	TL166-5
15.4	NOZZLE, TUNGSTEN CARBIDE, STRAIGHT BORE, GUN INSERT, 3/8" BORE, 7/8" OD x 1-3/8" LENGTH	TL166-6
15.5	NOZZLE, TUNGSTEN CARBIDE, STRAIGHT BORE, GUN INSERT, 7/16" BORE, 7/8" OD x 1-3/8" LENGTH	TL166-7
15.6	NOZZLE, TUNGSTEN CARBIDE, STRAIGHT BORE, GUN INSERT, 1/2" BORE, 7/8" OD x 1-3/8" LENGTH	TL166-8
15.7	NOZZLE, BORON CARBIDE, STRAIGHT BORE, GUN INSERT, 5/16" BORE, 7/8" OD x 1-3/8" LENGTH	1348-630
15.8	NOZZLE, BORON CARBIDE, STRAIGHT BORE, GUN INSERT, 3/8" BORE, 7/8" OD x 1-3/8" LENGTH	1348-640

AUTOMATIC SUCTION GUN

OLD STYLE (Pg. 3 of 3)

#	DESCRIPTION	PART #
15.9	NOZZLE, BORON CARBIDE, STRAIGHT BORE, GUN INSERT, 7/16" BORE, 7/8" OD x 1-3/8" LENGTH	1348-650
15.10	NOZZLE, BORON CARBIDE, STRAIGHT BORE, GUN INSERT, 1/2" BORE, 7/8" OD x 1-3/8" LENGTH	1348-1090
16.1	NUT, NOZZLE HOLDING	1347-1240
16.2	NUT, NOZZLE HOLDING, WIDE SPRAY	1347-1510
17	HOSE, AIR, INSTA-GRIP, BLACK, NOMINAL 1/2" ID, WP 300 PSI, PRICE PER FOOT, SOLD IN 10' INCREMENTS ONLY, REEL SIZE 500'	535-278-016
18.1	HOSE, SUCTION, CLEAR, NOMINAL 1/2" ID x 3/4" OD, PRICE PER FOOT, SOLD IN 10' INCREMENTS ONLY, BOX SIZE 100'	C-210-A1/2
18.2	HOSE, SUCTION, BLACK, NOM. ID 1/2" x 15/16" OD, 2 PLY, PRICE PER FOOT, SOLD IN 10' INCREMENTS ONLY, REEL SIZE 400 FT	112-4710
18.3	SURVIVOR® HOSE, SUCTION, BLACK, NOM. ID 1/2" x 15/16" OD, 2 PLY, PRICE PER FOOT, SOLD IN 10' INCREMENTS, REEL SIZE 400 FT	SUR121516 B