



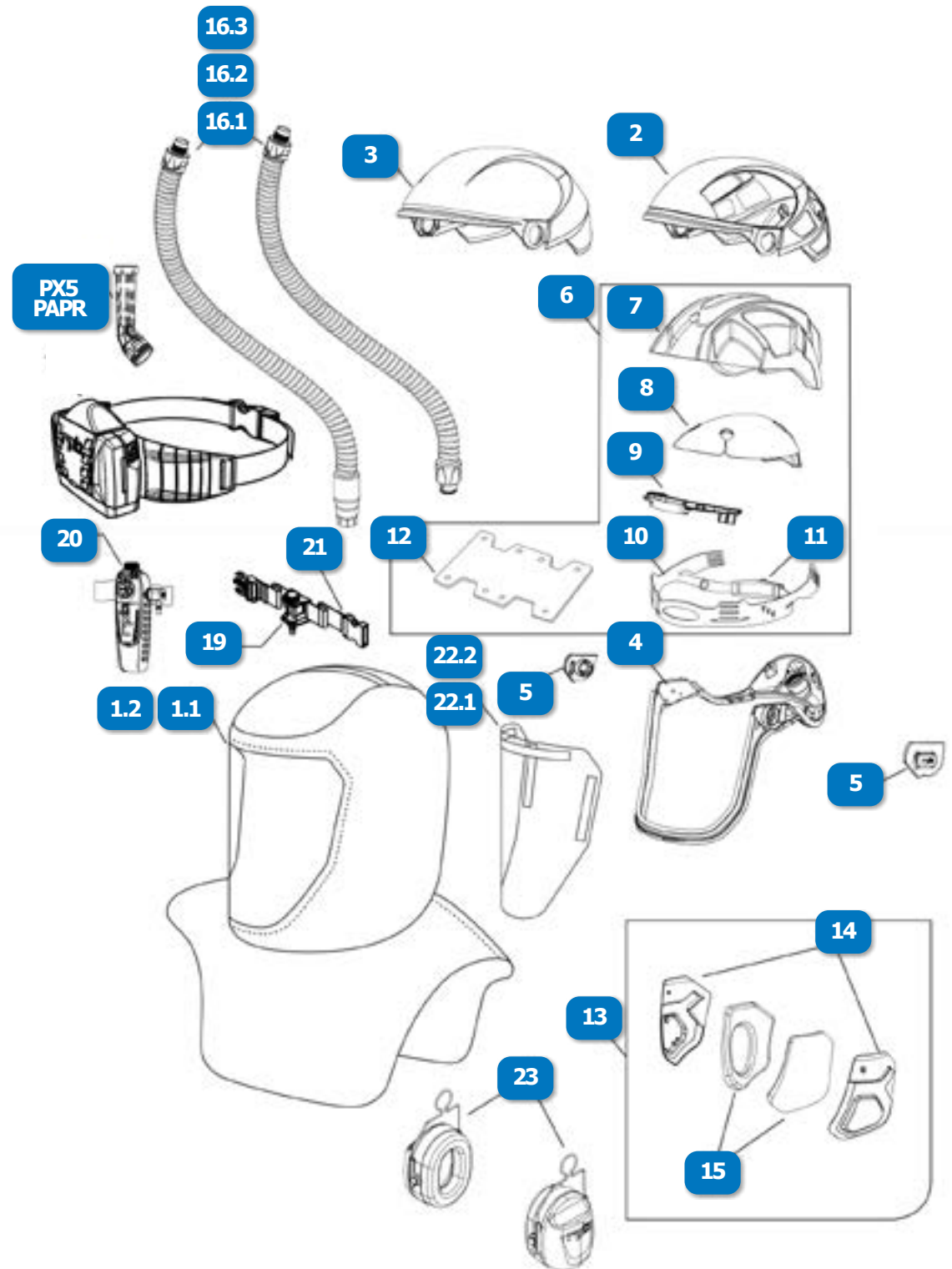


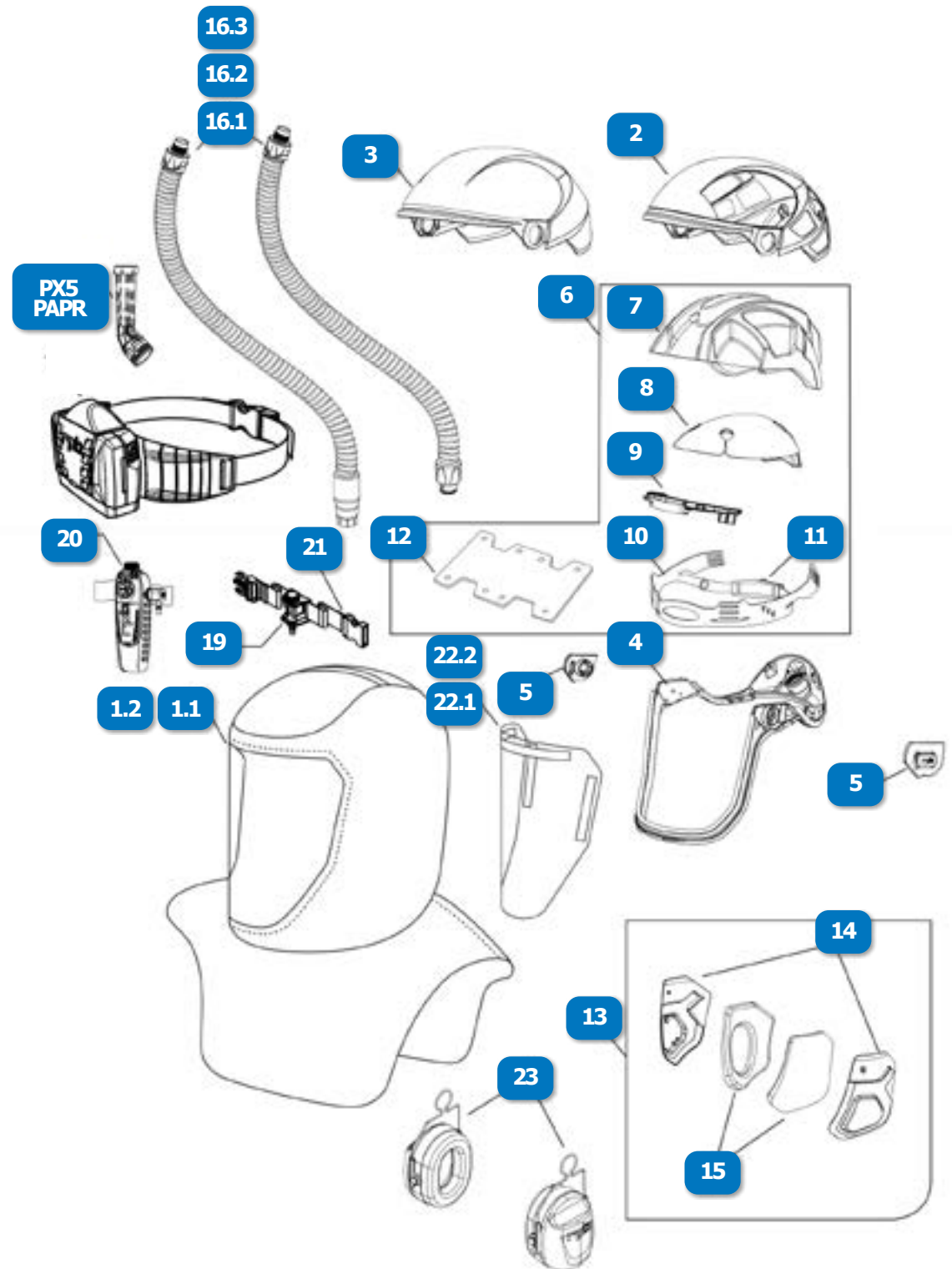
T-LINK RPB® (Pg. 1 of 2)

#	DESCRIPTION	PART #
	RPB® T-LINK® RESPIRATOR W/ CONSTANT FLOW VALVE, TYCHEM QC (2000) HOOD, BUMP CAP (NIOSH APPROVAL NO. TC-19C-0537 TYPE C)	17-111-12
	RPB® T-LINK® RESPIRATOR W/ CONSTANT FLOW VALVE, TYCHEM SL (4000) HOOD W/SEALED SEAMS, BUMP CAP (NIOSH APPROVAL NO. TC-19C-0537 TYPE C)	17-111-13
	RPB® T-LINK® RESPIRATOR W/ PX5 AIR PAPR BELT MOUNTED POWERED RESPIRATOR & HIGH EFFICIENCY FILTER, TYCHEM QC HOOD, BUMP CAP, NOT FOR USE IN WET PAINTING APPLICATIONS (NIOSH APPROVAL NO. TC -21C-1121 TYPE C)	17-118-12
	RPB® T-LINK® RESPIRATOR W/ PX5 AIR PAPR BELT MOUNTED POWERED RESPIRATOR & HIGH EFFICIENCY FILTER, TYCHEM SL HOOD, BUMP CAP, NOT FOR USE IN WET PAINTING APPLICATIONS (NIOSH APPROVAL NO. TC -21C-1121 TYPE C)	17-118-13
1.1	T-LINK® AND T200 - FULL HOOD W/NECK SEAL, TYCHEM® QC (2000)	17-712
1.2	T-LINK® AND T200 - FULL HOOD W/NECK SEAL, TYCHEM® SL (4000) SEALED SEAMS	17-713
2	T-LINK® LIGHTWEIGHT BUMP CAP ASSEMBLY, INCLUDES JAW	17-110
3	T-LINK® HARD HAT ASSEMBLY, INCLUDES JAW	17-010
4	LINK SYSTEM, JAW ASSEMBLY	16-514
5	T-LINK® LENS MOUNT CLIPS, LEFT AND RIGHT PAIR	17-512
6	LINK® COMFORT-LINK™ FIT SYSTEM	16-520-T
7	LINK® SYSTEM, IMPACT ABSORBER	16-521
8	LINK® SYSTEM, COMFORT PAD	16-522
9	LINK® SYSTEM, HEAD HARNESS BRACKET AND AIR DIRECTOR	16-525
10	LINK® SYSTEM, HEAD HARNESS ASSEMBLY	16-531



T-LINK RPB® (Pg. 2 of 2)

#	DESCRIPTION	PART #
11	LINK® SYSTEM & T200 - HEAD HARNESS RACHET ADJUSTER ASSEMBLY	16-530
12	LINK® SYSTEM & T200 - HEAD HARNESS BROW PAD	16-526
13	LINK® SYSTEM, SIDE PADDING SYSTEM	16-520-S
14	LINK® SYSTEM, SIDE PADDING SYSTEM, FRAMES ONLY	16-527
15	LINK® SYSTEM, SIDE PADDING SYSTEM, 1 PAIR, PADS ONLY, ACCOMMODATES COMMS-LINK™ SYSTEM	16-528
16.1	LINK® SYSTEM, BREATHING TUBE, NEW STYLE (RPB PN 04-837A), FOR PX4 AIR PAPR, INCLUDES ADAPTOR TO CONNECT NEW STYLE BREATHING TUBE TO OLD STYLE RESPIRATOR (REPLACES RPB PN 04-835)	04-835
16.2	LINK® SYSTEM, BREATHING TUBE, NEW STYLE (RPB PN 04-833A), FOR SUPPLIED AIR, INCLUDES ADAPTOR TO CONNECT NEW STYLE BREATHING TUBE TO OLD STYLE RESPIRATOR (REPLACES RPB PN 04-830)	04-830
16.3	LINK® SYSTEM, AIR INLET ADAPTER FOR Z-LINK & T-LINK (FOR CONNECTING NEW STYLE BREATHING TUBE TO Z-LINK & T-LINK)	16-519
19	CONSTANT FLOW VALVE ASSEMBLY W/BELT	03-101
20	RPB® C40 RESPIRATOR CLIMATE CONTROL DEVICE, COOLING/HEATING, ADJUSTABLE, W/BSP THREAD & BELT	03-501
21	BELT W/BUCKLE	NV-2022
22.1	T-LINK® AND T200 CLEAR-VISION PREMIUM LENS CASSETTE, INCLUDES 7 TEAR-OFF LENSES, VACUUM SEALED TO PREVENT DUST/POWDER FROM GETTING BETWEEN LENSES	17-817
22.2	RPB® T-LINK®, T100™ & Z100™ PEEL-OFF STANDARD LENSES (50-PACK)	07-123
23	QUIET-LINK® HELMET EARMUFFS, 25 DBA ATTENUATION, FOR T-LINK® & Z-LINK® RESPIRATOR SYSTEMS, REPLACES SIDE PADDING SYSTEM. ALSO COMPATIBLE WITH Z4® WELDING RESPIRATOR.	18-533



www.idsblast.com
 (317) 545-0665 - (800) 800-0665
 2717 Tobey Dr. Indianapolis, IN 46219