

AUTOMATIC SUCTION GUN

NEW STYLE (Pg. 1 of 2)

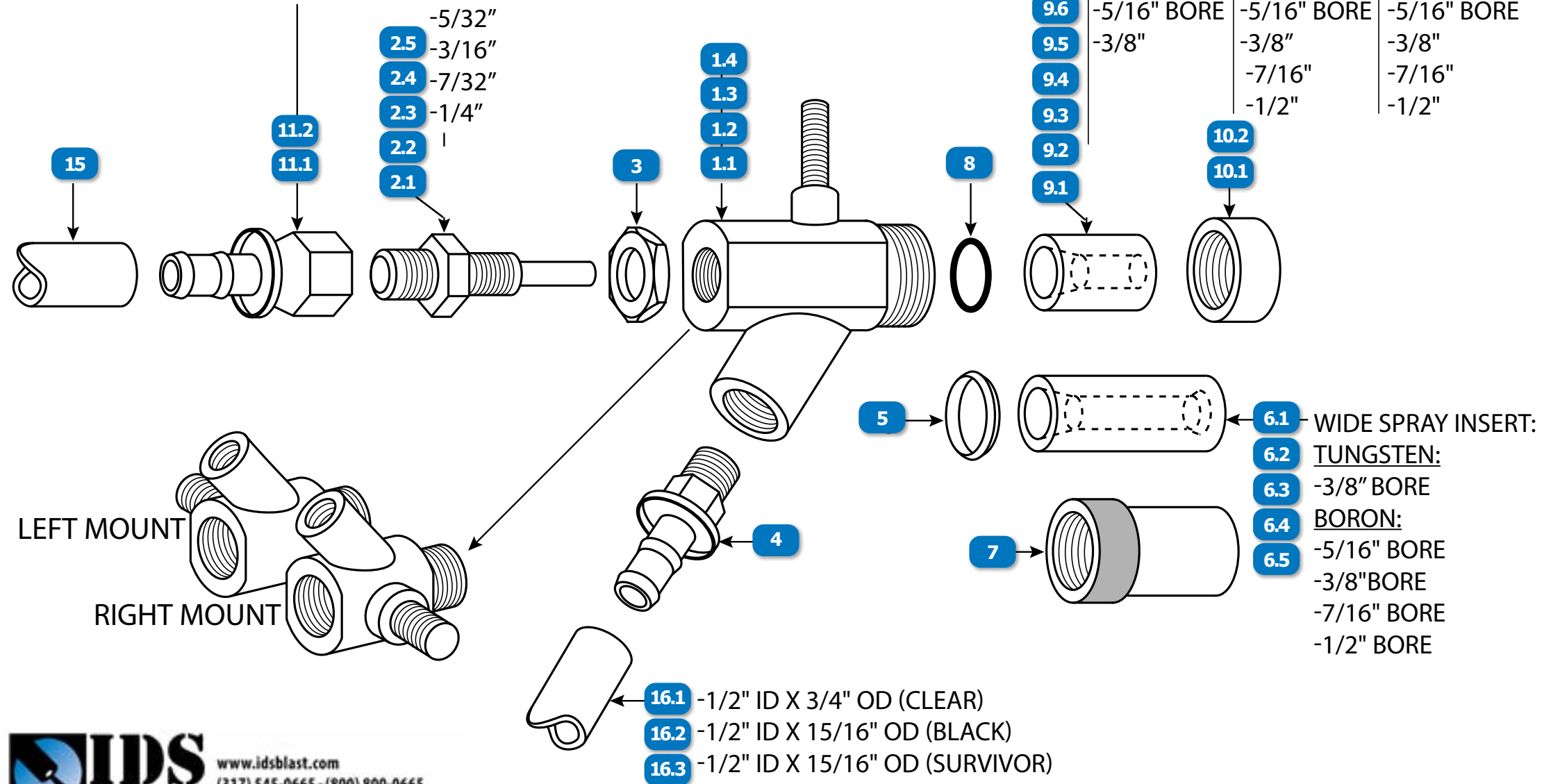
-1/2" SWIVEL TO 3/8" BARB ORIFICE:
 -1/2" SWIVEL x 1/2" PUSH LOK -1/8"

- 2.5 -5/32"
- 2.4 -3/16"
- 2.3 -7/32"
- 2.2 -1/4"
- 2.1

- 9.10
- 9.9
- 9.8
- 9.7
- 9.6
- 9.5
- 9.4
- 9.3
- 9.2
- 9.1

NOZZLE:

	CERAMIC:	TUNGSTEN:	BORON:
9.6	-5/16" BORE	-5/16" BORE	-5/16" BORE
9.5	-3/8"	-3/8"	-3/8"
9.4		-7/16"	-7/16"
9.3		-1/2"	-1/2"



LEFT MOUNT

RIGHT MOUNT



www.idsblast.com
 (317) 545-0665 - (800) 800-0665
 2717 Tobey Dr. Indianapolis, IN 46219

- 16.1 -1/2" ID X 3/4" OD (CLEAR)
- 16.2 -1/2" ID X 15/16" OD (BLACK)
- 16.3 -1/2" ID X 15/16" OD (SURVIVOR)

AUTOMATIC SUCTION GUN

NEW STYLE (Pg. 2 of 2)

#	DESCRIPTION	PART #
1.1	GUN, AUTO, LEFT MOUNT, NEW STYLE	1655-920
1.2	GUN, AUTO, CENTER MOUNT, NEW STYLE	1655-930
1.3	GUN, AUTO, RIGHT MOUNT, NEW STYLE	1655-940
1.4	GUN, AUTO, LESS MOUNT, NEW STYLE	1655-950
2.1	ORIFICE, 1/8", NEW STYLE	1349-470
2.2	ORIFICE, 5/32", NEW STYLE	1349-480
2.3	ORIFICE, 3/16", NEW STYLE	1349-490
2.4	ORIFICE, 7/32", NEW STYLE	1349-500
2.5	ORIFICE, 1/4", NEW STYLE	1349-510
3	NUT, LOCKING HEX	1347-2660
4	FITTING, 1/2" HOSE BARB x 3/8" NPT	1219-340
5	RETAINING RING, WIDE SPRAY	1424-480
6.1	NOZZLE, TUNGSTEN CARBIDE, STRAIGHT BORE, WIDE SPRAY GUN INSERT, 3/8" BORE, 7/8" OD x 2-3/4" LENGTH	TL170-6
6.2	NOZZLE, BORON CARBIDE, STRAIGHT BORE, WIDE SPRAY, GUN INSERT, 5/16" BORE, 7/8" OD x 2-3/4" LENGTH	1348-590
6.3	NOZZLE, BORON CARBIDE, STRAIGHT BORE, WIDE SPRAY, GUN INSERT, 3/8" BORE, 7/8" OD x 2-3/4" LENGTH	1348-600
6.4	NOZZLE, BORON CARBIDE, STRAIGHT BORE, WIDE SPRAY, GUN INSERT, 7/16" BORE, 7/8" OD x 2-3/4" LENGTH	1348-610
6.5	NOZZLE, BORON CARBIDE, STRAIGHT BORE, WIDE SPRAY, GUN INSERT, 1/2" BORE, 7/8" OD x 2-3/4" LENGTH	1348-615
7	GUARD, WIDE SPRAY NOZZLE	1661-60

#	DESCRIPTION	PART #
8	O-RING	1423-70
9.1	NOZZLE, CERAMIC, STRAIGHT BORE, GUN INSERT, 5/16" BORE, 7/8" OD x 1-3/8" LENGTH	CL166-5
9.2	NOZZLE, CERAMIC, STRAIGHT BORE, GUN INSERT, 3/8" BORE, 7/8" OD x 1-3/8" LENGTH	CL166-6
9.3	NOZZLE, TUNGSTEN CARBIDE, STRAIGHT BORE, GUN INSERT, 5/16" BORE, 7/8" OD x 1-3/8" LENGTH	TL166-5
9.4	NOZZLE, TUNGSTEN CARBIDE, STRAIGHT BORE, GUN INSERT, 3/8" BORE, 7/8" OD x 1-3/8" LENGTH	TL166-6
9.5	NOZZLE, TUNGSTEN CARBIDE, STRAIGHT BORE, GUN INSERT, 7/16" BORE, 7/8" OD x 1-3/8" LENGTH	TL166-7
9.6	NOZZLE, TUNGSTEN CARBIDE, STRAIGHT BORE, GUN INSERT, 1/2" BORE, 7/8" OD x 1-3/8" LENGTH	TL166-8
9.7	NOZZLE, BORON CARBIDE, STRAIGHT BORE, GUN INSERT, 5/16" BORE, 7/8" OD x 1-3/8" LENGTH	1348-630
9.8	NOZZLE, BORON CARBIDE, STRAIGHT BORE, GUN INSERT, 3/8" BORE, 7/8" OD x 1-3/8" LENGTH	1348-640
9.9	NOZZLE, BORON CARBIDE, STRAIGHT BORE, GUN INSERT, 7/16" BORE, 7/8" OD x 1-3/8" LENGTH	1348-650
9.10	NOZZLE, BORON CARBIDE, STRAIGHT BORE, GUN INSERT, 1/2" BORE, 7/8" OD x 1-3/8" LENGTH	1348-1090
10.1	NUT, NOZZLE HOLDING	1347-1240
10.2	NUT, NOZZLE HOLDING, WIDE SPRAY	1347-1510
11.1	FITTING, 1/2" SWIVEL TO 3/8" BARB	1219-350
11.2	FITTING, 1/2" SWIVEL x 1/2" PUSH LOK	1219-300
15	HOSE, AIR, INSTA-GRIP, BLACK, NOMINAL 1/2" ID, WP 300 PSI, PRICE PER FOOT, SOLD IN 10' INCREMENTS ONLY, REEL SIZE 500'	535-278-016
16.1	HOSE, SUCTION, CLEAR, NOMINAL 1/2" ID x 3/4" OD, PRICE PER FOOT, SOLD IN 10' INCREMENTS ONLY, BOX SIZE 100'	C-210-A1/2
16.2	HOSE, SUCTION, BLACK, NOM. ID 1/2" x 15/16" OD, 2 PLY, PRICE PER FOOT, SOLD IN 10' INCREMENTS ONLY, REEL SIZE 400 FT	112-4710
16.3	SURVIVOR® HOSE, SUCTION, BLACK, NOM. ID 1/2" x 15/16" OD, 2 PLY, PRICE PER FOOT, SOLD IN 10' INCREMENTS, REEL SIZE 400 FT	SUR121516 B