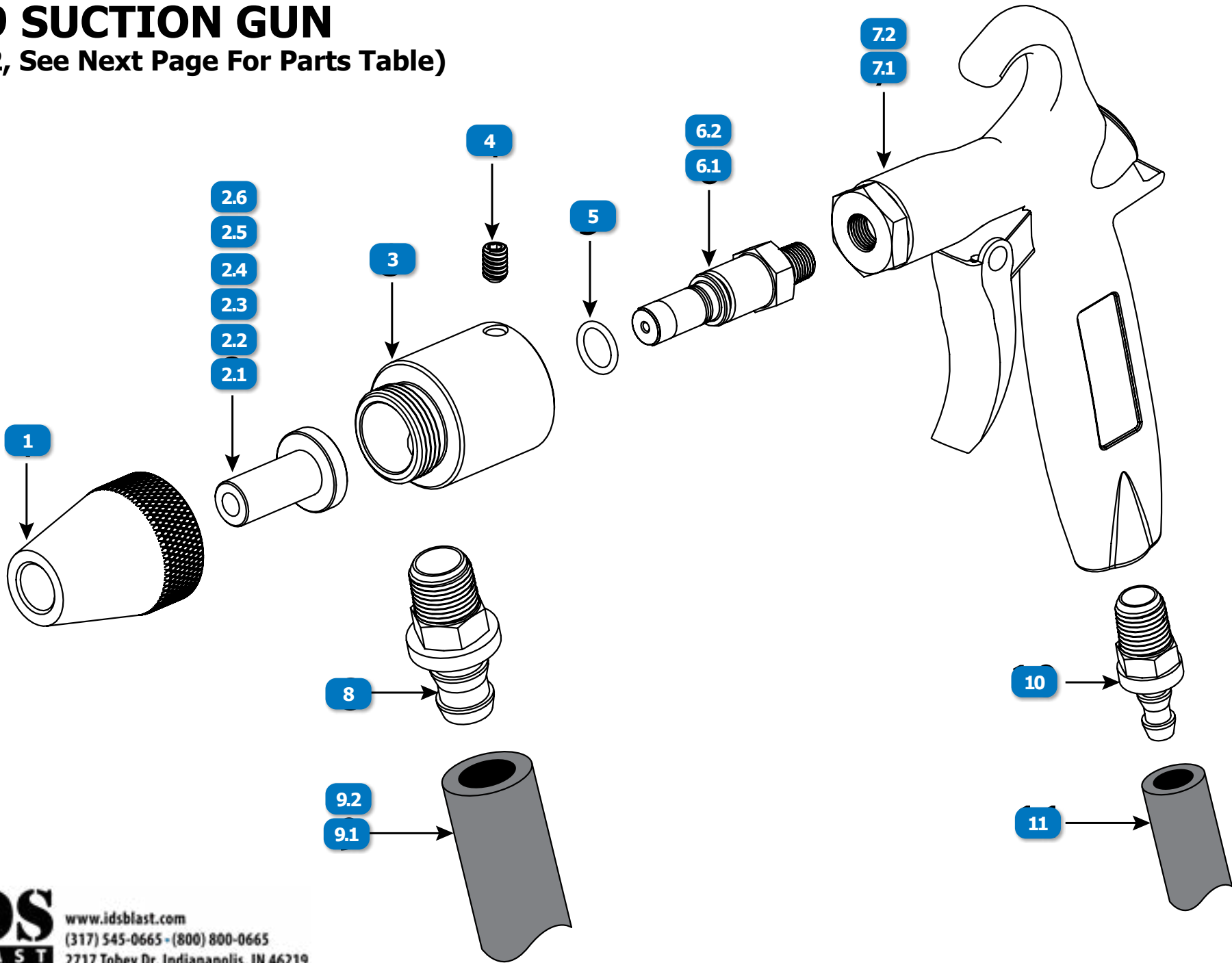


NO. 19 SUCTION GUN







(Pg. 1 of 2, See Next Page For Parts Table)



www.idsblast.com
(317) 545-0665 - (800) 800-0665
2717 Tobey Dr. Indianapolis, IN 46219

NO. 19 SUCTION GUN

(Pg. 2 of 2)

#	DESCRIPTION	PART #
	GUN, #19, 1/4" CERAMIC NOZZLE, W 3/32" AIR JET (12 CFM @ 80 PSI)	505411
	GUN, #19, 5/16" CERAMIC NOZZLE, W 1/8" AIR JET (21 CFM @ 80 PSI)	505422
	GUN, #19, 1/4" TUNGSTEN NOZZLE, W 3/32" AIR JET (12 CFM @ 80 PSI)	505391
	GUN, #19, 5/16" TUNGSTEN NOZZLE, W 1/8" AIR JET (21 CFM @ 80 PSI)	505402
	GUN, #19, 1/4" BORON NOZZLE, W 3/32" AIR JET (12 CFM @ 80 PSI)	505406
	GUN, #19, 5/16" BORON NOZZLE, W 1/8" AIR JET (21 CFM @ 80 PSI)	505417
1	ADAPTOR, NOZZLE (NYLON) (FITS #19 & #4 GUNS)	504901
2.1	NOZZLE, SMALL FLANGED, STRAIGHT BORE, 1/4" BORE, 1-1/4" LENGTH	CL197-4
2.2	NOZZLE, SMALL FLANGED, STRAIGHT BORE, 5/16" BORE, 1-1/4" LENGTH	CL197-5
2.3	NOZZLE, TUNGSTEN CARBIDE, STRAIGHT BORE, GUN INSERT, 1/4" BORE, 7/8" FLANGE x 1-1/4" LENGTH	TL197-4
2.4	NOZZLE, TUNGSTEN CARBIDE, STRAIGHT BORE, GUN INSERT, 5/16" BORE, 7/8" FLANGE x 1-1/4" LENGTH	TL197-5
2.5	NOZZLE, BORON CARBIDE, STRAIGHT BORE, GUN INSERT, 1/4" BORE, 7/8" FLANGE x 1-1/4" LENGTH	501-111
2.6	NOZZLE, BORON CARBIDE, STRAIGHT BORE, GUN INSERT, 5/16" BORE, 7/8" FLANGE x 1-1/4" LENGTH	501-121
3	HEAD, SUCTION (FITS #19 & #4 GUNS)	505331
4	SET SCREW, 1/4-20 x 3/8" SOCKET, CUP POINT SHORT	551052

#	DESCRIPTION	PART #
5	"O" RING, 7/16"	523891
6.1	AIR JET, 3/32" W/O-RING (ORANGE) (12 CFM @ 80PSI)	504821
6.2	AIR JET, 1/8" W/O-RING (YELLOW) (21 CFM @ 80PSI)	504811
7.1	GUN BODY, #19 W/TRIGGER & ADAPTOR	505171
7.2	KIT, REPAIR (FOR #19 GUN)	505191
8	FITTING, 1/2" HOSE BARB x 3/8" NPT	1219-340
9.1	HOSE, SUCTION, CLEAR, NOMINAL 1/2" ID x 3/4" OD, PRICE PER FOOT, SOLD IN 10' INCREMENTS ONLY, BOX SIZE 100'	C-210-A1/2
9.2	HOSE, AIR, INSTA-GRIP, BLACK, NOMINAL 1/2" ID, WP 300 PSI, PRICE PER FOOT, SOLD IN 10' INCREMENTS ONLY, REEL SIZE 500'	535-278-016
10	HOSE, PUSH-ON INSERT 1/4" x 1/4" NPT	888-4200-3020PB
11	HOSE, AIR, INSTA-GRIP, BLACK, NOMINAL 1/4" ID, 250 PSI, PRICE PER FOOT, SOLD IN 10' INCREMENTS ONLY, REEL SIZE 500'	535-278-008



www.idsblast.com
 (317) 545-0665 - (800) 800-0665
 2717 Tobey Dr. Indianapolis, IN 46219