
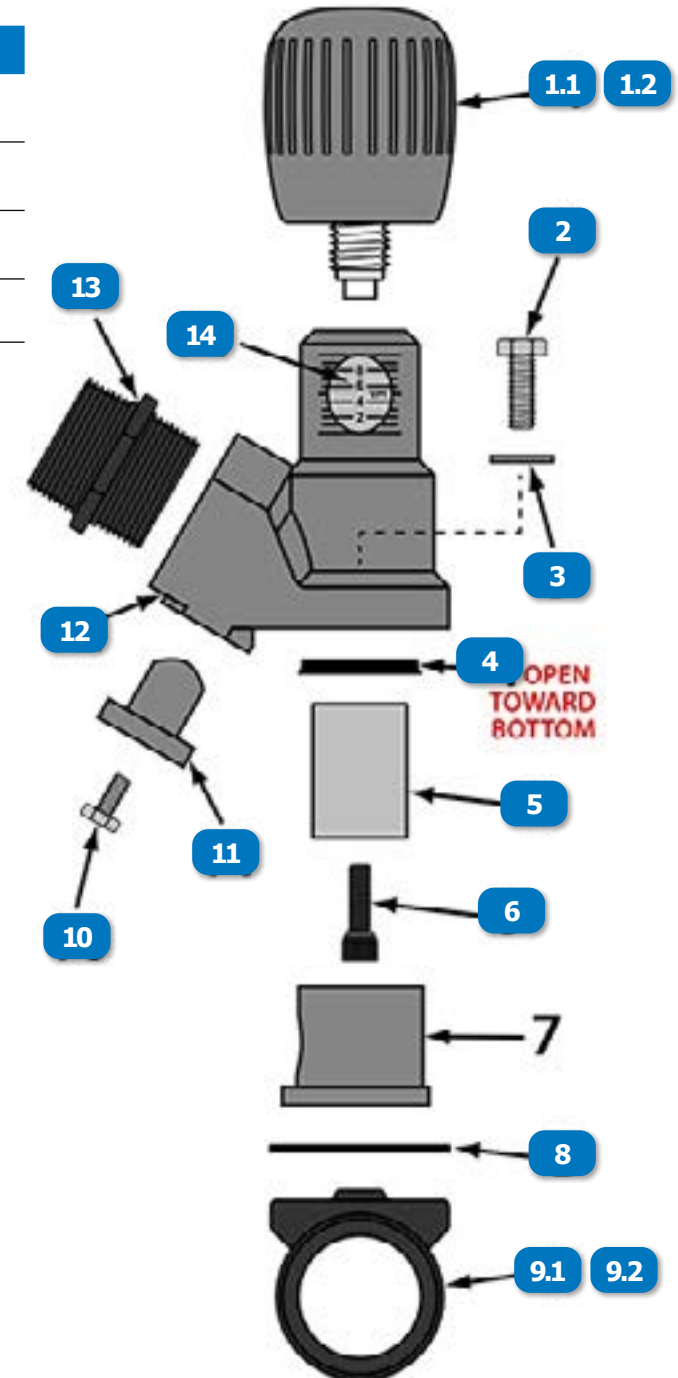


MV3 MICRO VALVE™ 2

#	DESCRIPTION	PART #
	MV3™ (MICROVALVE 3), 1-1/4" COMPLETE ABRASIVE METERING VALVE	2128-107 OEM
	MV3™ (MICROVALVE 3), 1-1/2" COMPLETE ABRASIVE METERING VALVE	2128-108 OEM
	MV3™ (MICROVALVE 3), REPLACEMENT PARTS KIT, INCLUDES #4, 5, 6, 7 & 8 (Original Equipment Mfg)	2128-100-99 OEM
	MV3™ (MICROVALVE 3), REPLACEMENT PARTS KIT, SEALS ONLY, INCLUDES #4, 7 & 8 (Original Equipment Mfg)	2128-100-98 OEM
1.1	MV2®/MV3™, KNOB (Original Equipment Mfg)	2128-000-01 OEM
1.2	MV3™, KNOB DECAL (Original Equipment Mfg)	2128-000-16 OEM
2	MV2®/MV3™ HEX BOLT, 3/8" x 1" LG (Original Equipment Mfg)	7010-507-06 OEM
3	FLAT WASHER 3/8" SAE (10 PACK)	888-7027-50302PB
4	APV, PLUNGER SEAL W/ O-RING, BIG-BORE™	888-2149-50006PB
5	MV2®/MV3™, PLUNGER (Original Equipment Mfg)	2127-000-05 OEM
6	MV2®/MV3™ SOCKET HEAD CAP SCREW, 5/16" x 1" LG (Original Equipment Mfg)	7011-005-06O OEM
8	MV3™, GASKET (4 PACK) (Original Equipment Mfg)	2128-000-15 OEM
9.1	MV3™, BASE, 1-1/4" (1-1/4" MALE x 1-1/2" MALE) (Original Equipment Mfg)	2128-007-10 OEM
9.2	MV3™, BASE, 1-1/2" (1-1/2" MALE x 1-1/2" MALE) (Original Equipment Mfg)	2128-008-10 OEM
10	HEX HEAD CAP SCREW, 1/4" x 1/2" LONG	110120300

#	DESCRIPTION	PART #
11	MV3™, CLEANOUT PLUG (Original Equipment Mfg)	2128-000-18 OEM
12	MV3™, BODY (Original Equipment Mfg)	2128-000-06 OEM
13	MV3™, MEDIA INLET NIPPLE, 1-1/4" (Original Equipment Mfg)	2128-000-20 OEM
14	MV2®/MV3™, ORIFICE INDICATOR DECAL (Original Equipment Mfg)	2128-000-13



www.idsblast.com
 (317) 545-0665 - (800) 800-0665
 2717 Tobey Dr. Indianapolis, IN 46219