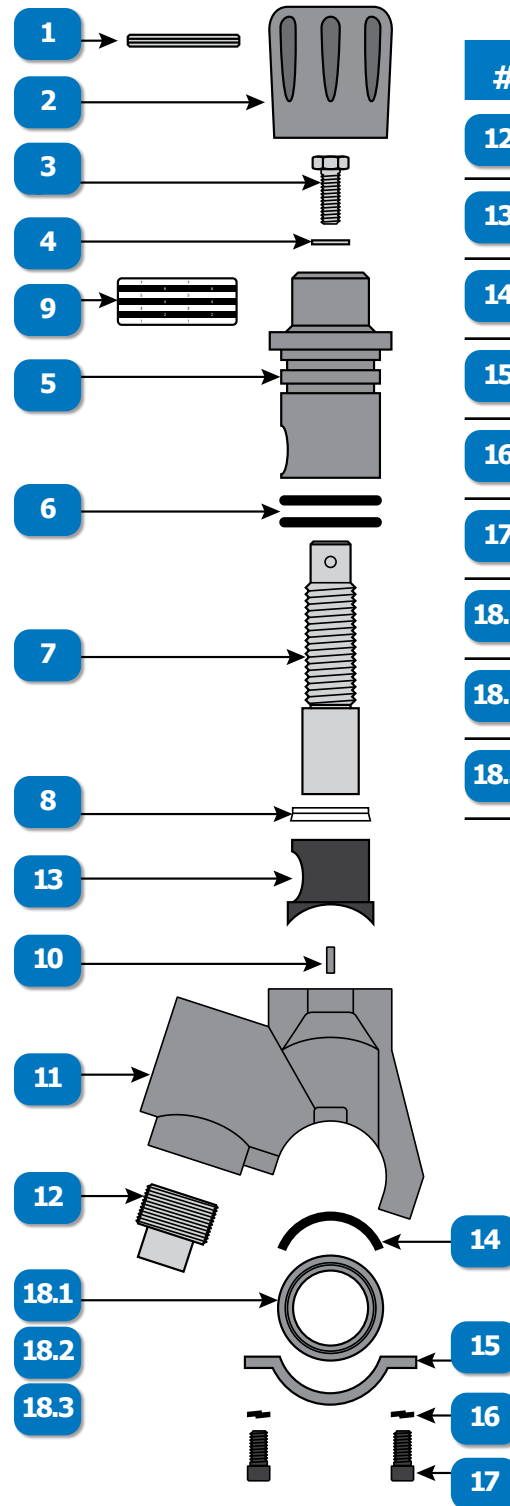


MPV II METERING VALVE

#	DESCRIPTION	PART #
	MPV II ABRASIVE METERING VALVE, 1", URETHANE SLEEVE, 1-1/4" NPT BLAST POT CONNECTION, 1" FEMALE NPT x 1-1/2" MALE NPT NIPPLE	888-2126-106PB
	MPV II ABRASIVE METERING VALVE, 1-1/4", URETHANE SLEEVE, 1-1/4" NPT BLAST POT CONNECTION, 1-1/4" MALE NPT x 1-1/2" MALE NPT NIPPLE	888-2126-107PB
	MPV II ABRASIVE METERING VALVE, 1-1/2", URETHANE SLEEVE, 1-1/4" NPT BLAST POT CONNECTION, 1-1/2" MALE NPT x 1-1/2" MALE NPT NIPPLE	888-2126-108PB
	MPV II, REPAIR KIT W/URETHANE SLEEVE, INCLUDES # 1, (2)6, 7, 8, 13 & 14	888-2126-10099PB
	MPV II, SEAL KIT W/URETHANE SLEEVE, INCLUDES # (2)6, 8, 13 & 14	888-2126-10098PB
1	MPV, MPV II & MPV MINI, ROLL PIN	888-2125-00004PB
2	MPV II, KNOB (BLACK PIRATE BRAND)	888-2126-04700PB
3	MPV II, BOLT (2 REQUIRED)	888-2126-22500PB
4	AMV II & MPV II, FLAT WASHER	102-4420
5	MPV II, TOP BODY W/ABRASIVE ADJUSTMENT INDICATOR LABEL	888-2126-29100PB
6	MPV II, "O"-RING (2 REQUIRED)	888-2126-06600PB
7	MPV, MPV II & MPV MINI, PLUNGER	888-2125-00005PB
8	APV, APV II, MPV, MPV II & MPV MINI, PLUNGER SEAL W/ "O"-RING (CLEAR URETHANE)	888-2148-00006PB
9	MPV II, ABRASIVE ADJUSTMENT INDICATOR LABEL	888-2126-07800PB
10	MPV II, ROLL PIN (3 REQUIRED)	888-2126-30800PB
11	MPV II, BODY	888-2126-28900PB



#	DESCRIPTION	PART #
12	APV II & MPV II, PLUG, PIPE STAINLESS 1"	888-3014-206PB
13	MPV & MPV II, SLEEVE, URETHANE	888-2125-10008PB
14	MPV II, GASKET	888-2126-31300PB
15	MPV II, HALF RING CLAMP	888-2126-29300PB
16	MPV II, LOCK WASHER (2 REQUIRED)	888-2126-11800PB
17	MPV II, BOLT, HALF RING CLAMP (2 REQUIRED)	888-2126-22600PB
18.1	MPV II, PIPE NIPPLE, 1" FEMALE x 1-1/2" MALE	888-2126-00610PB
18.2	MPV II, PIPE NIPPLE, 1-1/4" MALE x 1-1/2" MALE	888-2126-00710PB
18.3	MPV II, PIPE NIPPLE, 1-1/2" MALE x 1-1/2" MALE	888-2126-00810PB



www.idsblast.com
 (317) 545-0665 • (800) 800-0665
 2717 Tobey Dr. Indianapolis, IN 46219