
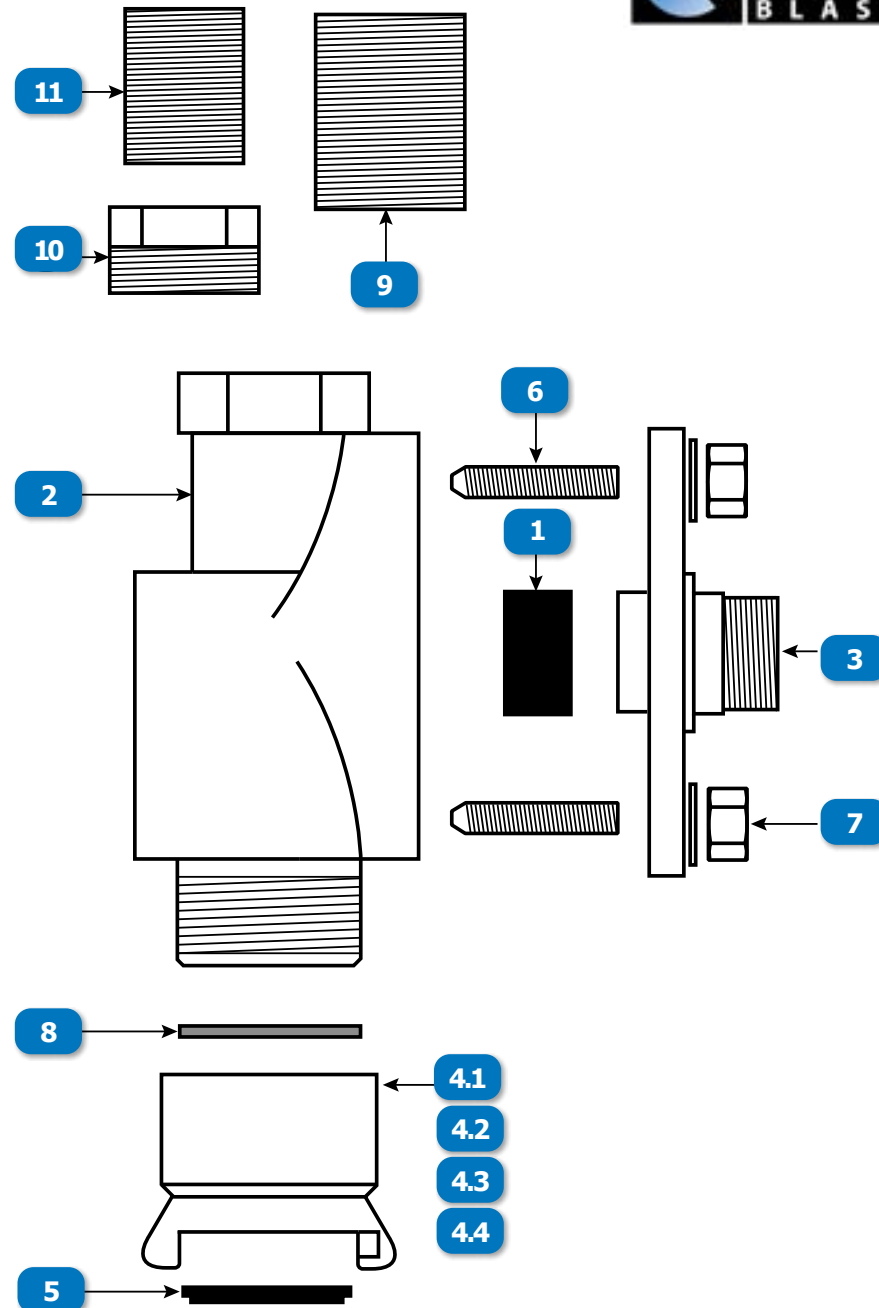


# METERING VALVE

## #100

#	DESCRIPTION	PART #
	VALVE, #100 METERING, COMPLETE, 1-1/2" NPT INLET	MVC-1
1	DONUT WASHER	MV-4
2	BASE, 1-1/2" INLET	MV-5
3	TOP	MV-6
4.1	THRD CPLG, STD NPS, ALUMINUM, 2", (SB-5/P-32), 150 PSI MAX	MV-7
4.2	THD QUICK COUPLING, ALUMINUM, 2", FULL PORT, 150 PSI MAX	AL-SB-4X
4.3	BLAST HOSE COUPLING, #100 METERING, 2" NPS, ALUMINUM, 150 PSI MAX, FITS 1-1/2" BLAST HOSE WITH 2-3/8" OD	MV-12
4.4	BLAST HOSE COUPLING, #100 METERING, 2" NPS, BRASS, 175 PSI MAX, FITS 1-1/2" BLAST HOSE WITH 2-3/8" OD	MV-12B
5	GASKET, STANDARD	SBG-1
6	1/2" STUD	MV-9
7	1/2" NUT	MV-10
8	WASHER	MV-11
9	NIPPLE, TBE, GALV, 1-1/2" x CLOSED	888-3029-10899PB
10	BUSHING, GALV, 1-1/2" x 1-1/4"	888-3026-10807PB
11	NIPPLE, TBE, GALV, 1-1/4" x CLOSED	888-3029-10799PB



www.idsblast.com  
 (317) 545-0665 - (800) 800-0665  
 2717 Tobey Dr. Indianapolis, IN 46219