




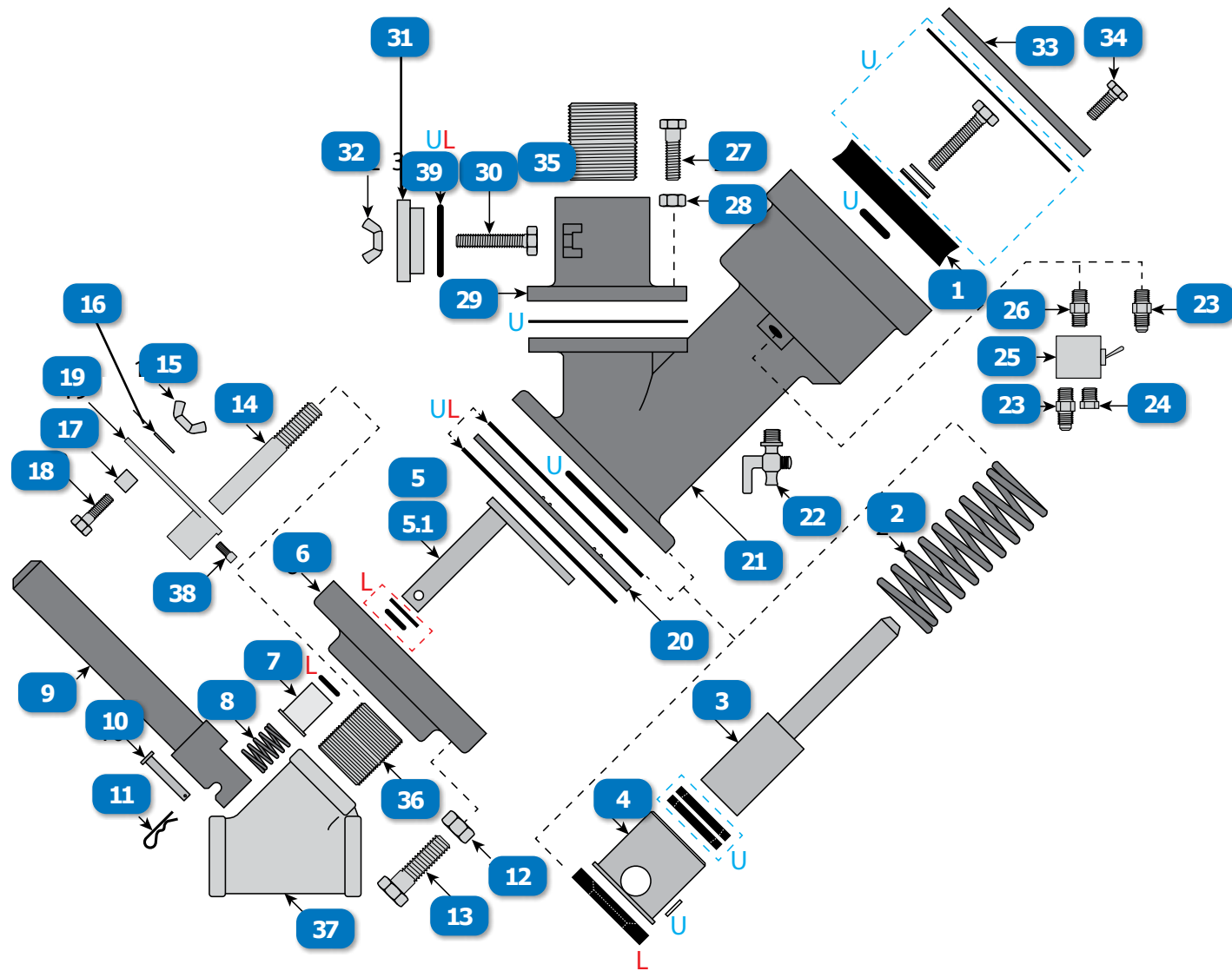


AUTO SENTINEL METERING VALVE

CLEMCO® (Pg. 1 of 3)

| # | DESCRIPTION | PART # |
|--|--|-----------|
|  | AUTO SENTINEL METERING VALVE WITH ATTACHED ACS, FOR ABRASIVES COARSER THAN 50-MESH | 20508 OEM |
|  | AUTO SENTINEL METERING VALVE, STANDARD-USE FOR ABRASIVES COARSER THAN 50-MESH | 20608 OEM |
|  | AUTO SENTINEL METERING VALVE, FINE-MESH FOR ABRASIVES 50-MESH AND FINER | 21439 OEM |
|  | REPAIR KIT, SENTINEL METERING VALVE, UPPER-SEGMENT (INCLUDES ALL ITEMS LABELED WITH U) | 22388 OEM |
|  | REPAIR KIT, SENTINEL METERING VALVE, LOWER-SEGMENT (INCLUDES ALL ITEMS LABELED WITH L) | 22389 OEM |
| 1 | PISTON CUP, SENTINEL METERING VALVE (Original Equipment Manufacturer) | 20515 OEM |
| 2 | SPRING, QUANTUM ACTUATOR / SENTINEL AUTO (Original Equipment Mfg) | 20600 OEM |
| 3 | PISTON, SHUT-OFF, SENTINEL METERING VALVE (Original Equipment Manufacturer) | 20494 OEM |
| 4 | WEAR SLEEVE, SENTINEL METERING VALVE (Original Equipment Manufacturer) | 20495 OEM |
| 5 | METERING PLATE & STEM, COARSER THAN 50-MESH, SENTINEL METERING VALVE | 20499 OEM |
| 5.1 | METERING PLATE & STEM, FINE-MESH, URETHANE, 50-MESH & FINER, SENTINEL METERING VALVE | 21438 OEM |
| 6 | LOWER BODY, SENTINEL METERING VALVE (Original Equipment Manufacturer) | 20511 OEM |
| 7 | PACKING GLAND, SENTINEL METERING VALVE (Original Equipment Manufacturer) | 21021 OEM |
| 8 | AMV / INLET VALVE SPRING | 01982 |
| 9 | HANDLE, HEAVY DUTY, SENTINEL METERING VALVE (Original Equipment Manufacturer) | 20498 OEM |
| 10 | PIN, VALVE HANDLE, SENTINEL METERING VALVE (Original Equipment Manufacturer) | 20246 OEM |
| 11 | HITCH PIN (Original Equipment Manufacturer) | 20245 OEM |
| 12 | NUT, 3/8-NC HEX HEAD (Original Equipment Manufacturer) | 03311 OEM |

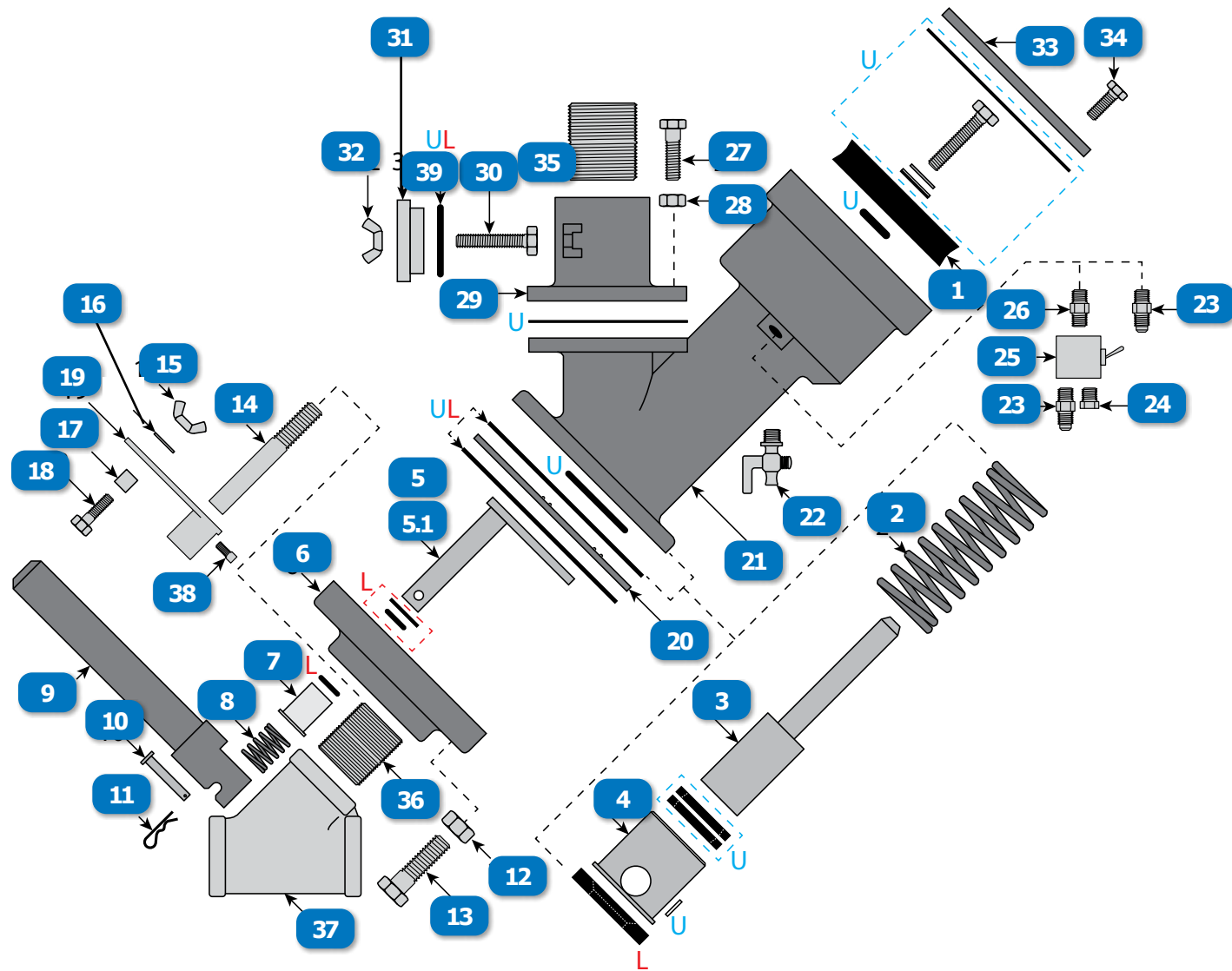


www.idsblast.com
 (317) 545-0665 - (800) 800-0665
 2717 Tobey Dr. Indianapolis, IN 46219

AUTO SENTINEL METERING VALVE

CLEMCO® (Pg. 2 of 3)

| # | DESCRIPTION | PART # |
|----|--|------------------|
| 13 | CAP SCREW, 1/2-NC x 2-1/2" (Original Equipment Manufacturer) | 03457 OEM |
| 14 | STUD, GAUGE UNIT, SENTINEL METERING VALVE (Original Equipment Manufacturer) | 02436 OEM |
| 15 | NUT, 1/4-NC WING (Original Equipment Mfg) | 03113 OEM |
| 16 | FLAT WASHER | 402-0700 |
| 17 | SPACER, HANDLE BOLT, SENTINEL METERING VALVE (Original Equipment Manufacturer) | 02431 OEM |
| 18 | CAP SCREW, 1/4-NC x 1" (Original Equipment Manufacturer) | 03053 OEM |
| 19 | GAUGE UNIT, SENTINEL METERING VALVE (Original Equipment Manufacturer) | 02433 OEM |
| 20 | SEAT PLATE, SENTINEL METERING VALVE (Original Equipment Manufacturer) | 20497 OEM |
| 21 | UPPER BODY, SENTINEL METERING VALVE (Original Equipment Manufacturer) | 20514 OEM |
| 22 | PETCOCK, 1/4" NPT | 01993 |
| 23 | 1/8" NPT ADAPTOR | 460-0719 |
| 24 | VENT, 1/8" | 888-2014-300PB |
| 25 | VALVE, CONTRACTOR, ACS 3-WAY MANUAL, 1/8" | 07658 |
| 26 | NIPPLE, HEX 1/8"MNPT x 1/8" MNPT | 888-3031-30002PB |
| 27 | CAP SCREW, 3/8-NC x 1-1/2" (Original Equipment Manufacturer) | 03267 OEM |
| 28 | NUT, 1/2-NC HEX HEAD (Original Equipment Manufacturer) | 03511 OEM |
| 29 | FLANGED ADAPTOR W/ INSPECTION OPENING, SENTINEL METERING VALVE | 20513 OEM |
| 30 | CAP SCREW, 5/16-NC x 1-1/4" (Original Equipment Manufacturer) | 19509 OEM |

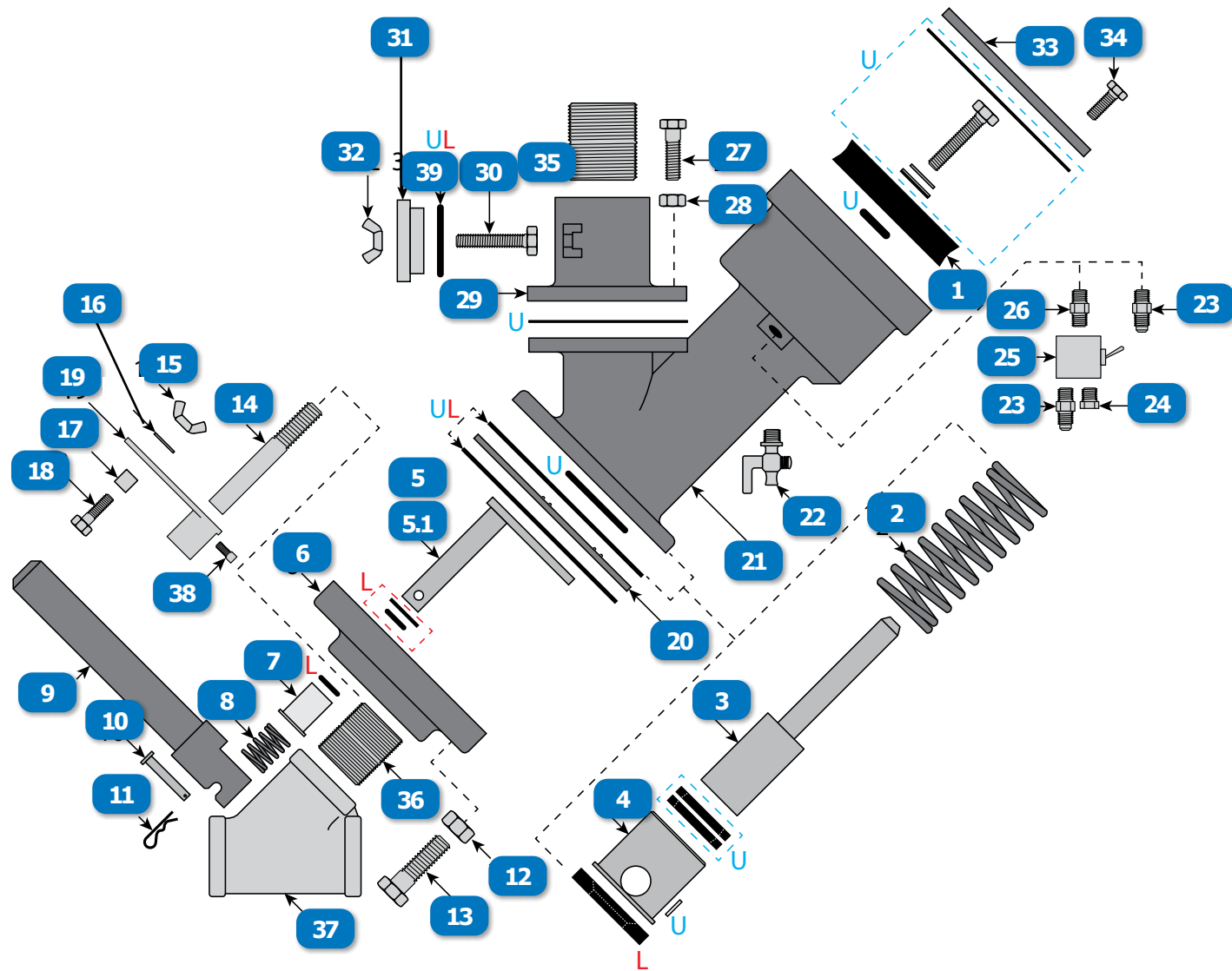


www.idsblast.com
 (317) 545-0665 - (800) 800-0665
 2717 Tobey Dr. Indianapolis, IN 46219

AUTO SENTINEL METERING VALVE

CLEMCO® (Pg. 3 of 3)

| # | DESCRIPTION | PART # |
|----|---|------------------|
| 31 | INSPECTION PLATE (Original Equipment Manufacturer) | 02440 OEM |
| 32 | NUT, 5/16-NC WING (Original Equipment Manufacturer) | 03213 OEM |
| 33 | CYLINDER CAP, SENTINEL METERING VALVE (Original Equipment Manufacturer) | 20512 OEM |
| 34 | CAP SCREW, 5/16-NC x 3/4" (Original Equipment Manufacturer) | 03151 OEM |
| 35 | NIPPLE, TBE, SCHEDULE 80, GALV, 1-1/2" x CLOSE | 888-3028-10899PB |
| 36 | NIPPLE, TBE, SCHEDULE 80, GALV, 1-1/4" x CLOSE | 888-3028-10799PB |
| 37 | WYE, GALV, 1-1/4" | 888-3012-107PB |
| 38 | SET SCREW, 1/4-NC SQ. HD. (Original Equipment Manufacturer) | 03080 OEM |
| 39 | INSPECTION PLATE O-RING | 01990 |



www.idsblast.com
 (317) 545-0665 - (800) 800-0665
 2717 Tobey Dr. Indianapolis, IN 46219