
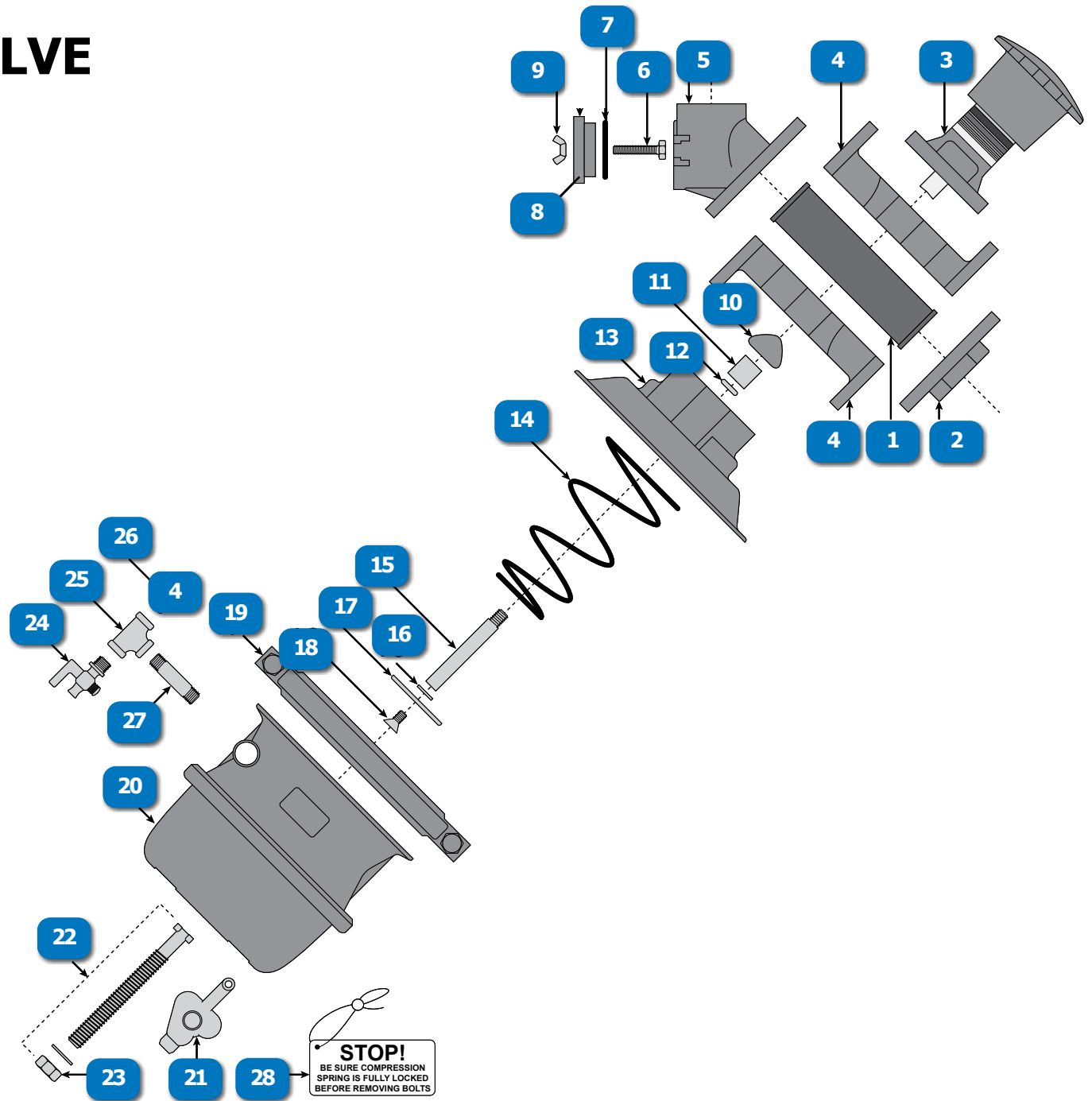


PVR PINCH-TUBE GRIT VALVE

CLEMCO® (Pg. 1 of 2)

#	DESCRIPTION	PART #
	PVR PINCH-TUBE GRIT VALVE (Original Equipment Manufacturer)	04319 OEM
1	TUBE, PINCH VALVE, 1" ID FOR GRIT VALVES (Original Equipment Manufacturer)	04635 OEM
2	FLANGED ADAPTOR (Original Equipment Manufacturer)	05673 OEM
3	METERING KNOB ASSEMBLY (Original Equipment Manufacturer)	05072 OEM
4	PINCH VALVE BODY - 2 REQUIRED (Original Equipment Manufacturer)	05677 OEM
5	45° ADAPTOR PLATE (Original Equipment Manufacturer)	05672 OEM
6	CAP SCREW, 5/16-NC x 1" (Original Equipment Manufacturer)	03152 OEM
7	INSPECTION PLATE O-RING	01990
8	INSPECTION PLATE (Original Equipment Manufacturer)	02440 OEM
9	NUT, 5/16-NC WING (Original Equipment Manufacturer)	03213 OEM
10	PLUNGER, ACTUATOR (Original Equipment Manufacturer)	05676 OEM
11	BUSHING, ACTUATOR BODY (Original Equipment Manufacturer)	05684 OEM
12	SEAL, ACTUATOR BODY (Original Equipment Manufacturer)	05685 OEM
13	ACTUATOR BODY, INCLUDES BUSHING & SEAL (Original Equipment Manufacturer)	05678 OEM
14	RETURN SPRING (Original Equipment Manufacturer)	05686 OEM

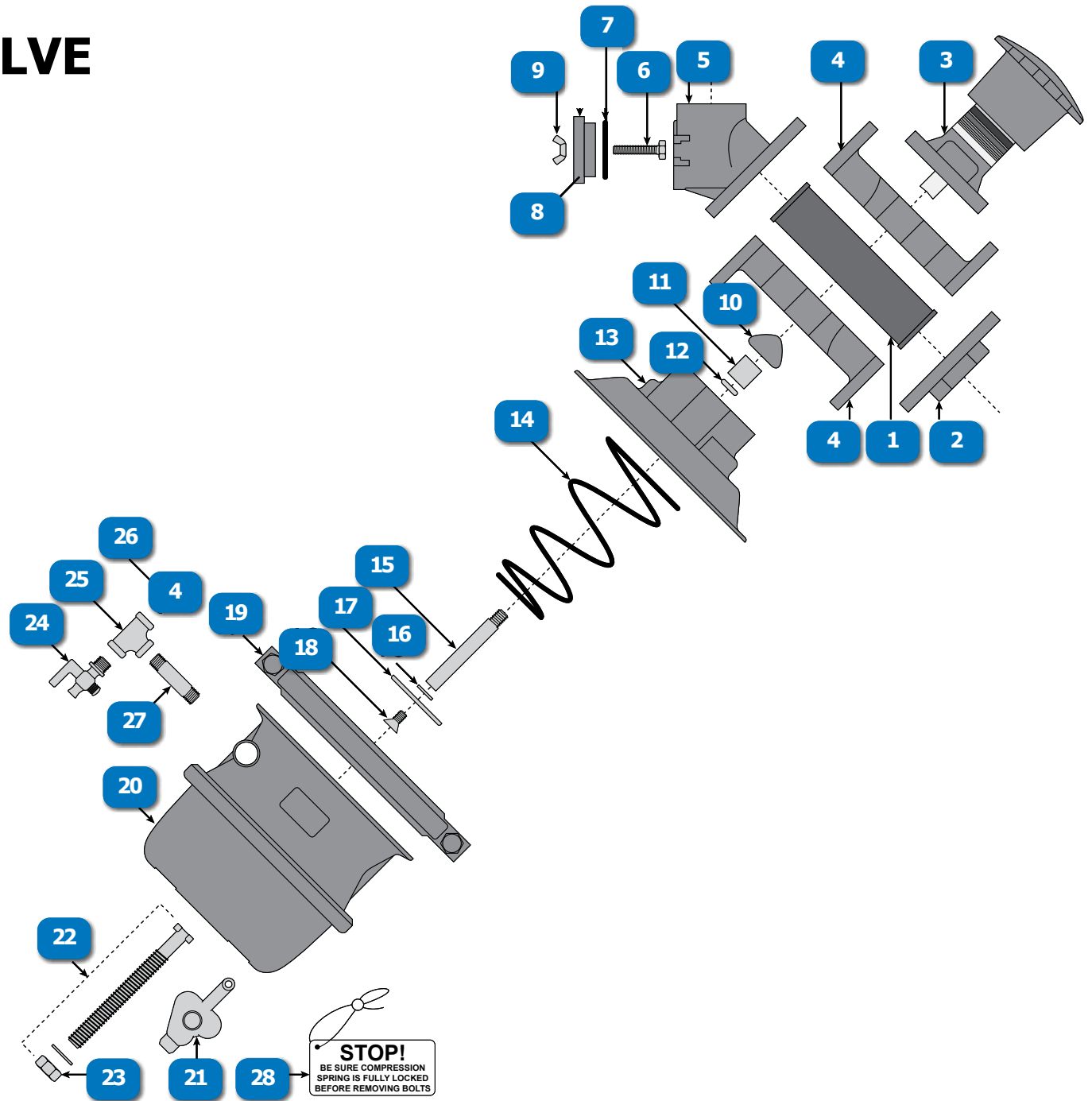


www.idsblast.com
 (317) 545-0665 - (800) 800-0665
 2717 Tobey Dr. Indianapolis, IN 46219

PVR PINCH-TUBE GRIT VALVE

CLEMCO® (Pg. 2 of 2)

#	DESCRIPTION	PART #
15	SHAFT, ACTUATOR (Original Equipment Manufacturer)	05670 OEM
16	FLAT WASHER, S/S (Original Equipment Manufacturer)	05694 OEM
17	PLATE, RETURN SPRING (Original Equipment Manufacturer)	05687 OEM
18	SCREW, FLAT HEAD, 1/4-NC x 5/8" (Original Equipment Manufacturer)	03090 OEM
19	CLAMP ASSEMBLY KIT (Original Equipment Manufacturer)	20660 OEM
20	SPRING CHAMBER (Original Equipment Manufacturer)	05663 OEM
21	PLUG, LOCK-STUD PORT (Original Equipment Manufacturer)	05683 OEM
22	LOCK-STUD ASSEMBLY, INCLUDES NUT & WASHER (Original Equipment Manufacturer)	05691 OEM
23	LOCK-STUD NUT (Original Equipment Manufacturer)	07628 OEM
24	PETCOCK, 1/4" NPT	01993
25	TEE, GALV, 1/4"	888-3011-102PB
26	ADAPTOR, 1/4" NPT (Original Equipment Manufacturer)	02494 OEM
27	NIPPLE, TBE, GALV, 1/4" x 2"	888-3029-10209PB
28	WARNING LABEL AND DECAL KIT (Original Equipment Manufacturer)	20661 OEM



www.idsblast.com
 (317) 545-0665 - (800) 800-0665
 2717 Tobey Dr. Indianapolis, IN 46219