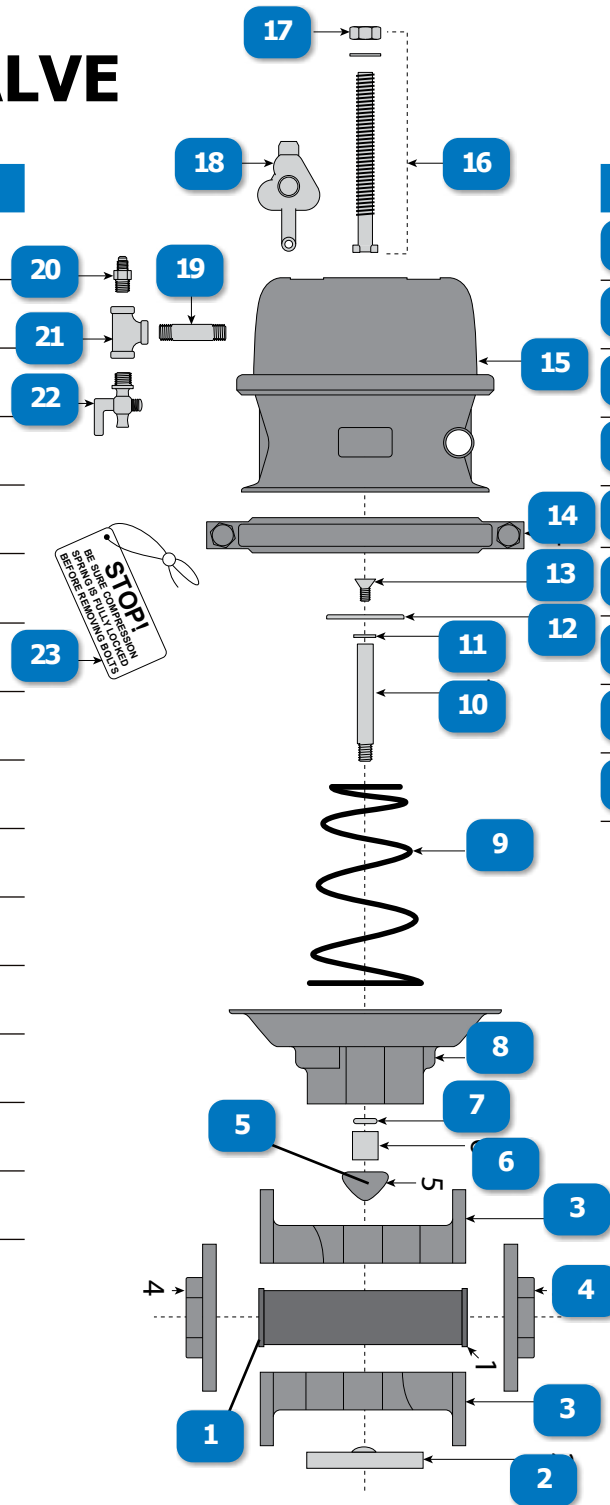


PVR PINCH-TUBE AIR VALVE

CLEMCO®

| # | DESCRIPTION | PART # |
|----|--|-----------|
| | PVR PINCH-TUBE AIR VALVE (Original Equipment Manufacturer) | 04320 OEM |
| 1 | TUBE, PINCH VALVE, 1-1/4" ID FOR AIR VALVE (Original Equipment Manufacturer) | 07730 OEM |
| 2 | COVER PLATE (Original Equipment Manufacturer) | 05674 OEM |
| 3 | PINCH VALVE BODY - 2 REQUIRED (Original Equipment Manufacturer) | 05677 OEM |
| 4 | FLANGED ADAPTOR (Original Equipment Manufacturer) | 05673 OEM |
| 5 | PLUNGER, ACTUATOR (Original Equipment Manufacturer) | 05676 OEM |
| 6 | BUSHING, ACTUATOR BODY (Original Equipment Manufacturer) | 05684 OEM |
| 7 | SEAL, ACTUATOR BODY (Original Equipment Manufacturer) | 05685 OEM |
| 8 | ACTUATOR BODY, INCLUDES BUSHING & SEAL (Original Equipment Manufacturer) | 05678 OEM |
| 9 | RETURN SPRING (Original Equipment Manufacturer) | 05686 OEM |
| 10 | SHAFT, ACTUATOR (Original Equipment Manufacturer) | 05670 OEM |
| 11 | FLAT WASHER, S/S (Original Equipment Manufacturer) | 05694 OEM |
| 12 | PLATE, RETURN SPRING (Original Equipment Manufacturer) | 05687 OEM |
| 13 | SCREW, FLAT HEAD, 1/4-NC x 5/8" (Original Equipment Manufacturer) | 03090 OEM |
| 14 | CLAMP ASSEMBLY KIT (Original Equipment Manufacturer) | 20660 OEM |



| # | DESCRIPTION | PART # |
|----|---|------------------|
| 15 | SPRING CHAMBER (Original Equipment Manufacturer) | 05663 OEM |
| 16 | LOCK-STUD ASSEMBLY, INCLUDES NUT & WASHER (Original Equipment Manufacturer) | 05691 OEM |
| 17 | LOCK-STUD NUT (Original Equipment Manufacturer) | 07628 OEM |
| 18 | PLUG, LOCK-STUD PORT (Original Equipment Manufacturer) | 05683 OEM |
| 19 | NIPPLE, TBE, GALV, 1/4" x 2" | 888-3029-10209PB |
| 20 | ADAPTOR, 1/4" NPT (Original Equipment Manufacturer) | 02494 OEM |
| 21 | TEE, GALV, 1/4" | 888-3011-102PB |
| 22 | PETCOCK, 1/4" NPT | 01993 |
| 23 | WARNING LABEL AND DECAL KIT (Original Equipment Manufacturer) | 20661 OEM |



www.idsblast.com
 (317) 545-0665 - (800) 800-0665
 2717 Tobey Dr. Indianapolis, IN 46219