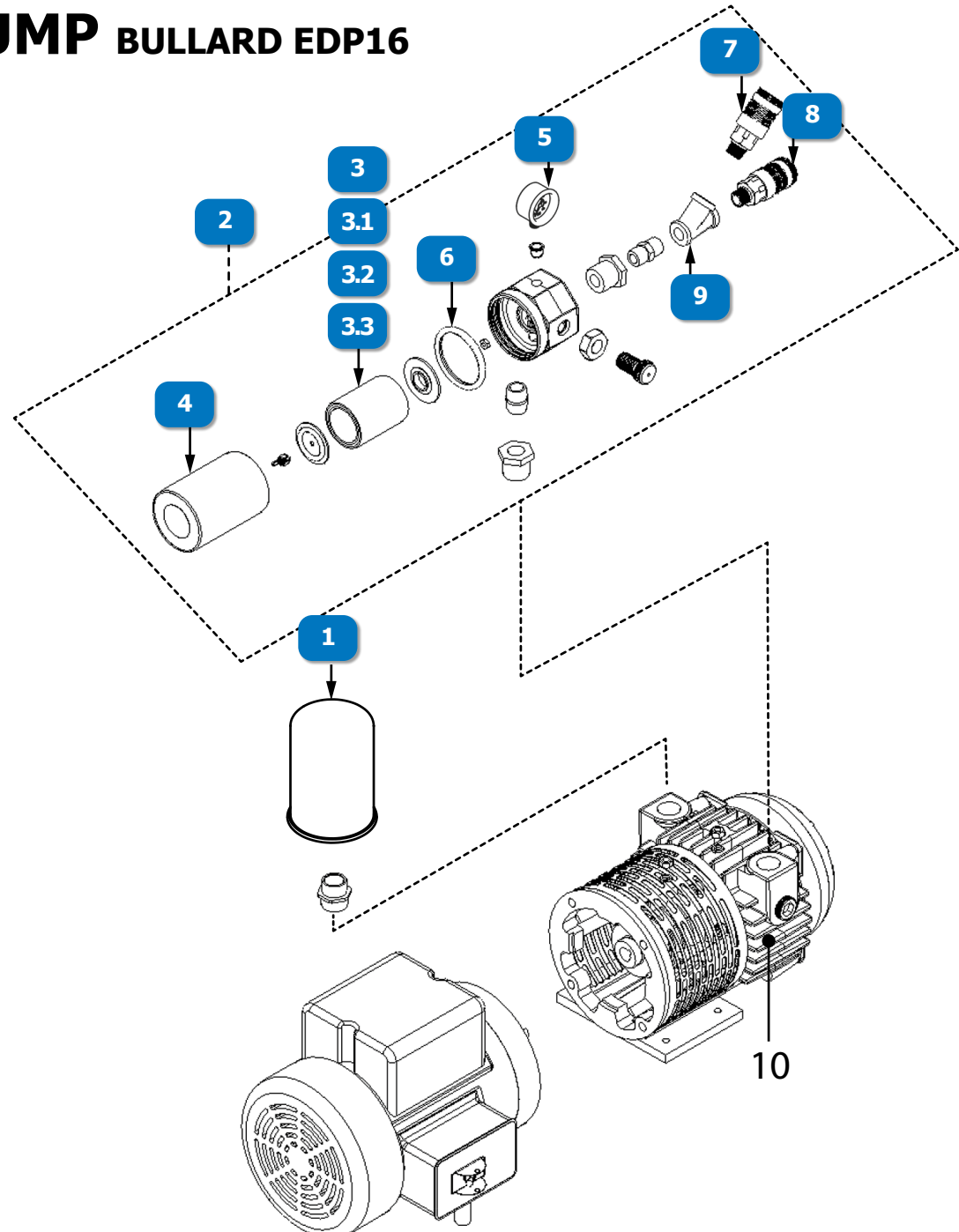


ELECTRIC DRIVEN FREE AIR PUMP BULLARD EDP16

#	DESCRIPTION	PART #
	BULLARD EDP16, ELECTRIC DRIVEN FREE AIR PUMP	EDP16TE
	BULLARD EDP16, ELECTRIC DRIVEN FREE AIR PUMP, HAZARDOUS-DUTY MOTOR	EDP16HAZ
1	BULLARD, FREE AIR PUMP INLET FILTER (CHANGE EVERY 500 HOURS OR AS NEEDED)	23611
2	BULLARD EDP16, FREE AIR PUMP INLINE FILTER ASSEMBLY, 1/2" INDUSTRIAL INTERCHANGE QUICK-DISCONNECT COUPLER, 3/8" NPT	INLINE16
3	BULLARD, FREE AIR PUMP OUTLET FILTER, CARBOFINE (CHANGE EVERY 200 HOURS OR AS REQUIRED)	S17101
3.1	BULLARD, FREE AIR PUMP OUTLET FILTER JAR	244852
3.2	BULLARD FREE AIR PUMP PRESSURE GAUGE, 0-30 PSI	S19683
3.3	BULLARD, FREE AIR PUMP OUTLET FILTER ASSEMBLY O-RING	263552
4	BULLARD, FREE AIR PUMP 1/2" INDUSTRIAL INTERCHANGE QUICK-DISCONNECT COUPLER, 3/8" NPT THREAD, SHUT-OFF (RED BAND)	S16191
5	BULLARD, FREE AIR PUMP 1/2" INDUSTRIAL INTERCHANGE QUICK-DISCONNECT COUPLER, 3/8" NPT THREAD, FLOW-THROUGH (GREEN BAND)	S16481
6	BULLARD, FREE AIR PUMP QUICK-DISCONNECT COUPLER 1/2" INDUSTRIAL INTERCHANGE SPLITTER	V24
7	BULLARD, FREE AIR PUMP QUICK-DISCONNECT COUPLER ADAPTOR, 1/2" INDUSTRIAL INTERCHANGE, (2) 3/8" FEMALE NPT	V22
8	BULLARD, FREE AIR PUMP QUICK-DISCONNECT COUPLER ADAPTOR, 1/2" INDUSTRIAL INTERCHANGE, 3/8" FEMALE NPT	V23
9	BULLARD EDP16/ADP20 FREE AIR PUMP CARBON VANE KIT	VANE1620



www.idsblast.com
 (317) 545-0665 • (800) 800-0665
 2717 Tobey Dr. Indianapolis, IN 46219