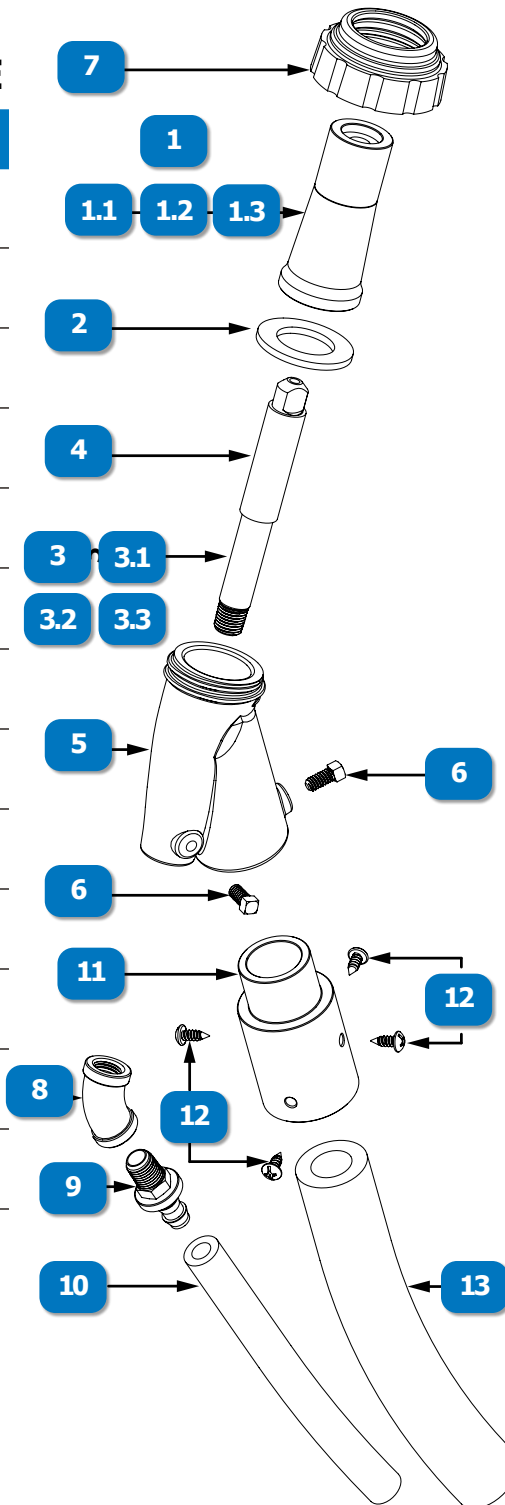


# SUCTION GUN RUEMELIN B STYLE

#	DESCRIPTION	PART #
	NOZZLE COUPLING, BIG GUN	10-360
<b>1</b>	NOZZLE, CERAMIC, MEDIUM TAPERED CONE, STRAIGHT BORE, 3/8" BORE, 2-13/16" LENGTH	10-367
<b>1.1</b>	NOZZLE, CERAMIC, MEDIUM TAPERED CONE, STRAIGHT BORE, 1/2" BORE, 2-13/16" LENGTH	10-368
<b>1.2</b>	NOZZLE, BORON CARBIDE, MEDIUM TAPERED CONE, STRAIGHT BORE, 3/8" BORE, 3" LENGTH	10-374
<b>1.3</b>	NOZZLE, BORON CARBIDE, MEDIUM TAPERED CONE, STRAIGHT BORE, 1/2" BORE, 3" LENGTH	10-375
<b>2</b>	HOSE, SWIVEL GASKET, 1-1/4"	888-4205-10799PB
<b>3</b>	AIR JET, 1/8" ORIFICE, B STYLE SUCTION GUN	10-378
<b>3.1</b>	AIR JET, 3/16" ORIFICE, B STYLE SUCTION GUN	10-379
<b>3.2</b>	AIR JET, 7/32" ORIFICE, B STYLE SUCTION GUN	10-380
<b>3.3</b>	AIR JET, 1/4" ORIFICE, B STYLE SUCTION GUN	10-381
<b>4</b>	SLEEVE, RUBBER, B STYLE SUCTION GUN	10-365
<b>5</b>	GUN BODY, B STYLE SUCTION GUN, BRASS	10-361
<b>6</b>	1/4-20 SET SCREW x 1/2" L, B STYLE SUCTION GUN	11-890



#	DESCRIPTION	PART #
<b>7</b>	NOZZLE NUT, B STYLE SUCTION GUN, BRASS	10-363
<b>8</b>	ELBOW, 45*, GALV, 1/4" NPT	888-3004-102PB
<b>9</b>	HOSE, PUSH-ON INSERT 3/8" x 1/4" NPT	888-4200-30302PB
<b>10</b>	HOSE, AIR, INSTA-GRIP, BLACK, NOMINAL 3/8" ID, WP 300PSI	535-278-012
<b>11</b>	ADAPTOR, SLEEVE, SUCTION HOSE, B STYLE SUCTION GUN	10-326
<b>12</b>	SCREW, COUPLING	11-730
<b>13</b>	HOSE, SUCTION, BLACK, NOMINAL 3/4" ID x 1-5/16" OD, 2 PLY, PRICE PER FOOT, SOLD IN 10' INCREMENTS ONLY, REEL SIZE 400'	10-920



www.idsblast.com  
 (317) 545-0665 • (800) 800-0665  
 2717 Tobey Dr. Indianapolis, IN 46219