

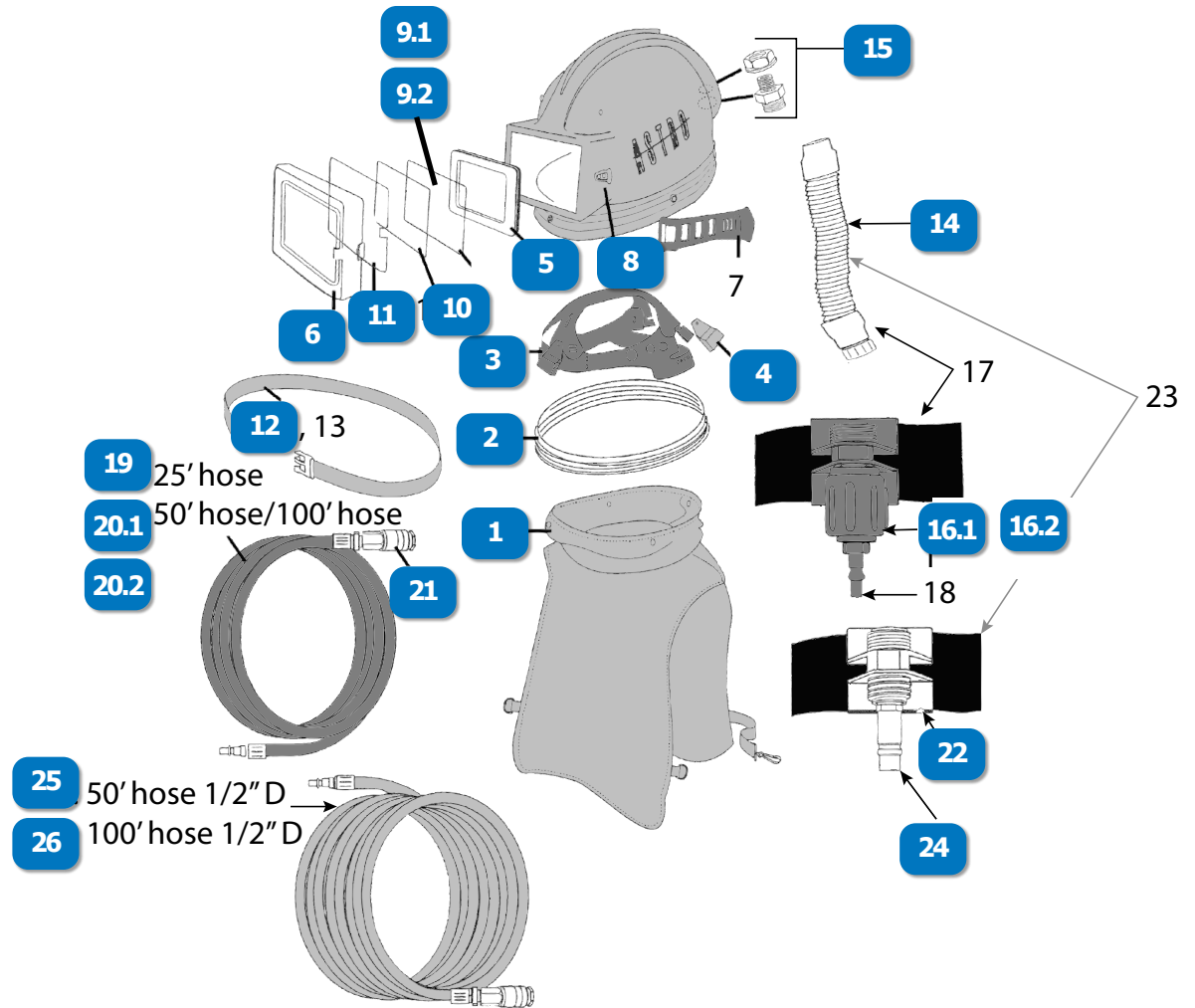


RESPIRATOR RPB® ASTRO™ (Pg. 1 of 2)

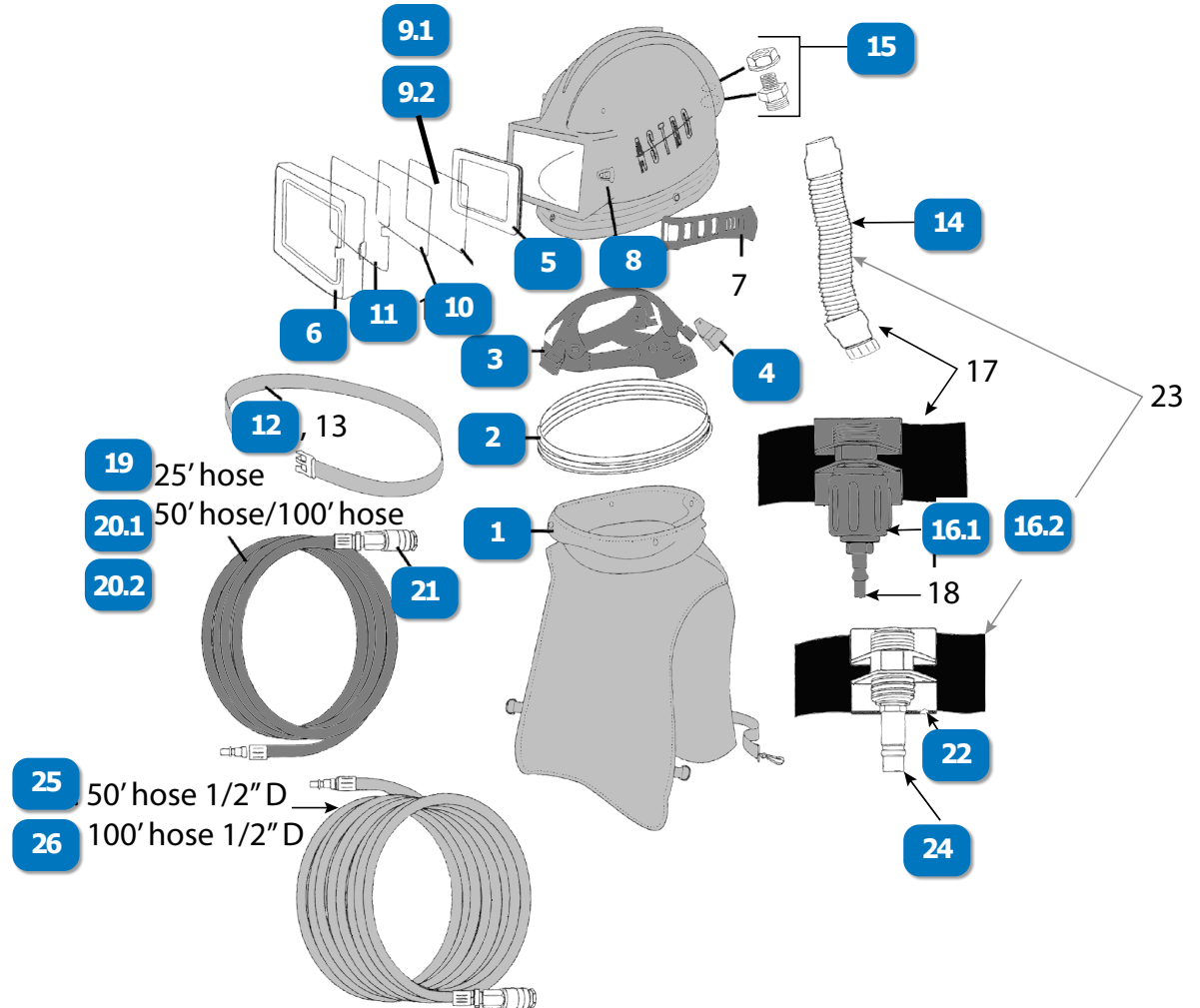
#	DESCRIPTION	PART #
	RPB® ASTRO™ RESPIRATOR, (NIOSH APPROVAL NO: TC-19C-417 TYPE CE)	02-800
	DO-RAG	05-613
1	RPB® ASTRO, CAPE, NYLON, GRAY	02-813
2	CAPE COVER BAND	02-812
3	HEAD HARNESS	02-809
4	SUSPENSION CLIPS 4 PACK	02-808
5	WINDOW GASKET SEAL	02-807
6	VISOR C/W STRAP AND SCREWS	02-804
8	CLEAT AND SCREWS	02-806
9.1	INNER LENS, 10 PACK, (ANSI Z87.1-2003), FOR RPB® ASTRO™	02-810
9.2	INNER LENS, TINTED, 10 PACK, (ANSI Z87.1-2003), FOR RPB® ASTRO™	02-810-T
10	OUTER LENS, 0.015, 50 PACK, FOR RPB® ASTRO™	02-811-015
11	TEAR OFF LENS, 50 PACK, FOR RPB® ASTRO™	02-816
12	BELT W/BUCKLE	NV-2022



www.idsblast.com
 (317) 545-0665 • (800) 800-0665
 2717 Tobey Dr. Indianapolis, IN 46219

RESPIRATOR RPB® ASTRO™ (Pg. 2 of 2)

#	DESCRIPTION	PART #
14	BREATHING TUBE, ASTRO & NOVA 2000, NEW STYLE (REPLACES RPB PN NV2021)	NV-2021
15	AIR INLET ASSEMBLY, ASTRO & NOVA 2000 (FOR CONNECTING NEW STYLE TUBE TO HELMET)	03-035
16.1	FLOW CONTROL VALVE ASSEMBLY W/BELT	NV-2016
16.2	RPB® C40 RESPIRATOR CLIMATE CONTROL DEVICE, COOLING/HEATING, ADJUSTABLE, W/BSP THREAD & BELT	03-501
19	RPB® 25' BREATHING AIR SUPPLY HOSE, 3/8" ID, 1/4" QUICK RELEASE FITTINGS	NV-2028
20.1	RPB® 50' BREATHING AIR SUPPLY HOSE, 3/8" ID, 1/4" QUICK RELEASE FITTINGS	NV-2029
20.2	RPB® 100' BREATHING AIR SUPPLY HOSE, 3/8" ID, 1/4" QUICK RELEASE FITTINGS	NV-2027
21	RPB® 1/4" QUICK RELEASE COUPLER, 1/4" NPT FEMALE THREAD	NV-2025
22	CONSTANT FLOW VALVE ASSEMBLY, 1/2", LOW PRESSURE	03-106
24	RPB® 1/2" PLUG, 3/8" NPT MALE THREAD	NV-2034
25	RPB® 50' BREATHING AIR SUPPLY HOSE, 1/2" ID, 1/2" QUICK RELEASE FITTINGS (FOR AMBIENT AIR PUMP/LOW PRESSURE APPLICATIONS)	NV-2035
26	RPB® 100' BREATHING AIR SUPPLY HOSE, 1/2" ID, 1/2" QUICK RELEASE FITTINGS (FOR AMBIENT AIR PUMP/LOW PRESSURE APPLICATIONS)	NV-2036



www.idsblast.com
 (317) 545-0665 • (800) 800-0665
 2717 Tobey Dr. Indianapolis, IN 46219