





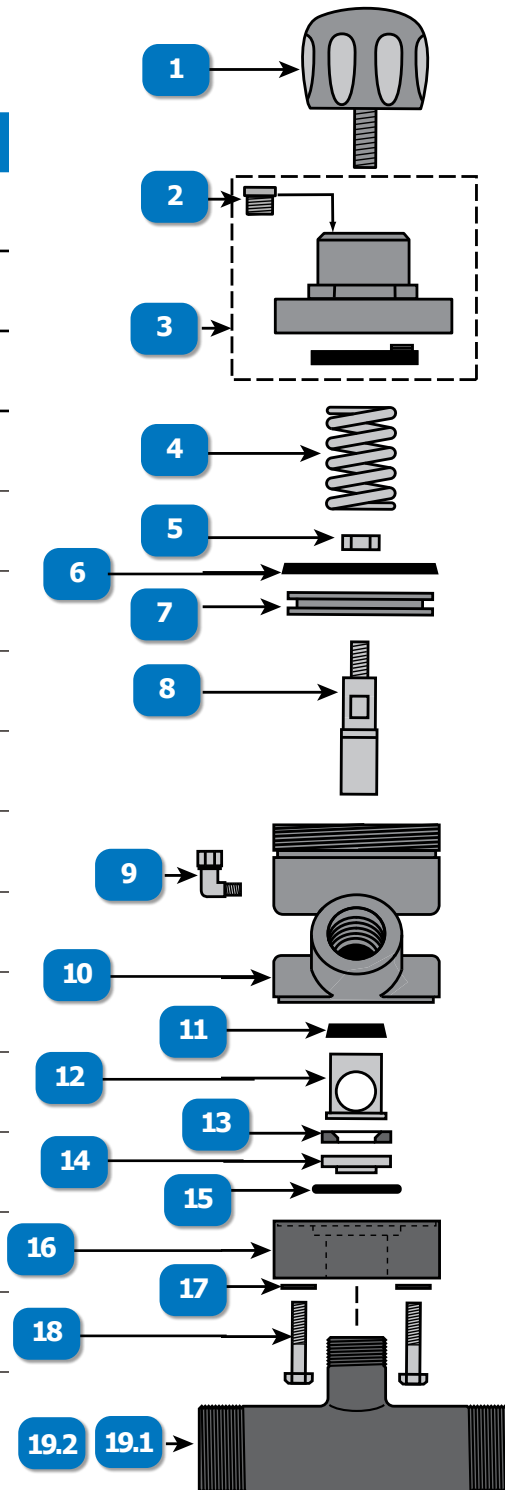


# APV BIG-BORE™

#	DESCRIPTION	PART #
	APV BIG-BORE™ METERING VALVE W/ TUNGSTEN CARBIDE SLEEVE	888-2149-500PB
	APV BIG-BORE™ METERING VALVE, 1-1/2", W/TUNGSTEN CARBIDE SLEEVE	888-2149-508PB
	APV BIG-BORE™ METERING VALVE, 2", W/ TUNGSTEN CARBIDE SLEEVE	888-2149-509PB
	APV BIG-BORE™, REPAIR KIT W/TC SLEEVE, INCLUDES # 6, 8, 11, 12, 13, 14 & 15	888-2149-50099PB
	APV BIG-BORE™, SEAL KIT W/TC SLEEVE, INCLUDES # 6, 11, 13, & 15	888-2149-50098PB
	APV WRENCH, FITS APV/APVII CAPS & HANDWAY NUT	MP01035
<b>1</b>	APV, KNOB	888-2149-00001PB
<b>2</b>	VENT, 1/8"	888-2014-300PB
<b>3</b>	APV & APV II, CAP ASSEMBLY	888-2148-00002PB
<b>4</b>	APV, SPRING, BIG-BORE™ (GRAY/BLUE)	888-2149-50003PB
<b>5</b>	APV & TV2, NUT	888-2149-00008PB
<b>6</b>	APV, APV II, & T2V PISTON SEAL (GREEN URETHANE)	888-2148-00004PB
<b>7</b>	APV, PISTON, BIG-BORE™	888-2149-50005PB
<b>8</b>	APV, TUNGSTEN CARBIDE, PLUNGER, BIG-BORE™	888-2149-50007PB
<b>9</b>	SWIVEL 90*, 1/8"MNPT X 1/8"F	888-4203-50000PB



#	DESCRIPTION	PART #
<b>10</b>	APV, CYLINDER, BIG-BORE™	888-2149-50009PB
<b>11</b>	APV, PLUNGER SEAL W/ O-RING, BIG-BORE™	888-2149-50006PB
<b>12</b>	APV, TUNGSTEN CARBIDE SLEEVE, BIG-BORE™	888-2149-50013PB
<b>13</b>	APV, URETHANE SEAT, BIG-BORE™ (HEAVY DUTY BLUE)	888-2149-50015PB
<b>14</b>	APV, STAINLESS STEEL INSERT, BIG-BORE™	888-2149-50014PB
<b>15</b>	APV, O-RING FOR METERING VALVE INSERT, BIG-BORE™	888-2149-50018PB
<b>16</b>	APV, BASE, BIG-BORE™	888-2149-50011PB
<b>17</b>	FLAT WASHER 3/8" SAE (10 PACK)	888-7027-50302PB
<b>18</b>	BOLT, 3/8" UNC x 2-1/4"	888-7010-50754PB
<b>19.1</b>	APV & APV II, PIPE NIPPLE, 1-1/2" MALE x 1-1/2" MALE FOR STRAIGHT-DOWN & BIG-BORE™ METERING VALVES	888-2149-50816PB
<b>19.2</b>	APV & APV II, PIPE NIPPLE, 2" MALE x 2" MALE FOR STRAIGHT-DOWN & BIG-BORE™ METERING VALVES	888-2149-00915PB