


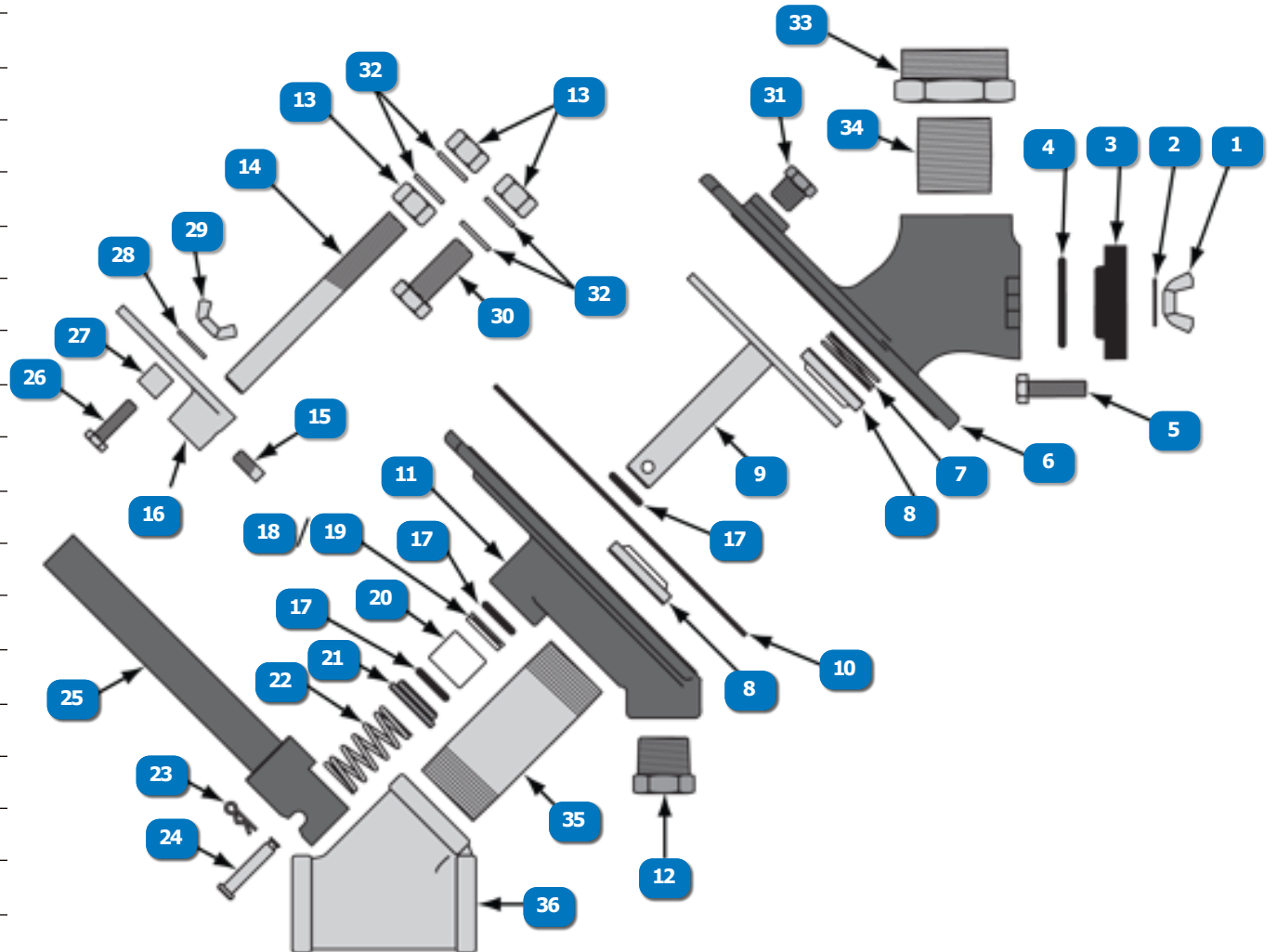


AMVII (Pg. 1 of 2)

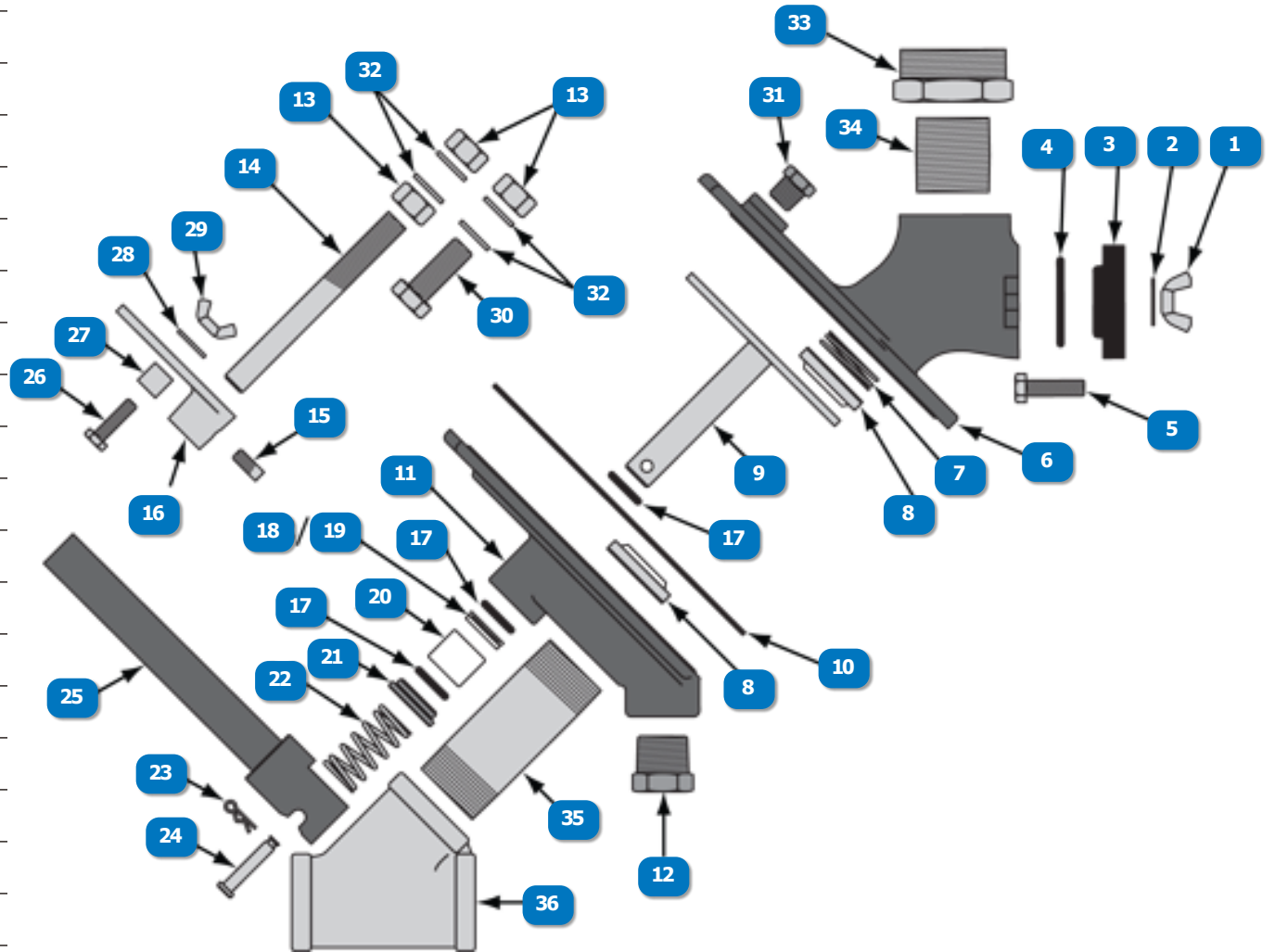
#	DESCRIPTION	PART #
	AMV II, COMPLETE VALVE, X-TREME DUTY™, 1-1/4" NPT (DB1000)	102-4350
	AMV II, SERVICE KIT, INCLUDES #9, 10, (3)17, 18, 19, 20, 21 & 22	102-4800
	AMV II, WIPER SEAL KIT, INCLUDES #7 & (2)8	102-4810
1	AMV II, WING NUT	102-4410
2	AMV II & MPV II, FLAT WASHER	102-4420
3	AMV II, INSPECTION PLATE	102-4430
4	AMV II, O RING (FITS INSPECTION PLATE)	102-4440
5	AMV II, HEX HEAD BOLT	102-4450
6	AMV II, VALVE UPPER BODY, NPT	102-4460
7	AMV II, SEAL SPRING	102-4470
8	AMV II, METERING PLATE WIPER SEAL	102-4480
9	AMV II, METERING PLATE	102-4490
10	AMV II, RUBBER GASKET	102-4500
11	AMV II, VALVE LOWER BODY, NPT	102-4510
12	AMV II, HEX PLUG	102-4520
13	AMV II, NUT	102-4530
14	AMV II, STUD	102-4550
15	AMV II, MACHINE HEAD SCREW	102-4560
16	AMV II, GAUGE UNIT	102-4570
17	AMV II, O RING	102-4580



www.idsblast.com
 (317) 545-0665 • (800) 800-0665
 2717 Tobey Dr. Indianapolis, IN 46219

AMVII (Pg. 2 of 2)

#	DESCRIPTION	PART #
18	AMV II, O RING (FITS SHAFT U-SEAL)	102-4590
19	AMV II, SHAFT U-SEAL	102-4600
20	AMV II, PACKING GLAND	102-4610
21	AMV II, BUSH	102-4620
22	AMV II, SPRING	102-4630
23	AMV II, R-SPLIT PIN	102-4640
24	AMV II, HANDLE PIN	102-4650
25	AMV II, HANDLE	102-4660
26	AMV II, HEX HEAD MACHINE SCREW	102-4670
27	AMV II, GAUGE UNIT SPACER	102-4680
28	AMV II, FLAT WASHER	102-4690
29	AMV II, WING NUT	102-4700
30	AMV II, HEX HEAD BOLT	102-4710
31	AMV II, HEX PLUG	102-4720
32	AMV II, FLAT WASHER	102-4730
33	BUSHING, GALV, 1-1/2" x 1-1/4"	888-3026-10807PB
34	NIPPLE, TBE, SCHEDULE 80, GALV, 1-1/4" x CLOSE	888-3028-10799PB
35	NIPPLE, TBE, SCHEDULE 80, GALV, 1-1/4" x 4"	888-3028-10714PB
36	WYE, GALV, 1-1/4"	888-3012-107PB



www.idsblast.com
 (317) 545-0665 • (800) 800-0665
 2717 Tobey Dr. Indianapolis, IN 46219