



ASSEMBLY INSTRUCTIONS

Sealed Waterproof Cord Connectors

It is important that these instructions are fully complied with to ensure the product is completely watertight and electrically safe - IF IN DOUBT CONSULT A QUALIFIED ELECTRICIAN.

Always wire the socket insert (female) to supply, and plug insert (male) to appliance. Plug/socket inserts can be fitted into any style of main body to give correct plug/socket combination for your application.



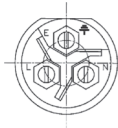
For Use With

Pirate Brand® X-Treme Duty™ Urethane Control Cord,
18AWG, 3 Wire, Sold In 10' Increments Only, Reel Size 1000'

Part Number: **888-7108-183PB**

Wiring and Assembly Instructions

1. To remove plug or socket inserts for wiring, use cap assembly tool to unscrew locking ring.
2. As appropriate to main body type, thread cable through component parts as shown in the illustrations.
3. Strip insulation from cable as shown in Male Cord Connector diagram.
4. Insert bare wire ends into terminals on plug/socket insert and fully tighten screws.



Wire Connections:

Green wire to terminal **E** (N/A for 2-Prong Connectors)

White wire to terminal **N**

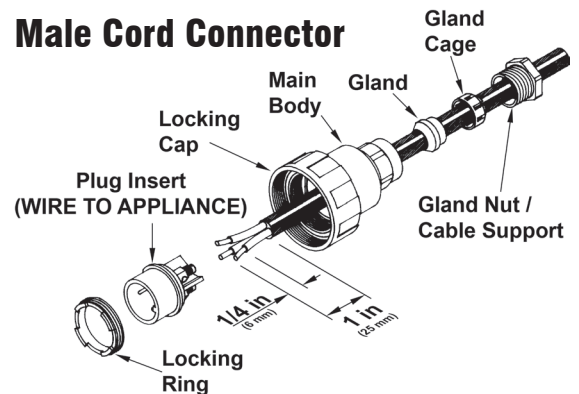
Black wire to terminal **L**

5. After connecting wires, draw cable back until plug/socket insert is correctly seated in D shaped location in the main body. Screw home locking ring using cap assembly tool.
6. For cable mounted units, slide gland cage and gland down cable and into main body then screw gland nut fully home. It is essential to ensure that the gland nut/cable support is fully tightened to ensure cable is securely sealed and clamped. For panel mount units, correctly seat sealing washer and main body onto mounting surface and screw down using rear nut. Ensure seals and glands are kept clean. Locking cap secures plug to socket.

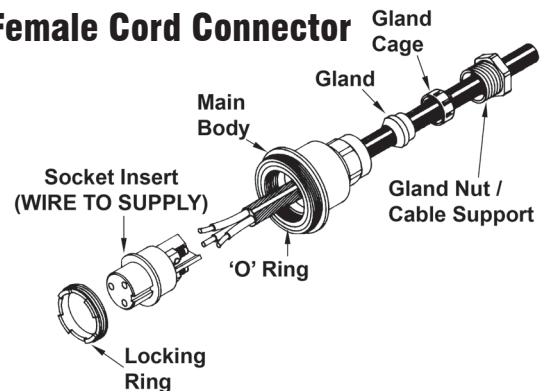
Note:

To ensure that the correct sealing properties of the connector are achieved, it is imperative that all 'O' rings are correctly located and seated before assembly. Please refer to the exploded diagrams for the locations of these seals.

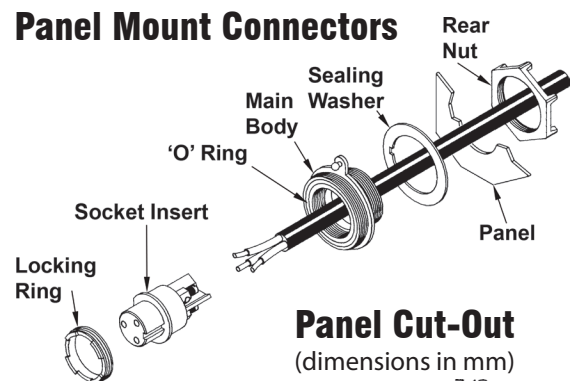
Male Cord Connector



Female Cord Connector

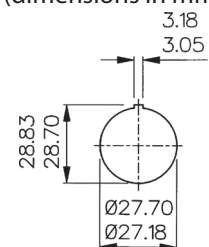


Panel Mount Connectors



Panel Cut-Out

(dimensions in mm)



Assembly Tool / Sealing Cap

Combination Assembly Tool and Panel Mount Sealing Cap For Sealed Waterproof Cord Connectors

Part Number: **888-7109-303PB**



Wire Stripper

Specifically designed to work with urethane jacketed cord like Pirate Brand® X-Treme Duty™

Part Number: **9111PB**