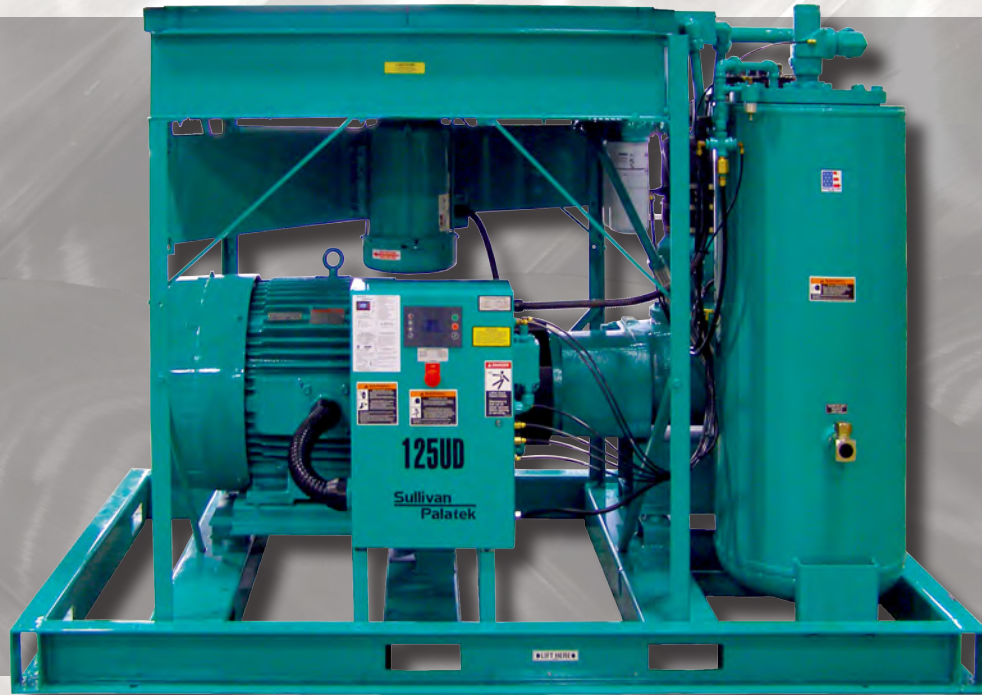


Sullivan Palatek®

UD SERIES COMPRESSORS



INDUSTRIAL AIR COMPRESSOR 40 - 400 HP UPDRAFT MODELS

- **Electric Motor** - 460/575/3/60 standard (208/230/3/60 optional on most models)
- **Motor Starter** - 460 volt, full voltage magnetic starter with 115 volt controls, NEMA 1
- **Protective Devices** - Class 20 Solid State overload relay, high air temperature, high pressure shutdown
- **Lube Fill & Level Elbow** - One piece fluid fill elbow and level indication sight glass
- **Separator Tank** - ASME coded 200PSIG tank, relief valve, minimum pressure/check valve
- **Cooling System** - Cooling system with own fan motor, large side by side lube cooler and air aftercooler
- **Air Intake Filter** - Oversize dry type with easily replaceable elements
- **Inlet/check valve** - One piece housing for dependable performance and complete modulation (40-250HP)
- **Inlet/check valve** - Dual housing for dependable performance and complete modulation (300-400HP)
- **Coupling & Drive** - Compressor is flange mounted to motor C-face for positive alignment and direct driven
- **Controls** - Full modulation, solenoid controlled for smooth lowest possible no load power

“The Ultimate Performance Rotary Screw Air Compressor”

Sullivan Palatek®



The advantages of owning a Sullivan-Palatek Rotary Screw Air Compressor

Sullivan-Palatek provides low maintenance, high performance and one of the most reliable air ends in the industry.*

Our advanced design features oversize radial thrust bearings and precision working rotary screws that provide virtually no wear. Less friction, less heat, compressor runs cool and the circulating fluid lasts longer.

*Platinum and Platinum Plus Warranties Available



"The Ultimate Performance Rotary Screw Air Compressor"

T1 Microprocessor

Pressure Schedule:

Program your daily operating schedule, and allows shut off during factory shut down or change pressure settings up to 28 different times per week.

Built-in Sequencer:

Will control up to 8 machines including VFD's as the trim machine.

Dedicated Pressure Display Always Shown.

Configurable Auxiliary Display:

Several choices: compressor status ~ differential pressure ~ run or loaded hours ~ service time remaining ~ compressor operating temperature.

Unload Pressure:

Easily programmed to suit plant requirements.

Analog Output:

Possible usage for temperature display on updrafts.

Digital Load and Unload Settings:

Allows tighter control of pressure without the need for add-on line pressure flow controller devices.

RS485 Communication:

For multiple machine functions, sequencing and software updating.
Easily read output, can be programmed in English, French and Spanish languages.

Programmable Features

Auxiliary alarm or fault output.
Additional end user alarm or shutdown programmable for normally open or closed contact devices.

Digital Settings:

Drain times
Load and unload pressures
Modbus address
Power failure auto restart
Shut down for excessive temperature or pressure
Stop run-on time
Time for unloaded start
Fan is programmed to come on only after temperature has risen high enough.

Standard Features:

Electric Motor

- 230/460 volt (40-200HP)
- 460 volt (300-400HP)
- NEMA T-frame with C-face Flange
- Open drip proof squirrel cage induction type
- Premium efficient design

Motor Starter

- 460 volt magnetic full voltage starter with 115 volt controls
- UL, ETL listed NEMA 1 enclosure
- Three-phase overload with reset button
- Cooling fan motor protected by solid-state overload relay

Other voltages & soft start starters available upon request



Protective Devices

- Class 20 solid state overload relay
- High discharge temperature switch
- High pressure shutdown switch
- Anti-start pressure switch (prevent starting while air compressor is pressurized)
- Anti-reversing control (protect against reverse rotation operation)



Fluid Filter

- 40-100 HP: SINGLE ELEMENT
- 125-400 HP: DUAL ELEMENT
- Spin-on type element strategically located for ease of maintenance



Separator Tank

- ASME coded 200PSIG rated tank
- Soft seat relief valve
- Minimum pressure/check valve
- High efficient single stage air/fluid separator element
- Demister pad first stage separation included in 300-400HP
- Flexible steel braided discharge pipe (60-400HP)



Lube Fill & Level Elbow

- One piece lube fill and sight glass (40-250HP)
- SAE o-ring sight glass (300-400 HP)
- Large SAE o-ring port for ease of fill on larger sizes
- Vented fill cap for pressure release assurance





Cooling Systems

- Dedicated fan motor
- Side by side lube cooler and air cooled after-cooler
- Easy cleaning
- Updraft design allows hot air to be recovered or exhausted from top of machine



Self-Alignment Coupling Assembly

- Adapter mounts to compressor and motor flange
- Positive alignment feature
- Direct driven zero maintenance coupling assembly

Air Intake Filter

- Oversized dry-type (40-50HP, 125-250HP)
- Throw-away filter assemblies (60-100HP)
- Dual dry-type (300-400HP)
- Easy access replaceable element(s)

NEW! Stainless Steel Pipe Option for Water Cooled Compressors

- Keeps water-cooled UD compressors running cleaner, longer.
- No rust build-up



NEW! Inlet/Check Valve

- One piece housing for dependable performance
- Complete range of modulated inlet control
- Anti-reverse air flow check valve

Acoustical Enclosure (optional)

- Noise reduction insulated acoustical enclosure
- Easy removable access panels for maintenance inspection
- Enclosure fresh incoming air filtration (replaceable)



Controls

- Regulated control for full modulation range
- Solenoid controlled unload blow-down valve (reduced power consumption)
- Automatic start/stop
- Timed dual control

Analog Control (optional)



125 - 250 UD

Standard Features

	40, 50, 60	75 & 100	125, 150 200, 250	300, 350, 400
Protective Devices - Circuit Breaker Protection, Three Phase Overload, Phase Protection	•	•	•	•
Lube Fill & Oil Level Sightglass	•	•	•	•
Separator Tank	•	•	•	•
Cooling System with Fan Motor	•	•	•	•
Air Intake Filter	•	•	•	•
Inlet Check Valve	•	•	•	•
Coupling Drive	•	•	•	•
Microprocessor	•	•	•	•
Lube Filter	•	•		
Dual Filter			•	•
OPTIONAL EQUIPMENT				
Acoustical Enclosure	•	•	•	•
Instrumentation gauges	•	•	•	•
Analog Control (not available with VFD)	•	•	•	•
Starters - X-Line, Wye Delta Starters and Solid-State	•	•	•	•
Variable Frequency Drives	•	•	•	•
Water Cooled	•	•	•	•

Specifications

Model	Drive Motor HP	40	50	60	75	100	125	150	200	250	300	350	400
CAPACITY (CFM)	100 psi						545	750	980	1271	1500	1500	1500
	125 psi	166	210	280	356	440	540	705	900	1125		1490	1490
	150 psi	115	225	225	305	345		615		900			1450
	175 psi	110	160		275	313		540					
	250 psi					240		360					
PRESSURE (PSIG)	100						•	•	•	•	•	•	•
	125	•	•	•	•	•	•	•	•	•		•	•
	150	•	•	•	•	•		•		•			•
	175	•	•		•	•		•					
	250					•		•					
Fan Motor HP	1	1	1.5	2	3	5	5	5	10	15	15	15	15
Sump Capacity (Gal)	3.5	3.5	6	10	10-12	25	25-33	25	25	45	45	45	45
Discharge NPT (inches)	1.25	1.25	1.25	1.5	2	2	2	3	3	3	3	3	3
Length (inches)	66	66	66	80	80	96	96	96	96	120	120	120	120
Width (inches)	34	34	34	45	45	64	64	64	64	66	66	66	66
Height (inches)	48	49	49	60	60	67	67	67	67	76	76	76	76
Weight (lbs)	1050	1215	1460	2100	2250	3900	4025	4535	4600	7300	7400	7400	7800
Weight/Enclosed (lbs)	1350	1515	1760	2500	2650	4475	4600	5110	5175	7900	8000	8000	8400

Description, Specifications and Pictures represented in this brochure may vary from actual equipment purchased.

Sullivan Palatek



Electric Driven Industrial Air Compressors

5-10 HP Belt Driven
15-40 HP Direct Drive
40-400 HP Updraft
High and Low Pressure
Variable Frequency Drive Designs
Specialty Packaged Systems

Piston Air Compressors
Splash Lube
Pressure Lube
Gas Driven

Compressed Air Accessories
Refrigerated Air Dryers
Desiccant Air Dryers
Air Filters
Condensate Management Systems
Oil Free Systems
Air System Analysis
System Management Solutions

Diesel Driven Portable Air Compressors

185 cfm to 1800 cfm
John Deere, Caterpillar and Cummins Engines
3 year Air End Warranty
Utility Models
Offshore Models

High Pressure Portable and Skid
950/350 to 1150/350

Instrument Quality Air
375H to 1600H
Skid Mount Aftercoolers
Skid Mount Dryers and Aftercoolers
Construction Electric 50 to 400 HP
Electronic Parts Orders Through
SmartEquip™

Full Line of Pneumatic Tools
Hoses and Accessories

Distributed By:



2717 Tobey • Indianapolis, IN 46219

(317) 545-0665 • FAX (317) 545-0670 • (800) 800-0665

www.idsblast.com

