



HURRICANE 828

HURRICANE 828 SPECIFICATIONS

- **TRAILER MOUNTED** Chassis – tri 8000 # axles, 4" x 6" rectangular tube frame, with six 8 lug LT235/85 R-16 fourteen ply, steel belted radials. DOT lighting with electric brakes. Enclosed trailer light wiring harness, sealed junction boxes.
- **POWER SOURCE** John Deere turbo-charged diesel engine, 325 HP rated @1,800 RPM.
- **P.T.O (clutch)** Triple disc, 14" with iron plates.
- **VACUUM AIR FLOW (blower)** Roots Dresser 5660 CFM capable of 28" Hg, direct drive through flex coupling, with guard.
- **FILTRATION SYSTEM (3-Stage)**
 Stage 1: Cyclonic separation.
 Stage 2: Baghouse / 37 Teflon coated, quick change filter bags with continuous reverse pulse air cleaning.
 Stage 3: Dual High efficiency blower safety filter.
- **HYDRAULICS** 3.5 GPM, 2200 PSI, direct drive.
- **ENCLOSURE** Lockable steel shroud over all major components.
- **INSTRUMENT PANEL (fully enclosed)** 12 volt key start, Murphy safety system (low oil pressure/ high water temperature-auto shut down)
 Gauges: oil pressure, water temperature, ammeter, tachometer and hour meter, filter cleaning on/off switch, material vacuum & dump time controls.
- **AIR COMPRESSOR** Direct drive Midland twin cylinder; water cooled and oil pressure fed. Midland air dryer with electronic heater.
 AMSE certified air tank mounted on vibration isolators. (Provides air to pneumatic controls and the self cleaning filter system)

STANDARD EQUIPMENT

- Paint-one color (custom lettering available)
- Wet or dry operation
- Tool box
- Automatic cone vibrator
- 100 gallon fuel tank
- Adjustable pintle hook
- Emergency stop button
- Dual hydraulic lift legs to level trailer

OPTIONS

- Spare tire & carrier
- Cold weather package
- HEPA filtration
- Slide gate discharge
- Auxiliary 50 gallon fuel tank
- 16" manhole on baghouse
- High reach package for discharge up to 11'
- Asbestos / hazardous waste package
- Auger in hopper (cone)
- Auxiliary air hose 120 PSI
- Skid mount
- Hydraulic surge brakes
- Goose neck trailer

SAFETY FEATURES

- OSHA approved belt guard
- Remote emergency stop button
- Safety struts for baghouse
- Emergency brake away chain
- Wheel chocks
- Optional HEPA filtration

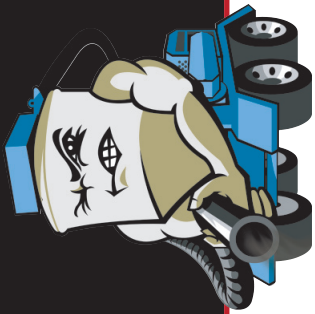
Distributed By:



2717 Tobey • Indianapolis, IN 46219
 (317) 545-0665 • FAX (317) 545-0670 • (800) 800-0665
www.idsblast.com

Dimensional Drawing On Reverse Side





HURRICANE™

**HURRICANE
828**

INDUSTRIAL

VACUUM

DIMENSIONS

WIDTH 8'3"

WEIGHT 16,700 lbs.

