

HURRICANE 500_{EM}

Distributed By:



2717 Tobey • Indianapolis, IN 46219
(317) 545-0665 • FAX (317) 545-0670 • (800) 800-0665
www.idsblast.com

HURRICANE 500EM SPECIFICATIONS

- **SKID MOUNTED**
4" X 8" rectangular tube frame, fork pockets, and certified lifting cage
- **POWER SOURCE**
100 HP electric motor, 460 volt, 3 phase hostile duty motor (full load amps 115)
Optional 150 HP motor
- **SOUND ATTENUATION PACKAGE**
12" blower discharge silencer and a 12" inlet blower silencer
- **VACUUM AIR FLOW (Blower)**
Roots Dresser 616 DVJ, 2350 CFM capable of 23" Hg, 5 belt driven with OSHA approved guard
150 HP option: 2350 CFM capable of 27" Hg
- **FILTRATION SYSTEM-3 STAGE**
Cyclonic separation. Baghouse - 37 Teflon coated, quick change filter bags with continuous reverse pulse air cleaning
High efficiency blower safety filter
- **INSTRUMENT PANEL (NEMA 4)**
Soft start package, push button on/off switch with indicator light, disconnect lever, filter cleaning on/off switch, material dump on/off switch

STANDARD EQUIPMENT

- Paint-one color (custom lettering available)
- Wet or dry operation
- Automatic cone vibrator
- Emergency stop button with 50' cord

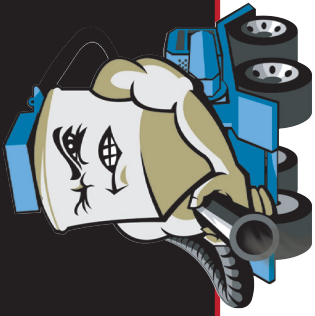
OPTIONS

- | | |
|------------------------------|------------------------------------|
| • 150 HP electric motor | • HEPA filtration |
| • Slide gate discharge | • Tool box |
| • 16" manhole on baghouse | • Air compressor - 120 PSI |
| • Auger in hopper (cone) | • Trailer mounted to DOT standards |
| • Hydraulics (lift cylinder) | |



Dimensional Drawing On Reverse Side





HURRICANE 500 EM

HURRICANE



DIMENSIONS

WIDTH 76" WEIGHT 8,500 lbs

