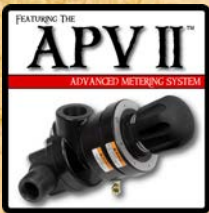




APV II™

AUTOMATIC PLUNGER VALVE II

BETTER PERFORMANCE & LOWER MAINTENANCE COST



Clean out port
1" NPT with
stainless plug

Breather Hole
relocated and filter
added to prevent
abrasive dust from
entering chamber

Hexagon cast
into valve top
for ease of
assembly and
disassembly

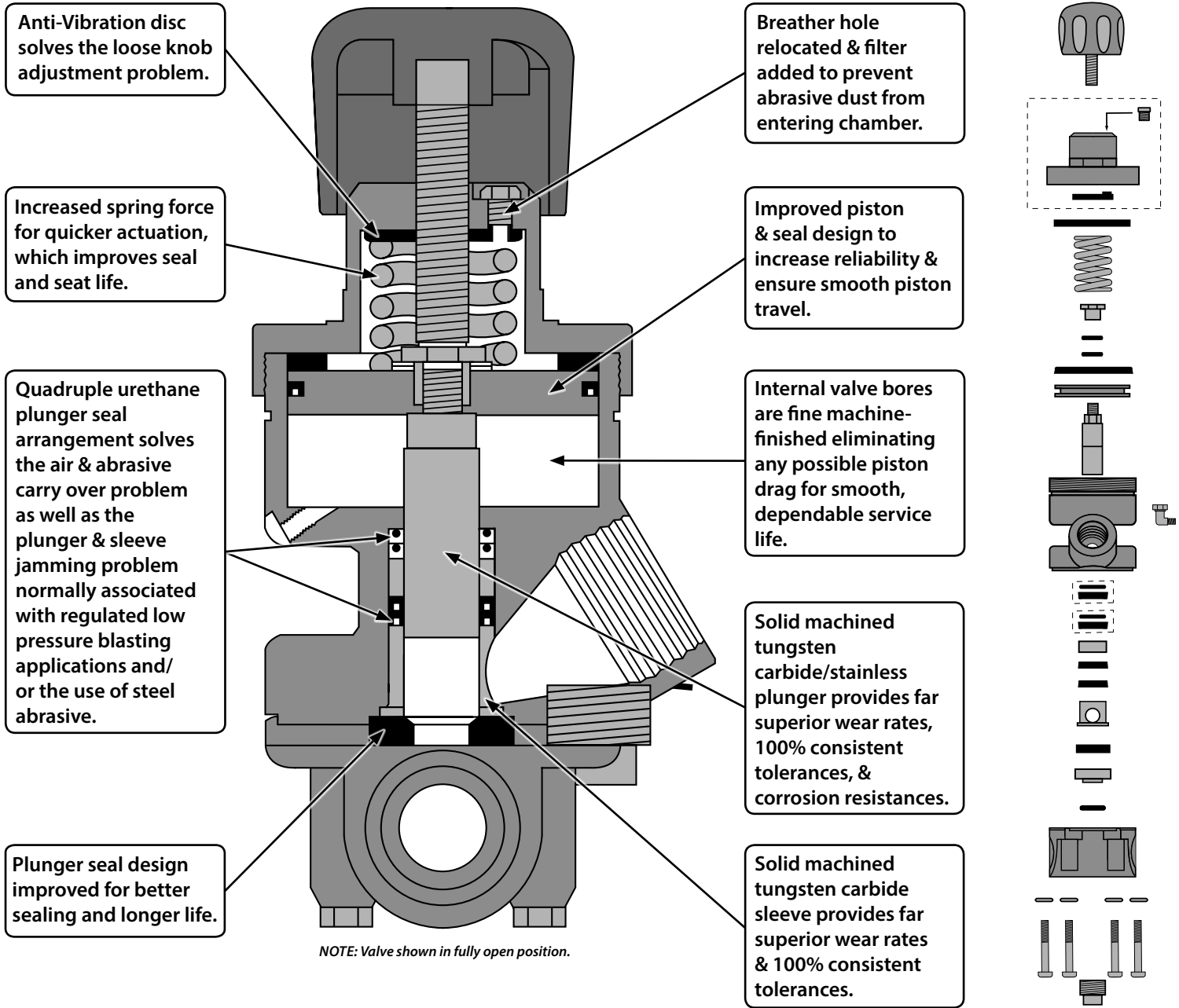
Abrasive
Adjustment
Indicator (AAI)

All pipe
nipples are
hardened to
55 HRC for
extended
service life



2717 Tobey • Indianapolis, IN 46219
(317) 545-0665 • FAX (317) 545-0670 • (800) 800-0665
www.idsblast.com

DIE CAST ALUMINUM PARTS ARE ANODIZED AND POWDER COATED FOR A CORROSION-RESISTANT FINISH



RELATED PARTS



UNION END BALL VALVE
 PN: 888-2408-907PB
 BALL VALVE, UNION END, 1-1/4"
 THE BIG-BORE™ UNION END BALL VALVE IS A MUST WHEN USING A BIG-BORE™ METERING VALVE.



APV SERVICE WRENCH
 PN: MP01035
 APV WRENCH, FITS APV/APVII CAPS & HANDWAY NUT
 HELPS WHEN PERFORMING MAINTENANCE ON YOUR APV AND APVII VALVES. LARGE OPEN END FITS THE VALVE CAP. SMALLER INTERNAL HEX FITS THE BLAST POT HANDWAY NUT.

