

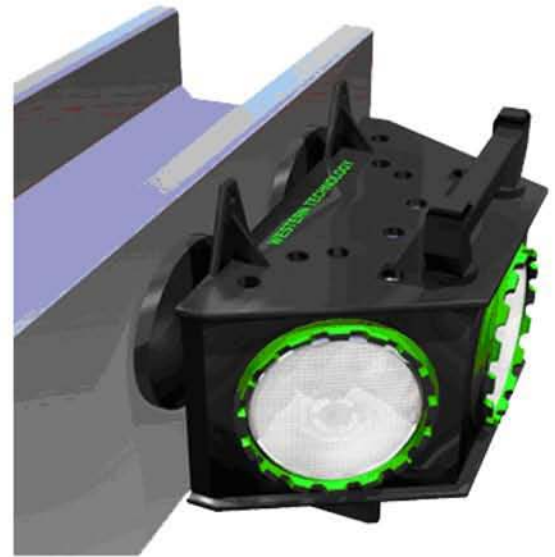


## Western Technology For All Your Lighting Needs

### 3- Directional Magnetic Mount LED Area Light 4100LED Series

#### Features & Benefits

- Portable light with magnetic mounts
- Ideal work area lighting
- Quick and sure placement using 150 lb. pull industrial magnets
- Magnets are encapsulated in polyurethane for long, even wear
- Uses PAR 38 LED lamps
- LED technology makes this light vibration and impact resistant
- Remains cool to the touch during operation
- Durable polyurethane construction prevents rust and corrosion, is easily cleaned or decontaminated and is suitable for all ambient temperature operations
- Comes standard with 25' Western Technology "Extreme Cable" (additional lengths available)
- Optional protective lamp guards offer additional protection



**Distributed By:**



2717 Tobey • Indianapolis, IN 46219  
(317) 545-0665 • FAX (317) 545-0670 • (800) 800-0665  
[www.idsblast.com](http://www.idsblast.com)