

KASTHALL

KARUSELL
INGRID DESSAU



PRODUCT SPECIFICATIONS KARUSELL

In celebration of Ingrid Dessau's 100th birthday in 2023, Kasthall has chosen to honor the designer by reviving one of her sketches from the historical archive – Karusell dated 1959. The team at Kasthall utilized digital weaving programs and modern machinery to analyze and recreate the binding for the rug. The result is a stunning flatwoven rug in wool, which pays homage to the company's history while also pushing the boundaries of traditional woven rugs using multiple colors in the weft direction.

PRODUCT TYPE: Woven rug in pure wool

WEFT MATERIAL: 100% wool

WARP MATERIAL: 100% linen

TOTAL HEIGHT: approx. 7 mm

TOTAL WEIGHT: approx. 2600 g/m²

SIZES: 200x300 cm, 280x300 cm, 280x420 cm, 360x540 cm, 440x660 cm.



Wear classification:
(EN 14215) Class 22
Domestic General



Luxury rating:
(EN 1307) LC1



Suitable for Castor chair only
with additional backing:
(EN 1307) Occasional use



SUSTAINABILITY AT KASTHALL

Sustainability is rooted in Kasthall's history. It was there when we started and continues today in our work and ambition to contribute to a sustainable future. It is evident in our circular approach to design and in a fully-traceable supply chain to reduce our impact on people and planet. It is part of our commitment to local Swedish production and a made-to-order system that creates less waste. We also use third-party environmental declarations and assessment to ensure reliability. Read more about our sustainability work and philosophy at kasthall.com.

CARE ADVICE WOVEN RUGS

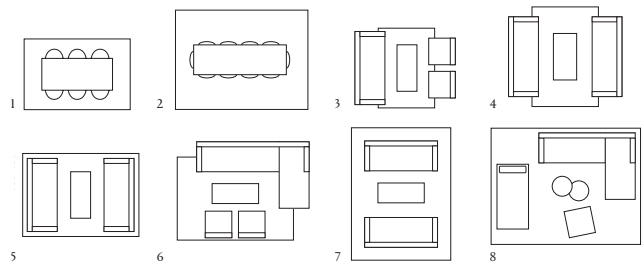
To further extend the lifetime of your rug, Kasthall recommends a regular maintenance so that the rug may retain its shape and appearance. If you have a light, single-colour rug you will need to care for it more often than a darker, patterned rug. It is also a good idea to use a rug underlay to prolong the life of your woven rug and prevent it from slipping on any type of floor. Thorough vacuuming is the best, most economical and environmentally friendly method of cleaning. Beating or shaking a rug may damage the fibers. It is most efficient to vacuum the rug one direction at a time.

CLEANING ADVICE

We recommend that the rug is cleaned by a professional cleaner, using the extraction method on a flat surface. The quantity and temperature of the water will depend on the material. Good ventilation during the drying process is essential. Shrinkage will be about 3–5%. Kasthall's rugs are not to be machine-washed or dry-cleaned. At kasthall.com you can read more about our materials, how to look after your rug and our stain guide.

CHOOSING A RUG

Choose the characteristics of the rug, its colour and design to suit the space in which it will be laid. If it is to be laid in a hall, for example, you may choose a type of rug that is more resistant to wear, and a colour that is a little darker and dirt-tolerant. Use a rug as a means of bringing together the rest of the interior. Decide whether you want to place a sofa on the rug or at its edge. If a rug is to be placed underneath a dining table, add at least 60 cm all round the table to allow space for pulling out the chairs. Woven rugs are suitable for most settings, both public and private. Ideal for use in domestic settings such as dining rooms, halls and kitchens, and in retail environments, conference premises and corridors. May also be laid as a carpet.



Examples of commonly used rug sizes:

1. Dining table with 6 chairs: rug size 200x300 cm
2. Dining table with 10 chairs: rug size 300x400 cm
3. Three-seat couch with armchairs: rug size 170x240 cm
4. Three-seat double couch: rug size 200x300 cm
5. Three-seat double couch: rug size 250x350 cm
6. Corner sofa with armchairs: rug size 250x350 cm
7. Three-seat double couch: rug size 300x400 cm
8. Corner sofa with daybed and armchair: rug size 350x450 cm

OTHER INFORMATION

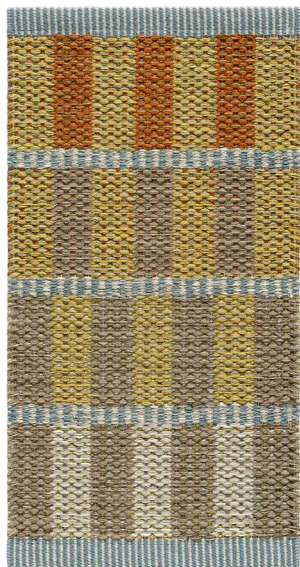
- Depending on the materials used and the rug-making process, dimensions may vary by up to 5% so please state maximum or minimum dimensions when placing your order.
- Note that all rugs from Kasthall are made from natural materials. Variations in color and texture can therefore arise between batches of yarn and dye baths.
- Rugs should be laid on an underlay that prevents them from moving on all types of flooring. This extends the life of the rug and reduce the risk of slipping.
- The use of backing fixes the dimensions of a rug and extends its life. This is recommended for rugs that are wider than 200 cm and/or those larger than six sqm.

KARUSELL

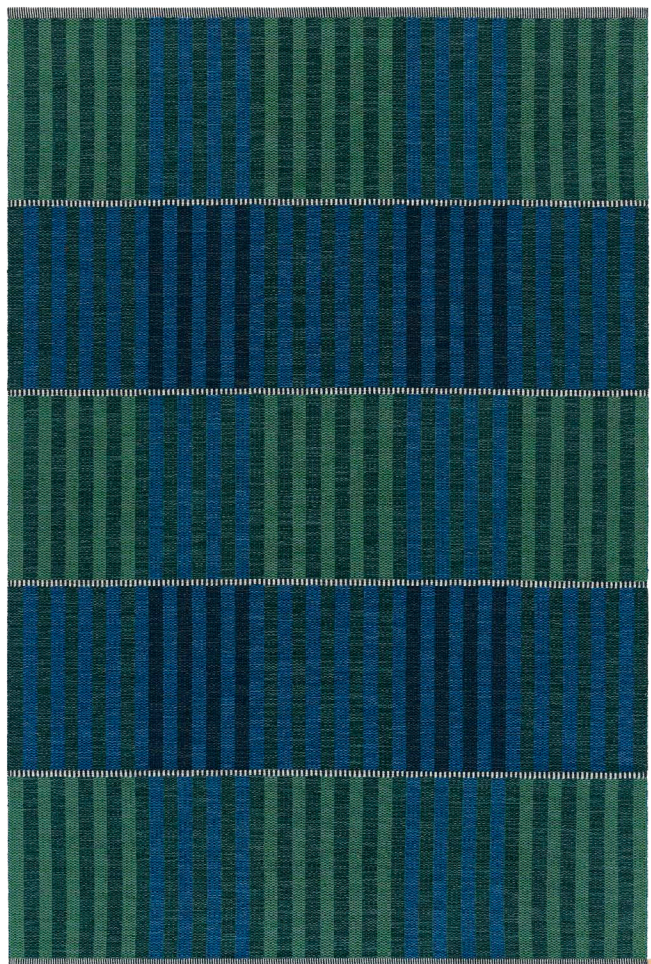
Design INGRID DESSAU
Woven rug in pure wool



Blue 200



Yellow 400



Rug 200x300 cm, Blue 200



Rug 200x300 cm, Yellow 400

KASTHALL HEAD QUARTER

Fritslavägen 42 | 511 57 Kinna, Sweden | Phone +46(0)320 205 900 | info@kasthall.se

For the latest updates of our collection, please visit www.kasthall.com

All the designs shown here are protected under law. Kasthall have the property rights and distribution rights worldwide. Copying will be prosecuted.



KASTHALL.COM

KASTHALL CELEBRATES HISTORY WITH REVIVED RUG DESIGN

In celebration of Ingrid Dessau's 100th birthday in 2023, Kasthall has chosen to honor the designer by reviving one of her sketches from the historical archive – Karusell dated 1959.

The team at Kasthall utilized digital weaving programs and modern machinery to analyze and recreate the binding for the rug. The result is a stunning flatwoven rug in wool, which pays homage to the company's history while also pushing the boundaries of traditional woven rugs using multiple colors in the weft direction.

INGRID DESSAU LEGACY

In 1952, Astrid Sampe was contacted by Håkan Reis, the new CEO of Kasthall, to initiate a design collaboration. Håkan believed that design was the key to Kasthall's success and placed it at the forefront. A few years later, Astrid advised

Håkan that if design was to lead Kasthall forward, they should hire a chief designer and it should not be her. She then recommended a 31-year-old talented woman named Ingrid Dessau.

Ingrid was as much an innovator as she was a creator. She always welcomed new ideas, whether they were about developing Kasthall's artistic language or embracing new weaving techniques. Ingrid worked at Kasthall for almost 25 years, between 1954–1978. It is impossible to think of Kasthall's rug factory in Kinna during this period without also thinking of Ingrid Dessau from Svalöv. Her meticulous character and eye for detail were second to none, or as she put it herself:

– There should be a difference in nuance, but it should be so small that you can't see it.



Ingrid Dessau was a pioneer in Sweden's modern textile and design history, known for her unique perspective and exceptional talent. With roots in the southern Swedish folk crafts tradition, she studied textiles and worked as a designer, developing patterns for rugs, fabrics, and embroideries. After marrying the founder of the Danish design store Illums Bolighus, she took a break from her design work and settled for a time in New York, before making a successful comeback with a 1953 exhibition. Dessau is considered one of the most influential figures in Sweden's modern textile and design history.

KASTHALL HEAD QUARTER

Fritslavägen 42 | 511 57 Kinna, Sweden | Phone +46(0)320 205 900 | info@kasthall.se

For the latest updates of our collection, please visit www.kasthall.com

All the designs shown here are protected under law. Kasthall have the property rights and distribution rights worldwide. Copying will be prosecuted.



KASTHALL.COM