



DORIS
DESIGN GUNILLA
LAGERHEM ULLBERG

KASTHALL

PRODUCT SPECIFICATIONS FOR DORIS

Doris is a woven rug in pure wool that has been combined with two of Kasthall's unique yarns – the fluffy chenille yarn that creates the rug's pattern and our classic wool yarn, which is used in many of our woven collections. The geometric dot pattern is inspired by the shape of different precious stones and gives the surface of the rug a beautiful structure. Doris is also excellent for installing as an exclusive wall-to-wall carpet.

PRODUCT TYPE: Woven chenille rug in pure wool

WEFT MATERIAL: 100% wool

WARP MATERIAL: 100% linen

TOTAL HEIGHT: approx. 13 mm

TOTAL WEIGHT: approx. 2900 g/m²

SIZE: Custom made sizes, width 70–600 cm upon request.

Or choose amongst our suggested sizes; 90x240 cm, 140x200 cm, 170x240 cm, 200x300 cm, 250x350 cm, 300x400 cm, 350x450 cm.



Wear classification:
Class 21 (EN 1307)
Domestic Moderate



Luxury rating:
LC 1 (EN 1307)



Suitable for Castor chair
only with additional backing:
Occasional use (EN 1307)



Fire classification:
Cfl-s1 (EN 13501-1)

Meets the requirements for Green Label Plus



CARE ADVICE WOVEN RUGS

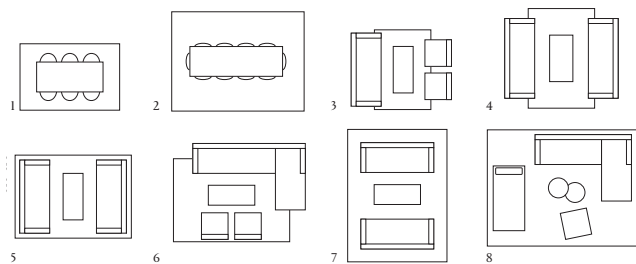
To further extend the lifetime of your rug, Kasthall recommends a regular maintenance so that the rug may retain its shape and appearance. If you have a light, single-colour rug you will need to care for it more often than a darker, patterned rug. It is also a good idea to use a rug underlay to prolong the life of your woven rug and prevent it from slipping on any type of floor. Thorough vacuuming is the best, most economical and environmentally friendly method of cleaning. Beating or shaking a rug may damage the fibers. It is most efficient to vacuum the rug one direction at a time.

CLEANING ADVICE

We recommend that the rug is cleaned by a professional cleaner, using the extraction method on a flat surface. The quantity and temperature of the water will depend on the material. Good ventilation during the drying process is essential. Shrinkage will be about 3–5%. Kasthall's rugs are not to be machine-washed or dry-cleaned. At www.kasthall.com you can read more about our materials, how to look after your rug and our stain guide.

CHOOSING A RUG

Choose the characteristics of the rug, its colour and design to suit the space in which it will be laid. If it is to be laid in a hall, for example, you may choose a type of rug that is more resistant to wear, and a colour that is a little darker and dirt-tolerant. Use a rug as a means of bringing together the rest of the interior. Decide whether you want to place a sofa on the rug or at its edge. If a rug is to be placed underneath a dining table, add at least 60 cm all round the table to allow space for pulling out the chairs. Woven rugs are suitable for most settings, both public and private. Ideal for use in domestic settings such as dining rooms, halls and kitchens, and in retail environments, conference premises and corridors. May also be laid as a carpet.



Examples of commonly used rug sizes:

1. Dining table with 6 chairs: rug size 200x300 cm
2. Dining table with 10 chairs: rug size 300x400 cm
3. Three-seat couch with armchairs: rug size 170x240 cm
4. Three-seat double couch: rug size 200x300 cm
5. Three-seat double couch: rug size 250x350 cm
6. Corner sofa with armchairs: rug size 250x350 cm
7. Three-seat double couch: rug size 300x400 cm
8. Corner sofa with daybed and armchair: rug size 350x450 cm

SUSTAINABILITY AT KASTHALL

Sustainability is rooted in Kasthall's history. It was there when we started and continues today in our work and ambition to contribute to a sustainable future. It is evident in our circular approach to design and in a fully-traceable supply chain to reduce our impact on people and planet. It is part of our commitment to local Swedish production and a made-to-order system that creates less waste. We also use third-party environmental declarations and assessment to ensure reliability. Read more about our sustainability work and philosophy at kasthall.com.

OTHER INFORMATION

- Depending on the materials used and the rug-making process, dimensions may vary by up to 5% so please state maximum or minimum dimensions when placing your order.
- Note that all rugs from Kasthall are made from natural materials. Variations in colour and texture can therefore arise between batches of yarn and dye baths.
- Rugs should be laid on an underlay that prevents them from moving on all types of flooring. This extends the life of the rug and reduce the risk of slipping.
- The use of backing fixes the dimensions of a rug and extends its life. This is recommended for rugs that are wider than 200 cm and/or those larger than six sqm.

DORIS

Design GUNILLA LAGERHEM ULLBERG
Woven chenille rug in pure wool



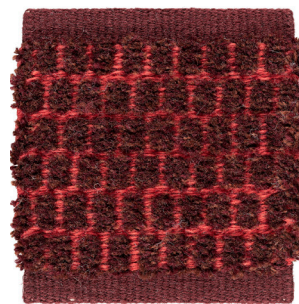
White Pearl 80



Windy Grey 581



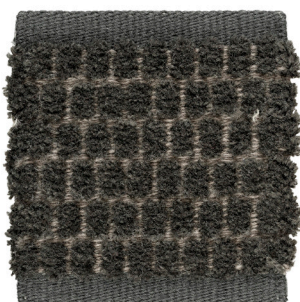
Desert Green 830



Cranberry Red 710



Radiant Blue 220



Dark Sky 582



KASTHALL HEAD QUARTER

Phone +46(0)320 205 900 | Fritslavägen 42 | Box 254 | 511 23 Kinna, Sweden | info@kasthall.se

For the latest updates of our collection, please visit www.kasthall.com

All the designs shown here are protected under law. Kasthall have the property rights and distribution rights worldwide. Copying will be prosecuted.



KASTHALL.COM

DORIS

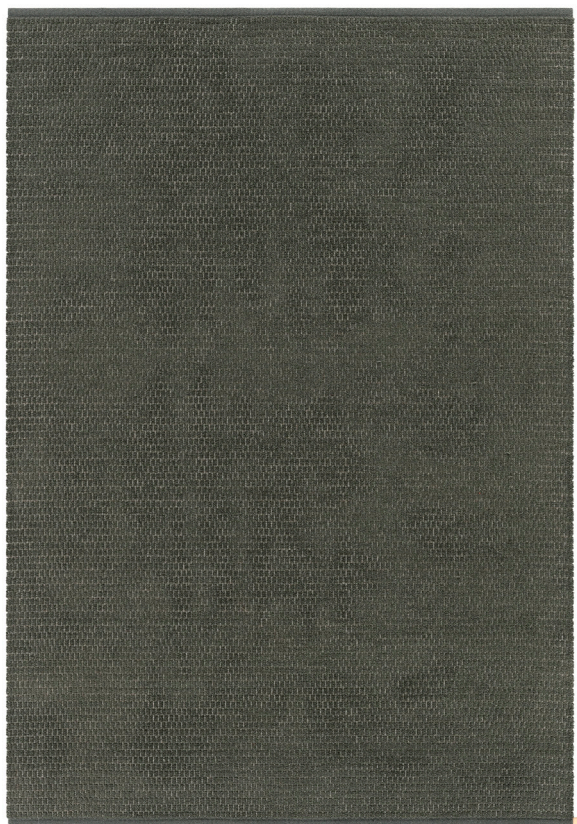
Design GUNILLA LAGERHEM ULLBERG
Woven chenille rug in pure wool



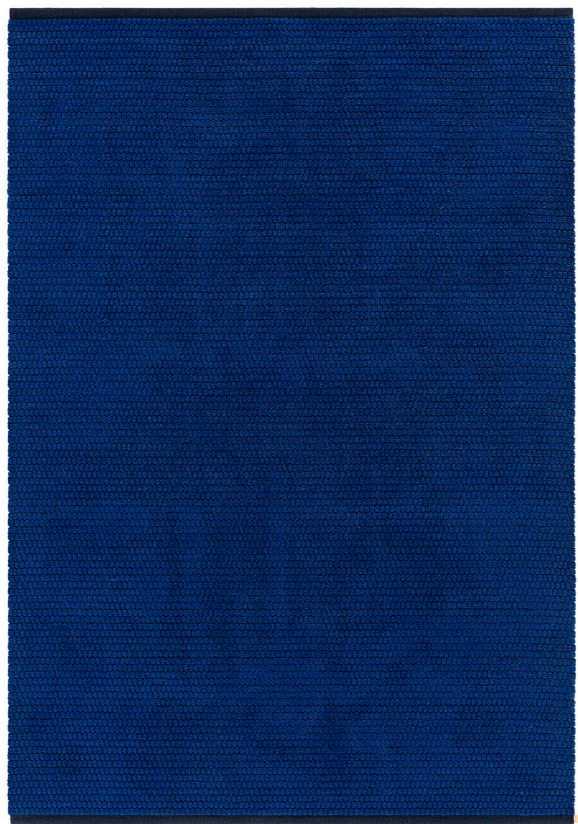
Rug 170x240 cm, White Pearl 80



Rug 170x240 cm, Desert Green 830



Rug 170x240 cm, Dark Sky 582



Rug 170x240 cm, Radiant Blue 220

KASTHALL HEAD QUARTER

Phone +46(0)320 205 900 | Fritslavägen 42 | Box 254 | 511 23 Kinna, Sweden | info@kasthall.se

For the latest updates of our collection, please visit www.kasthall.com

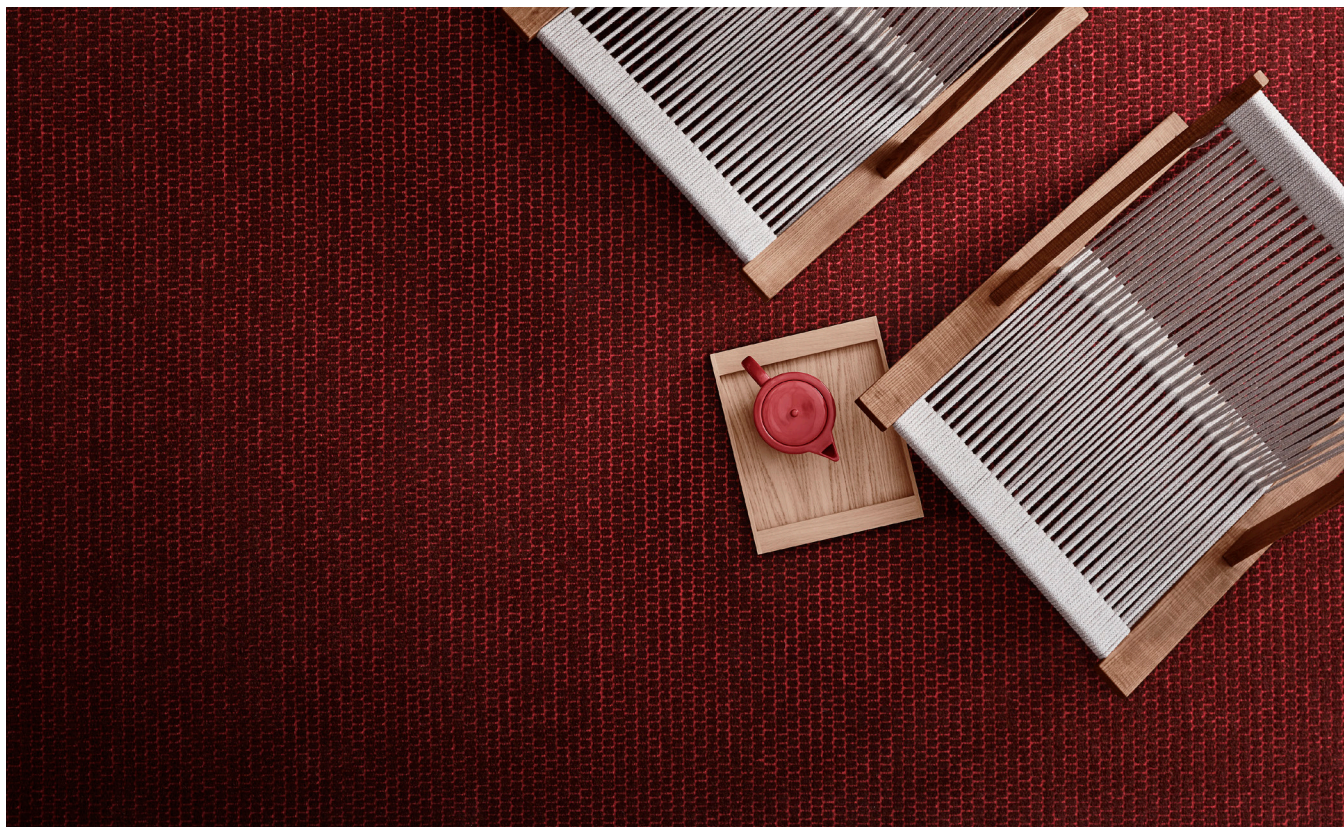
All the designs shown here are protected under law. Kasthall have the property rights and distribution rights worldwide. Copying will be prosecuted.



KASTHALL.COM

DORIS

Design GUNILLA LAGERHEM ULLBERG
Woven chenille rug in pure wool



KASTHALL HEAD QUARTER

Phone +46(0)320 205 900 | Fritslavägen 42 | Box 254 | 511 23 Kinna, Sweden | info@kasthall.se

For the latest updates of our collection, please visit www.kasthall.com

All the designs shown here are protected under law. Kasthall have the property rights and distribution rights worldwide. Copying will be prosecuted.



KASTHALL.COM