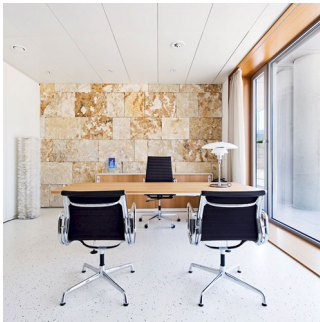


# PH 4½-3½ Glass Table

The fixture is designed based on the principle of a reflective three-shade system, which directs the majority of the light downwards. The shades are made of hand blown opal three-layer glass, which is glossy on top and sandblasted matte on the underside, giving a soft and diffused light distribution.



**American Heart  
Institute**



**Sydbank**

## Product info

### Mounting

Cord type: Black. Cord length: 9'. Switch: On/off switch on the base.

### Finish

High lustre chrome plated. White opal glass.

### Materials

Base: High lustre chrome plated, spun brass. Shades: Hand blown white opal glass. Anti-glare ring: Purple, spun aluminum. Top plate: High lustre chrome plated, spun brass. Stem: High lustre chrome plated, steel.

### Sizes and weight

Width x Height x Length (in.) | 17.7 x 21.7 x 17.7 Max 20.4 lbs

### Compliance

cULus, Dry location.

### Light source

1x15W A-19/IF medium

## Product family



PH 4½-4 Glass Pendant



PH 4½-3½ Glass Floor



## Product variants

### Light source

1x15W A-19/IF medium

### Voltage frequency

120V

# Product description

Portable fixture.

Terse and iconic design.

The size of the three shades is adjusted for optimum performance and comfort.

Interior surfaces of glass shades sandblasted to diffuse light.

Member of a family products of various sizes and type.

---

## Mounting

Portable fixture plugs into standard wall outlet.

---

## Light description

The fixture emits glare free, comfortable light.

---

## Design

Poul Henningsen

---

## Material

Shades: mouth blown white glass, 1.5mm (0.06") thick.

Struts: chrome plated steel.

Interior reflectors: spun aluminum, lilac powder coated.

Base: steel with chrome-plated brass cover.

Stern: extruded steel, chrome plated, 1.5mm (0.06") thick.

Switch: on/off, phenolic, on base.

Socket: Porcelain, medium base for A-19, frosted envelope lamps.

---

## Weight

20.408

---

## Finish

High lustre chrome plated

---

## Voltage

120V

## Light distribution diagrams

Cartesian|solux|Polar

□ □ □

## Spare parts & accessories

Product	Variant number
FINGER SCREW SS M3X12 (3PCS) LOWER	5744610528
PH 4½-3½ GLASS TABLE/FLOOR, MIDDLE SHADE	5744610612
PH 4½-3½ GLASS TABLE/FLOOR, LOWER SHADE	5744610625
PH 4½-3½ GLASS TABLE/FLOOR, TOPSHADE ACC	5744610722
FINGER SCREW SS M3X16 (3PCS) MIDDLE	5744610845