

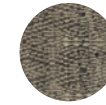
Paragon



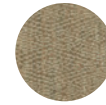
Flint
PAR-FL



Shadow
PAR-SW



Birch
PAR-BI



Primrose
PAR-PR



Imperial	Metric
7'10" x 9'10"	2.4 x 3 m
8'10" x 11'10"	2.7 x 3.6 m
9'10" x 13'9" *	3 x 4.2 m *
Custom	

Length of rug does not include tassels (¾" each end).
 * Birch and Flint only.



Crafted by Hand
 Construction: **Hand knotted**
 End finish: **Cotton tassels**
 Height: **¾"**
 Knot count: **100 /inch²**
 Handmade in India under Fair Trade standards.

Suitability
 Indoor
 Residential
 Light
 Commercial
 Project

Composition
 100% Wool Pile / 100% Cotton Warp & Weft

Areas of use
 Living
 Dining
 Bedroom
 Hallway

Custom Sizes
 Max. size 19'8" x 49'3" (6 x 15 m).
 Please contact the sales team for accurate lead times.

Declare Label
 Verified as being 100% Red List free.

Care instructions

Vacuum your rug regularly as shedding of loose fibers will occur with a new rug (do not use a rotating or brush head on the vacuum cleaner). Promptly clean spills by blotting with a clean, undyed cloth. Do not dry clean or use harsh chemicals. Never fold your rug or keep

in an airtight bag. Avoid direct or continuous exposure to sunlight and rotate regularly.

Sizing

Being a handmade product, a 3% size variation is possible.

Rug pad

We recommend using a rug pad to prevent slipping, provide extra comfort and extend the life of your rug.

Full Terms & Conditions

armadillo-co.com/terms-and-conditions