

DESCRIPTION

The Neva light bar chair, a testament to timeless elegance and classic design, where a sensuous and fluid form is beautifully realised through soft, angular edges and seamless transitions. Remarkably thin and lightweight, each Neva light bar chair is a masterpiece of meticulous hand-finishing by seasoned craftsmen. Personalise your bar chair with a choice between a solid wood seat or the comfort of upholstery, available in a range of premium leathers or fabrics. For added customisation, the footrest can be tailored with a RAL powder-coated finish in black or white, or opt for custom materials of aged brass or inox upon request. Elevate your space with the Neva light bar chair, where style meets comfort and craftsmanship meets artistry, delivering an unparalleled seating experience.

PRODUCTION PROCESS

The bar chair parts are made of solid wood pieces of the same length but different widths, with precisely crafted joints on CNC machines. Each piece is chosen through careful matching of wood colors and structures. The upholstered seats are covered with HR foam and upholstery for superior comfort. Certain chair collections are produced using a special wood bending technology. The technical parameters of hand-assembled chairs comply with standard requirements. Final sanding is done manually with fine-grained sandpaper, and various types of finishes enable a wide selection of the chair's final appearance.

PRODUCT TYPE

Bar chair

USAGE

Indoor

DISMANTLING OPTION

No

GLIDERS

Standard gliders

STOCK ITEMS

No

COUNTRY OF ORIGIN

BiH

NOTE

The listed weights are approximate; the weight of each piece depends on the type of wood.

DIMENSIONS

Height: 89 cm/ 35.04 in
Width: 41 cm/ 16.14 in
Depth: 50 cm/ 19.69 in
Seat height: 65 cm/ 25.59 in
Seat size: 40x40cm / 15.75x15.75 in

PACKAGING

Stretch wrap + five-layer cardboard box.
1 piece

PACKAGING DIMENSIONS

Height: 90 cm/ 35.43 in
Width: 45 cm/ 17.71 in
Depth: 50 cm/ 19.69 in

WEIGHT

Weight: 8 kg
Packaging: 1.5 kg

MATERIALS

Oak, American and European walnut, elm, cherry, maple, ash

WOOD FINISHES

Available in a variety of natural oil and soap finishes. Discover more information artisan.ba/materials

UPHOLSTERY

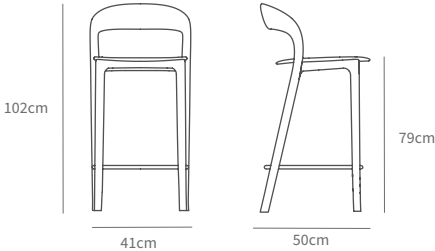
Available in a variety of leathers and fabrics. More information at artisan.ba/materials

BASE FINISHES FOR FOOTREST

The footrest can be inox, brass, black or white. Unless the color is specified black color will be applied.

CLEANING INSTRUCTIONS

Please download our material care & cleaning instructions through artisan.ba/materials



DESCRIPTION

The Neva light bar chair, a testament to timeless elegance and classic design, where a sensuous and fluid form is beautifully realised through soft, angular edges and seamless transitions. Remarkably thin and lightweight, each Neva light bar chair is a masterpiece of meticulous hand-finishing by seasoned craftsmen. Personalise your bar chair with a choice between a solid wood seat or the comfort of upholstery, available in a range of premium leathers or fabrics. For added customisation, the footrest can be tailored with a RAL powder-coated finish in black or white, or opt for custom materials of aged brass or inox upon request. Elevate your space with the Neva light bar chair, where style meets comfort and craftsmanship meets artistry, delivering an unparalleled seating experience.

PRODUCTION PROCESS

The bar chair parts are made of solid wood pieces of the same length but different widths, with precisely crafted joints on CNC machines. Each piece is chosen through careful matching of wood colors and structures. The upholstered seats are covered with HR foam and upholstery for superior comfort. Certain chair collections are produced using a special wood bending technology. The technical parameters of hand-assembled chairs comply with standard requirements. Final sanding is done manually with fine-grained sandpaper, and various types of finishes enable a wide selection of the chair's final appearance.

PRODUCT TYPE

Bar chair

USAGE

Indoor

DISMANTLING OPTION

No

GLIDERS

Standard gliders

STOCK ITEMS

No

COUNTRY OF ORIGIN

BiH

NOTE

The listed weights are approximate; the weight of each piece depends on the type of wood.

DIMENSIONS

Height: 102 cm/ 40.16 in
Width: 41 cm/ 16.14 in
Depth: 50 cm/ 19.69 in
Seat height: 79 cm/ 31.10 in
Seat size: 40x40cm / 15.75x15.75 in

PACKAGING

Stretch wrap + five-layer cardboard box.
1 piece

PACKAGING DIMENSIONS

Height: 105 cm/ 41.33 in
Width: 45 cm/ 17.71 in
Depth: 50 cm/ 19.69 in

WEIGHT

Weight: 8 kg
Packaging: 1.5 kg

MATERIALS

Oak, American and European walnut, elm, cherry, maple, ash

WOOD FINISHES

Available in a variety of natural oil and soap finishes. Discover more information artisan.ba/materials

UPHOLSTERY

Available in a variety of leathers and fabrics. More information at artisan.ba/materials

BASE FINISHES FOR FOOTREST

The footrest can be inox, brass, black or white. Unless the color is specified black color will be applied.

CLEANING INSTRUCTIONS

Please download our material care & cleaning instructions through artisan.ba/materials

AMERICAN WALNUT
A01 Natural soap



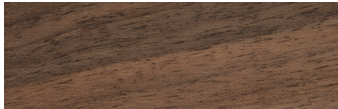
AMERICAN WALNUT
A03 Natural oil



EUROPEAN WALNUT
A01 Natural soap



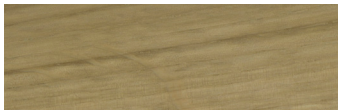
EUROPEAN WALNUT
A03 Natural oil



EUROPEAN WALNUT
A04 White oil



OAK
A01 Natural soap



OAK
A03 Natural oil



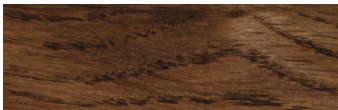
OAK
A3 Loba white oil



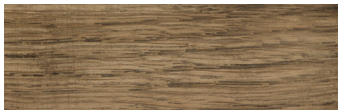
OAK
A04 White pigmented oil



OAK
Wenge oil



OAK
AR1 Jahorina pigment



OAK
Rubio black



ELM
A01 Natural soap



ELM
A03 Natural oil



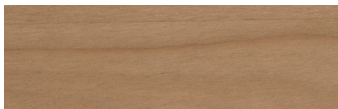
ELM
A04 White pigmented oil



ELM
AR1 Jahorina pigment



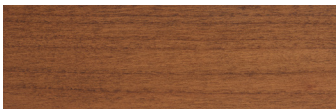
CHERRY
A01 Natural soap



CHERRY
A03 Natural oil



CHERRY
AR4 Dark oil



MAPLE
A01 Natural soap



MAPLE
A04 White pigmented oil



ASH
A04 White pigmented oil



AVAILABLE MATERIAL OPTIONS: COLORED WOOD, FABRIC AND LEATHER.
For more material options please check artisan.ba/materials